

台風12号による深層崩壊と、それに先だった重力斜面変形 Deep-seated catastrophic landslides induced by typhoon 12 and their precursory gravitational slope deformation

千木良雅弘^{1*}, ツォウ チンイン¹, 松四雄騎¹, 平石成美², 松沢真¹

CHIGIRA, Masahiro^{1*}, Tsou Ching-Ying¹, MATSUSHI, Yuki¹, HIRAIISHI, Narumi², Makoto Matsuzawa¹

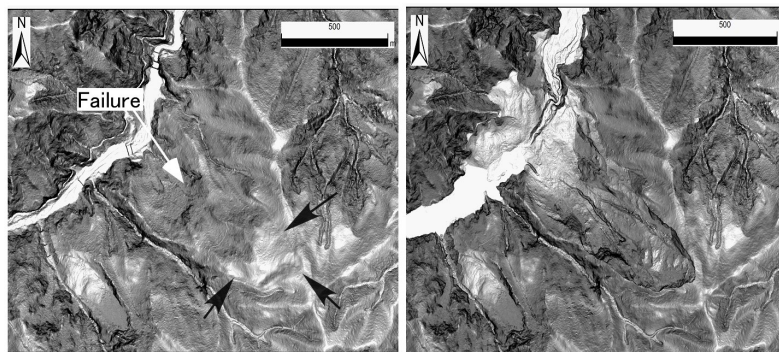
¹ 京都大学防災研究所, ² 深田地質研究所

¹ Disaster Prevention Research Institute, Kyoto University, ² Fukada Geological Institute

台風12号は、2011年9月2日から5日にかけて西日本を横断し、特に紀伊山地に2000mmを超える降雨をもたらし、14以上の深層崩壊を発生した。これらの崩壊は、住居の直撃、天然ダムの形成、または増水した河川への突入による津波の発生を引き起こした。これらは面積36000 から549000 と大規模であり、最大の崩壊体積は1500万³と見積もられる。発生したものの内大規模な14の深層崩壊について、発生前の1m - DEM解析および空中写真観察を行った結果、1つの崩壊を除いて、いずれも発生前に将来冠頂となる位置に重力変形による小崖を伴っていたことがわかった。これらの小崖は、傾斜33°から45°、比高2mから50mで、空中写真では極めて注意深く観察して見出されるものが多い。斜面傾斜方向断面で考えると、その水平長と崩壊斜面水平長との比は5~21%であり、これは発生前の斜面変形程度が小さかったことを示している。残りの一つの崩壊は、岩盤斜面の下方に崩積土が堆積し、その下部に崩壊があり、この崩壊が上方に拡大した結果上方岩盤斜面が不安定化したと解される。また、これらの崩壊の冠頂と崩壊最下部とを結ぶ線の傾斜はいずれも27°から34°であった。これらの特徴は、深層崩壊発生場所予測に重要な手掛かりとなるものである。

キーワード: 深層崩壊, 台風12号, 地形発達, 地質, 岩盤クリープ, 重力斜面変形

Keywords: deep-seated landslide, typhoon 12, slope development, geology, mass rock creep, gravitational slope deformation



紀伊山地における降雨履歴と斜面の不安定性および深層崩壊の発生 Rainfall, slope instability, and deep-seated landslides in Kii Mountains Japan

松四 雄騎^{1*}, 山田 真澄¹, 千木良 雅弘¹
MATSUSHI, Yuki^{1*}, YAMADA, Masumi¹, CHIGIRA, Masahiro¹

¹ 京都大学防災研究所

¹ Disaster Prevention Research Institute, Kyoto University

Prediction of deep-seated landslides by heavy rainfall needs combination of two complementary approaches that focus on geological and geomorphological predisposition of hillslopes, and hydrological triggering of final slope destabilization. Analyses of topography and rainfall history will provide a clue to understand processes leading to deep-seated landslides in mountainous landscape. This study reports the case of deep-seated landslides caused by typhoon 12 in 2011, in Kii Mountains, Japan. A GIS-based topographic analysis revealed the distribution of potential hillslope instability in the terrain, and hence offered an interpretation for location of the landslides. Timing and motion of several landslides are reconstructed by seismic-wave records. We examined relationships between preceding rainfall and volume or speed of sliding mass to evaluate threshold conditions leading to landslides.

キーワード: 深層崩壊, 降雨履歴, 地形発達, ハザードゾーニング

Keywords: deep-seated landslide, rainfall history, landscape evolution, hazard zoning

2011年台風12号によって発生した地すべりの地震波形記録 Seismic recordings of the Landslides caused by Typhoon Talas

山田 真澄^{1*}, 松四 雄騎¹, 千木良 雅弘¹
YAMADA, Masumi^{1*}, MATSUSHI, Yuki¹, CHIGIRA, Masahiro¹

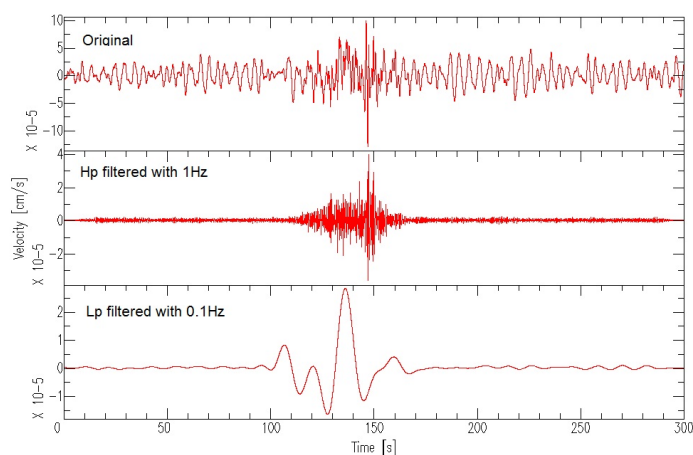
¹ 京都大学防災研究所
¹DPRI, Kyoto University

Typhoon Talas passed Japan Island on September 3-4, 2011 and brought substantial rainfall in western part of Japan. Total rainfall by this typhoon exceeds 2000mm in Kii peninsula, which caused many landslides in Nara, Wakayama, and Mie prefectures. 73 people were killed and 19 were reported missing by this typhoon.

The seismic signals due to these landslides are recorded by dense seismic network in Japan. The long-period surface waves are recorded by broadband seismic network (F-net) all over Japan (NIED, 2011), and short-period ground motions are recorded by the high-sensitive seismic network (Hi-net) as much as a few hundred km away. The landslide signals are usually tens of seconds long and have smooth onset, thus it is easy to distinguish to records of small earthquakes with couple of seconds duration. The typical landslide recordings are shown in Fig. 1. We applied back-projection technique (Spudich and Cranswick, 1984) to the records and determined the timing and location of each landslide signal.

We successfully detected several landslides in the continuous seismic recordings, and large events with volume more than 1 million m³ were located by the back-projection method. The seismic waveforms are very characteristic, and composed of high-frequency ground motion (frequency > 1Hz) and low-frequency ground motion (frequency < 0.1Hz). This complicated waveforms reflects the actual mechanism of landslides, and helps to understand the mass movement in time series.

The sequence of the landslides caused by Typhoon Talas can be located by the conventional source relocation technique in seismology. The seismic signal can tell the snapshot of the process of the landslides, which is rarely observed in visual (Suwa et al., Socio et al.). This is one of the most well-recorded landslide sequences all over the world. This seismic network is originally designed for locating seismic activities, but continuous records are very important to understand the mechanisms of the natural phenomenon as shown in this presentation.



紀伊山地における2011年台風12号による深層崩壊の発生場 Occurrence site of deep-seated landslides induced by typhoon 1112 in the Kii Mountains

平石 成美^{1*}, 千木良 雅弘²

HIRAISHI, Narumi^{1*}, CHIGIRA, Masahiro²

¹ 公益財団法人深田地質研究所, ² 京都大学防災研究所

¹Fukada Geological Institute, ²DPRI, Kyoto University

Distribution of convex slope breaks and fluvial knickpoints which are regarded as "erosion front" and deep-seated landslides induced by typhoon 1112 have been investigated to reveal how landslides develop in the context of long-term slope development. We analyzed mountain topography by using 10-m mesh DEM, topographic maps and aerial photographs in the central Kii Mountains, southwest Japan. We found that convex slope break is widely distributed about 200m above the present riverbed in study area, and it divides the area into lower dissected area and upper palaeosurface. Dissected area is divided into lower and upper parts by at least one slope break. These slope breaks were formed by active incision, and the incision dissected palaeosurface and propagated main stream to tributaries and downstream to upstream. Deep-seated landslides tend to occur in slopes with these slope breaks, because undercut slopes are unstable and partly suffered gravitational deformation. Topographic analysis by erosion front has the potential to identify the landslide-susceptible region roughly but widely.

キーワード: 深層崩壊, 侵食前線

Keywords: deep-seated landslides, erosion front

The geological characteristics of the Leye landslide near Alishan, Taiwan The geological characteristics of the Leye landslide near Alishan, Taiwan

Zheng-yi Feng^{1*}, Kuo-Chin Chang², Hsiu-ying Lai¹, Zhen-zhang Ding²
FENG, Zheng-yi^{1*}, Kuo-Chin Chang², Hsiu-ying Lai¹, Zhen-zhang Ding²

¹Department of Soil and Water Conservation, National Chung Hsing University, Taichung, Taiwan, ²The Nantou Branch, Soil and Water Conservation Bureau, COA, Executive Yuan

¹Department of Soil and Water Conservation, National Chung Hsing University, Taichung, Taiwan, ²The Nantou Branch, Soil and Water Conservation Bureau, COA, Executive Yuan

Serious landslides occurred in Leye region near Alishan, Taiwan in 2009 during Typhoon Morakot struck. This study investigated the mechanism of the Leye landslides and the characteristic of the nearby geological characteristics in the landslide area. The fluvial processes of the Tsengwen River should influence the landform thereby also influence the development of the Leye landslides. The landslide is triggered by the intense rainfall of Typhoon Morakot. Also, in the sedimentary formation of Leye region, the geological structures, such as synclines, anticlines and dip slopes control the displacement of the landslides. The mitigation works maybe helpful to retard possible complex the hazards in recent coming years. Emergency evacuation could be a better solution to mitigate the hazards in the Leye landslide area.

キーワード: Landslide, dip slope, mechanism, mitigation

Keywords: Landslide, dip slope, mechanism, mitigation

台湾北部で下刻によって起きた山体の重力変形

Gravitational slope deformation induced by transient waves of incision in northern Taiwan

鄒青穎^{1*}, 千木良雅弘¹, 松四雄騎¹, 陳樹群²

TSOU, Ching-Ying^{1*}, CHIGIRA Masahiro¹, MATSUSHI Yuki¹, CHEN Su-Chin²

¹ 京都大学防災研究所, ² 中興大学水土保持学系

¹Disaster Prevention Research Institute, Kyoto University, ²Dept. of Soil and Water Conservation, Chung-Hsing University

At least 11% of the upper Shihmen Reservoir catchment is affected by gravitational slope deformation in the northern part of the Hueshan Mountain Range, Taiwan, where is underlain by Oligocene and Miocene sedimentary rocks and metamorphic rocks. The gravitational slope deformation has occurred as a response to the propagation of new incision waves to palaeosurfaces. Therefore, landscape evolution must be accounted for to predict and to evaluate potential sites of catastrophic landslides, most of which are preceded by gravitational slope deformation. Geomorphic analyses combined with cosmogenic nuclide dating revealed that at least three phases of transient waves of incision have propagated into paleosurfaces with a minimum age of ~140 ka. Tectonically induced base-level fall triggered the first incision wave around ~120 to 140 ka, dissecting palaeosurfaces and inspiring gravitational slope deformation. The second incision wave probably driven by global sea-level lowering during last glacial age has reached to the catchment around ~13 to 15 ka with an enormously rapid incision rate of 20 mm a⁻¹, inducing slope movements. Climate forcing such as increasing monsoonal precipitation during the last glacial-to-interglacial transition may have been another cause of the rapid incision. The third incision wave is apparently associated with a local base level change. The trigger and its initiation are as yet unknown. This younger incision made steeper slopes (avg. 39.8 degree), over several tens to a few hundred meters above current river bed. These are small landslide-prone slopes since numerous numbers of smaller landslides are concentrated on the lowest steep part of the river-side hillslopes.

Surface exposure dating on slip surface of an ancient landslide on a dip slope reveals the occurrence of the landslide in the late Holocene epoch, suggesting the development of the deep-seated slope deformation creates suitable conditions in a long-term (in the order of millions of years) for the subsequent landslide activities since the paleosurface has been dissected by the first incision wave. Recent catastrophic landslides had been preceded by gravitational slope deformation of rocks with adverse geological structures, suggesting that major-landslide prone slopes are dip-slopes of alternating beds of sandstone and mudstone at the margins of the paleosurface.

キーワード: 山体重力変形, 下刻, 古地形, 宇宙線生成核種分析

Keywords: gravitational slope deformation, transient waves of incision, paleosurface, cosmogenic nuclide dating

斜面崩壊地帯における自然電位観測に関する研究 In-situ self potential measurement for monitoring of landslide process

矢部 修平^{1*}, 服部 克巳¹, 大坪 大¹, Edy Gaffer², Adrin Tohari², Kohri Sugianti², Boko Nurdiyanto³, Iwan Maulana³, Noor Effendi³, Pri Harjadi³, Suhardjono³, Budi Waluyo³, Byung-Gon Chae⁴, Huang Qinghua⁵
YABE, Shuhei^{1*}, HATTORI, Katsumi¹, OTSUBO, Hiroshi¹, Edy Gaffer², Adrin Tohari², Kohri Sugianti², Boko Nurdiyanto³, Iwan Maulana³, Noor Effendi³, Pri Harjadi³, Suhardjono³, Budi Waluyo³, Byung-Gon Chae⁴, HUANG, Qinghua⁵

¹ 千葉大学大学院理学研究科, ² インドネシア科学院, ³ インドネシア気象庁, ⁴ 韓国地質資源研究院, ⁵ 北京大学

¹ Graduate school of science, Chiba University, ² LIPI, Indonesia, ³ BMKG, Indonesia, ⁴ Korea Institute of Geoscience and Mineral Resources, ⁵ Peking University

近年、集中豪雨の頻度が増加するにつれて、斜面崩壊の発生件数も増加する傾向にある。降雨に起因する斜面崩壊過程を把握し、斜面の監視や崩壊を予測することは重要な課題である。そこで我々は自然電位法 (Self Potential = SP) による斜面崩壊の早期予測システムの開発を試みている。これまでの室内実験の結果から、SPによって地下での飽和域の成長、鉛直方向から斜面方向への水流の変化、崩壊 20 分前の SP のトランジェントな信号の出現が記録され、SP 法を用いた地下水モニタリングが有望であることがわかりつつある。しかし室内実験は二次元的で、土層が均質であるため、室内実験だけでは限界がある。そこで本研究では、インドネシア Pelabuhan Ratu の斜面崩壊地帯に観測点を設置し、実斜面による検証観測を開始した。

具体的には、SP 測定電極を斜面崩壊方向に 2 測線、直交方向に 1 測線の 3 測線、計 13 か所に埋設した。深さは 1.0、2.5、4.0 m である。また、地下水流動 (間隙水圧) を調査するために、テンシオメーターを設置した。テンシオメーターは 5 測線設け、各測線 0.5、1.0、1.5、2.0、3.0 m の深さに計 25 個設置した。テンシオメーターの結果から観測斜面は飽和もしくは飽和に近い状態にあることがわかった。また、地下の傾斜を求めるためのポアホールを 2 か所、及び雨量計を設置した。

その結果、実斜面では観測された SP 値と間隙水圧値には線形関係があり、両者を結び付ける界面動電結合係数 C' は約 - 2.0 (mV/m) と算出された。ここで、界面動電結合係数 C' とは飽和土層中を通過する流水の圧力と発生する電位に関する係数であり、水質が同じである限り土壌によって決まる。また、降雨に伴い SP の変動が大局的に変動することが確認された。そこで、この SP 変動は水の流動に伴うものであると考え、隣り合う電極の電位差を求めた。その結果、降水量の少ない日では鉛直下向きの流動と考えられる SP の変動が確認され、テンシオメーターから作成した等水理水頭線図の流動方向と一致した。しかし、降水量の多い日では、斜面方向の流動にと考えられる SP 変動が確認された。また、理論的に動水勾配を算出したところ、強雨にともない横方向の動水勾配が上昇する結果が得られた。つまり、降水量の多い日ではローカルな斜面方向の流動が生じていると考えられる。これは室内斜面崩壊実験から崩壊発生前に斜面方向の水の流動が卓越し、斜面崩壊が発生することが確認されており、斜面方向の水の流動は斜面崩壊の直前過程と関係がある可能性が示唆される。詳細は講演時に述べる。

Statistical emulation of a landslide-generated tsunami model Statistical emulation of a landslide-generated tsunami model

Serge Guillas^{1*}, Andria Sarri¹, Frederic Dias²
GUILLAS, Serge^{1*}, Andria Sarri¹, Frederic Dias²

¹University College London, ²University College Dublin

¹University College London, ²University College Dublin

Due to the catastrophic consequences of tsunamis, early warnings need to be issued quickly in order to mitigate the hazard. Additionally, there is a need to represent the uncertainty in the predictions of tsunamis' characteristics corresponding to the uncertain trigger features (e.g. either position, shape and speed of a landslide, or sea floor deformation associated with an earthquake). Unfortunately, computer models are expensive to run. This leads to significant delays in predictions and makes the uncertainty quantification impractical. Statistical emulators run almost instantaneously and may represent well the outputs of the computer model. In this paper, we employ the Outer Product Emulator to build a fast statistical surrogate of a landslide-generated tsunami computer model. This Bayesian framework enables us to build the emulator by combining prior knowledge of the computer model properties with a few carefully chosen model evaluations. The good performance of the emulator is validated using the Leave-One-Out method.

キーワード: landslide, tsunami, statistical emulation, hazard assessment

Keywords: landslide, tsunami, statistical emulation, hazard assessment

TSUNAMI GENERATION BY GRANULAR LANDSLIDES IN VARIOUS SCENARIOS TSUNAMI GENERATION BY GRANULAR LANDSLIDES IN VARIOUS SCENARIOS

Brian C. McFall¹, Fahad Mohammed¹, Hermann Fritz^{1*}

Brian C. McFall¹, Fahad Mohammed¹, FRITZ, Hermann^{1*}

¹Civil and Environmental Engineering, Georgia Institute of Technology, Savannah, GA 31407, USA

¹Civil and Environmental Engineering, Georgia Institute of Technology, Savannah, GA 31407, USA

Tsunamis generated by landslides and volcanic island collapses account for some of the most catastrophic events. Major tsunamis caused by landslides or volcanic island collapse were recorded at Unzen in 1792, Krakatoa in 1883, Grand Banks, Newfoundland in 1929, Lituya Bay, Alaska in 1958, Papua New Guinea in 1998, and Java in 2006.

Source and runup scenarios based on real world events are physically modeled in the three dimensional NEES tsunami wave basin (TWB) at Oregon State University (OSU). A novel pneumatic landslide tsunami generator (LTG) was deployed to simulate landslides with varying geometry and kinematics. The LTG consists of a sliding box filled with up to 1,350 kg of naturally rounded river gravel which is accelerated by means of four pneumatic pistons down the 2H: 1V slope, launching the granular landslide towards the water at velocities of up to 5 m/s.

Topographical and bathymetric features can greatly affect wave characteristics and runup heights. Landslide tsunamis are studied in different topographic and bathymetric configurations: far field propagation and runup, a narrow fjord and curved headland configurations, and a conical island setting representing landslides off an island or a volcanic flank collapse.

Water surface elevations were measured using an array of resistance wave gauges. The granulate landslide width, thickness and front velocity were measured using above and underwater cameras. Landslide 3-dimensional surface reconstruction and surface velocity properties were measured using a stereo particle image velocimetry (PIV) setup. The speckled pattern on the surface of the granular landslide allows for cross-correlation based PIV analysis. Wave runup was measured with resistance wave gauges along the slope and verified with video image processing. The measured landslide and tsunami data serve to validate and advance 3-dimensional numerical landslide tsunami and prediction models.

キーワード: landslide, tsunami, volcano

Keywords: landslide, tsunami, volcano

Debris flow hazards in Malaysia: The need for comprehensive mapping and risk assessment

Debris flow hazards in Malaysia: The need for comprehensive mapping and risk assessment

Ibrahim Komoo^{1*}, Choun-Sian Lim¹, Tajul Anuar Jamaluddin¹
KOMOO, Ibrahim^{1*}, LIM, Choun-Sian¹, Tajul Anuar Jamaluddin¹

¹Southeast Asia Disaster Prevention Research Institute (SEADPRI-UKM), Universiti Kebangsaan Malaysia

¹Southeast Asia Disaster Prevention Research Institute (SEADPRI-UKM), Universiti Kebangsaan Malaysia

Debris flow is quite common in hilly and mountainous areas. In Malaysia, it is the life-threatening landslide disaster, the type of landslides that killed many lives compared to other landslide types. While many natural debris flows have occurred in areas without human settlement, there were at least 15 cases of killer debris flows since year 1994, at least 137 people were killed. Several major debris flows events in Malaysia were (1) a multiple-landslide cum debris flow flooded a major highway in Genting Sempah, Selangor killed 21 road users that were in their idling vehicles when the road was blocked by a small landslip. The debris flow started from landslides at the headwaters of the steep mountain flanking the highway; (2) a debris flow devastated a local village in Pos Dipang, Perak in 1996, 44 people died. The debris flow nucleated by several landslides in the upper valley scouring the valley, subsequently created temporary dams along the river before the village. The village was eventually swept away by overwhelmed debris flood when the temporary dams broke; (3) in Johor, Vamei-Typhoon storm with the strength that capable of uprooting trees and heavy rain attributed to several induced landslides then debris flow in Gunung Pulai in the year 2001. Four houses were swept away by the debris flood and 5 were killed, due to debris accumulated before a bridge across the river broke, and; (4) in 2002, 16 lives perished when debris flow buried their village in Ruan Changkul, Sarawak. It buried an 8-unit long house, the 20,000 cubic meter debris was initiated from a landslide on the agricultural land on top of the hill. More recently, in August 2011, a debris flow in Sungai Ruil, Cameron Highlands buried 4 houses at a foot slope, 7 killed while 2 injured; the houses were situated 150m away from the source of the landslide.

In Malaysia, the debris flow landslide is becoming an alarming disaster as development are encroaching the fringe of highlands and mountainous areas. The hazards from the adjacent slopes or upstream located far away has yet to be considered in many risk assessment. Only a limited mapping and identification of debris flow were carried out at very local scale while there are many places in Malaysian topography of mountainous and dissected hilly terrain are vulnerable to debris flow. Currently, research on debris flows in Malaysia is still very limited to post-disaster investigation within the areas of debris flow where disasters occurred, particularly if death is involved.

A nation-wide mapping is proposed to be carried out to delineate areas of potential and vulnerable to debris flows. The first level of national mapping will rely on topographical and geological data to identify elements that are susceptible to debris flow with emphasising on the basin geometry, geomorphology, modelling of run-out distance of a debris flow and at-risk cultural elements.

キーワード: debris flow, landslide, Malaysia, debris flood

Keywords: debris flow, landslide, Malaysia, debris flood

バッドランドでの岩石物性変化の観測-台湾南西部鮮新-更新統泥岩分布地域において-

Monitoring of the rapid weathering in a badland of Plio-Pleistocene mudstone area, southwest Taiwan

樋口 衡平^{1*}, 千木良 雅弘¹

HIGUCHI, Kohei^{1*}, CHIGIRA, Masahiro¹

¹ 京都大学防災研究所

¹ Disaster Prevention Research Institute, Kyoto University

We monitored water contents and electric conductivities beneath a slope surface in a badland, southwest Taiwan, where highly incised topography is formed by rapid erosion of about 10 cm/year on Plio-Pleistocene mudstone. Badland is characterized by dissected bold landscape with gullies and ridges. It is widely distributed in arid to semi-arid areas in the world (ex. South Dakota in America, Loess area in China, south Italy and southeast Spain). Slope surface in badland of weak mudstone is markedly characterized by surface crusting and desiccation cracks, which reach 10 to 20 cm depths. Erosion in such badlands is assumed to be related to high saline contents. We set sensors for temperature, water content, and electric conductivity at 0 to 40 cm depths beneath a slope surface and measured them at 10 minutes intervals from 2009 to 2011. A rain gauge was set 1 m above the ground in front of the monitoring slope and hygro-thermo meters were set 10 cm above the slope surface and with the rain gauge. About 1900 mm of precipitation occurred during the monitoring interval and over 96% of the rainfall was in the rainy season from May to September. Air temperatures and relative humidities gradually increased to rainy seasons from dry season. Water contents near the slope surface were lowest in the dry season and increased by infrequent rainfall events, and became quite high in rainy seasons. Salinity, which is estimated from electric conductivities and water contents, near slope surface was lowest in dry seasons and increased in early rain seasons. The increased salinity was diluted by heavy rainfall events in rainy seasons and intensive erosion occurred by the grain dispersion by the dilution. Water penetration depths were 30 to 40 cm in dry seasons and became much shallower to a depth of about 10 cm in rainy seasons. The decrease in the water penetration depths may be attributable to the self sealing of cracks by rock expansion when wet.

キーワード: バッドランド, 鮮新-更新統泥岩, 急速な侵食, 風化, 塩分移動, 観測

Keywords: badland, Plio-Pleistocene mudstone, rapid erosion, weathering, salt movement, monitoring

An application of the diffusion and advection equations for the evolution of a gravel slope An application of the diffusion and advection equations for the evolution of a gravel slope

Zheng-yi Feng^{1*}, Yen-min Liu¹
FENG, Zheng-yi^{1*}, Yen-min Liu¹

¹Department of Soil and Water Conservation, National Chung-Hsing University, Taichung, Taiwan

¹Department of Soil and Water Conservation, National Chung-Hsing University, Taichung, Taiwan

The diffusion and advection equations were manually coupled to model the evolution of a gravel slope in Da-keng, Taichung, Taiwan. The two equations were discretized using finite difference method and coded in Matlab environment. Field topographical surveys of the gravel slope and previous digital terrain data were used for calibrating the diffusion and advection coefficients used in the equations. We show that the evolution of slope decline and parallel retreat can be well described the gravel slope evolution in Da-keng. A non-homogeneous slope was simulated by varying the corresponding diffusion and advection coefficients for the non-homogeneous slope.

キーワード: Slope evolution, diffusion model, advection model

Keywords: Slope evolution, diffusion model, advection model

伏野地すべり地における地震時の間隙水圧変動について Fluctuation in excess pore water pressures triggered by earthquakes at the Busuno land-slide

大沢 光^{1*}, 岡本 隆², 松浦 純生³, 阿部 和時⁴

OSAWA, Hikaru^{1*}, OKAMOTO, Takashi², MATSUURA, Sumio³, Kazutoki Abe⁴

¹ 日本大学大学院生物資源生産科学専攻, ² 森林総合研究所, ³ 京都大学防災研究所, ⁴ 日本大学生物資源科学部

¹Graduate School of Bioresource Sciences, Nihon University, ²Forestry and Forest Products Research Institute (FFPRI), ³Disaster Prevention Research Institute (DPRI), Kyoto University, ⁴Bioresource Sciences, Nihon University

はじめに

近年新潟県中越地震や岩手宮城内陸地震などの M6 以上の大規模地震が多数発生し、それらにより多くの地すべり災害を引き起こし、死者をだした。地震動を起因とする地すべり地の間隙水圧変動を観測した例は少なく、未だ不明な点が多くあり、メカニズムの解明が必要である。その為、本論では地すべり地において観測した 5 つの地震による強震動および間隙水圧変動を用いて、地震時における間隙水圧変動特性について考察した。

解析に用いる地震動と間隙水圧計の情報

我々は新潟県の伏野地すべり地にて、地震動と間隙水圧の観測を行っており、当地区において地震時に間隙水圧の変動がみられた為その結果を示す。

本研究では以下の 5 つの地震動、2004 年新潟県中越地震 M6.8(EQ1) およびその最大余震 M6.5(EQ1')、2007 年新潟県中越沖地震 M6.8(EQ2)、2011 年長野県北部地震 M6.6(EQ3) およびその最大余震 M5.8(EQ3') を用いて解析を行なう。2010 年より地震計を伏野地すべりへ設置した為、それ以前 (EQ1-EQ2) の強震データは防災科学研究所 K-net 安塚 (NIG 024) のデータを利用した。また、伏野の最大加速度および最大速度を推定するため、司・翠川 (1999) の断層最短距離を用いた距離減衰式によって求めた。

間隙水圧計の位置は地すべり移動土塊内において移動量の大きい中部ブロックに設置しており、観測は 10 分間隔で行なっている。EQ1-EQ2 間では 5 基の観測値を用い、その後積雪による計器の圧壊の為 2 基を新設し、EQ3,3' では 2 基の観測値を用いた。

結果と考察

5 つの地震動発生時に全ての間隙水圧計で変化が生じた。EQ1-2 では地震発生後に静水圧を超え、スパイク状の上昇及び減少を示している間隙水圧の観測値が得られた。これらの水圧変動は透水性の低い地盤内部で地震による急速な弾性圧縮を受けたことにより、土粒子間の空隙が体積変化して一時的な間隙水圧変動を示していることが考えられる。本稿では、地震によってスパイク状の上昇・減少を示す過剰間隙水圧について、静水圧を 0 としてそこから増減分を絶対値で表したものを過剰間隙水圧の絶対値とする。

解析結果から、最大加速度が大きくなるに連れ水圧変動も大きくなる傾向が見られた。5 つの地震動の中で最も高い最大加速度は EQ3 時の東西 236Gal、南北 382Gal、上下 108Gal であった。また、EQ3 における周波数特性では、3Hz 付近に卓越周波数帯が存在していることが分かった。その時の過剰間隙水圧変動は過去の例の中で最も高い 15kPa であった。また EQ3 以外の地震動による過剰間隙水圧変動は大きくて 1kPa 程度であることから、EQ3 時の水圧変動が極端に大きいことがわかる。その要因として EQ3,3' 発生時には地すべり土塊上に 3m の積雪があり、積雪層によるすべり層の圧密、および積雪層の長期載荷によるすべり層の圧密という要因が重なり大きな水圧変動が起こった可能性が考えられる。また、岡本ら (2006) は本対象地において EQ1, EQ2 では地震前よりも水圧の高い状態が 8-24 時間継続し、それは地震時の地盤の弾性圧縮変形 (スパイク状の上昇) と塑性的な圧縮変形 (高間隙水圧の残留) の両成分で構成されたためと報告している。EQ3,3' では同様の事例が見られ、地震以前の静水圧よりも高い状態が 1-3 日間継続した。

文献

司宏俊・翠川三郎 (1999):断層タイプ及び地盤条件を考慮した最大加速度・最大速度の距離減衰式, 日本建築学会構造理論文集, No.523, pp.63-70.

岡本隆・松浦純生・浅野志穂・竹内美次 (2006):活動中の地すべり地における中越地震発生時の移動および間隙水圧変動特性, 日本地すべり学会誌, Vol.43, No.1, pp.20-26.

キーワード: 地すべり, 地震, 過剰間隙水圧, 最大加速度

Keywords: landslide, earthquake, excess pore water pressure, peak ground acceleration

小型水槽実験装置を用いた水流に関連した自然電位変動に関する研究 The sandbox experiments to understand Self-Potential changes associated with water flow

大坪 大^{1*}, 矢部 修平¹, 服部 克巳¹, Adrin Tohari², Khori Sugianti²
OTSUBO, Hiroshi^{1*}, YABE, Shuhei¹, HATTORI, Katsumi¹, Adrin Tohari², Khori Sugianti²

¹ 千葉大学大学院理学研究科, ² インドネシア科学院

¹Graduate School of Science, Chiba University, ²LIPI, Indonesia

Landslides are one of the most severe natural disasters in the world and there are two types; rainfall induced landslides and landslides triggered by an earthquake. In this research, basic study on early warning system for landslides will be performed to understand rainfall-induced landslide process by hydrological and electromagnetic changes. The final goal of the research is to develop a simple methodology for landslide monitoring/forecasting using self potential method. Conventional methods for monitoring landslides are based on geotechnical and hydrological approaches measuring pore pressures and displacements on the surface. In these methods, boreholes are required in general which may disturb the subsurface water system. Making boreholes is costly and it is not so practical for field applications. On the other hand, self potential measurement using two electrodes is easy to set up and run continuously.

In this study, the sandbox experiment has been conducted to understand the relation between water flow and self potential using a network of electrodes set in the tank. For the sandbox system, it is possible to control the water table and easily to drain water from the tank and infiltrate water into the tank. Controlling water flow in the tank, we conducted repeatedly experiments. In consequence, we could get the relation between the magnitude of water flow and self potential. The details will be given in our presentation.

アナログモデル実験による断層崖斜面の形状と崩壊パターンの検討 Geometry and pattern of slope failures at a fault scarp in analogue models

中桐 寛仁^{1*}, 宮川 歩夢², 山田 泰広¹

NAKAGIRI, Hiroto^{1*}, MIYAKAWA, Ayumu², YAMADA, Yasuhiro¹

¹ 京都大学大学院工学研究科都市社会工学専攻, ²JAMSTEC: 独立行政法人海洋研究開発機構

¹Department of Urban Management, Graduate School of Engineering, Kyoto University, ²JAMSTEC: Japan Agency for Marine-Earth Science and Technology

斜面崩壊現象は、地質的・地形的な要因により不安定化した斜面が、豪雨や地震動などを引き金に崩壊する自然現象で、我々の生活に大きな被害を与える。そのため、将来の集中豪雨や地震に備えて、斜面不安定化に寄与する各種要因を分析し、崩壊危険性を評価しておくことは大変重要である。本研究では、斜面崩壊の地質的・地形的要因である逆断層活動に注目し、断層活動に伴う斜面の形状や発達、崩壊について、アナログモデル実験を用いた検討を行った。実験では豪雨の再現は行わず、また静的な条件で実験を行うことで地震動等の影響を無視できるようにした。これにより、斜面の発達および崩壊に関する逆断層活動のみの影響を考慮できるように工夫した。

本実験では、逆断層変位する基盤岩上に堆積する堆積層に発達する斜面を模擬した。30度の角度で切断した木製ブロックを基盤岩に見立て実験装置内に配し、その上に堆積層として乾燥砂を堆積させた。そして、木製ブロックに非常にゆっくりと逆断層変位を与え、乾燥砂に斜面を発生させた。実験中の斜面の発達と崩壊の様子を、デジタルカメラを用いて、上方および側方から一定時間間隔で撮影した。得られた画像をデジタル画像相関法 (Digital image correlation : DIC) により解析することで、モデルの変形過程を時系列で取得し、堆積層表面の斜面の3次元形状およびその崩壊パターン、断面の断層活動などについて、互いの関連性について検討した。

斜面の3次元形状を観察すると、斜面長に関わらず、斜面下端に一定幅の急傾斜部が見られた。一方、モデル側方の画像から可視化される断層は、地表付近では、常に斜面下端でほぼ一定の幅で活動していた。両者は大変整合的であった。このことは、斜面傾斜分布中の急傾斜部の存在から、斜面下に存在する断層の位置や幅を推定可能であることを示唆している。

斜面は、堆積層表面に直線状に発生するのではなく、ある程度の曲率を持って発生した。上盤側へ凸な位置では、上盤上昇量が大きく、多く崩壊面積の大きく斜面上部から崩壊する「大規模斜面崩壊」が多く発生した。一方、下盤側へ凸な位置では、上盤上昇量が小さく、大規模斜面崩壊は少なかった。また、上盤上昇量が増大し斜面が発達するにつれて、斜面下端は徐々に直線的になり、斜面上端は斜面発生初期の曲率が増幅された形状へと変化した。このように、観察された現象には、斜面発生初期の曲率に依存する傾向が見られた。このことから、表面における斜面の曲率より、大規模斜面崩壊の危険性を定量化できる可能性が示唆される。

キーワード: アナログモデル実験, 逆断層, 斜面崩壊, デジタル画像相関法, 3次元表面形状

Keywords: analogue modeling, reverse fault, slope failure, DIC, 3D topography

3D remote-sensing study of the spatial distribution of landslides in SE Weihe Basin, central China

3D remote-sensing study of the spatial distribution of landslides in SE Weihe Basin, central China

Gang Rao^{1*}, Aiming Lin¹, Bing Yan¹

RAO, Gang^{1*}, LIN, Aiming¹, YAN, Bing¹

¹Graduate School of Science and Technology, Shizuoka University

¹Graduate School of Science and Technology, Shizuoka University

Many factors may be responsible for the occurrence of landslides, such as moderate to large magnitude earthquakes, typhoons as well as human activity. The landslides triggered by the earthquake are mostly concentrated in and around the epicentral area of large earthquakes over a distance of tens of kilometers, as well their distribution is strongly affected by the seismic faulting (e.g. Ren and Lin, 2010). To learn the distribution of landslides and its controlling factors is vital to make the risk assessments of landslide hazard, especially within the seismic active region.

Remote-sensing techniques have been applied to learn the spatial distribution of co-seismic landslides, based on cross-check of the reflection features of images acquired before and after the earthquake. Meanwhile, Digital Elevation Model (DEM) data with world-wide coverage (e.g. 90-m SRTM data) were also used to learn the topographic features of locations where landslides occurred (e.g. Ren and Lin, 2010). However, most of by previous studies are limited to analyze in map-view. Here we present a case study of the distribution of landslides and its relation to the active normal faults in SE Weihe Basin, central China, by using the 3D remote-sensing techniques which has been previously applied to detect the locations of seismic faults associated with moderate to large magnitude earthquakes.

In this study, higher resolution remote-sensing images (1-m IKONOS and 0.5-m WorldView data) were processed and analyzed in 3D perspective views by draping them on the 30-m ASTER Global Digital Elevation Model (ASTER GDEM) data. High-resolution Google Earth images if available were also used to cross-check the spatial distribution of landslides. Based on the results of our analysis, we then conducted the fieldwork to validate the interpretations of the remote-sensing images.

The results of our analysis indicate that the landslides are mostly distribution in the regions between the Weinan and Huayin city, which was inferred as the epicentral area of 1556 M8.5 Huaxian earthquake. Meanwhile, the landslides (including the largest Lianhuashi and Zhangling landslides) are generally developed upon the steep slopes (30°-65°) within a narrow zone with width of ~8-11 km and ~3 km along the Huashan Piedmont Fault and Northern Margin Fault of the Weinan Loess Tableland, respectively. The distribution of landslides was affected by the active faults and slope morphology in study area. The devastating 1556 M8.5 Huaxian earthquake caused widespread damages in the densely-populated region around the Xi'an city, an old capital of China, resulting in more than 830,000 deaths (largest total ever claimed), including the people killed by the giant landslides (e.g. Zhangling landslide). 3D remote-sensing techniques show their advantages to precisely constrain the spatial distribution of landslides and thus make the risk assessment of landslide hazard in the seismically active regions, such as the SE Weihe Basin.

References cited:

Ren, Z. & Lin, A. 2010. Co-seismic landslides induced by the 2008 Wenchuan magnitude 8.0 Earthquake, as revealed by ALOS PRISM and AVNIR2 imagery data. *Intern'l J. Remote Sensing* **31**, 3479-3493.

キーワード: landslides, active normal faults, 3D remote-sensing, SE Weihe Basin, central China

Keywords: landslides, active normal faults, 3D remote-sensing, SE Weihe Basin, central China

カルデラ湖, 屈斜路湖の湖底に潜む災害イベント地形 Topographies of hazardous events on the bottom of Caldera Lake Kussharo, Hokkaido, Japan

山崎 新太郎^{1*}, 原口 強²

YAMASAKI, Shintaro^{1*}, HARAGUCHI, Tsuyoshi²

¹ 北見工業大学, ² 大阪市立大学

¹Kitami Institute of Technology, ²Osaka City University

There are a lot of large caldera lakes in volcanic arcs such as Japan. Caldera lakes and their surroundings have good sceneries and hot springs; a lot of resorts located in their lakesides. However, the existence of abundant water in high elevation may provide the risk of the residences around the caldera lakes. The reasons are as follows: volcanic activities exist on the bottom of caldera lakes in many cases, and the inside of caldera rim is steep slope with large difference in elevation, their rims consist of lava and pyroclast which is preferred geology for catastrophic landslides. Volcanic activities and catastrophic landslides may cause overflow of lake water or tsunami. Their risk should be analyzed.

We are trying that analysis for Lake Kussharo in Hokkaido. Lake Kussharo is located in Kussharo Caldera which is the largest caldera in Japan. The lake has 79.3 km² in areas. The elevation of water surface is 121 m a. s. l. Only one river, Kushiro River flows from the lake to the downstream to Kushiro city. The resort area, Kawayu hot spring resort town is developed along lakeside. Volcanic activities are still active in this area. Mt. Atosanupuri erupted during the last few thousand years. The caldera rim has steep slopes and the highest part is 1000 m a. s. l. There are a lot of topographies of huge landslide masses and huge horseshoe shaped cliffs on the slope of rim. The terraces of old lake bottom lie on the wide area from the lakeside to the level of 150 m a. s. l. In addition, we found old terraces at the level of ca. 105-110 m a. s. l. and 95-90 m a. s. l. by our sonic survey. These terraces suggest that the level of water surface has repeatedly fluctuated.

We surveyed topography and geology of the ground surface and the bottom of lake using the sonic survey. In this presentation, we will mention about characteristic topographies related to past hazardous events. In particular, we found the mound-like hills in two areas. One area is ca 1 km in width from north to south and ca 1.5 km in length from east to west. This area has many small mounds, and their maximum size is ca 400 m in width and 20 m in height. Another area is ca 1.2km in width from north to south and ca 0.7 km in length from east to west. This area has also many small mounds, and their maximum size is ca 50 m in width and 20 m in height. These two areas are close to Nakajima Island which is the central cone of caldera. So, we deduce that both mound-like hills were flowed from Nakajima Is. by huge collapses. Also we found other topographies related to past hazardous events: landslide debris extended ca 2.5 km in width and ca 0.5 km in length near lakeside; a landslide involving bedded sediment; small eruptions with lava having width of ca 100 m; and topographies of depression associated with volcanic activities.

There are a lot of landslide masses and horseshoe shaped cliffs on the slope of rim. However, we could not find remains on their feet. Thus, most of their topographies on the rim do not concern recent hazardous events. The topographies we found are clear, so they probably formed after the formation of lake. Hazardous events formed their topographies could cause flood or tsunami, and then further events may occur around caldera lakes. Their risks should be considered for disaster prevention.

Keywords: Caldera lake, Landslide, Natural hazard, Lake Kussharo, Sonic survey