

The survey of geological structure applied topographic bird's-eye view observation using aerial photographs.

Ryusuke Araki [1], Toru Tachibana [2], Fumihiro Anada [3], Hideki Katagawa [4]

[1] DIA CONSULTANTS CO., [2] DIA CONSULTANTS, [3] Planning Sec., Nuclear Civil Engineering Dept., Hokuriku Electric Power Co., [4] Construction Dept & Nuclear Power Construction Dept, Hokuriku Electric Power Co.

Though the research of active structures is based on the recognition of tectonic relief, it is not always easy to recognize and identify topography as tectonic relief. The stereoscopic vision has been used for such a research, but its observable area is limited and it is difficult to recognize the topographic element wider than the area of the stereoscopic vision. As a different approach, we made bird's-eye view using both topographic maps and aerial photographs. It keeps the precision as a photograph, and enables the observation of wider area from any height and direction. We applied it to the research of topography and geological structure. As a result, it is found that some deformed structures thought to be formed by the raise of crust can be mass movement origin.

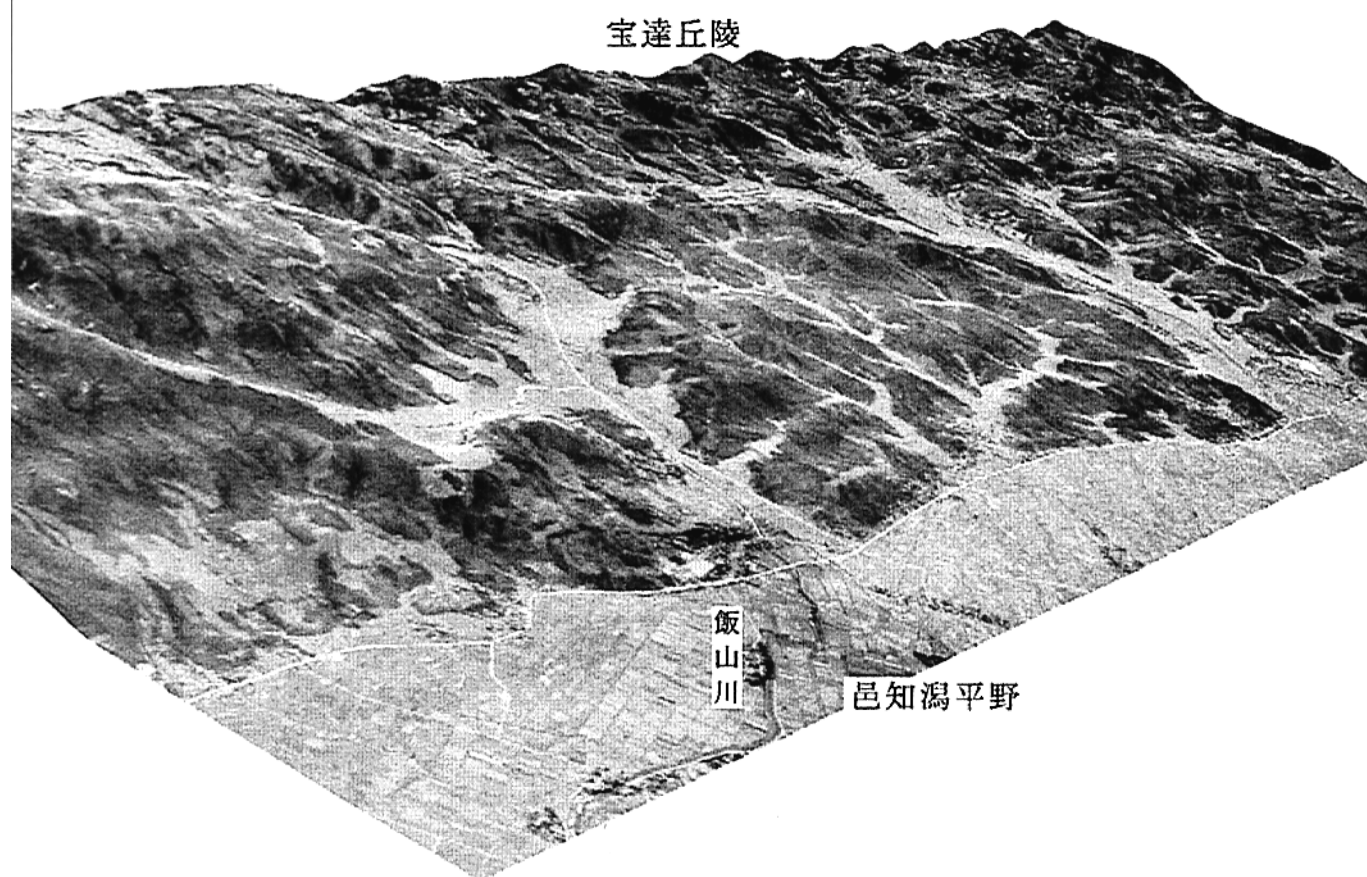


図1 宝達丘陵北西縁の地形鳥瞰図