

Simple evaluation of seismic site effects using the records from deep earthquakes (Part 2)

Takashi Akazawa[1]

[1] G.R.I.

In this paper, the author evaluated the site effects of not only at the sedimentary sites but also at the rock sites using the records of deep earthquakes obtained at seismic stations of The Committee of Earthquake Observation and Research in the Kansai Area (CEORKA) network. The obtained results agree well with the results of Tsurugi et.al (2002) obtained by a different method.

表1 地震一覧

地震番号	発震時	震央緯度	震央経度	震源位置	震源深さ (km)	M	KBU	CHY	KMN	KID	HSD	D10
1	1998.05.01 16:35:51.0	N34°02.6'	E136°13.3'	SOUTHERN MIE PREF	411.0	6.0		●	●	●		○
2	1998.08.20 15:40:54.6	N28°54.2'	E139°53.3'	W OFF OGASAWARA	457.0	7.1	●	●	●	●	●	○
3	1999.04.08 22:10:34.0	N43°35.7'	E130°48.4'	NEAR VLADIVOSTOK	598.0	7.2	●	●	●	●	●	○
4	2000.08.06 16:27:14.3	N28°51.5'	E140°04.1'	W OFF OGASAWARA	430.0	7.3	●		●	●	●	●
5	2002.05.29 02:19:33.0	N43°30.1'	E131°23.7'	NEAR VLADIVOSTOK	509.0	7.2	●	●	●	●	●	●
6	2003.09.25 05:56:55.4	N35°24.4'	E135°22.5'	NORTHERN KYOTO PREF	370.0	5.4	●	●	●	●	●	●
7	2003.11.12 17:26:42.3	N33°10.2'	E137°09.4'	SE OFF KII PENINSULA	398.0	6.5	●	●	●	●	●	●

【凡例】 ●：検証に利用する記録 ○：分解能が低いため検証に利用しない記録

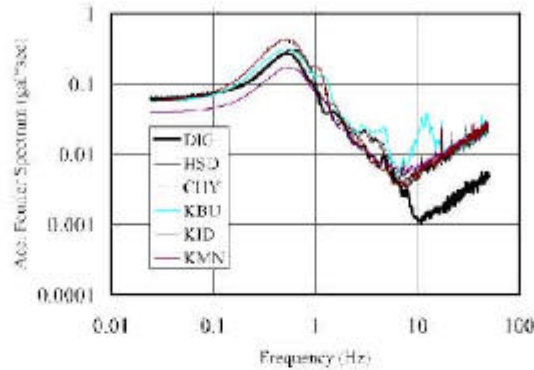


図1 地震番号7の記録の加速度フーリエスペクトル

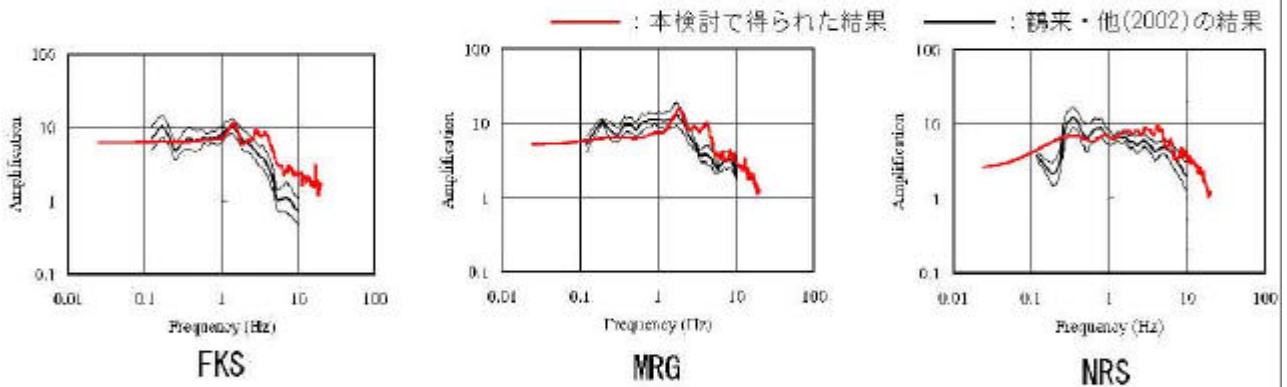


図2 KIDを利用して得られる堆積層上観測点のサイト特性

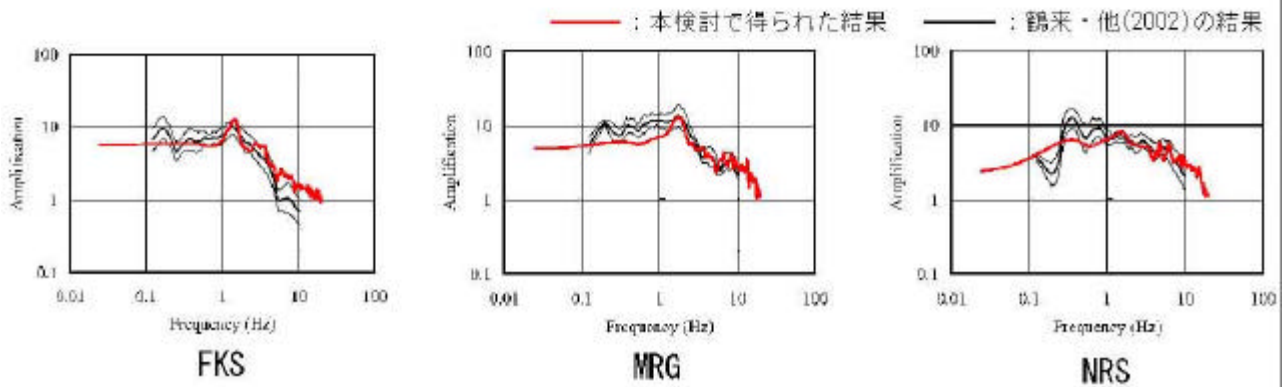


図3 HSDを利用して得られる堆積層上観測点のサイト特性