

The 1853 eruption of Usu Volcano, Hokkaido, Japan (Part2)

Kikuko Sakai[1]

[1] none

At the volcanological society of Japan 2005 Fall Meeting, I and Prof. Kobayashi reported that typical plinian eruption type deposits cannot be recognized all around near Usu Volcano, concerning with the 1853 eruption, and also reported that the deposits of pyroclastic flow occurred in the 1853 eruption covered only the restrict area in the northeastern part of the volcano.

This time, I relate correlation between the time of O-Usu lava dome intruded and the time of pyroclastic flow occurred, comparing with the witnessed eruption of 1943-1944.

Because O-Usu lava dome shape resembles Showa-Shinzan lava dome apparently.

I show geomorphological informations of the east somma and the summit crater near O-Usu lava dome by an aerial photograph took at the time of 1944.

I interpret that the risk management of those days was took by Ueda Tetsunoshin leading part as inferred from old documents that written about the 1853 eruption.

And also, as inferred from old documents I make a scenario of the sequence of the 1853 eruption. I believe firmly that this will contribute the risk management concerning with the future eruptions.

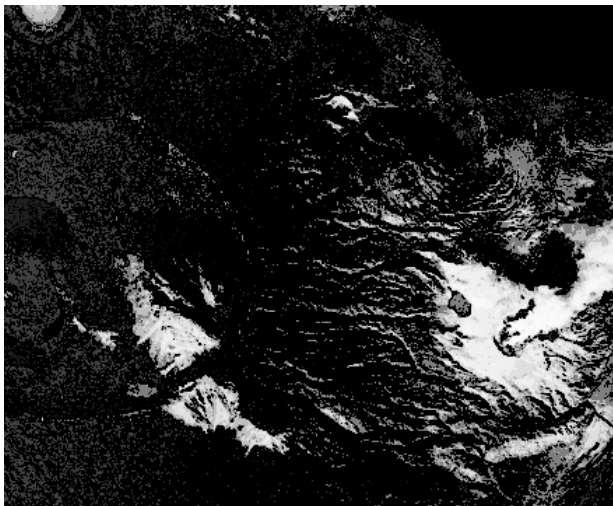


図1 1944年に撮影された空中写真