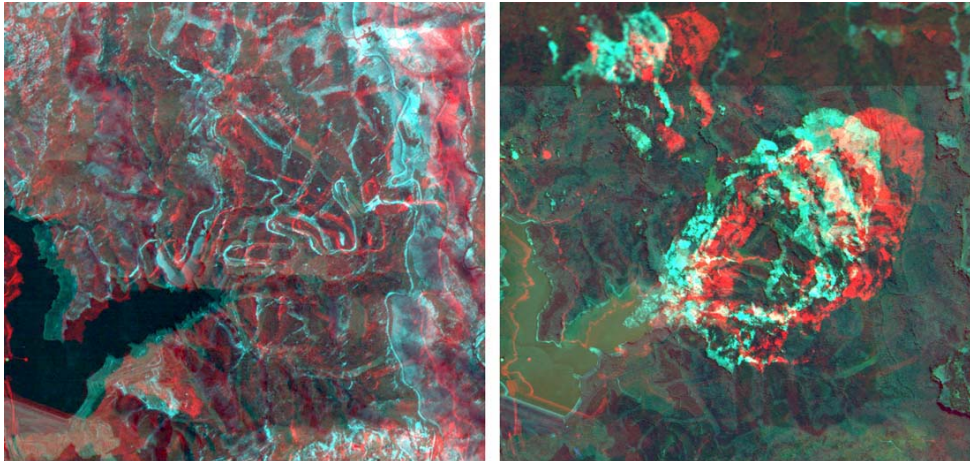


Interpretation of geomorphological features by ALOS pan-sharpened stereo imagery. Part 4: Aratozawa Landslide

Syogo Takemoto[1]; Shingo Sato[1]; Takashi Souma[2]; Michio Shirasawa[2]; Ryuzo Yokoyama[2]

[1] Fukken Gijyutsu Consultant; [2] CCRD, Iwate Univ.

Japanese text only.



地震前 2007/3/1

地震後 2008/7/2

荒砥沢ダムのALOSパンシャープン立体視画像(アナグリフ)