

Discretization of dominant periods observed in the 2010 Solomon tsunami

Kuniaki Abe^{1*}

¹Junior College at Niigata, NDU

The 2010 Solomon tsunami was observed at eight tide stations in Japan and the dominant periods were determined from the spectra. The dominant periods were compared between the spectra before and after the arrival. As the result it was concluded that the dominant periods tended to become longer and the distribution was discretized. We used dominant periods observed in seiche as the bases. The spectra after the arrival are shown in Figure 1 and shifts of the dominant periods being accompanied with the tsunami arrival is shown in Figure 2.

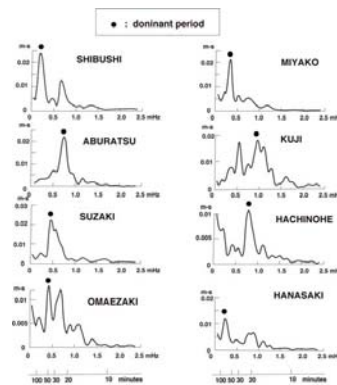


Fig. 1

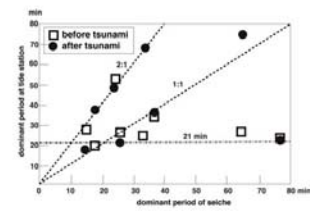


Fig. 2

Keywords: Solomon tsunami, dominant period, seiche, tsunami spectra