

## Information Synthesis and Interpretation System (3) Modeling Area Setting and Groundwater Flow Modeling

Hiromitsu Saegusa<sup>1\*</sup>, Keisuke Maekawa<sup>1</sup>, Takuya Ohyama<sup>1</sup>, Takeshi Semba<sup>1</sup>

<sup>1</sup>JAPAN ATOMIC ENERGY AGENCY

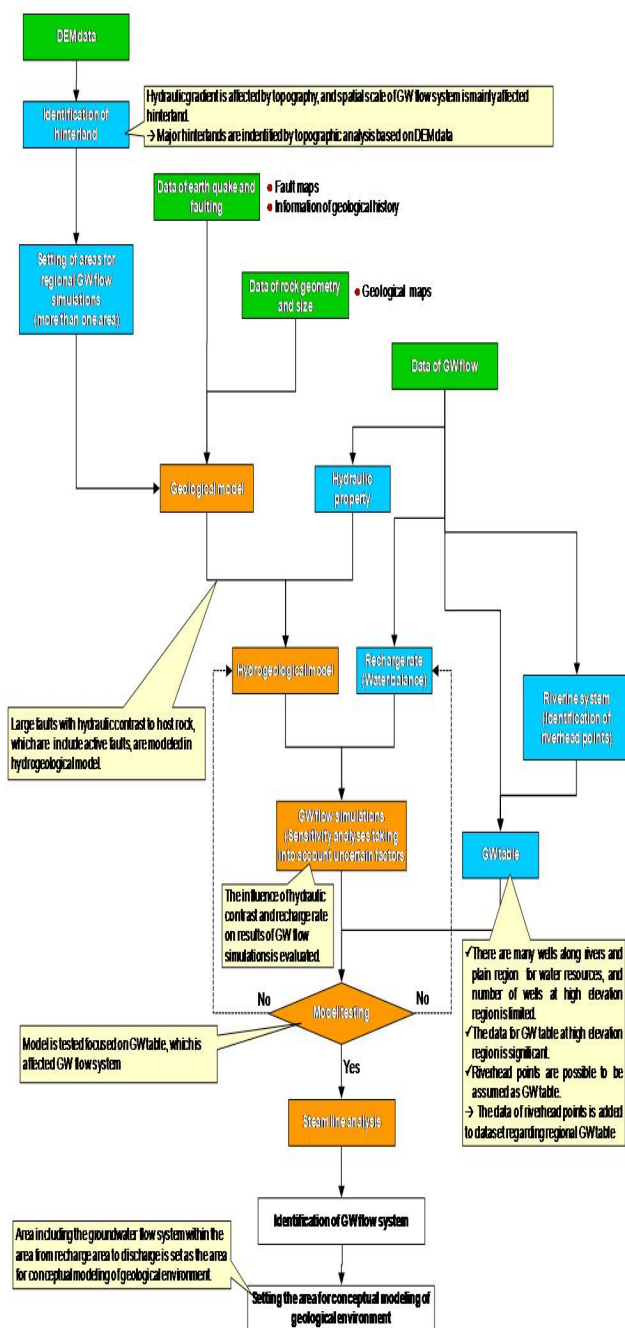


Figure 1 Workflow for setting of area for modeling of geological environment

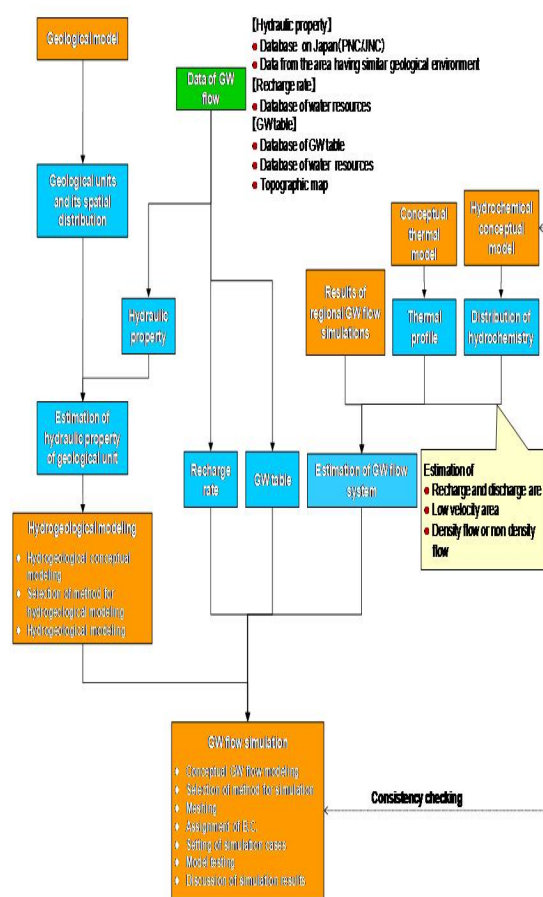


Figure 2 Workflow for groundwater flow modeling

Technical know-how and decision process of techniques to be used in surface-based site characterization are being specified in order to develop knowledge base. In this study, the detail work and its procedure regarding setting of area for modeling of geological environment and groundwater flow modeling for hydrogeological characterizations have been summarized based on experience on Mizunami and Horonobe underground research laboratory projects. The results of the study are expected to be used on literature survey stage in implementing disposal of high-level radioactive waste.

Keywords: Surface-based site characterization, Area for modeling, Groundwater flow modeling, Knowledge base