

SVC061-12

会場: 201B

時間: 5月25日16:45-17:00

## インド洋かいいい熱水フィールドでの地球物理調査ー深海掘削提案に向けて

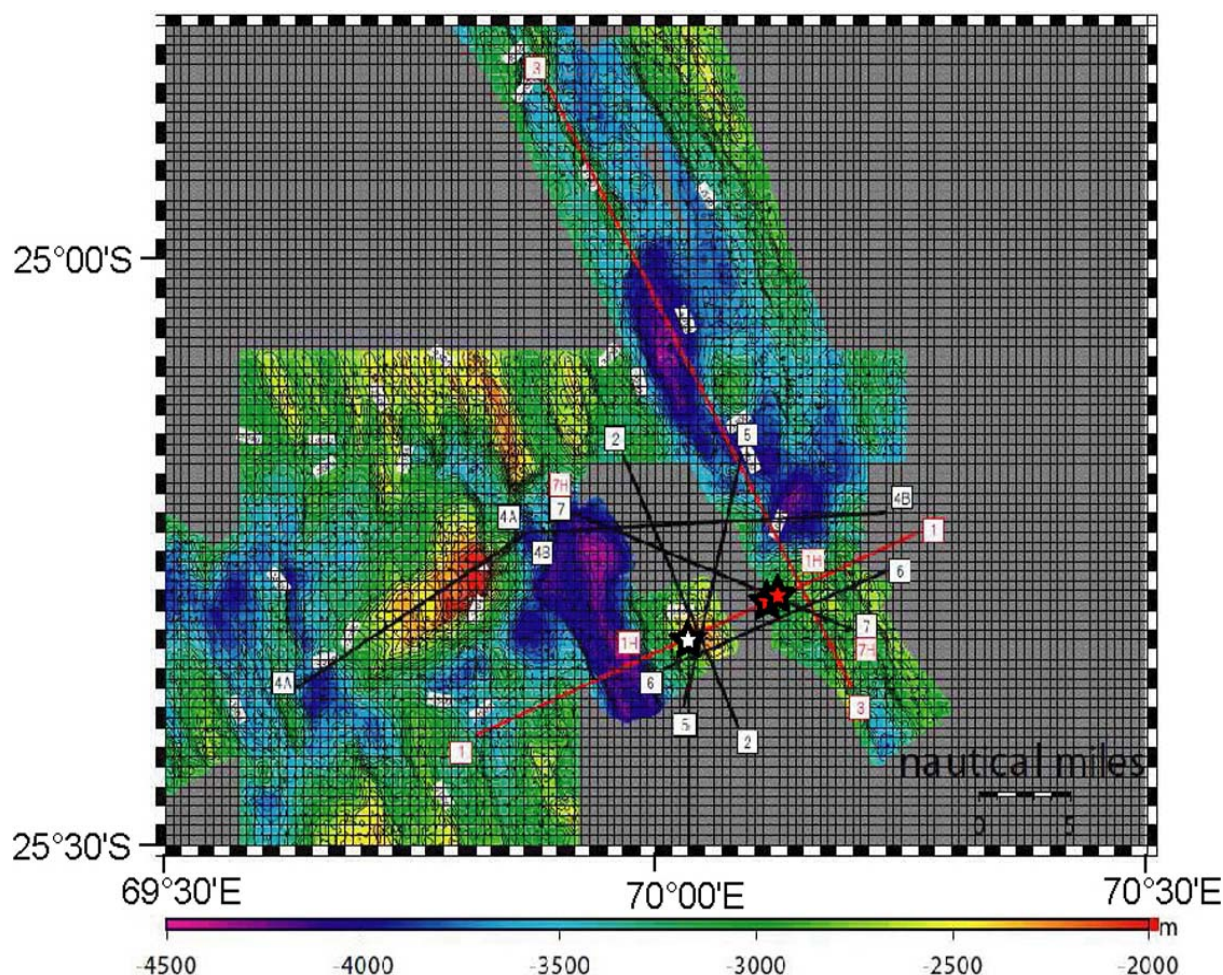
### Geophysical survey near the Kairei hydrothermal field, Indian Ocean: Toward an IODP drilling

熊谷 英憲<sup>1\*</sup>, 辻 健<sup>2</sup>, 中村 謙太郎<sup>1</sup>, 正木 裕香<sup>3</sup>, 森下 知晃<sup>4</sup>, 渋谷 岳造<sup>1</sup>, 木下 正高<sup>5</sup>,  
清水 賢<sup>6</sup>, 町田 秀介<sup>6</sup>, 前川 拓也<sup>6</sup>, 高井 研<sup>1</sup>

Hidenori Kumagai<sup>1\*</sup>, Takeshi Tsuji<sup>2</sup>, Kentaro Nakamura<sup>1</sup>, Yuka Masaki<sup>3</sup>, Tomoaki Morishita<sup>4</sup>,  
Takazo Shibuya<sup>1</sup>, Masataka Kinoshita<sup>5</sup>, Satoshi Shimizu<sup>6</sup>, Syusuke Machida<sup>6</sup>,  
Takuya Maekawa<sup>6</sup>, Ken Takai<sup>1</sup>

<sup>1</sup>独立行政法人海洋研究開発機構PEL, <sup>2</sup>京都大学工学系研究科社会基盤工学専攻, <sup>3</sup>高知大学大学院理学研究科,  
<sup>4</sup>金沢大学フロンティアサイエンス機構, <sup>5</sup>独立行政法人海洋研究開発機構IFREE, <sup>6</sup>日本海洋事業株式会社

<sup>1</sup>Precambrian Ecosystem Laboratory, JAMSTEC, <sup>2</sup>Dept. Civil & Earth Res. Eng., Kyoto Univ.,  
<sup>3</sup>Dept. Applied Science, Kochi Univ., <sup>4</sup>Frontier Science Org., Kanazawa Univ., <sup>5</sup>IFREE, JAMSTEC,  
<sup>6</sup>Nippon Marine Enterprise Ltd.



Sea floor hydrothermal system attracts broad interests since its discovery in mid-70s. A remarkable feature of the habitat around hydrothermal fields is that lithotrophic micro-organisms are independent from energy derived from sunlight. Because such an environment around the deep sea hydrothermal field resembles early stages of the Earth's history where the first ecosystems had established, the ecosystems around the deep sea hydrothermal field seem to be modern proxies of an early evolutionary progenitor of the Earth's history. Consequently, some predominant ideas related to the origin of life specifically relate to the deep-sea hydrothermal system.

Within such hydrothermalism, Kairei hydrothermal field have been focused to its unique assemblages of the microorganism and fluid chemistry. The Kairei hydrothermal field is known by its remarkably high concentration of hydrogen in its vent water along the intermediate rate spreading Mid-Ocean Ridges. It developed at the shoulder of the western flank of the Hakuho-Knoll, one of the abyssal hills near Rodriguez Triple Junction, Indian Ocean. Although such abyssal hills are normally parallel to the ridge axes, it slightly obliquely elongated to the present ridge axis.

Seismic and heatflow survey as the part of the comprehensive geophysical survey were conducted in YK09-13 Leg2 around the Kairei hydrothermal field. Total 66 hours of Single Channel Seismic survey (SCS) were performed to investigate the shallow structure near the hydrothermal field. Although the limited penetration of seismic waves, clear high angle normal faults were found in the SCS images at western flank of the Hakuho-Knoll near Kairei hydrothermal field. Normal heatflow values on the young plate near an active Mid-Ocean Ridge were recorded at the two stations behind the Kairei hydrothermal field. The measurements were performed using short heatflow probe (SAHF) at Shinkai6500 submersible dive #1173.

Figure: SCS survey lines and heatflow stations around the Kairei hydrothermal field. Within seven survey lines of SCS (shown as solid lines), red lines show those where high density shooting were carried. Red stars: heatflow stations. White star: Kairei hydrothermal field.

キーワード: かいれい熱水フィールド, インド洋ロドリゲス海嶺三重点, シングルチャンネル地震波探査, 地殻熱流量測定, YK09-13 Leg2

Keywords: Kairei hydrothermal field, Rodriguez Triple Junction, Indian Ocean, Single Channel Seismic survey, Heatflow measurement, YK09-13 Leg2