

MIS036-P120

会場:コンベンションホール

時間:5月27日 14:15-16:15

東北地方太平洋沖地震に伴う津波の高解像度浸水域・遡上高調査 High resolution survey results for the inundation limit and height of the 2011 Tohoku earthquake tsunami

阿部郁男⁹, 阿部 朋弥¹⁰, 新井 和乃⁷, 藤間功司³, 藤野 滋弘⁸, 郷右近英臣¹, 後藤 和久², 原田 賢治⁶, 原口 強⁵, 今井 健太郎¹, 今村文彦¹, 越村 俊一¹, 村嶋陽一¹¹, 成瀬 元⁷, 門廻充侍⁴, 嶋原 良典³, 菅原 大助¹, 高橋 智幸^{4*}, 津高亮太³, 山下翔大⁷

Ikuo Abe⁹, Tomoya Abe¹⁰, Kazuno Arai⁷, Koji Fujima³, Shigehiro Fujino⁸, Hideomi Gokon¹, Kazuhisa Goto², Kenji Harada⁶, Tsuyoshi Haraguchi⁵, Kentaro Imai¹, Fumihiko Imamura¹, Shunichi Koshimura¹, Yoichi Murashima¹¹, Hajime Naruse⁷, Shuji Seto⁴, Yoshinori Shighihara³, Daisuke Sugawara¹, Tomoyuki Takahashi^{4*}, Ryota Tsudaka³, Shota Yamashita⁷

¹ 東北大学, ² 千葉工業大学, ³ 防衛大学校, ⁴ 関西大学, ⁵ 大阪市立大学, ⁶ 静岡大学, ⁷ 千葉大学, ⁸ 筑波大学, ⁹ 富士常葉大学, ¹⁰ 名古屋大学, ¹¹ 国際航業株式会社

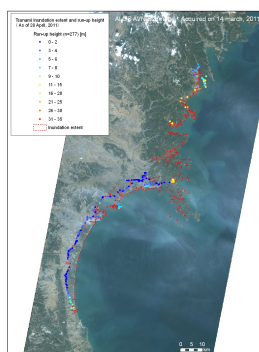
¹Tohoku University, ²Chiba Institute of Technology, ³National Defense Academy of Japan, ⁴Kansai University, ⁵Osaka City University, ⁶Shizuoka University, ⁷Chiba University, ⁸University of Tsukuba, ⁹Fuji Tokoha University, ¹⁰Nagoya University, ¹¹Kokusai Kogyo Holdings Co., LTD.

An earthquake of magnitude 9.0 occurred off the Pacific coast of Tohoku, Japan, on March 11, 2011. The tsunami devastated the northeast coasts of the Tohoku district and the maximum run-up height was measured nearly 39 m at Sanriku area. The remarkable feature of this tsunami was the range of inundation areas. In fact, on the Sendai plain, the tsunami inundated more than 5 km inland. Emergency field surveys were conducted by many Japanese groups in the devastated area and they measured the inundation depths or building damages near the shore. Satellite and aerial photographs were studied by multiple societies, universities and companies, and inundation limit was estimated from such photographs immediately after the tsunami. We also measured the inundation limit of the northeast coast of the Tohoku district by the analysis of the ALOS AVNIR2 image that was taken on 14th March.

In order to validate the results of the satellite image analysis and to confirm the maximum inundation limit in the wide area, we organized a research group and conducted high-resolution surveys of the inundation limit and height in the few-centimeter accuracy by using GPS measurement system (Promark3) in Miyagi, Iwate, and Aomori prefectures. The horizontal measurement interval is ranging from approx. 500 m to few kilometers and we measured nearly 300 sites until the end of April.

We preliminarily confirmed that the inundation limit estimated from the satellite image is well consistent with the field measurement results at most places, although there are some exceptions that might have not been interpreted from the satellite images. We still continue our survey to cover whole devastated area before the tsunami watermarks were removed or washed away in the rainy season.

This research is funded by Tohoku University. The survey team member is listed in an alphabetical order.



キーワード: 2011年東北地方太平洋沖地震津波, 現地調査, 津波浸水域, GPS 測位

Keywords: The 2011 Tohoku tsunami, Field survey, Tsunami inundation extent, GPS measurement