

# Japan Geoscience Union Meeting 2011

(May 22-27 2011 at Makuhari, Chiba, Japan)

©2011. Japan Geoscience Union. All Rights Reserved.



HGG001-01

会場:201A

時間:5月26日 08:30-08:55

## ICSU 提唱のグランドチャレンジズへの GLP の取組 - 日本の視点 The Grand Challenges of ICSU and GLP - A Japan View

氷見山 幸夫<sup>1\*</sup>

Yukio Himiyama<sup>1\*</sup>

<sup>1</sup> 北海道教育大学

<sup>1</sup>Hokkaido University of Education

Land is one of the vital resources for human being, but it is under a mounting pressure from competing land uses, land degradation, reckless land transformation, ecosystem disturbances, land-related hazards, water shortages, nutrient depletion, massive mineral extraction, etc. Global Land Project (GLP) has been involved in such hot environmental issues for years, but its research efforts have been relatively modest in the light of the rapidly worsening situation. The Grand Challenges, an international decadal research guideline for global sustainability announced by ICSU (International Council for Science) in October 2010, offers a great opportunity of activating research related with GLP under a joint partnership of natural and social scientists. The present paper discusses what GLP-Japan should do in cooperation with the geosciences community in Japan under the framework of the Grand Challenges.

キーワード: GLP, 国際科学会議, グランドチャレンジ, 持続可能性, 土地利用, 地球人間圏科学

Keywords: GLP, ICSU, Grand Challenges, sustainability, land use, human geosciences

# Japan Geoscience Union Meeting 2011

(May 22-27 2011 at Makuhari, Chiba, Japan)

©2011. Japan Geoscience Union. All Rights Reserved.



HGG001-02

会場:201A

時間:5月26日 08:55-09:10

## Global Land Projectの活動について Current activities of Global Land Project

柴田 英昭<sup>1\*</sup>

Hideaki Shibata<sup>1\*</sup>

<sup>1</sup>Hokkaido University

<sup>1</sup>Hokkaido University

Global Land Project (GLP) is research program for land system to measure, model and understand the coupled human-environment system as a core-project of International Geosphere-Biosphere Program (IGBP) and International Human Dimensions Program on Global Change (IHDP). GLP is operated by Scientific Steering Committee (SSC) consists of relevant scientists and International Project Office (IPO) currently based at University of Copenhagen, Denmark. GLP has three thematic nodal offices in Aberdeen (UK), Beijing (China) and Sapporo (Japan). Here, I report the previous outcomes, current status, on-going activities and future direction of the GLP as a member of SSC.

Keywords: Land system, Coupled human-environment systems, Land use changes, Global environment changes

HGG001-03

会場:201A

時間:5月26日 09:10-09:25

## モンゴル草原とマレーシア熱帯林の生態系ネットワークの比較 Comparison of ecosystem networks in Mongolia grassland and Malaysia forests

山村 則男<sup>1\*</sup>

Norio Yamamura<sup>1\*</sup>

<sup>1</sup> 総合地球環境学研究所

<sup>1</sup> Res. Inst. for Humanity and Nature

Remarking specially the network structure of social-ecological systems, we are executing a project titled 'Collapse and Restoration of Ecosystem Networks with Human Activity' ([http://www.chikyu.ac.jp/rihn\\_e/project/D-04.html](http://www.chikyu.ac.jp/rihn_e/project/D-04.html)) in Research Institute for Humanity and Nature ([http://www.chikyu.ac.jp/index\\_e.html](http://www.chikyu.ac.jp/index_e.html)). 'Ecosystem Network' is the key concept that we propose newly in this project. It is the social-ecological system where network of ecological subsystems characterized by land-cover or land-use, such as grassland, forests, rivers, agricultural fields and mine areas, with human network affecting quality of and transition among the subsystems. The usefulness of this concept is to see the human impacts through changes in land-cover, of which data are available from statistics, field survey and satellite information.

Field research takes place in tropical rainforests in Sarawak, Malaysia, and grasslands of Mongolia. In the last few decades, social and environmental conditions in both places were profoundly affected by resource extraction, which has recently intensified in relation to demand from global economy. Though their ecological characteristics, such as the regeneration time of vegetation and position of humans in the food web, are quite different, the livelihoods of many inhabitants of these regions are dependent on natural ecosystems.

In Mongolia, we: (1) found the most serious environmental problem to be increased degradation of pastures, especially near Ulan Bator, caused by overgrazing by an increasing number of livestock, especially goats; (2) studied the social patterns leading to concentrations of livestock to urban areas; (3) analyzed climate data in order to clarify the roles of forests and shrubs in maintaining sustainable pastures; and (4) conducted scenario analysis of the effects of several options, such as restriction of the number of livestock and restriction of the movement of livestock through privatization of land, on pasture degradation.

In Sarawak, we: (1) found the most serious environmental issues to be the mass logging of forests and expansion of palm plantations, and their negative effect on biodiversity and forest resources available to inhabitants; (2) conducted questionnaire surveys along the Rajang and Baram rivers, two main rivers in Sarawak, in order to identify the reasons; (3) examined biodiversity patterns of several plants and animals depending on human activities; (4) analyzed the effectiveness of, and problems with, institutions and systems such as forest certification and bio-prospecting in regulating rapid plantation developments.

Finally, we have begun to develop a general theory of conservation of ecosystem networks. In this process, we found that the networks have remarkable difference between grassland and forest systems. This is based on differences in economic properties for humans in the two ecosystems. In Mongolia, the vegetation itself (grasses) has no direct value for humans; the value is stored in livestock that feeds on the grasses. Therefore, global economy affects the behavior of inhabitants, leading to overuse of the vegetation and degradation of the grassland. In this case, the effective solution to the problem should involve changing the behavior of inhabitants. On the other hand, in Sarawak, the economic value is stored in the vegetation (trees). Therefore, enterprises and governments tend to severely develop the forests, causing both reductions in the amount of forest available to inhabitants and biodiversity loss. The effective solution here should involve regulation of enterprises and governments. We are exploring a mathematical model representing the difference of networks, and examining effective strategies for sustainable management of the systems.

キーワード: 生態系ネットワーク, モンゴル草原, マレーシア熱帯林, シナリオ分析, ネットワーク保全理論

Keywords: Ecosystem network, Mongolia grassland, Malaysia rain forests, Scenario approach, Network conservation theory

HGG001-04

会場:201A

時間:5月26日 09:25-09:40

## アジアにおける生態系の純一次生産と人間生産 - 陸域生態モデルの応用 - Application of a terrestrial ecosystem model to assess human appropriation of net primary production in Asia

庄山 紀久子<sup>1\*</sup>, 山形 与志樹<sup>1</sup>, 甲山 隆司<sup>2</sup>  
kikuko shoyama<sup>1\*</sup>, Yamagata Yoshiki<sup>1</sup>, Takashi Kohyama<sup>2</sup>

<sup>1</sup> 国立環境研究所, <sup>2</sup> 北海道大学

<sup>1</sup>National Institute for Environmental Stu, <sup>2</sup>Hokkaido Univerity

Human appropriation of net primary production (HANPP) is a major indicator of human pressures on ecosystems. Land use induced changes in the productivity affect the processes and functions of ecosystems and they are associated with the provision of ecosystem services, such as the provision of biomass through agriculture and forestry, and the regulation services such as the absorption capacity for GHG emissions. A number of studies have been assessed the amount of human induced changes of NPP in the global level and calculated in spatially explicit way. However, the analysis of socio-economic drivers of the changes is still remaining as the main topic in the field. The interrelations between HANPP and social structures and processes are priority of global change research (Haberl et al. 2008).

The methodologies for credible HANPP assessment have been established in the previous studies. The proposed three parameters are (1)NPP0: NPP of the vegetation that would be assumed to prevail in the absence of human use (potential vegetation), (2)NPPact: NPP of the currently prevailing vegetation (actual vegetation), (3)NPPh: human harvest of NPP (e.g., through agriculture and forestry). We estimated these parameters in Asia using a process-based ecosystem model that describes carbon and nitrogen dynamics of plants and soils for terrestrial ecosystems of the globe. The socio-economic data on crop and timber harvest was applied to estimate the amount of human harvest of NPP. The parameters were calculated for each political unit to discuss social structures responding to various ecosystems. Based on the estimated parameters, we suggest the effective methodology combining spatially explicit gridded data and socio-economic statistical data.

Keywords: human appropriation of NPP, process-based ecosystem model, land use change, social adaptation

HGG001-05

会場:201A

時間:5月26日 09:40-09:55

## キルギス・パミールにおける最近の土地利用変化と自然資源利用変化 Recent changes in land use and natural resources use in the Kyrgyz Pamir

渡辺 悌二<sup>1\*</sup>, レンバイアテライト ガウナビナカ<sup>1</sup>, 平川一臣<sup>1</sup>, 澤柿 教伸<sup>1</sup>, 水嶋一雄<sup>2</sup>, 落合康浩<sup>2</sup>, 岩田 修二<sup>3</sup>, 泉山茂之<sup>4</sup>

Teiji Watanabe<sup>1\*</sup>, Lebaiatelaite Gaunavinaka<sup>1</sup>, Kazuomi Hirakawa<sup>1</sup>, Takanoobu Sawagaki<sup>1</sup>, Kazuo Mizushima<sup>2</sup>, Yasuhiro Ochiai<sup>2</sup>, Shuji Iwata<sup>3</sup>, Shigeyuki Izumiyama<sup>4</sup>

<sup>1</sup>北海道大学, <sup>2</sup>日本大学, <sup>3</sup>立教大学, <sup>4</sup>信州大学

<sup>1</sup>Hokkaido University, <sup>2</sup>Nihon University, <sup>3</sup>Rikkyo University, <sup>4</sup>Shinshu University

The Kyrgyz Republic became independent from the former Soviet Union in 1991. The country has become suffered from severe poverty since the independence. The southernmost area of the Kyrgyz Republic is one of the least developed areas in the country. The largest issue in the area, therefore, is to bring economic development to mitigate poverty. The area consists of the Alai valley and two mountain ranges, i.e., the Alai Range to the north and the Za-Alai Range to the south. The valley floor starts at the altitude of 2,240 m in the western Alai area (Karamyk), and goes up the altitude of 3,160 m in the eastern Alai area (Sary Tash), which exceeds the cultivation limit. Transhumance is the primary industry of the entire Alai area. Sustainable use of land and natural resources is a key to mitigate poverty. This study first examined the characteristics of the current land use, and identified changes of land use before and after the independence focusing on pastureland. Then, this study examined the status of nature resources consumption, and discussed sustainability in the area.

The current land use map was prepared by re-digitizing the land use/land cover map of Baird (2008) for the purpose of re-categorization: 15 categories were re-classified into 6 categories of agricultural land, high mountain pastures, mountain pastures, forest, bare ground, and nival zone (snow and ice). The re-classified map shows that high mountain pastures dominate the majority of the land cover in the entire Alai area (88.3% in the western Alai, 48.1% in the central Alai, and 52.2% in the eastern Alai). Agricultural land ranges from 0.3% (western Alai) to 3.3% (central Alai). Non-usable land (bare ground and nival zone) occupies more than 40% in the central and eastern Alai, but it can serve as a good ecotourism resource.

Agriculture production is observed mainly in western and central Alai, and none in the eastern Alai. Hence, the eastern Alai needs more dependence on livestock and alternative income generation. The area of pasturelands (high mountain pastures and mountain pastures) in the eastern Alai, however, was smaller than other areas, especially western Alai. The number of grazing animals is also small in the eastern Alai.

The valley is suitable for grazing of sheep, goats, cows, yaks, and horses, which has been the largest industry in the area. Spatial patterns of grazing have changed after the independence in 1991. Local residents witnessed that more grazing is presently practiced near the villages. This could be a major factor causing soil erosion on the slopes near villages and roads. However, the interview surveys suggested that such soil erosion had occurred before the independence. This contradicts the general view by international donor agencies, which promote land degradation mitigation projects.

The interview survey conducted in 2008 and 2009 suggests that several wildlife species inhabit the Alai valley area such as ibex, lynx, bear, marmot and fox, although argali (Marco Polo sheep) is threatened by extinction. Ibex and marmots have been consumed in the valley. Local residents should realize that such wildlife could be ecotourism resources: it is, therefore, suggested to conserve the wildlife. On the other hand, more wolves have become attacking domestic animals since the independence.

The questionnaire survey in 2008 suggests that many residents favor development of ecotourism because of the far behind economy. Ecotourism to be developed in this area should be connected to agriculture, grazing, and artifact. Not only establishing ecotourism in the eastern and central Alai areas but also developing markets of agricultural products within the valley (supplying agricultural products from the western Alai area to the eastern and central Alai areas) would help augment sustainability in the entire Alai area.

キーワード: パミール高原, 土地利用, 貧困, 自然資源消費, 放牧地, 持続的開発

Keywords: The Pamir, land use, poverty, natural resources consumption, pastureland, sustainable development

HGG001-06

会場:201A

時間:5月26日 09:55-10:10

## 里山の生物多様性と生態系サービスの統合的評価

### Assessment of biodiversity and ecosystem services of Satoyama, traditional rural landscape of Japan

大黒 俊哉<sup>1\*</sup>, 角媛梅<sup>2</sup>  
Toshiya Okuro<sup>1\*</sup>, Yuanmei Jiao<sup>2</sup>

<sup>1</sup> 東京大学, <sup>2</sup> 雲南師範大学

<sup>1</sup>The University of Tokyo, <sup>2</sup>Yunnan Normal University

Satoyama is a Japanese word used to refer to the mosaic of mixed coppice forests, rice paddy fields, upland fields, grasslands, streams, ponds, reservoirs for irrigation and settlements that make up the traditional rural landscape of Japan. Although social, political and economic changes since 1960s such as agricultural innovations and fuel revolution have caused declines in ecosystem services and biodiversity in Satoyama, recent socio-economic and environmental situations have raised the people's awareness of energy and food securities, and potential values of Satoyama. Millennium Ecosystem Assessment has also chosen Satoyama and Satoumi (local coastal waters) as a target for sub-global assessment. However, little is known about the changes of biodiversity and ecosystem services, and their relation in Satoyama at national scale. In this study we devised indicators to assess biodiversity of Satoyama and developed models to assess regulating services at national scale using common database such as "digital national land information". We assessed biodiversity at national scale by using JOIN values (e.g. paddy-forest, paddy-built-up area). We also developed assessment models of regulating services by modifying existing models and measured the values of several regulating services. Those values were compared among rural landscape types which were established by Rural Landscape Information System (RuLIS) of Japan. The results suggested that the spatial and temporal conditions and trends of biodiversity and regulating services could be evaluated effectively by using RuLIS landscape types.

キーワード: 里山, 生物多様性, 生態系サービス

Keywords: satoyama, biodiversity, ecosystem service

HGG001-07

会場:201A

時間:5月26日 10:10-10:30

## ENVIRONMENTAL IMPLICATIONS OF AGRICULTURAL DEVELOPMENT IN PATIALA DISTRICT, PUNJAB, INDIA ENVIRONMENTAL IMPLICATIONS OF AGRICULTURAL DEVELOPMENT IN PATIALA DISTRICT, PUNJAB, INDIA

R.B. Singh<sup>2\*</sup>

R.B. Singh<sup>2\*</sup>

<sup>1</sup>Dept. Geography, Univ. of Delhi, India, <sup>2</sup>Geography, Univ. of Delhi, India

<sup>1</sup>Dept. Geography, Univ. of Delhi, India, <sup>2</sup>Geography, Univ. of Delhi, India

The green revolution in India, one of the most remarkable achievements in the field of agriculture has led to self sufficiency in food production which increased from mere 51 million tonnes in 1950-51 to 210 million tonnes in 2006-07. The new technology has not only increased agricultural production, but also created a wide range of environmental problems viz., deforestation, water logging, salinity, alkalinity and ground water pollution in the fertile tract of Punjab. Intensification of land development over the years has led to degradation of the fragile agro-ecosystem of the state. The present study of Patiala district is mainly an agricultural district as 82.61 per cent land area is under cultivation. The blockwise consumption of ground water shows that out of nine blocks, eight blocks were categorized as overexploited blocks where the ground water development is above 100 per cent, whereas only one block was under white category. High yielding varieties of water intensive crops like rice and wheat require larger amounts of ground water that has resulted in ground water depletion. It was analyzed that certain blocks like Derabassi and Ghanaur obtained a very high growth rate (1994-95 to 2006-07) of 35 per cent in terms of areal extent of cultivation of rice. Similarly, blocks like Rajpura has a high growth rate of 18 per cent in wheat cultivation during the same time period. The two hypotheses postulated were tested with the help of correlation technique. One of the hypotheses regarding the relationship between agricultural development and ground water depletion was found to be positive relationship as the calculated  $r$  value was 0.06. This suggests that there is a positive or direct relationship between the level of agricultural development and ground water depletion. The other hypothesis regarding the relationship between environmental degradation and level of agricultural development proves to be negative ( $r = -0.05$ ) which means that there is an indirect relationship between the two. In other words higher is the level of environmental degradation lesser will be the level of agricultural development. The problem related to burning of crop residue especially rice straw which is adding poisonous gases into the atmosphere but is also responsible for depleting soil nutrients from the soil. This local issue has large global implications. It can be dealt through the alternative use of straw as a fuel in factories or consumed by animals as fodder after refinement.

キーワード: Green revolution, Land intensification, Environmental degradation, Crop residue burning, Punjab, India

Keywords: Green revolution, Land intensification, Environmental degradation, Crop residue burning, Punjab, India

# Japan Geoscience Union Meeting 2011

(May 22-27 2011 at Makuhari, Chiba, Japan)

©2011. Japan Geoscience Union. All Rights Reserved.



HGG001-08

会場:201A

時間:5月26日 10:45-11:00

## インドにおける共同森林経営 (JFM) の現状と課題 The present situation and issues of Joint Forest Management (JFM) in India

木本 浩一<sup>1\*</sup>

Koichi Kimoto<sup>1\*</sup>

<sup>1</sup> 広島女学院大学

<sup>1</sup>Hiroshima Jogakuin University

In India, after the continuing forest loss, the Joint Forest Management (JFM) began in the 1990s. In the early 1980s the rate of forest cover fell to 10%, and it has recovered to over 20% in the 20 years. JFM is one type of Participatory Forestry spread all over the world, which has been praised these achievements. But, looking at the quality of the forest, we can see the fact that the dense forest has continuously changed to the scrub. And we cannot altogether regard them as a good thing.

In this study, we would like to discuss about the current situation and issues, by comparison of the JFM between the northern India (Rajasthan, Haryana) and the southern India (Karnataka, Tamil Nadu). In the south, we will discuss the relationship between the conservation of the dense forest and JFM at the southern part of the Western Ghats on the border region between Karnataka and Tamil Nadu. Karnataka state is the most advanced state of the deforestation. In the north, we will focus to the so-called the evaluation of the afforestation project. For more, we will pay attention to the features of the broader land use by dealing with not only forests but the *region* of including forests.

キーワード: 共同森林経営, 森林減退, ラジャスタン, カルナータカ

Keywords: Joint Forest Management, Deforestation, Rajasthan, Karnataka



HGG001-09

会場:201A

時間:5月26日 11:00-11:20

## Trend on Jabodetabek Region LUCC\_Urban expansion and sustainable issues in regional and national context Trend on Jabodetabek Region LUCC\_Urban expansion and sustainable issues in regional and national context

Ernan Rustiadi<sup>1\*</sup>, Didit Okta Pribadi<sup>1</sup>, Titan Agrisantika<sup>1</sup>, Andrea Emma Pravitarsari<sup>1</sup>, Diar Shiddiq<sup>1</sup>  
Ernan Rustiadi<sup>1\*</sup>, Didit Okta Pribadi<sup>1</sup>, Titan Agrisantika<sup>1</sup>, Andrea Emma Pravitarsari<sup>1</sup>, Diar Shiddiq<sup>1</sup>

<sup>1</sup>CrestPent, Bogor Agricultural University

<sup>1</sup>CrestPent, Bogor Agricultural University

The study focuses to describe spatial development characteristics of so call Jabodetabek Region. For that purpose, the study examines the spatial dynamics of urban development of Jabodetabek Region as the Greater Jakarta expansion. Being significantly different from the urbanization and suburbanization in USA and Europe and other countries, the continuing outward expansion of Jabodetabek Region have not only some similarity in many aspects of urban development spatial pattern, but also showed some significant differences. The development of Jabodetabek Region have similar in their trend to be the primate city of its country whereas the urban systems arising with densely population, mixed land uses and mixed economic activities of the inhabitants in their suburb. On the other hand, agriculture land uses, especially rice fields areas and the spread of farming households in the suburbs are still significant but spatially distributed in a different pattern.

This study aims to: (1) describe spatial pattern and dynamics of land use cover changes (LUCC) of Jabodetabek Megapolitan during the period of 1972-2010 due to its dynamics of population and socioeconomic; and (2) develop some urban expansion models to forecast environmental impacts. Satellite images and GIS analysis were employed for LUCC analysis. Statistics analysis of spatial decay function models were employed to analyze spatial pattern of LUCC and demographic patterns. Suburbanization and a weak system of integrated planning imply to many environmental problems such flood, drought, sea-water intrusion, etc. It's also impact on economic inefficiency on natural resources use. The hegemony of economy in Jabodetabek is not balanced by sufficient multiplier effects on the national economy. Further, it has brought about a social fragmentation that is likely to sharpen potential social conflicts among the communities in the suburban areas.

Spatial polarization of economic activities of Jabotabek region makes contrast the city's core with its surrounding areas in Jabotabek Region. Urban development of Jabotabek Region tends to form a concentric spatial distribution of land use and socioeconomic aspects. The core of Jabotabek Region is highly predominated by manufacture and services activities and it has been surrounded by highly mixed land use urban fringe and the most remote areas predominated by agricultural land uses and farmers settlement areas.

The hegemony of national economy in Jabodetabek, particularly as a result of the dominant contribution of tertiary and primary sectors in the region is in fact not accompanied by the presence of adequate multiplier effects on the national economy. Instead, what happens is the backwash phenomenon between DKI Jakarta and other regions in Indonesia outside the metropolitan. A synergic (generative) interrelationship between the development of this region and other Indonesian regions can be created by integrating the strategies of regional development.

キーワード: land use/cover change (LUCC),, Jabodetabek megapolitan, spatial distribution of land use, suburbanization,  
Keywords: land use/cover change (LUCC),, Jabodetabek megapolitan, spatial distribution of land use, suburbanization,

HGG001-10

会場:201A

時間:5月26日 11:20-11:35

## 中国・三江平原の地形と人間活動による土地被覆変化 Landform and Land Cover Changes by Human Activity on the Sanjiang Plain, China

室岡 瑞恵<sup>1\*</sup>, 桑原康裕<sup>1</sup>, 春山 成子<sup>2</sup>, 山縣 耕太郎<sup>3</sup>

Mizue Murooka<sup>1\*</sup>, Yasuhiro Kuwahara<sup>1</sup>, Shigeko Haruyama<sup>2</sup>, Kotaro Yamagata<sup>3</sup>

<sup>1</sup> 網走水産試験場, <sup>2</sup> 三重大学, <sup>3</sup> 上越教育大学

<sup>1</sup> Abashiri Fisheries Research Institute, <sup>2</sup> Mie University, <sup>3</sup> Joetsu University of Education

### Objective

Sanjiang Plain is located in Heilongjiang Province in northwest China, surrounded with three rivers, Amur, Sung Hua and Ussuri. There were much wetland in this place, but the wetland had been reclaimed by the Chinese government from the 1980s. To grasp how wetlands were cultivated was important, but there were merely fragmentary statistic data.

In this study, the landform map was made in advance, agricultural increase was grasped the cross-sections of the wetlands made and how wetlands decreased were clarified by satellite data. The landforms on which wetlands were reclaimed were clarified conclusively.

### Methods and Results

The authors used SRTM (Shuttle Radar Topography Mission) by NASA to make the elevation map and cross-section of the Sanjiang Plain. Sanjiang Plain was very low and flat in the middle and lower reaches of the Amur River. Landform is very flat except for some hills and mountains. The difference of the elevation is about 5 - 25m from the river.

JERS-1/SAR by JAXA data used L-band which was most suitable to observe soil water. Because the resolution of JERS-1/SAR is high (18m), the land form is classified by visual observation of texture on image.

The landform map was made by elevation map and JERS-1/SAR data. There were floodplains around rivers. The alluvial plain was surrounded with the rivers. There were three terraces on the alluvial plain. The lower and middle terraces were each separated into two terraces. The gentle slopes on the base of the mountains were around mountains. The dissected terrace valley and the swampy area on the lower and upper terraces were on the alluvial plain. Some old river course and old swampy areas were distributed near the Amur River and the Sung Hua River. Natural levees are well-developed along the Amur River. The wetlands were distributed mainly on the floodplains.

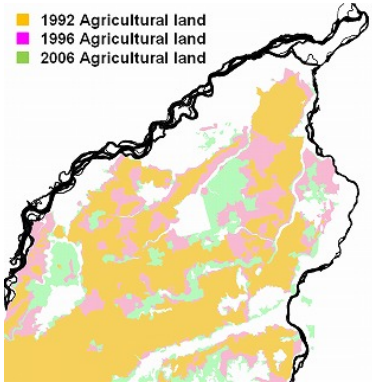
As for reclaimed land, false color of Landsat/TM was used because land cover could distinguish with a high degree of accuracy by visual observation of texture on image. The reclaimed land map of 1992, 1996 and 2006 was made. The reclaimed land had been increased from 1992 to 2006 except for Honghe national natural reservation area. The reclaimed lands were increased mainly in the alluvial plain and the floodplain from 1992 to 1996. The reclaimed lands were increased mainly in the dissected terrace valley and the swampy area on the terrace from 1996 to 2006.

In the wetlands in the field investigation, the vegetations on the wetlands were recorded and the heights of slightly elevated areas were measured with a hand level (Nobel K50-1560). The cross-sections of the wetlands on the selected landforms were made. The forms and vegetation of wetlands differs on different landforms. *Carex spp.* and *Gramineae gen. spp.* which were found typical in wetlands were the main vegetation in wetland on all landforms. In the wetlands on the lower floodplain and dissected terrace valley, there were some submerged areas. In the wetlands on the swampy area on the terrace, there were alternately dry area and wet area. In the wetlands on the alluvial plain, there were also alternately dry area and wet area but drier than the wetlands on the swampy area on the terrace. In the wetland on the mountains, there were relatively many kinds of plants.

The areas of wetlands and crop lands were calculated by JERS-1/SAR and LANDSAT/TM from 1992 to 1996. The crop lands had increased on all landforms. The wetlands on alluvial plain had been mainly cultivated.

### Conclusion

The wetlands on the alluvial plain had been reclaimed mainly. [22:32:20] The alluvial plain wetlands were easy to reclaim because they were relatively flat and dry without trees. The wetlands on the swampy area on the terraces were wet and suitable for making rice paddy. The wetlands on the lower flood plains were not good for agricultural land because they were sometimes damaged by flood.



キーワード: 地形分類図, JERS-1/SAR, 湿地  
Keywords: geomorphological map, JERS-1/SAR, wetland

HGG001-11

会場:201A

時間:5月26日 11:35-11:50

## 北京都市圏における近年の住宅開発 Recent Trends of Housing Development in Beijing Metropolitan Area

土居 晴洋<sup>1\*</sup>  
Haruhiro Doi<sup>1\*</sup>

<sup>1</sup> 大分大学  
<sup>1</sup> Oita University

中国の首都として中国だけでなく、グローバルな経済活動の中で成長している北京都市圏における住宅開発の時間的推移と地域の特徴について考察した。北京市は中国の首都であり、上海市と並んで中国を代表する経済都市でもある。したがって、北京市の住宅開発の特徴を考察することは、中国の都市地域における住宅開発に伴う土地利用変化を考察するうえで意義がある。

考察の結果は以下のようにまとめられる。北京市の住宅開発は2000年以降急速に発展したが、北京市の人口は2000年以降も継続して増加しているにもかかわらず、2005年以降は停滞傾向にある。その中において、高級住宅の開発はその増加傾向に衰えが見られないため、市政府は高級住宅の新たな開発許可を出していない。北京市内においては既に大量の高級住宅の開発が行われ、市場に登場してきている。自家用車を有する富裕世帯は市街地から離れた別荘住宅の購入を行うため、近年では北京市の行政界に隣接して別荘住宅の開発が行われるようになった。住宅開発は都心から10キロから30キロ程度の範囲で大量に行われている。これらの地域は道路や地下鉄網の整備が進み、都心地域とのアクセスが向上している。一方で、旧市街地である都心地域では、土地価格の高騰の影響もあり、住宅開発面積は減少している。

北京市政府としては高騰した住宅価格に対応できない市民へ住宅を供給するために、相対的に低価格の保障性住宅の供給を進めている。このような低価格の住宅は都心地域では開発されず、市街地から離れた郊外地域で多く建設されている。このように近年の北京市では郊外地域の住宅開発が進行しており、農地から宅地への土地利用変化が卓越している。このような都市地域の空間的拡大に対して、北京市政府はニュータウンを整備することで、多核的な都市地域構造を計画している。そのニュータウンの中に経済技術開発区が含まれ、住宅地域としての役割増大が期待されている。かつての工業化・経済発展の手段として開発された経済技術開発区が都心から郊外地域へと遷移する都市地域構造の中に位置づけられるようになったことは注目すべきである。

キーワード: 経済成長, 住宅, 郊外地域, 都市地域構造

Keywords: economic growth, residential house, suburban area, urban spatial structure

HGG001-12

会場:201A

時間:5月26日 11:50-12:05

## プーケットの土地利用変化と津波災害 Land use change and natural disaster in Phuket Island

春山 成子<sup>1\*</sup>

Shigeko Haruyama<sup>1\*</sup>

<sup>1</sup> 三重大学大学院

<sup>1</sup> Mie university

プーケット島西海岸のポケットビーチにおいて、2004年に発生した津波災害における災害時・後の各地域の対応について調査した。本研究で取り上げた4行政地区はリゾート地域の拡大過程、並びに、社会構造の史的展開過程が異なっている。ポケットビーチという自然環境を考えると、被災状況には近似しているが、自然災害を受けた地域での復興・防災活動には差異が認められ、地盤条件に不適合な土地利用変化が地域防災力に脆弱性を生み出している。最も小さな「公」としての地区をみると、地区内の組織が積極的に関わった地区と消極的な地区、地域内の災害復興にはかかわらなかった地区などに大きな地域差異を認めることができた。減災計画を考える場合には、ハードインフラとして防災施設を建設するのみではなく、災害時ならびに復興時には地域コミュニティーの活動の迅速性と持続的な活動、さらに、地域内での共助が災害難民をださないための大きな鍵を握っていると考えられる。リゾート地域が拡大していくなかで、地域社会を生活場としない人口が増加し、地域とかわらない域外からの人口移動がみられる地域では、従来、タイ社会が持っていた伝統的な地域防災力を担う機能が失われていることがわかった。持続的な地域防災力を備えること、さらに、本研究で提示できた地形環境を考慮した適切な持続可能な土地利用計画にむけた地理学からの提案が必要である。

キーワード: 津波, 土地利用, 地形, プーケット, 防災

Keywords: Tsunami, land use, landform, Phket, disaster prevention

HGG001-13

会場:201A

時間:5月26日 12:05-12:30

## Analysis of 5 years land cover transition for a study area in Central Kalimantan, Indonesia

## Analysis of 5 years land cover transition for a study area in Central Kalimantan, Indonesia

Yan Gao<sup>1\*</sup>, Robert Gilmore Pontius Jr.<sup>2</sup>, Kazuyo Hirose<sup>2</sup>, Mitsuru Osaki<sup>4</sup>, Hendrik Segah<sup>3</sup>, Takashi Kohyama<sup>4</sup>  
Yan Gao<sup>1\*</sup>, Robert Gilmore Pontius Jr.<sup>2</sup>, Kazuyo Hirose<sup>2</sup>, Mitsuru Osaki<sup>4</sup>, Hendrik Segah<sup>3</sup>, Takashi Kohyama<sup>4</sup>

<sup>1</sup>Post-doctoral researcher, <sup>2</sup>Associate Professor, <sup>3</sup>Assistant Professor, <sup>4</sup>Professor

<sup>1</sup>Post-doctoral researcher, <sup>2</sup>Associate Professor, <sup>3</sup>Assistant Professor, <sup>4</sup>Professor

The purpose of this paper is to analyze land-cover maps from two points in time for a study area within Central Kalimantan, Indonesia, in order to characterize the systematic land-cover transitions. Through this study we analyze whether the observed transitions appear to have occurred under a systematic or a random process, according to the quantitative information in the transition matrix. We construct the transition matrix to show the magnitude of each transition and to analyze the amount of gain and loss of each land cover category between 2000 and 2004. The amount of gain of a category is assessed relative to the distribution of the other categories in 2000 to compute the magnitude of the transitions be expected if the process of gain were distributed randomly across the 2000 landscape. The expected gain under a random process is then compared to the observed gain to distinguish between random and systematic transitions. In a similar manner, the expected loss under a random process is also compared to the observed loss in order to distinguish between random and systematic transitions, in terms of the losses. This paper also analyzes the net change and swap change between land cover categories. For this analysis, the net quantity change is less than 10% of the study area, while the total change is close to 35%, the latter due to considerable swap changes, which is about 25%. We identified the systematic transition between grass/scrubland and bare land. Despite the big quantity change between forest and bare land, the change is not systematic, which means when the forest loses, it is not especially vulnerable to bare land and when the bare land gains, it does not target on forest. The big quantity change is simply due to the fact that these two classes are the two largest classes in the landscape. This in depth analysis has enabled the quantification and visualization of the major signals of transitions of land cover in the study area.

キーワード: Land cover transition, Change matrix, Central Kalimantan

Keywords: Land cover transition, Change matrix, Central Kalimantan

# Japan Geoscience Union Meeting 2011

(May 22-27 2011 at Makuhari, Chiba, Japan)

©2011. Japan Geoscience Union. All Rights Reserved.



HGG001-14

会場:201A

時間:5月26日 12:30-12:45

## GLP 研究推進戦略についての総合討論 General Discussion on GLP Research Strategy

氷見山 幸夫<sup>1\*</sup>

Yukio Himiyama<sup>1\*</sup>

<sup>1</sup> 北海道教育大学

<sup>1</sup>Hokkaido University of Education

GLP 国際セッションのまとめとして、GLP 研究推進戦略についての総合討論を行う。

キーワード: GLP, 国際科学会議, グランドチャレンジ, 持続可能性, 土地利用, 地球人間圏科学

Keywords: GLP, ICSU, Grand Challenges, sustainability, land use, human geosciences