

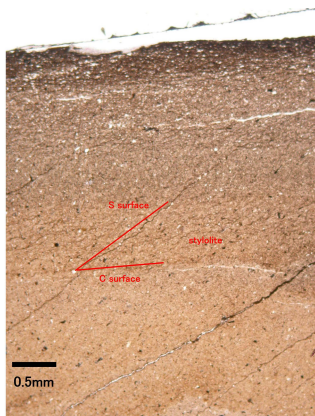
Deformation mechanism of spherical/elliptical sandstone bodies

GOTO, Shigetoshi^{1*}

¹Kyushu Civil Engineering Co.,Ltd.

Spherical blocks (10 cm to 10 m in diameter) and lenticular sandstone bodies (several centimeters to several tens of centimeters) with S-C structure are observed in Shimanto supergroup, Miyazaki Prefecture, southwest Japan. Those are emplaced under rheological conditions with frictional heat caused earthquake on fault.

Keywords: S-C structure, friction solution, rheology transition



Spherical tectonic block 12cm in diameter
(pelagic clay)