

発光バクテリアを用いたバイオアッセイによる土壌汚染評価手法の開発-土壌汚染対策法・第二種特定有害物質に関する急性毒性評価-
Development of soil pollution evaluation method using luminous bacteria -Class II Specified Chemical Substances-

杉田 創^{1*}, 駒井 武¹, 井本 由香利¹

Hajime Sugita^{1*}, Takeshi Komai¹, Yukari Imoto¹

¹ (独) 産業技術総合研究所

¹National Institute of Advanced Industrial Science and Technology (AIST)

近年、重金属類や揮発有機塩素化合物等による土壌汚染が顕在化しており、社会的にも土壌汚染の調査・対策等が求められ、急性毒性や汚染物質の簡易検出技術として、発光バクテリアを用いたバイオアッセイが注目されている。しかしながら、発光バクテリアによるバイオアッセイには定量的に評価を行なえる方法として確立したものはなく、科学的な方法と条件設定に基づいた詳細な研究データの蓄積が望まれているのが現状である。土壌汚染対策法では、第二種特定有害物質として重金属類9物質(Cd、Pb、Hg、Se、Cr6+、As、F、B、CN)が指定されている。本報告ではこれら9物質について、発光バクテリアによるバイオアッセイ試験を実施した結果を報告する。

キーワード: バイオアッセイ, 発光バクテリア, 土壌汚染対策法, 第二種特定有害物質, 重金属類

Keywords: bioassay, luminous bacteria, Soil Contamination Countermeasures Act, Class II Specified Chemical Substances, heavy metals

On the experimental study of waves passing over a muddy bottom from a viewpoint of energy

On the experimental study of waves passing over a muddy bottom from a viewpoint of energy

Chi-Min Liu^{1*}, Wen-Yang Hsu², Ray-Yeng Yang², Hwung-Hweng Hwung²

Chi-Min Liu^{1*}, Wen-Yang Hsu², Ray-Yeng Yang², Hwung-Hweng Hwung²

¹Chienkuo Technology University, ²National Cheng Kung University

¹Chienkuo Technology University, ²National Cheng Kung University

Recently the issue of how to protect the coastal region from being damaged by incoming waves has attracted a great deal of attention. One of the wave damping mechanisms is the muddy sea bottom. The mud has been found to be efficient to damping the incoming waves. Herein an series of experiments for surface waves propagating over a muddy bottom is performed to analysis the damping mechanism from a viewpoint of energy. As very few observations and discussions on the energy transfer and dissipation were presented in past studies, the focus of present paper is the transfer and dissipation of wave energy. The wave energy is partly dissipated by the viscosity of muddy bottom which results in the damping of surface waves. At the same time, part of wave energy is transferred to the lower layer which is responsible for the interfacial wave motion. The experimental data show that the energy transferring from surface waves to the mud layer is less than 1% of total wave energy during each wave cycle. In addition, the transferred energy will accumulate with the increasing propagation distance, and finally becomes notable at the far-end side.

キーワード: Fluid-mud interaction, wave damping, energy viewpoint

Keywords: Fluid-mud interaction, wave damping, energy viewpoint

Stepwise Approximation of Hydraulic Tomography Surveys for Field-Scale Heterogeneous Aquifers

Stepwise Approximation of Hydraulic Tomography Surveys for Field-Scale Heterogeneous Aquifers

Yi Ju Huang^{1*}, Chuen-Fa Ni¹

Yi Ju Huang^{1*}, Chuen-Fa Ni¹

¹Graduate Institute of Applied Geology, National Central University, Taiwan

¹Graduate Institute of Applied Geology, National Central University, Taiwan

Hydraulic tomography surveys (HTS) integrate information of direct measurements and pumping test data to estimate spatial distributions of hydraulic conductivity with higher resolution. To conduct HTS requires a series of cross-well hydraulic tests. Practical applications of HTS are expensive because many packers and pressure transducers are usually used to simultaneously obtain multilevel and isolated head observations for numerical inversions. This study aims to develop a stepwise approximation to estimate multilevel hydraulic test data and apply the approach to a field-scale problem in a confined aquifer located at the campus of the Fooyin University in south Taiwan. The hydraulic stepwise test in field would use least set of packers to separate the well into an interval and obtain the multilevel observations by changing different depths of packers in a pumping stress. This study first conducted numerical investigations that a variety of cases including different variations of hydraulic conductivity (K) such as variance value and correlation length in x direction of K. To assess how and to what degrees the accuracy of the proposed stepwise approximation would compare with original HTS for estimations of aquifer parameters in synthetic heterogeneous aquifers. Base on the stepwise approach this study is then applied to hydraulic tests at well field in the Fooyin University. The numerical assessments show that the higher variance of aquifer properties the lower accuracy. The results of numerical experiments indicate that two types of head observations could yield similar estimations of hydraulic properties in magnitude and patterns. Due to limited packers and pressure transducers, the full version of HTS was not conducted at the well field for comparisons. The results based on stepwise observations from three wells in Fooying University show that the inversion of field test data agrees well with the identification of soil material types from borehole loggings. Additionally, the mean value of the estimated hydraulic conductivity closed to the one from depth-averaged two-dimensional HTS and inversions.

キーワード: hydraulic conductivity, hydraulic tomography, inverse model, stepwise approximation

Keywords: hydraulic conductivity, hydraulic tomography, inverse model, stepwise approximation

人工マクロポアが土壌中の有機物量と植物バイオマス量に及ぼす影響 The Effect of Artificial Macropores on the Amount of Organic Matters in Soils and Plant Biomass.

山本哲也², 森 也寸志^{1*}, 末継 淳¹
Tetsuya Yamamoto², Yasushi Mori^{1*}, Atsushi Suetsugu¹

¹ 岡山大学, ² 島根大学
¹ Okayama University, ² Shimane University

Artificial macropores with fibrous material were installed in degraded red yellow soils to enhance vertical infiltration along with organic matter and nutrients. They enhanced vertical infiltration without cultivation which could cause small particle loss from the surface soils. Macropore and no macropore plots were prepared and total carbon in 10, 30, 50 cm depth were measured each half year. Infiltrated soil water was sampled through wick sampler to measure total organic carbon and ion concentration. Results showed that total carbon in macropore plot increased in spring while it decreased in fall, which would be caused by infiltrated soil water. Actually total carbon concentration in soil water was always higher in macropore plot. Nitrate nitrogen concentration was also higher in macropore plot, which was decomposed by biological activity. Resulted vegetation was significantly higher in macropore plot than no macropore plot. This vegetation would be possible organic matter source for future soils. This technique enhanced vertical infiltration, provided organic matter in soils, and restored the vegetation in degraded land.

キーワード: マクロポア, 下方浸透, 炭素貯留
Keywords: Macropore, Infiltration, Carbon sequestration

劣化土壌における植物バイオマス量に人工マクロポア導入が与える影響 Artificial macropore installation effect on plant biomass amount at a degraded land.

森 也寸志^{1*}, 末継 淳¹, 山本哲也²
Yasushi Mori^{1*}, Atsushi Suetsugu¹, Tetsuya Yamamoto²

¹ 岡山大学, ² 島根大学

¹Okayama University, ²Shimane University

At ill-drained lands, heavy rain would cause erosion which enhances degradation process much faster. According to our previous study, artificial macropore successfully enhanced vertical infiltration and increased organic matter contents. However, there was a concern that infiltrated fresh soil water transported nutrient and oxygen at the same time, resulting decomposition of the organic matter. We installed artificial macropores to degraded clayey soils to evaluate how they affected vertical infiltration, organic matter contents and vegetation. Four repetitive plots were prepared for macropore, no macropore, macropore with nutrients and no macropore with nutrients treatment, respectively. Nutrients would be delivered to soil body by macropores, which would stimulate biological activity. After 6 month, results showed that total carbon was slightly larger than no macropore treatment. At the same, it could be said that macropore treatment would not negatively stimulate the decomposition of organic matter. Dry weight of plants was significantly larger in macropore treatment, which would be caused by better infiltration.

キーワード: マクロポア, 下方浸透, 炭素貯留

Keywords: Macropore, Infiltration, Carbon sequestration

自然岩石の間隙構造解析に関する研究 Using Complementary Approaches to Characterizing Pore Structure of Natural Rock

チンホン フ¹, 濱本 昌一郎^{2*}
Qinhong Hu¹, Shoichiro Hamamoto^{2*}

¹ テキサス大学アーリントン校, ² 埼玉大学
¹The University of Texas at Arlington, ²Saitama University

Microscopic characteristics of porous media ? pore shape, pore-size distribution, and pore connectivity ? control fluid flow and chemical transport, and are important in hydrogeological studies of rock formations in the context of energy, environmental, and water resources management. For example, the effect will influence the mass transfer in a fracture-matrix system, such as gas production from tight shale after hydraulic stimulation or long-term performance of geological repository. This presentation discusses various approaches to investigating pore structure of a range of rocks. These approaches include imbibition, tracer gas/liquid diffusion, porosimetry (mercury injection porosimetry, water vapor transport and capillary condensation), and imaging micro-tomography, Woods metal impregnation). Consistently across approaches, we found well-connected pores for Berea sandstone, intermediately-connected pores in welded tuff and dolomite, and a sparsely-connected pore system for Indiana sandstone, metagraywacke, and Barnett shale.

キーワード: 岩, 間隙構造, 物質輸送
Keywords: rock, pore structure, mass transfer

Numerical simulation of CO₂ natural convection in heterogeneous porous formations Numerical simulation of CO₂ natural convection in heterogeneous porous formations

Chi-Ping Lin^{1*}, Chuen- Fa Ni¹

Chi-Ping Lin^{1*}, Chuen- Fa Ni¹

¹National Central University. Graduate Institute of Applied Geology

¹National Central University. Graduate Institute of Applied Geology

Geologic storage of carbon dioxide (CO₂) could be a solution to the problem of global climate change. Geologic sequestration of CO₂ is the direct injection of carbon dioxide in the compatible deep saline aquifers for long term storage. Before site scale investigations are conducted, numerical simulations play important roles to evaluate the capability of geologic disposal of CO₂. This study employed TOUGHREACT simulator with an equation of state package, called ECO2N, to simulate the migration of dissolved CO₂ plume in heterogeneous saline formations. The ECO2N module is calculated to handle two-phase (liquid, gas), three-component (water, salt and CO₂) system in the pressure- temperature regime above the critical point of CO₂. The density of dissolved supercritical CO₂ is larger than that of saline water and will lead to the migration of liquid phase CO₂ downward due to the gravitation-driven force. On the early stage of a CO₂ injection, the speed of natural convection is typically faster than diffusion of CO₂ molecules so that the convection may control the liquid CO₂ migration and then enhance the dissolution rate. This work presents a preliminary study for modeling the natural convection of CO₂ sequestration in heterogeneous saline formation in a finite two-dimensional domain. The objective of this study is to evaluate the effect of different degrees of geologic variability on the natural convection. With a minor modification of TOUGHREACT model, we can incorporate the random field generator with ECO2N module and evaluate the uncertainty influenced by the formation variability. The simulation results show that during the simulation time period, due to the heterogeneity, the liquid CO₂ was more easily pass through highly permeable region, but to be up in lower permeable region which have more carbon dioxide dissolution in this part. The convection in the heterogeneous case is sooner than in a homogeneous case with the same effective permeability for dissolved CO₂. The dissolution rate of carbon dioxide in heterogeneous media was larger and sooner than in homogeneous media, and the structure of permeability filed has different way to strongly dominate the convective effect for low, moderate and large heterogeneity, respectively. To understand the natural convection behavior of carbon dioxide, the effect of permeability is the leading condition to familiar with it.

キーワード: geologic storage, carbon dioxide, CO₂, heterogeneity, natural convection

Keywords: geologic storage, carbon dioxide, CO₂, heterogeneity, natural convection

LAT-PIV 法による多孔質媒体の間隙流速測定と CTRW パラメータの関係性 Estimation of the parameters of CTRW model by means of LAT-PIV pore-velocity measurement

新屋 樹^{1*}, 田嶋 脩平¹, 羽田野 祐子¹
Itsuki Araya^{1*}, Shuhei Tajima¹, Yuko Hatano¹

¹ 筑波大学大学院システム情報工学研究科

¹ Graduate School of Systems and Information Engineering, University of Tsukuba

Recently, the CTRW (Continuous-Time Random Walk) model has been acknowledged that it can reproduce the behavior of substances in the groundwater. This model can describe the anomalous diffusion and includes the ADE (Advection-Dispersion Equation) as a special case. However, in the CTRW model, it is one of the most difficult problems that the parameters in the model cannot be fixed a priori.

In the present study, we propose a method that can estimate the most crucial parameter, alpha, in the CTRW model with the aid of LAT-PIV (Laser-Aided Tomography and Particle-Image Velocimetry) method.

With the LAT-PIV method, we can visualize the internal structure of porous media, and tracks down tracers in the pore fluids. We packed the glass beads of diameter 2 mm ~ 5 mm into a rectangular acrylic-resin container (400 mm x 100 mm x 100 mm) and filled the container with silicone oil, tracer particles dispersed.

Silicone oil is discharged in the box with a peristaltic pump with a specific flow rate.

Laser-sheet light is projected in the box from the side, parallel to the front face of the container in order to glow the tracers.

With a CCD camera, we obtain successive images of the tracers. Then a histogram of velocities is generated.

We repeat the same procedure for another porous medium, consisted of sphere particles of 7 mm in diameter.

We improved the PIV procedure in two ways. One is that we re-edited the images in order to make glass particles invisible.

Secondly, we revised the computer program of the velocimetry part. These revisions are in order to eliminate unwanted effects due to the existence of solid particles. After these revisions, we confirmed that the mean flow velocity, estimated by the pump rate, actually agrees very well with that obtained by the PIV velocimetry.

To estimate the model parameter of CTRW, we have to convert the pore-velocity histograms into the waiting-time distribution. The waiting-time distribution is the essential element of the CTRW model, so this is important.

We converted them in the following method.

First, after a study by Borgne et al. (2011), we conducted a Monte Carlo simulations; we choose values of the pore velocity randomly within the range of measurement. Then we sum up these values until the total displacement reaches at the pore length. The numbers summed up can be regarded as the waiting time. We repeat this 1,000,000 times and obtained the distribution of the waiting time.

Second, we estimate the value of parameter alpha. We make a log-log plot of the waiting-time distribution and the slope of the graph corresponds to the value of alpha.

As a result, we found that the waiting-time distribution follows the power law that is assumed in the CTRW model.

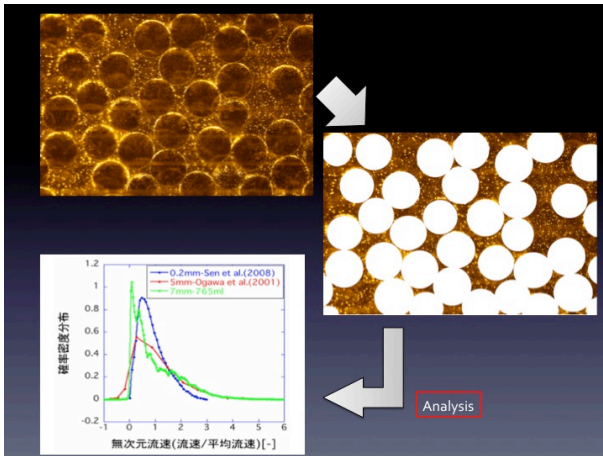
We obtained values of alpha of the model, which are in the range of 1.6 ~ 2.4. We also found that the anomaly of the diffusion is stronger in a medium packed with irregular particles than a sphere-packed medium.

キーワード: 土壌汚染, 異常拡散, 連続時間ランダムウォーク, 不均質, 粒子画像流速測定法, 多孔質媒体
Keywords: soil pollution, anomalous transport, continuous time random walk, heterogeneity, PIV, porous medium

AGE04-P08

会場:コンベンションホール

時間:5月20日 18:15-19:30



Impact of landfill leachate from municipal solid waste dumpsites on environmental pollution

Impact of landfill leachate from municipal solid waste dumpsites on environmental pollution

Nadeeka Sewwandi Badababde Gamage^{1*}, Koide Takahiro², Ken Kawamoto¹, Shoichiro Hamamoto¹, Shingo Asamoto¹, Hiroyasu Sato³

Nadeeka Sewwandi Badababde Gamage^{1*}, Koide Takahiro², Ken Kawamoto¹, Shoichiro Hamamoto¹, Shingo Asamoto¹, Hiroyasu Sato³

¹Graduate School of Science and Engineering, Saitama University, ²Institute of Environmental science and Technology, Saitama University, ³Graduate School of Frontier Sciences, University of Tokyo

¹Graduate School of Science and Engineering, Saitama University, ²Institute of Environmental science and Technology, Saitama University, ³Graduate School of Frontier Sciences, University of Tokyo

Landfill leachate contains different types of pollutants, organic, inorganic pollutants and heavy metals. A research was conducted to study the impact of landfill leachate on environment from municipal solid waste dumpsites in Sri Lanka. The objective of the study was to study the impact of landfill leachate on environmental pollution by quantifying different pollutant concentrations. Leachate samples were collected from five landfills from different areas of Sri Lanka. Collected samples were analyzed for pH, EC, DO, TDS, Cl⁻, BOD₅, COD, TN, TP and heavy metals. Concentration of pollutants in landfill leachate was compared with the standards level of pollutants to be discharged into inland surface waters. Further, BOD₅/COD ratio for organic pollutants and quality rating scale (QRS) values for heavy metals were used. Results show that all the leachate has a very low DO concentration. Leachate from Kolonnawa and Rathnapura show an acidic pH and pH of the other sites are basic. The ratio of BOD₅/COD is highest, 0.6 from Kolonnawa leachate followed by Rathnapura leachate (0.27). Quality rating scale values of all the samples exceed the 100% except for the Cr concentration in Hambantota leachate sample. Chromium concentration in leachate from Hambantota sample was 80%. From the results of the study, it can be concluded that the soil and water nearby the open dumpsites are prone to be polluted by heavy metals present in the leachate. Further, the inorganic and organic pollutants can cause environmental imbalance in receiving bodies.

キーワード: heavy metals, quality rating scale, pollution, BOD₅/COD

Keywords: heavy metals, quality rating scale, pollution, BOD₅/COD

Application of Coconut Fiber Biofilm Treatment System to Wastewater Treatment: Development of Synthetic Leachate

Application of Coconut Fiber Biofilm Treatment System to Wastewater Treatment: Development of Synthetic Leachate

Nirmala Kumuduni Dharmarathne^{1*}, Ken Kawamoto¹, Koide Takahiro², Naofumi Sato¹, Hiroyasu Sato⁴, Shoichiro Hamamoto¹
Nirmala Kumuduni Dharmarathne^{1*}, Ken Kawamoto¹, Koide Takahiro², Naofumi Sato¹, Hiroyasu Sato⁴, Shoichiro Hamamoto¹

¹Graduate School of Science and Engineering, Saitama University, Japan, ²Institute of Environmental science and Technology, Saitama University, Japan, ³Kokusai Kogyo Co., Ltd, ⁴Graduate School of Frontier Sciences, University of Tokyo, Japan
¹Graduate School of Science and Engineering, Saitama University, Japan, ²Institute of Environmental science and Technology, Saitama University, Japan, ³Kokusai Kogyo Co., Ltd, ⁴Graduate School of Frontier Sciences, University of Tokyo, Japan

One of the main causes of water pollution is the leachate from waste disposal sites with an improper operation. The objective of this study is to assess the utilization of local-available biomass resources for wastewater treatment and to study the adaptability of the developed wastewater treatment system for the present circumstances in Sri Lanka. The experiment container is designed as 0.012m³ in volume. Pile of strings of coconut fibers from Sri Lanka will be used as a biofilm agent. Experiment will be carried out synthetic leachate at a rate of 0.057m³/day (0.012m³/7days) with one-week retention time and 0.029m³/day (0.006 m³ /14day) with two-week retention time with different fiber density. Using synthetic leachate, provides a relatively constant influent source concentration of leachate constituents to the microcosm system. The two type of synthetic leachate was prepared to meet the following objectives: 1) to be more representative of real leachate in Sri Lanka, 2) the medium should be stable during the operation of experiment (2 week), 3) low BOD/COD ratio. Prepared Synthetic leachates were tested for biodegradability. Variation of Dissolved oxygen (DO), pH, and ORP (Oxidation Reduction Potential) profiles are almost constant with time. Chemical oxygen demand (COD) of leachate 1 is 2.09x10⁴ mg/l and leachate 2 is 1.92x10⁴ mg/l. In the case of leachate 1 and leachate 2, COD values were not significantly change up to 21 days and 34 days respectively. After that, COD value is significantly changed. It could be assumed that hardly degradable complexes may be formed with increasing time. In order to measure BOD values in a synthetic leachate 0.01g of landfill capping soil was added, as a seeding material. BOD value of both type of leachate is decreases as the time increases. This indicated that microorganism would depredate readily degradable organic and inorganic compounds. Total Organic Carbon (TOC), Inorganic Carbon (IC) and TC (Total carbon) values are almost constant with time. BOD/COD ratio is decreases with the time. It could be assumed that the biodegradability of leachate is decreases with time.

キーワード: Synthetic Leachate, Biodegradability, Coir Fiber, Wastewater Treatment

Keywords: Synthetic Leachate, Biodegradability, Coir Fiber, Wastewater Treatment

Determining Diffusive Properties of Acetate and Dissolved Hydrogen in Soils Determining Diffusive Properties of Acetate and Dissolved Hydrogen in Soils

吉川 美穂^{1*}, 竹内 美緒², 張 銘², 駒井 武²

Miho Yoshikawa^{1*}, Mio Takeuchi², Ming Zhang², Takeshi Komai²

¹ケミカルグラウト株式会社, ²産業技術総合研究所

¹Chemical Grouting Co., LTD, ²AIST

Remediating polluted groundwater and soil is one of the essential environmental issues in industrialized countries. More than 100,000 sites polluted by Volatile Organic Compounds (VOCs) such as tetrachloroethene (PCE), trichloroethene (TCE) and their intermediate decomposition products like cis-dichloroethene (cis-DCE) are potentially existing throughout Japan. These pollutants are biologically decomposable, and bioremediation is considered as a practically applicable, low cost remediation technology. A special type of microbes, specifically *Dehalococcoides* having the ability to completely decompose PCE and TCE to ethylene, has been used to remediate polluted sites. For stimulating the activity and decomposability of the microbes, an organic matter slowly releasing hydrogen is frequently injected into the sites. Dissolved hydrogen and acetate released from the organic matter are considered to be an electron donor and carbon source for *Dehalococcoides*, respectively. For an effective remediation, especially when remediating an aquitard, delivery of hydrogen and acetate to microbes is required.

To evaluate the transport properties of acetate in soils, diffusion tests on clay soils were performed. In-diffusion test was applied to analyze effective diffusion coefficient of acetate, and a commercially-available kaolin clay was used for preparing the test specimens. The results were discussed and compared with the data previously tested for the dissolved hydrogen by the authors. The diffusivity of acetate is lower compared to that of dissolved hydrogen having smallest molecular size, and a technique to accelerate the delivery of organic matter in aquitards is necessary when performing an in situ remediation.

Keywords: VOCs, Bioremediation, diffusion test, acetate, dissolved hydrogen

耕起体系による土壌物理性の違いが火山灰農地土壌からのCO₂フラックスに及ぼす影響
Carbon dioxide flux from Andisol in relation to soil physical properties as affected by tillage systems

郭琳琳^{1*}, 西村拓¹, 宮崎毅¹, 井本博美¹
Linlin Guo^{1*}, Taku Nishimura¹, Tsuyoshi Miyazaki¹, Hiromi Imoto¹

¹ 東京大学、農学生命科学研究科、生物環境工学専攻

¹ Graduate School of Agricultural and Life Sciences, University of Tokyo

Annual CO₂ emission has grown between 1970 and 2004 by about 80%. Pedologic carbon pool is one of the major pools to store a large amount of carbon. Carbon cycle in agricultural ecosystem is one of the resources to emit CO₂ from soil to the atmosphere. Since negative environmental impacts of global warming were realized, carbon sequestration by agricultural managements became hot topics recently. Tillage operation changes soil structure and thus soil physical properties, which may affect production and transport of CO₂. The relationship between soil physical porosities and carbon dynamics was so complex and the studies focused on Andisol were not enough.

In this study we measured soil physical properties of Andisol under no tillage and tillage treatments. We also measured soil CO₂ flux from Andisol under no tillage and tillage treatments by a 150-days incubation experiment using soil columns of 15 cm in diameter.

The results show that, compared with no tillage, tillage significantly reduced soil dry bulk density, and destructed soil aggregates, especially macroaggregates. Relationship between soil air filled porosity and gas diffusivity was well described by a soil-water-characteristic based model for the two treatments. Soil air filled porosity and gas diffusivity under no tillage treatment was higher than that of tillage treatment in tilled layer. Changes in these physical properties following tillage practice were considered as key factors of soil carbon dynamics. Soil CO₂ flux under tillage treatment was higher than that under no tillage treatment. No tillage may contribute to less carbon decomposition and CO₂ emission in soil.

キーワード: 二酸化炭素フラックス, 耕起体系, 土壌物理性, 火山灰土壌

Keywords: carbon dioxide flux, tillage systems, soil physical properties, Andisol

Fukushima-derived radiocesium in coniferous forest floor Fukushima-derived radiocesium in coniferous forest floor

Teramage Mengistu^{1*}, Yuichi Onda¹

Teramage Mengistu^{1*}, Yuichi Onda¹

¹University of Tsukuba

¹University of Tsukuba

We are investigating the time-dependent evolution of Fukushima-derived radiocesium in coniferous forest floor in Tochigi prefecture at Karasawa yama. In our study, we classified the forest floor in to three major components: undergrowth vegetation (UG), litter layer (Ol) and fermented layer (Of). The samples are carefully separated and collected inside a rectangular frame (30 *15 cm) at a stable site in Japanese cypress forest at different season of a year. Radiocesium activities in the soil and litter samples were determined by gamma ray spectrometry. Results revealed that highest fluctuation of radiocesium content were observed in the UG components. Relatively, a slight variation was observed in Ol-layers but showed a general decrease whereas Of-horizon demonstrated a steady increase over time. The swinging of radiocesium content in UG components can be explained by the difference in the dynamic and the growth stage of the herbaceous plants in response to climatic-derived seasonal changes that creates an interface of active exchange. The slight fluctuation and a general decrease in Ol-layer can be partly due to microbial and mechanical decomposition of the litter components and partly due to less contaminated litters tends to fall from canopy in the later period of time. Hence, Ol-layer tends to temporary store radiocesium and feeds Of-horizon in the course of the process. The steady increasing of radiocesium in Of-layer indicates that radiocesium leaves this layer at very slow rate which implying radiocesium tends to stay longer and could be bioavailable to plant roots exploring the horizon. Such kind of study helps to understand the dynamic of radiocesium and assist to design a precaution measures to reduce the risk associated to radiation exposure.

キーワード: Radiocesium, Undergrowth, Ol-layer, Of-layer

Keywords: Radiocesium, Undergrowth, Ol-layer, Of-layer

改良 LEACHM モデルを用いた異なる肥培管理条件下における窒素の溶脱予測 Predicting nitrate leaching from cropped soils under different fertilization treatments using the modified LEACHM model

朝田 景^{1*}, 江口定夫¹, 恒川歩², 辻正樹²

Kei Asada^{1*}, Sadao Eguchi¹, Ayumi Tsunekawa², Masaki Tsuji²

¹ 独立行政法人 農業環境技術研究所, ² 愛知県農業総合試験場

¹National Institute for Agro-Environmental Sciences, ²Aichi Agricultural Research Center

Nitrogen (N) management strategies for reducing the ground water contamination around agricultural fields require precise prediction of N leaching using a process-based model. We modified LEACHM model for use in Andosols, which are characterized by slow soil organic carbon mineralization and nitrate adsorption. The modified model was able to improve the prediction of N leaching loss from Andosol with relative improvements 63.5% over the original model. In this study, further validation of the modified model was carried out using field data from a long-term N leaching experiment conducted on sandy-loam soil amended with N chemical fertilizer, cattle and swine manure. The modified model provided relatively accurate predictions of the measured N loss below the crop root zone as well as the measured inorganic N content in surface soils under different fertilization treatments.

残留ガス存在下の間隙中の水膜厚さの評価

Estimation of water film thickness in pores under the presence of trapped gas

西山 直毅^{1*}, 横山 正¹

Naoki Nishiyama^{1*}, Tadashi Yokoyama¹

¹ 大阪大学大学院理学研究科宇宙地球科学専攻

¹Department of Earth and Space Science, Osaka University

When water infiltrates into a dry or partially saturated geological medium, the capillary trapping of gas as discontinuous clusters occurs. The trapped (residual) gas is known to influence the hydraulic conductivity of geological media (e.g., Nishiyama *et al.*, 2012, *Water Resour. Res.*), and is considered as an effective mechanism in the storage of carbon dioxide in aquifers. Previous experimental observation using a sand column has implied the presence of wetting film between trapped non-wetting phase and grain surfaces (Conrad *et al.*, 1992, *Water Resour. Res.*). Other study has shown that the dissolution and precipitation of minerals occur as long as a water film of a thickness of a few nanometers covers mineral surfaces (Stipp *et al.*, 1996, *Am. Mineral.*). It is inferred from these results that to consider the presence of water film on pore walls is essential for quantifying the dissolution and precipitation and the mass transport in geological media under the occurrence of gas trapping. Because the rate of mass transport is expected to be affected by the thickness of water film, the estimation of film thickness is important. Thus, we constructed a theoretical model predicting the thickness of water film under the condition that gas is trapped in pores.

The water film on a mineral surface is subject to van der Waals and electric double layer forces perpendicular to the plane of the film. The relationship between the film thickness and the pressure (disjoining pressure) associated with the forces acting in the film can be described on the basis of Derjaguin-Landau-Verwey-Overbeek theory. Because the disjoining pressure can be converted to relative humidity in the surrounding gas, we first obtained the relationship between film thickness and relative humidity. When we consider the pore space where gas is confined by pore water, the relationship between relative humidity and pore diameter can be determined on the basis of the Kelvin equation. Combining these relationships, we finally obtained the expression describing the film thickness-pore diameter relation. The expression shows that the water film thickness changes depending on the pore diameter, mineral type, electric potential at the water-gas and water-mineral interfaces, and pore solution composition. Especially for the system in which the ion concentration in pore solution is low ($<10^{-4}$ M) and the mineral has a high electric potential (e.g., quartz in contact with dilute pore solution), pore diameter is the most important factor controlling the water film thickness. In this case, the thicker film exists in pores having larger diameter. The broader the pore size distribution of a given geological medium, the broader the range of the film thickness. The expression presented in this study will be useful in modeling the reaction and mass transport in the water film in geological media under the occurrence of gas trapping.

キーワード: 水膜, 残留ガス, 分離圧

Keywords: water film, capillary trapping, residual gas, disjoining pressure

Determination of the Tangential Model Parameters for different soil types using the Un-saturated Soil Database (UNSODA).

Determination of the Tangential Model Parameters for different soil types using the Un-saturated Soil Database (UNSODA).

Magatt Thiam^{1*}, Anzu Shigeoka², Hirotaka Saito³, Yuji Kohgo⁴
Magatt Thiam^{1*}, Anzu Shigeoka², Hirotaka Saito³, Yuji Kohgo⁴

¹PhD Student, United Graduate School of Agriculture, Tokyo University of Agriculture and Technology, ²Undergraduate Student, Tokyo University of Agriculture and Technology, ³Department of Ecoregion Science, Tokyo University of Agriculture and Technology, ⁴Professor, Graduate School of Agriculture, Tokyo University of Agriculture and Technology

¹PhD Student, United Graduate School of Agriculture, Tokyo University of Agriculture and Technology, ²Undergraduate Student, Tokyo University of Agriculture and Technology, ³Department of Ecoregion Science, Tokyo University of Agriculture and Technology, ⁴Professor, Graduate School of Agriculture, Tokyo University of Agriculture and Technology

The use of Tangential Model proposed by Kohgo (1995) in Soil Water Retention Curves (SWRCs) fitting requires to know some parameters related to: (i) the soil air entry value, (ii) its maximum specific moisture capacity, (iii) its critical suction and degree of saturation; and (iv) the slopes of the curve. In this study, an attempt is made to determine these parameters for different soil types. For that, the Unsaturated Soil Hydraulic Database, UNSODA, is used as a data source. Two methods were used to fit SWRCs data, from UNSODA, to Tangential Model. SWRCs data chosen in this study, from UNSODA, were those of sand, clay, silty clay, and sandy loam.

First approach is that of M. Brown (2000) which uses SOLVER, a built-in Microsoft Excel function, with Tangential Model equation as a user defined function. For this method, good accuracy was not always guaranteed and the smoothness of curves at lower and higher suction ranges remained difficult to satisfy. However it does permit a fast and approximate fitting. It was noticed that parameters obtained by this method depend highly on the initial input values (initial parameter input).

Determining the parameters graphically on the curves obtained from the experimental results was the method that gave the best fit with Tangential Model. Results showed a relative good agreement between experimental data points and fitted curve in the case of sand (same bulk density), silty clay and clay (close bulk density value); while they remained less accurate in the case of sandy loam. From the obtained results, the parameters determined for the different sands were very close. However, in the case of clays and silty clays, some differences were observed especially for the lower and higher suction ranges. The results put in perspective possible correlation between Tangential Model Parameters and/or the bulk density which is to be investigated further.

キーワード: soil water retention curves, degree of saturation, suction, fitting, UNSODA, parametric model

Keywords: soil water retention curves, degree of saturation, suction, fitting, UNSODA, parametric model

Characterization of Compaction and Gas Transport Properties for Solid Waste Samples Characterization of Compaction and Gas Transport Properties for Solid Waste Samples

Damith Nandika Hiniduma Liyanage¹, Ken Kawamoto^{1*}, Shoichiro Hamamoto¹, Takahiro Koide², Kazuto Endo³
Damith Nandika Hiniduma Liyanage¹, Ken Kawamoto^{1*}, Shoichiro Hamamoto¹, Takahiro Koide², Kazuto Endo³

¹Graduate School of Science and Engineering, Saitama University, Japan, ²Institute for Environmental Science and Technology, Saitama University, Japan, ³Center for Material Cycles and Waste Management Research, NIES, Japan

¹Graduate School of Science and Engineering, Saitama University, Japan, ²Institute for Environmental Science and Technology, Saitama University, Japan, ³Center for Material Cycles and Waste Management Research, NIES, Japan

Compaction of waste at a landfill is the main factor that controls short-term density, hence, landfill space requirement. Conversely, it can lead to deteriorate the gas transport and hydraulic characteristics of waste due to change of pore structure and eventually, resulting on long time required for stabilization. The change of Initial moisture content of waste may control its dry density during compaction similar to soil. Hence, in this study, compaction characteristics of different waste materials were studied. Then, effect of different compaction level owing to alteration of initial water content during compaction on gas transport and hydraulic properties such as gas diffusivity (D_p/D_0), air permeability (k_a), and saturated hydraulic conductivity (k_s) were studied. The result suggested that compaction characteristics of landfill waste fully mixed with soil is similar to soil and the variations of hydraulic conductivity of waste materials are similar to granular material. However, landfill waste exhibits higher water blockage effect and tortuous pore network compared to soil giving less gas transport parameters.

キーワード: Compaction characteristics, Gas diffusivity, Air permeability, Saturated hydraulic conductivity

Keywords: Compaction characteristics, Gas diffusivity, Air permeability, Saturated hydraulic conductivity

砂および団粒土の熱特性：粒径・粒子形状・土壌構造の影響

Thermal Properties of Sands and Aggregated Volcanic Ash Soils: Effects of Particle Size and Shape, and Soil Structure

鴨志田 剛久¹, 濱本 昌一郎^{1*}, 川本 健¹, 榊 利博², 小松 登志子¹

Takahisa Kamoshida¹, Shoichiro Hamamoto^{1*}, Kawamoto Ken¹, Sakaki Toshihiro², Komatsu Toshiko¹

¹ 埼玉大学大学院理工学研究科, ² 国立放射性廃棄物協同機構

¹Saitama University, ²National Cooperative for the Disposal of Radioactive Waste, Switzerland

Thermal properties including thermal conductivity and heat capacity are very important for understanding heat transport processes in landfill site cover soil to control the microbial processes in the cover soil.

Previous studies have shown effects of soil conditions such as moisture content and degree of compaction on the thermal properties for differently-textured soils. However, there are few studies on the relations between the thermal properties and micro-scale soil information such as particle size and shape although the size and shape of soil particles highly affect soil packing configuration. In addition, it is not fully understood that soil structure (i.e., aggregate structure) affects behaviors of thermal properties.

In this study, non-aggregated (sandy) and aggregated soils with different size fractions at variably-saturated conditions were used for measuring thermal properties. Micro-scale characterizations of soil-pore structure and soil particle configuration using a X-ray CT device were also performed for sandy soils. For sandy soils, the relation between measured thermal properties and mineral composition (i.e., quartz content), roundness/sphericity of soil particles, and particle size, and solid-phase tortuosity based on X-ray CT images, were investigated. For aggregated soils, the measured thermal conductivities at variably-saturated conditions were discussed based on the water retention characteristics and pore-size distribution in inter- and intra-aggregate pore regions.

砂質土の土壌水分ヒステリシスがガス・熱輸送係数に及ぼす影響 Effect of Hysteresis in the Soil-Water Retention on Gas and Heat Transport Parameters for Sandy Soils

笹沼 公美¹, 濱本 昌一郎^{1*}, 川本 健¹, 榊 利博², 小松 登志子¹

Sasanuma Kumi¹, Shoichiro Hamamoto^{1*}, Kawamoto Ken¹, Sakaki Toshihiro², Komatsu Toshiko¹

¹ 埼玉大学大学院理工学研究科, ² 国立放射性廃棄物協同機構

¹Saitama University, ²National Cooperative for the Disposal of Radioactive Waste, Switzerland

Gas and heat transport parameters such as soil-gas diffusion coefficient (D_p), air permeability (k_a), and thermal conductivity (k_T) are governing parameters for gas and heat transport behaviors in soils. Degree of water-saturation at different water potentials highly affects these gas and heat transport parameters. In this study, the effects of drying and wetting processes in the capillary water zone (water matric potential ranging from 0 to ? 100 cm H₂O) on the D_p , k_a , and k_T were investigated using different sand size fractions at different particle shapes. Degree of soil compaction (i.e., bulk density) on water retention hysteresis, hereunder gas and heat transport parameters was also investigated. Based on the measured data, threshold air-filled porosities for D_p and k_a , air-filled pore-tortuosity, and effective pore diameter for gas transport under drying and wetting processes, and their relations with particles shape, particle size, and compaction levels were discussed.

Modified TR model for soil water repellency characteristics curves for volcanic ash soils in Japan and New Zealand

Modified TR model for soil water repellency characteristics curves for volcanic ash soils in Japan and New Zealand

黒田 卓也^{1*}, Subedi Shaphal¹, 川本 健², Mueller Karin³, B.E. Clothier⁴, 平舘 俊太郎⁵, 濱本 昌一郎², 小松 登志子²
Takuya Kuroda^{1*}, Shaphal Subedi¹, Ken Kawamoto², Karin Mueller³, B.E. Clothier⁴, Syuntaro Hiradate⁵, Shoichiro Hamamoto²,
Toshiko Komatsu²

¹Graduate School of Science and Engineering, Saitama University, ²Institute for Environmental Science and Technology, ³Plant & Food Research Institute, Ruakura Research Centre, ⁴Plant & Food Research Institute, Private Bag 11600, Palmerston North, ⁵Biodiversity Division, National Institute for Agro-Environmental Sciences (NIAES)

¹Graduate School of Science and Engineering, Saitama University, ²Institute for Environmental Science and Technology, ³Plant & Food Research Institute, Ruakura Research Centre, ⁴Plant & Food Research Institute, Private Bag 11600, Palmerston North, ⁵Biodiversity Division, National Institute for Agro-Environmental Sciences (NIAES)

Water repellency (WR) of soil can induce significant hydrological problems such as reduced water infiltration, enhanced surface runoff and erosion and the forming of preferential flow patterns in soils. Although WR has been reported in many countries including Japan and New Zealand, WR characteristics and its dependence of soil water content and soil organic carbon content (SOC) for volcanic ash soils are not fully understood. In this study, soil water repellency characteristics curves (SWRCCs; degree of WR as a function of soil water content or soil water potential) for volcanic ash soils with different SOC taken from several locations in Japan and New Zealand were determined by using various WR tests. WR parameters in the SWRCCs were correlated to either SOC per unit weight (kg kg⁻¹) or SOC per unit specific surface area (kg m⁻²). Besides, a predictive model for SWRCCs, Two-Regional Water Repellency (TRWR) model (Karunaratne et al., Vadose Zone J., 2010), was modified based on the newly obtained correlations between model parameters and SOC per unit specific surface area. The modified TRWR model performed better than the original model and well predicted the measured SWRCCs for volcanic ash soils.

Keywords: water repellency, volcanic ash soil, Two region model