

Morphological analysis of debris flow deposits in steep headwater channel using multi-temporal terrestrial laser scanning: a 4-year case study at Ohya-kuzure Landslide, central Japan

Morphological analysis of debris flow deposits in steep headwater channel using multi-temporal terrestrial laser scanning: a 4-year case study at Ohya-kuzure Landslide, central Japan

*早川 裕弼¹、今泉 文寿²、堀田 紀文³、經隆 悠³

*Yuichi S. Hayakawa¹, Fumitoshi Imaizumi², Norifumi Hotta³, Haruka Tsunetaka³

1.東京大学空間情報科学研究センター、2.静岡大学農学部、3.筑波大学生命環境科学研究科

1.Center for Spatial Information Science, The University of Tokyo, 2.Faculty of Agriculture, Shizuoka University, 3.Graduate School of Life and Environmental Sciences, University of Tsukuba

Since the formation of the Ohya-kuzure landslide in 1707, its steep, rugged terrain has continued production of a vast amount of sediments by frequent debris flows. Recent works of erosion controls have resulted in vegetation recovery in many slopes in the landslide terrain, but in some subcatchments with very steep slopes, slope deformation and sediment transportation by debris flows are still frequently observed. The Ichinosawa subcatchment shows the highest frequency of debris flows in the recent decade. We focus on this subcatchment, in which numerous debris flows occur by several causes favorable for the initiation, including heavy rainfalls, steep channel slopes and frequent recharge of sediments from steep landforms with deformed sedimentary rocks. In this study site, detailed monitoring and related topographic measurements have previously been performed, yet the details of geomorphic processes are still in progress to be further investigated.

Here we perform terrestrial laser scanning of channel bed sediments in the Ichinosawa subwatershed to examine volumetric and morphological changes in the sediments. The TLS data were collected for 3 seasons each year since November 2011, hence comprising 12 datasets. Every point cloud data for different time is georeferenced using GNSS-derived ground control points, while if applicable, alignments of point clouds for adjacent time are further refined by cloud-based registration using the inertial closest point algorithm for unchanged slope characteristics. While the point cloud analysis shows a high potential of morphological measures in the study reach, we also carry out a DEM-based analysis at a resolution of 0.1 m for the basic volumetric and morphometric measurements. Estimated annual sediment storage and yield in the study reach falls into the order of thousands of cubic meters, which corresponds well with the measurements by other approaches. Longitudinal and transverse profile analyses demonstrate the segmentation of the study reach bounded by the narrowing of valley width with bedrock exposures (knickpoint) on the valley floor. Topographic metrics including stream gradient, surface roughness and openness are also examined to show distinctive characteristics of sediment transportation induced by debris flows along the study reach. This study is supported by JSPS KAKENHI Grants (26292077 and 25702014).

キーワード：土石流、地上レーザ測量、点群、デジタル標高モデル、地形計測

Keywords: debris flow, TLS, point cloud, DEM, geomorphometry

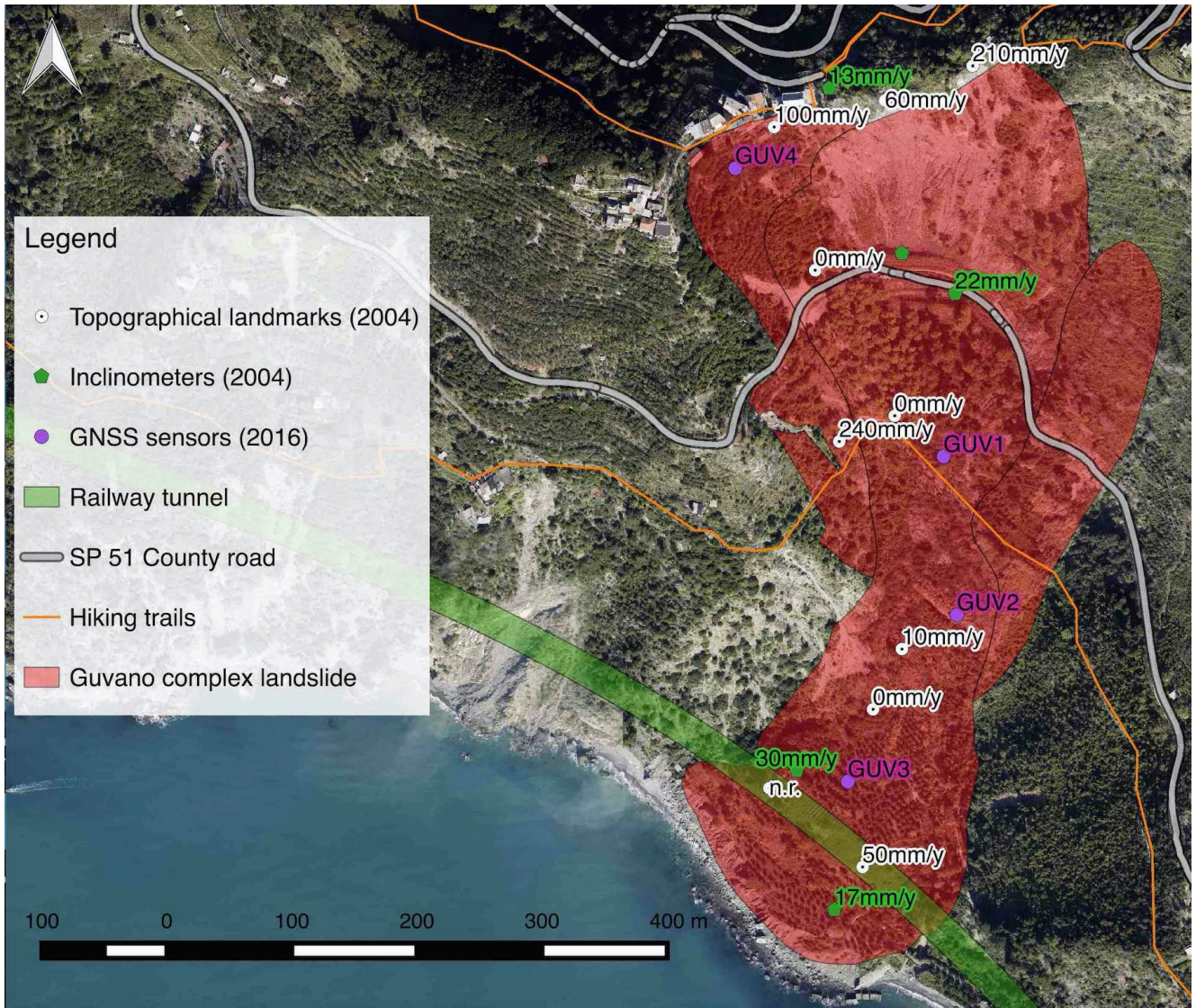
Single-frequency GNSS monitoring of the Guvano coastal landslide (Vernazza, Italy)

*Emanuele Raso¹, Ivano Rellini¹, Stefano Caldera², Eugenio Realini²

1.Universita degli Studi di Genova, 2.Geomatics Research and Development (GReD) srl

The use of Global Navigation Satellite Systems (GNSS) has become a popular technique in landslide monitoring in recent years: application of low-cost GNSS sensor technology (simple L1 receivers) has remarkably improved during the last few years and has considerably reduced the cost of GNSS sensors; the deformation monitoring with GNSS measurements is a well-known method which can be employed for both extended and local phenomena such as landslides, where a high level of accuracy is needed. The Guvano coastal landslide is a complex slow gravitational phenomenon located between the hamlets of Vernazza and Corniglia; it shows an extension of approximately 0.15 km², a maximum length of 650 m measured across the upper portion and a width ranging between 120 m and 400 m at slope toe. From a kinematic point of view, the landslide evolution is characterized by a rock planar slide occurred in 1853 and whose fracture surface was set up of a translational fault plane between shales and argillites (Argille e Calcari di Canetolo Formation) and sandstones (Macigno Formation); at present time, three main sectors are identified: the upper one, characterized by rockfalls and topples along an active scarp, the medium one (medium to high slope angle, characterized by soil slips and earth flows) and the lower one (low slope angle, earth flow reaching the coastline). Collapses related to the right flank usually start as rockfall and then evolve in rock avalanches. An original engineering geomorphological map has been realized: actually a retrogressive failure, consequence of several crown collapses, is well visible and could represent a risk for the village of San Bernardino, located just above the main scarp, and for the safety of cars and pedestrian along a portion of the SP51 County Road. The erosion of the landslide toe by the sea waves action and subsequent offshore transportation of sediments has determined a dangerous condition in terms of remobilization of the landslide mass. Between 2003 and 2004 a geotechnical investigation (soil borings and installation of inclinometers and piezometers) was performed in order to examine the soil and rock stratigraphy of the area and to obtain information about the displacement of the landslide mass, which has alternated active phases with dormant periods: the sliding surface was identified at a depth of 11 meters. The main objective of this work is to detect displacements of the order of a few millimeters by relative positioning of low-cost receivers over a short baseline (about 2-3 km): the monitoring program has started in October 2015 when four GNSS sensors (GeoGuard Monitoring Units - GMU) were positioned along the landslide body. The GMUs include low-cost single-frequency hardware for both receiver and antenna. The receiver module is a u-blox LEA-6T, providing GPS observations which are transferred by mobile connection to the control center (GeoGuard Cloud) and processed by a customized version of the free and open source software goGPS. Single-shot displacement data and trend analyses are then processed and managed by the GeoGuard Cloud, which send it to the end-user service interface. The first results assess the activity of the landslide through the relative displacement detected between two of the deployed GMUs along a vertical (z) component (1 cm/month). With the aim of reducing the RMSE affecting the positioning estimates (currently of the order of 1-5 mm), the baseline length is planned to be further shortened by installing a dedicated reference GPS station outside the landslide mass.

Keywords: GNSS monitoring, rockslide, earth flow, landslide, geomorphology



SAR干渉画像で検出した2015年ネパール・ゴルカ地震によるカトマンズ市内の地すべり性地表変動
Detection of landslide surface deformation in Kathmandu triggered by the 2015 Gorkha,
Nepal earthquake using InSAR image

*佐藤 浩¹、宇根 寛²

*Hiroshi, P. Sato¹, Hiroshi Une²

1.日本大学文理学部、2.国土地理院

1.College of Humanities and Sciences, Nihon University, 2.GSI of Japan

先行研究は2015年ゴルカ、ネパール地震（Mw7.8）で山岳地域に4000ヶ所以上の斜面崩壊が生じたことを述べた。また、別の先行研究は、地震前後のAdvanced Land Observing Satellite-2 (ALOS-2) /Phased Array L-band Synthetic Aperture Radar-2 (PALSAR-2) データから生成した干渉画像を判読して、地震による地盤沈下を認定した。しかし、地表変動は詳細に議論されていない。著者は、小澤（2014）のソフトウェア RINC 0.41で生成したこれらの画像を使って2.5次元解析（Fujiwara et al. 2000）を行い、詳細な局所の地表変動データを得た。このデータと現地調査から判断して、この地表変動は地盤沈下によるものではなく、地すべり、とりわけ側方流動であることを結論づけた。本稿で用いたPALSAR-2データについては、東京大学地震研究所の特定(B)「新世代合成開口レーダーを用いた地表変動研究」の枠組みでJAXAから支給されたものを利用した。また、本研究は科学技術振興機構J-Rapidプロジェクトの2015年ネパール地震に関連した「ネパール大地震による山地斜面災害の現状把握と復興計画策定のための斜面災害評価図の作成」（研究代表者：京都大学千木良教授）の費用の一部を使った。

○参考文献

Fujiwara S, Nishimura T, Murakami M, Nakagawa H, M. Tobita M, Rosen PA (2000) 2.5-D surface deformation of M6.1 earthquake near Mt Iwate detected by SAR interferometry. Geophysical Research Letters 27: 2049-2052.

小澤 拓 (2014) : 防災科研におけるInSAR解析ツールの開発—その3—。2014年日本地球惑星科学連合大会予稿, STT59-P12. <http://www2.jpgu.org/meeting/2014/session/S-TT59.html>

キーワード：合成開口レーダー、地すべり、ゴルカ、ネパール、地震

Keywords: SAR, Landslide, Gorkha, Nepal, Earthquake

斜面崩壊の危険度評価における高精細地形データの応用

High-definition topography applied to landslide hazard assessment around Aso Volcano

*齋藤 仁¹、内山 庄一郎²、小花和 宏之³、早川 裕弐⁴

*Hitoshi SAITO¹, Shoichiro Uchiyama², Hiroyuki Obanawa³, Yuichi S. Hayakawa⁴

1. 関東学院大学 経済学部、2. 防災科学技術研究所、3. 千葉大学 環境リモートセンシング研究センター、4. 東京大学 空間情報科学研究センター

1. College of Economics, Kanto Gakuin University, 2. National Research Institute for Earth Science and Disaster Prevention, 3. Center for Environmental Remote Sensing, Chiba University, 4. Center for Spatial Information Science, the University of Tokyo

In the last few years, small unmanned aerial vehicles (UAVs), and structure from motion and multi view stereo (SfM-MVS) photogrammetry have attracted a tremendous amount of interest for the creation of high-definition topographic data. This study was conducted to detect temporal changes of topography around shallow landslides using small UAVs and SfM-MVS photogrammetry. Study areas are the Sensuikyo area (1.2 km²) and the Saishigahana area (0.06 km²) around Aso Volcano, where many shallow landslides occurred because of heavy rainfall in July, 2012. During 2014–2016, field surveys were conducted using small UAVs. After acquiring high-definition DSMs and ortho-rectified photographs, we analyzed the topographic changes of shallow landslides in comparison to LiDAR-based DSMs in 2004.

We obtained ortho-rectified photographs and DSMs with spatial resolutions of 4 cm and 10 cm, respectively. In the Saishigahana area, 20 landslides (20–4,600 m²) occurred. The ratio of the total landslide area reached 30% of the area. These landslides tended to occur specifically on 40-degree slopes. The landslide depth was ca. 1.0 m. The estimated total landslide volume was 1.5–2.8×10⁵ m³/km². In the Sensuikyo area, 300 landslides (10–10,000 m²) occurred. The estimated total landslide volume was 1.1–1.4×10⁵ m³/km². In the Sensuikyo area, the landslide distribution was not uniform. Our results indicate that topography and past landslide history affected these landslide occurrences. Additional studies must be conducted to detect temporal changes of topography and vegetation around shallow landslides based on multi-temporal ortho-photographs and DSMs.

キーワード : shallow landslide、UAV、SfM-MVS photogrammetry

Keywords: shallow landslide, UAV, SfM-MVS photogrammetry

Impact of glacier recession on debris-flow fan morphology at Fox Valley, New Zealand, using airborne photogrammetry

*Christopher A Gomez¹, Heather Purdie¹

1.University of Canterbury

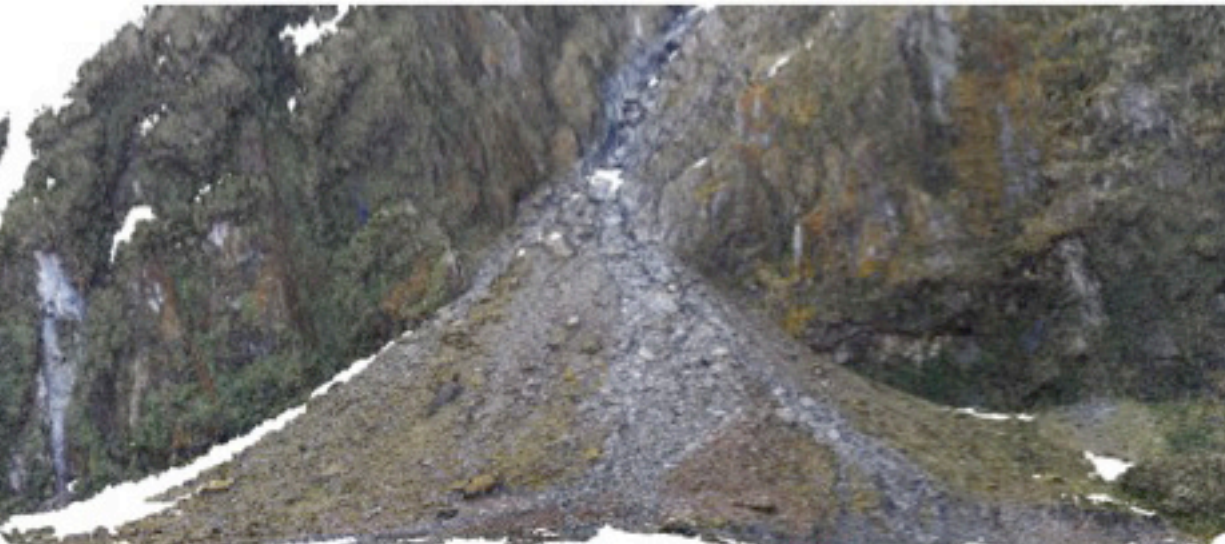
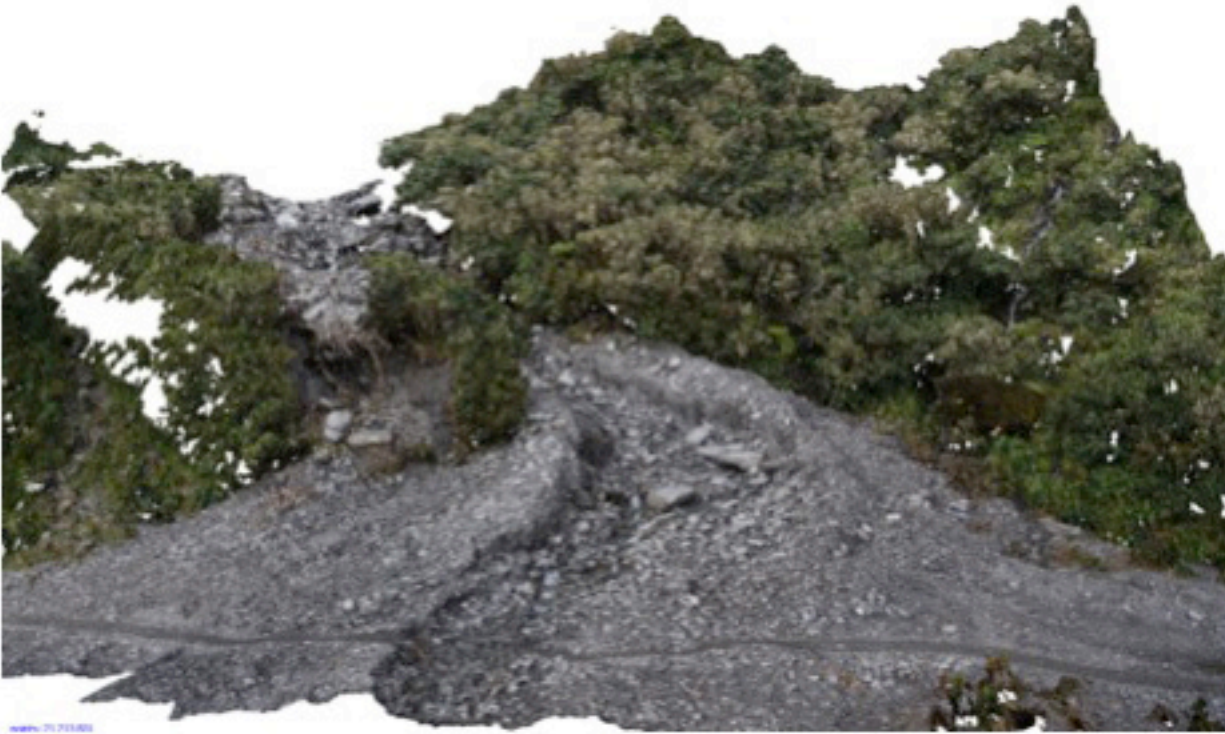
The West Coast of New Zealand annually experiences ~3,000 mm of rainfall at the coast and up to 12,000 mm near the Alpine ridge. Although those important precipitations have helped glaciers reaching 300-400 m asl at Fox Glacier and Franz Josef, present conditions have pushed the glacier terminus of Fox Glacier about 800 m upstreamward from where it was in 2000. This recession has freed a number of tributary valleys that were plugged by the ice. The junction between the main valley stem and the tributary is now occupied by exceptionally large fans, which were generated during the ice recession phase.

In order to understand how the ice recession and the debris-flow have created the debris-flow fans and what morphology was created, we have used an analysis of high-resolution topography.

Because of the quasi-omnipresence of low-clouds in the valley, there are very few aerial data available for the lower Fox Valley. Consequently, we flew in 2015 a commercial helicopter, from which we collected 150 photographs with a SLR camera 35 mm focal. This first dataset was completed by a series of photographs taken from a DJI Phantom2-Vision+ (~350 photographs). Finally, thirty Ground Control Points and 220 Quality Control Points were collected using RTK GNSS (Trimble R8). The data was then processed using the SfM software Photoscanpro, from which the dense pointcloud was exported in ArcGIS, where a DSM was generated. As most of the fan is "vegetationless", the DSM was considered as the DEM.

Results have shown the presence of a series of terraced surfaces imbricated with each other, and which correspond to the past-limits of the glaciers. Those surfaces are now eroded by the debris-flow that reaches the lowered base level. This has therefore resulted in an increase of material reaching the river-bed, generating sediment waves in the sediment cascade.

Keywords: debris flow fan, glacier retreat, sediment cascade, photogrammetry, Fox Glacier, New Zealand



Multi-resolution analysis of landscape characteristic length scales

Paola Passalacqua¹, Harish Sangireddy¹, *Colin Stark²

1.Department of Civil Architectural and Environmental Engineering and Center for Research in Water Resources, University of Texas at Austin, 2.Lamont-Doherty Earth Observatory, Columbia University

The wide availability of high resolution topography data has revolutionized the way we analyze landscapes. Information at fine scales allows the extraction of geomorphic features such as channel heads and the detection of geomorphic process transitions.

Here we present a technique called multi-resolution analysis (MRA) to analyze landscapes across scales, quantify how the probability density function of topographic attributes changes with scale, and identify characteristic length scales. The method consists of convolving high resolution data with Gaussian kernels of increasing standard deviation to obtain topography data at different scales. At each scale, we compute the probability density function of curvature and topographic index, defined as the ratio of slope and contributing area in logarithmic scale. By analyzing the probability density function of each attribute across scales, we detect scaling breaks. Through the analysis of 1D and 2D synthetic signals as well as the analysis of numerically simulated landscapes under controlled initial and boundary conditions, we equate the detected scaling breaks to the scale of surface roughness and the median hillslope length scale. The MRA approach is then applied to various real landscapes to quantify their characteristic length scales.

Keywords: high resolution topography, roughness, hillslope

Simulating and Quantifying Legacy Topographic Data Uncertainty: An Initial Step to Advancing Topographic Change Analyses

*Thad A Wasklewicz¹, Zhen Zhu¹, Paul Gares¹

1.East Carolina University

Integrating the disparate datasets (e.g. aerial photographs and point cloud data gathered with a variety of more recent sources) to unravel topographic changes in varying geomorphic contexts involves a number of issues. These issues range from data compatibility associated with the different data collection techniques, to legacy data that contain unknown error, unreported error, or in some cases known deficiencies, to integrating this information in a manner whereby scientists can definitively derive the extent to which a landform or landscape has and will continue to change in response natural and/or anthropogenic processes. Here, we examine the question: how do we evaluate and portray data uncertainty from the varied topographic legacy sources and combine this uncertainty with current spatial data collection techniques to detect topographic changes? Digital terrain model (DEM) uncertainty can be modeled as a stochastic process. The uncertainty model tends to vary across the region of interest, and yet remain locally correlated. We consider the spatial variability and correlation on a grid of anchor points. The elevation uncertainties observed on the anchor points are modeled using "states" in a stochastic estimator. This type of estimators is used track the evolution of the uncertainties. The estimator is natively capable of incorporating sensor measurements with various times of validity. Even when a sensor does not directly observe an anchor point, the geometric relationship between the anchor point and the sensor measurement can still be approximated, thanks to spatial correlation. Our results show it is indeed possible to incorporate measurements and data from a variety of sources and quality. The estimator provides a history of DEM estimation as well as the uncertainties and cross correlations observed on anchor points. Our work provides preliminary evidence that our initial approach is valid and warrants further exploration. Our intent is to corroborate and further develop this work with data and results from physical models and multi-temporal field data and analyses.

Keywords: data uncertainty, topography, geomorphology

Increasing the Impact of High Resolution Topography through Open, Online Access to Data and Processing

*Christopher J Crosby¹, J Ramon Arrowsmith², Viswanath Nandigam³

1.UNAVCO, Boulder, CO USA, 2.School of Earth and Space Exploration, Arizona State University, Tempe, AZ, USA, 3.San Diego Supercomputer Center, University of California San Diego, La Jolla, CA, USA

The availability of high-resolution topography has been revolutionary for Earth science, environmental, and engineering applications. These data are powerful tools for studying the earth's surface, its vegetation cover, and the built environment. Typical surface processes act at fine spatial scales (<1m) to produce intricate landforms. High-resolution topography measures the three-dimensional geometry of the earth's surface and overlying features at appropriate resolutions. In addition, surface changes due to erosion, transport and sedimentation, as well as displacements due to earthquakes, landslides, volcanoes are often <1-10 m. Temporal comparisons of high-resolution topography enables scientists to quantify such changes in unprecedented ways that inform our understanding of surface, volcanic, and tectonic processes.

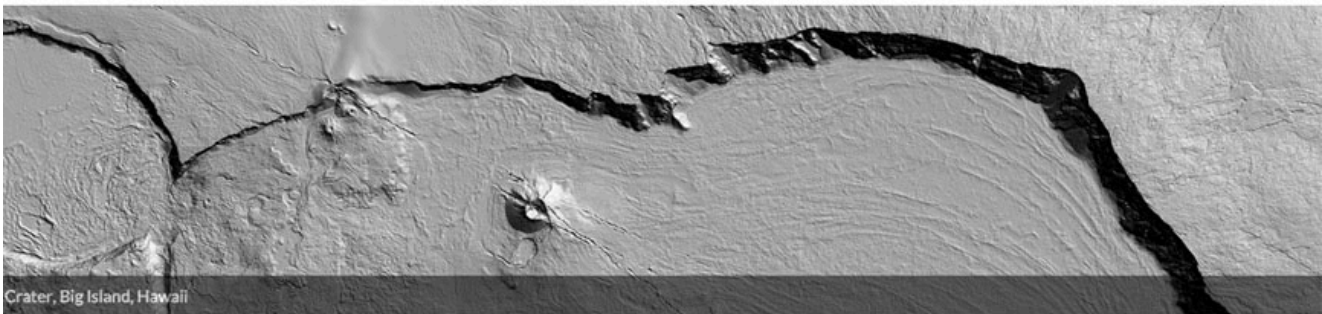
Technologies such as airborne, terrestrial, and mobile laser scanning, structure from motion photogrammetry, and multi-beam sonar are becoming increasingly accessible, making the collection of high-resolution topography more common. Open access to these data and a cyberinfrastructure platform that enables users to discover, manage, share, and process them increases the impact of investments in data collection and catalyze scientific discovery. Furthermore, open and online access to data enables broad interdisciplinary use of high-resolution topography across academia and in communities such as educators, public agencies, and the commercial sector.

OpenTopography (OT) was initiated in 2009 with funding from the US National Science Foundation to democratize access to Earth science oriented high-resolution topography data and processing tools. Hosted at the San Diego Supercomputer Center (SDSC) at University of California San Diego, OT utilizes cyberinfrastructure, including large-scale data management, high-performance computing, and service-oriented architectures to provide efficient Web based access to large, high-resolution topographic datasets. OT colocates data with processing tools to enable users to quickly access custom data and derived products for their application, with the ultimate goal to make these powerful data easier to use.

OT's rapidly growing data holdings currently include 188 lidar point cloud datasets (>835 billion points) covering 180,381 km². Shuttle Radar Topography Mission (SRTM) global datasets, as well as pre-computed lidar DEMs are also available. Data come from a variety of providers through strong partnerships, including NSF supported projects and numerous US federal, state, and local agencies. As a testament to OT's success, several groups rely solely on OT to deliver data to their users. More than 10,000 OT registered users and tens of thousands of anonymous guest users have run 60,000 point cloud jobs, accessing over 2.5 trillion lidar points. This use has resulted in more than 151 peer reviewed publications across numerous academic domains including Earth science, geography, computer science, and ecology.

As OT matures and high-resolution topography becomes more ubiquitous in Europe and Asia, we seek new partnerships to increase access to high-resolution topography outside the United States.

Keywords: topography, lidar, OpenTopography



Crater, Big Island, Hawaii

[View](#) [Edit](#) [Manage display](#) [Track](#)

Latest News

Short Course: Imaging and Analyzing Southern California's Active Faults with High Resolution Topography

Dec 11, 2015

We are happy to announce a short course on [Imaging and Analyzing Southern California's Active Faults with High Resolution Topography](#). High...

OpenTopography at the 2015 American Geophysical Meeting

Dec 9, 2015

Come connect with OpenTopography at the [2015 American Geophysical Union meeting in San Francisco](#)! OpenTopography will be in booth #211 on "NSF Street" in the exhibit hall. The booth is shared with the...

Raster data now available for areas in California, Colorado, New Hampshire, and Washington

Oct 8, 2015

OpenTopography is happy to announce the release of seven new raster datasets. These datasets are derived from previously released point cloud data, and allow users to quickly and easily access high resolution digital elevation models. Six of these...

Latest Blog Post

OpenTopography: 2015 in Review Infographic

Data Summary

Point Cloud datasets: **188**

Point Cloud area: **180,381 km²**

No. of lidar returns: **835 Billion**

Raster datasets: **82**

Global DEM area: **239,120,000 km²**

High resolution DEM area: **127,200 km²**

[More Data Metrics](#)

Latest Lidar Datasets:

[Victor Harbour - South Australia, 2011](#)

[Calhoun Critical Zone Observatory](#)

[2014 Leaf On Survey](#)

[Snake River, Wyoming](#)

[Surprise Valley, CA](#)

[Live Dashboard](#)

Twitter

 **OpenTopography** @OpenTopography 16 Feb

A server problem is restricting access to the Indiana statewide lidar point cloud dataset. [More to have the lidar restored](#)

UAV-SfM手法による岩塊斜面の微地形測量：然別火山群・東ヌプカウシヌプリの西面斜面を例に
Micro-topographic survey on the block slope using UAV-SfM method: a case study on the west
face of Mount Higashi-Nupukaushi, Shikaribetsu volcanic group, Hokkaido, Japan

*吉田 英嗣¹、小花和 宏之²、早川 裕弐²、高場 智博¹、松本 一希²

*Hidetsugu Yoshida¹, Hiroyuki Obanawa², Yuichi S. Hayakawa², Tomohiro Takaba¹, Kazuki Matsumoto²

1.明治大学、2.東京大学

1.Meiji University, 2.Univ. of Tokyo

トータルステーションなどによる従来の測量手法は精度こそ高いものの、アクセス困難地での実施は非現実的な場合がある。一方、小型無人航空機 (sUAV) による空撮画像のSfM (複数視点の画像から撮影場所および対象物の3次元位置を再現する方法) -MVS (多視点ステレオ) 写真測量 (以下UAV-SfM手法) によって得られる地形情報は、そうしたアクセス困難地における地形を理解するにあたって十分な空間精度を有していることもあり、様々な調査地にて手法の有用性が示されてきている。そこで本発表では、粗大礫に構成される然別火山・東ヌプカウシヌプリ西面の岩塊斜面を対象に、UAV-SfM手法による微地形測量を実施した例を紹介する。岩塊斜面は一般には周氷河作用の関与が指摘されてきた地形だが、マスマーブメントに起因する場合もあるとされる。したがって、斜面地形発達および斜面プロセスの観点から、いまなお調査の必要性がある地形といえるが、これまでに斜面地形の特徴が精密に調査されることがほとんどなかった。筆者らの調査ではDJI社のPhantom3を用い、高度10-50mから撮影した1124枚の写真を用いてDSMおよびオルソ写真を作成した。UAV-SfM手法を適用することによって、地形と地形物質 (巨礫) との関係、とくにプロセスを反映と思われる岩塊の配列やそれがなす地形について明確化されることがわかった。

キーワード：UAV-SfM手法、岩塊斜面、然別火山群

Keywords: UAV-SfM method, block slope, Shikaribetsu volcanic group

蓼科山頂部に発達する岩塊斜面構成礫の特徴：現場での計測とUAV空撮の複合的手法に基づく斜面形成プロセスの解明に向けて

A survey for the larger block distribution on the block slopes around the summit area of Mount Tateshina, central Japan: an application of combined on-site measurements with UAV-SfM method providing clues as to the understanding of block slope development

*菊池 基¹、吉田 英嗣¹、小花和 宏之²

*Motoi Kikuchi¹, Hidetsugu Yoshida¹, Hiroyuki Obanawa²

1.明治大学、2.東京大学

1.Meiji University, 2.The University of Tokyo

従来、岩塊斜面に関してはさまざまな研究がなされており、その形成要因は、斜面崩壊や地すべりといった重力性の物質移動、もしくは周氷河作用による礫の生産およびその移動・堆積、の二つが主とされてきた。しかし、これらの成因論は試案にとどまるものが多く、今もなお議論の余地が残されている。本研究の対象地である蓼科山頂部のように、岩塊斜面はアクセスの比較的困難な場所に発達し、さらには斜面傾斜が30°前後と大きいこと、岩塊斜面を構成する礫間が空隙となっていることがあり、斜面の成立条件としての地形測量の実施が一般に困難であることなどから、これまで十分な調査がなされてこなかった。

本研究では、岩塊斜面地形をつくる巨礫の配置状況について現場にて計測調査を実施し、さらにUAVを用いた空撮により、上記のような特徴を持つ岩塊斜面調査におけるその有用性を検討した。現場では蓼科山の西向きおよび南向き斜面に斜面傾斜方向に沿う測線を設け、地形縦断面測量、礫の長径・長軸方向・風化程度の測定を行った。また、南向き斜面においてUAVによる空撮を実施し、現場で得たデータとの比較に基づき、その有用性を確かめた。以下に現時点での結果を示す。

岩塊斜面を構成する礫の長径の分布および長軸方向によれば、西向き斜面では斜面下部に巨礫が多く分布する箇所があり、また南向き斜面では巨礫が斜面下方に多く分布する傾向が顕著であった。後者については、UAV空撮に基づくオルソ写真から判読される巨礫の分布と整合した。同様に空撮写真から作成したDSMにより、岩塊斜面の詳細な地形図が作成され、斜面の地形条件と斜面構成物質としての巨礫の配列との関係が明確となった。巨礫の長軸方向は、両斜面とも、斜面と平行に配列される傾向にあることが明らかとなった。

以上により、斜面を構成する礫は重力性の移動によって巨礫が斜面下方に集中した後、周氷河作用が働くことによって長軸方向が斜面の傾斜方向と平行になるように配列されたとも推測される。現在の蓼科山では、その標高からみて周氷河作用が強く働いている可能性は低い。さらに、山体の形成期が最終氷期の後半であることから、山頂ドーム形成以後の急激な気候環境変化に対する斜面ごとの応答の違いにより、形成プロセスに差異が生じ、全体としては複合的要因によってできた斜面である可能性が指摘される。ただし、岩塊斜面の末端部は舌状で、斜面の縦断形から小崖が確認できたことなどから、岩塊斜面の形成要因として最も重要な役割を果たしたのは周氷河性作用であると考えられる。

今後、西向き斜面においてもUAVを用いた空撮を実施し、現場からのアプローチが実質不可能な範囲も含めた、面的な地形情報の把握に務めたい。

キーワード：岩塊斜面、写真測量、重力性土砂移動、周氷河プロセス

Keywords: block slope, photogrammetry, rapid mass-movement, periglacial process

The Application of Unmanned Aerial Vehicle (UAV) for Biotope Monitoring Program

*Yessy Arvelyna¹, Namiki Kazuhiro¹, Tomita Kunihiro¹, Hosomi Koichi¹

1.Civil Engineering & Eco-Technology Consultants

Nature conservation is carried out at Miyagase Dam area, Kanagawa Prefecture since 1996. Construction work is held in 1992-1994 period for nature restoration works, and its effect is monitored by biotope mapping survey. Observation of living organisms and region temperature at study area are done during 1996-2014 period. In 2014, UAV aerial imaging has been deployed for additional 2D/3D data analysis. The observation used three cameras, e.g. optical camera (Canon S100), Near Infra-Red (NIR) camera (Canon S110 Yubaflex) and a thermal camera (Thermo Shot F30S) board on a Multicopter, which flew with flight altitude of 100m. The 2D/3D mapping products from optical images were derived using Structure from Motion (SfM) method and its results are used for spatial distribution of vegetation and habitat mapping (Fig.1a). Ground moisture and thermal mapping using NIR camera and thermal camera are used in thermal habitat study (Fig.1b, Fig.4). This observation method can be used for monitoring of biotope's environment on the finest scale. In this study, to observe the effect of local temperature changes, we observed the population and habitat of *Poikilotherm*, organisms which have body temperature that can be affected by the surrounding temperature, such as dragonflies.

The observation result shows that the combination of UAV data and field survey data of biotope give a new perspective and good accuracy on 2D/3D data analysis, i.e. 5-31 cm resolution on vegetation and habitat mapping. Normalized Difference Vegetation Index (NDVI) map derived from optical image shows spatial distribution of chlorophyll content which correlates with tree canopy structure (Fig. 2). High NDVI index shows spatial vegetation distribution of Japanese cedar (*Cryptomeria japonica*). Whereas, the distribution of autumn leaves (e.g. konara oak (*Quercus serrata*), etc.) is shown as high normalized index of band red and green ($(b2-b3)/(b2+b3)$) retrieved from NIR image (Fig. 3a). The analysis of ground moisture level of study area is derived using the normalized difference of green and red band of NIR image. On Fig. 3b, red area shows high moisture level which is habitat preference of dragonfly. Since band math calculation can be affected by tree shade, masking is suggested on preprocessing. Thermal camera captured optical and thermal images simultaneously. Field temperature measurement was held during flight time and its result shows good correlation with thermal map. Although thermal mapping with 31 cm resolution can provide good temperature distribution on observed area, the development of thermal camera sensor is needed for higher accuracy, enable image metadata (Exif) modification for GPS recording to provide 2D/3D thermal mapping using SfM method.

Long term monitoring is useful to detect changes in biotope presence and structure. We observed population increase of species which has strong adaption to high temperature, e.g. Ito Tombo (*Coenagrionidae*). This species usually lives in or near pond and waterbody without streams, where temperature is warmer during spring to fall compare to the river area. Although few literatures addressed about the change of dragonfly population due to temperature, we conclude that the increase of dragonfly population possibly affected by the increase of temperature at observed area about 1.5°C during 1996-2014.

Keywords: UAV imaging application, biotope monitoring, optical image, nir image, ndwi/ndvi, temperature rise effect



Fig.1 UAV photo result; a) optical image (RGB=123) and b) NIR image (RGB=NIR:R:G). Cooperation with Sagami River Water System Wide Area Dam Administration Office, Ministry of Land, Infrastructure, Transport and Tourism.

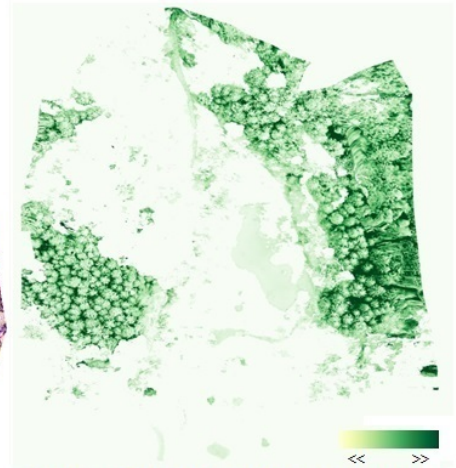


Fig. 2 Chlorophyll distribution of NDVI map (optical image)

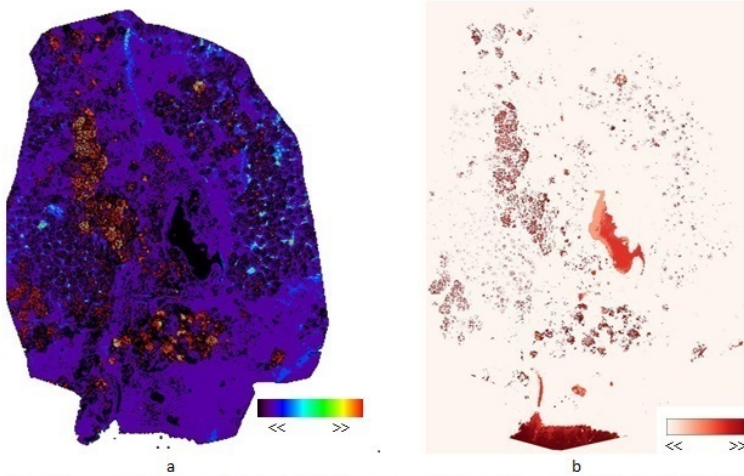


Fig.3 a) Autumn leaves map (konara oak, etc.) and b) ground moisture level map (red is habitat preference of dragonfly) derived from normal difference index of green and red band of NIR image.

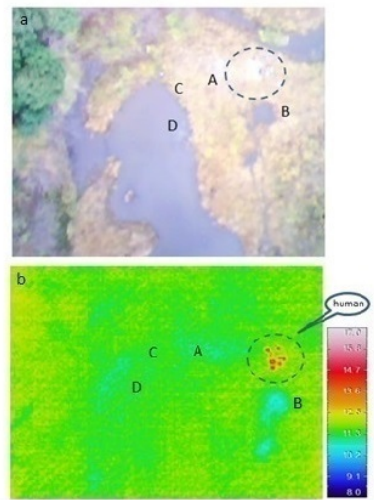


Fig.4 Thermal camera imaging result: a) optical image and b) thermal map. Field temperature measurement (2014/11/28) of A (soil): 10.8°C, B (grass): 12.3°C, C (near pond): 11°C, and D (pond): 11.5-11.8°C, show good correlation with thermal map.

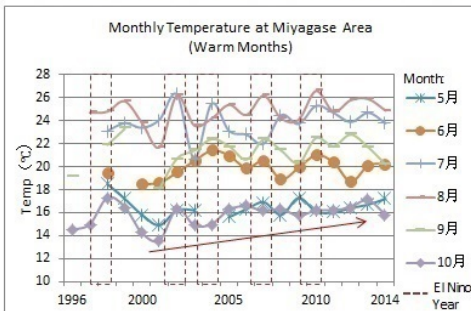


Fig. 5 Monthly temperature at Miyagase area during 1996-2014 period

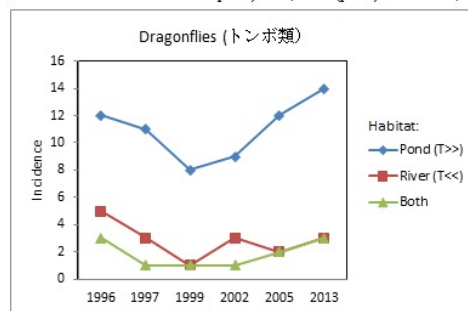


Fig. 6 The incidence index of dragonflies in various habitats during 1996-2013 period

小型UAVを用いた積雪分布の3次元計測

Measurement of snow distribution using small UAV

*小花和 宏之¹、河島 克久²、大前 宏和³*Hiroyuki Obanawa¹, Katsuhisa Kawashima², Hirokazu Ohmae³

1.東京大学工学系研究科、2.新潟大学災害・復興科学研究所、3.株式会社センテンシア

1.School of Engineering, The University of Tokyo, 2.Research Institute for Natural Hazards & Disaster Recovery, Niigata University, 3.Sentencia Corporation

Recently aerial photography using small UAV (Unmanned Aerial Vehicle) carrying a compact camera and SfM (Structure from Motion) technique has been carried out in many areas. As one of the advantages of the small-multicopter survey it can closely shoot and measure the mountain slope where the existing manned airplane cannot survey enough because its flight height is relatively high and so it cannot come close to the object. In addition, because running cost of the small UAV survey is far less and its operation is relatively easy, repetitive measurements are easier than the existing methods such as aerial photogrammetry and laser scanning with a manned airplane. We have carried out the topographic measurements using the above advantages at snow covered area in Niigata Prefecture, Japan. By the repetitive UAV measurements we have constructed the multi-temporal 3D models of the surfaces of the ground and snow field and could quantitatively clarify the snow distribution with higher spatial and temporal resolutions. The snow-depth values estimated by the UAV surveys corresponded reasonably well with the actual data measured by snow probe. The UAV-SfM technique has a great potential for a wide range of application, because of its high data accuracy, low initial and operational costs, allowing high spatial and temporal data recording.

キーワード：無人航空機、Structure from Motion、積雪分布

Keywords: UAV, SfM, snow distribution



Using an unmanned aerial vehicle to examine influence of topography on development of debris flows in a initiation zone of Ohya landslide, Japan

Using an unmanned aerial vehicle to examine influence of topography on development of debris flows in a initiation zone of Ohya landslide, Japan

*経隆 悠¹、堀田 紀文¹、今泉 文寿²、早川 裕弐³

*Haruka Tsunetaka¹, Norifumi Hotta¹, Fumitoshi Imaizumi², Yuichi S. Hayakawa³

1.筑波大学生命環境科学研究科、2.静岡大学農学部、3.東京大学空間情報科学研究センター

1.Faculty of Life and Environmental Sciences, University of Tsukuba, 2.Faculty of Agriculture, Shizuoka University, 3.Center for spatial Information Science, The University of Tokyo

In debris flow initiation zones, flows alter the topography of deposited sediments through their development by entrainment. Although it is possible that such topographic changes influence the magnitude of subsequent debris flows, this influence is not well understood because of the difficulty in conducting a temporal series of high-definition topography measurements. Therefore, to examine how topography affects the development of debris flows, we carried out structure-from-motion (SfM) photogrammetry from aerial shoots by an unmanned aerial vehicle (UAV) in the Ichino-sawa subwatershed of the Ohya landslide, in central Japan. Debris flow occurrences and rainfall were monitored using interval cameras and a rain gauge. In the gully in the hillslope, the sediment discharge was dominated by entrainment due to the deposited sediments that were gradually discharged by storm rainfall events. In comparison, deposition several meters thick typically occurred in the main channel. Consequently, the topographic changes in the main channel were more complex than those of the gully. Furthermore, in the main channel, the trends in the changes regarding the amount of sediment differed in the upper and lower parts of the confluence of the gully. In the upper part of the main channel, sediment entrainment and deposition occurred repeatedly after each debris flow, whereas entrainment by such flows dominated the topographic changes in the lower part. Consequently, deposited sediment supplied by a previous debris flow in the upper part contributed to the development of the subsequent debris flow. The results indicate that the magnitude of the debris flow was affected by the topography of the main channel created by previous flows, including flows from the gully.

キーワード：土石流、深層崩壊、SfM-MVS、UAV

Keywords: Debris flow, Deep-seated landslide, SfM-MVS, UAV

Machine Learning Algorithm for impact crater extraction from high resolution DEM derived from SfM data in Vanuatu

*Christopher A Gomez¹, Ben Kennedy², Rebecca Fitzgerald², Anders Lenksjold²

1.University of Canterbury, Dept. of Geography, 2.University of Canterbury, Dept. of Geology

As the 2015 Ontake eruption unfortunately reminded us, volcanic ballistic impacts are serious threats to humans and infrastructures alike. To improve disaster risk management, probabilistic and physical models calibration, data on the spatial distribution of ballistic impacts are essentials. Investigating this issue, the present contribution explains the usage of a crowd-sourced high-resolution close-range photogrammetric technique (Structure from Motion), which was used to collect 3d Data of impacts in Vanuatu around an active volcanic vent, and for which a machine-learning algorithm was developed.

The dataset used in this presentation was collected using a GoPro3 camera, which was chosen as it is easy to operate and relatively low-cost, with the goal to simulate a crowd-sourcing exercise. For the present experiment, a student with no experience of SfM and to whom only simple information was given, collected the data at 12 different sites. Out of 12 investigated sites, 8 provided images of sufficient quality, number and overlap.

Using half of the 8 successful survey sites as training sites and the other half as test sites, the developed algorithm detects the lowest point in a depression and try to determine whether it has been created by a volcanic bomb or whether it is an unrelated depression. This choice is based on a comparison with an existing dataset of angles of curvatures of the radii of the depression. The algorithm is meeting some success, increasing the information productivity - which is often an issue in post-disaster management - although its scalability remains to be proven at other volcanoes.

Keywords: close-range photogrammetry, Structure from motion, Machine learning, Vanuatu Volcano



異なるレーザースキャナーを用いた同時航空レーザー測量結果の比較

Comparison of DEMs derived from simultaneous airborne LiDAR survey using two types of laser scanner

*笠井 美青¹、丸谷 知己¹、吉田 裕敏²

*Mio Kasai¹, Tomomi Marutani¹, Hirotooshi Yoshida²

1.北海道大学大学院農学研究院、2.国土交通省北海道開発局札幌開発建設部

1.Research Faculty of Agriculture, Hokkaido University, 2.Hokkaido Regional Development Bureau, Ministry of Land, Infrastructure, Transport and Tourism

Airborne Light Detection and Ranging (LiDAR) survey provides geomorphic information with fine details even for forests; thus, it is being increasingly used in measuring landscape. Recently, the survey was operated sequentially for rivers to evaluate geomorphic changes from the difference of elevation, by using digital elevation models (DEMs) derived from each survey. However, it is difficult to apply the difference of DEMs to hill slopes as it often presents unrealistically large values. This is due to errors of DEMs, which can be expected to be higher for hill slopes, considering that denser vegetation cover and steeper slopes prevent the laser beams from the scanner from reaching the ground surface and less ground points are used to produce the models. In addition, it is difficult to estimate the error ranges of DEMs for hill slopes as there are fewer ways to crosscheck the values. To examine the ranges, this study conducted airborne LiDAR survey in four locations in Hokkaido by using two types of laser scanner, old and new version of SkEyeS Box (SkEyeS Unlimited), and compared the DEM products. One site was located on a volcano fan while three were on mountain slopes that were prone to landslides and covered by trees. The survey was carried out on the same day in each site in October 2015. The laser scanner was mounted on an unmanned helicopter (YAMAHA RMAX G1), which made it possible to operate the survey twice in a day. After ground data was extracted from the survey data, DEM of 1 m, 2 m, 5 m and 10 m sizes were produced for each case. When comparing between DEM values of the same location, finer DEM sizes showed less elevation difference in all the sites. However, 10 to 20% of the 1 m DEM sets presented more than 0.7 m of difference in each site. They were likely to appear along stream banks, slope breaks, and the rim of the survey areas. In addition to elevation, the slope angle was obtained on ArcGIS software using the DEMs and was similarly compared for each site. The larger DEM presented a better agreement for the values at the same locations, although 5 m DEM was considered to be better for analysis to avoid losing the information of fine geomorphic features. In this case, 10 to 20% of the DEM sets in each site presented a difference larger than 5 degrees. These analyses suggested that the DEMs for hill slopes contained the degrees of errors, which were difficult to use for volumetric evaluation from a sequential survey. However, the difference of DEMs from the survey could be still useful to extract the locations of moving slopes as the information of change in the ground surface should be reflected in a group of DEMs on those hill slopes.

Spatial pattern analysis of wall surface modification by weathering in Yoshimi-Hyakuana cave using terrestrial laser scanning

Spatial pattern analysis of wall surface modification by weathering in Yoshimi-Hyakuana cave using terrestrial laser scanning

*早川 裕弍¹、小口 千明²、青木 久³、有賀 夏希³

*Yuichi S. Hayakawa¹, Chiaki T. Oguchi², Hisashi Aoki³, Natsuki Ariga³

1.東京大学空間情報科学研究センター、2.埼玉大学理工学研究科、3.東京学芸大学大学院教育学研究科

1.Center for Spatial Information Science, The University of Tokyo, 2.Graduate School of Science and Engineering, Saitama University, 3.Graduate School of Education, Tokyo Gakugei University

Detection and quantitative evaluation of actual changes in rock surface morphology are crucial for understanding weathering processes. Repeated measurements by terrestrial laser scanning (TLS) were performed at test sites in the Yoshimi-Hyakuana cave in Saitama Prefecture, central Japan. Six time series of point clouds were obtained in 3 years, and those point clouds were finely aligned to each other at millimeter-scale accuracies applying the ICP algorithm for unchanged domains. Digital elevation models (DEMs) were then produced by projecting the point cloud on a vertical plane at a resolution of millimeters. Centimeter-scale changes in the wall surface were successfully detected. Such changes are particularly active at a wall close to the outlet of the cave, and are found to be concentrated on a certain height above ground. This indicates that the rock surface modification is actively induced by salt weathering where groundwater evaporation is favorable. In contrast, walls located more inside of the cave show less or almost no changes in their surface. The air temperature and humidity monitoring at the wall surfaces supports this fact, suggesting the decreasing effects of environmental fluctuations which are higher around the cave entrance but lower in the inner side. This study is supported by JSPS KAKENHI Grants (20312803, 25702014).

キーワード：地上レーザ測量、風化、点群、デジタル標高モデル

Keywords: terrestrial laser scanning, weathering, point cloud, digital elevation model

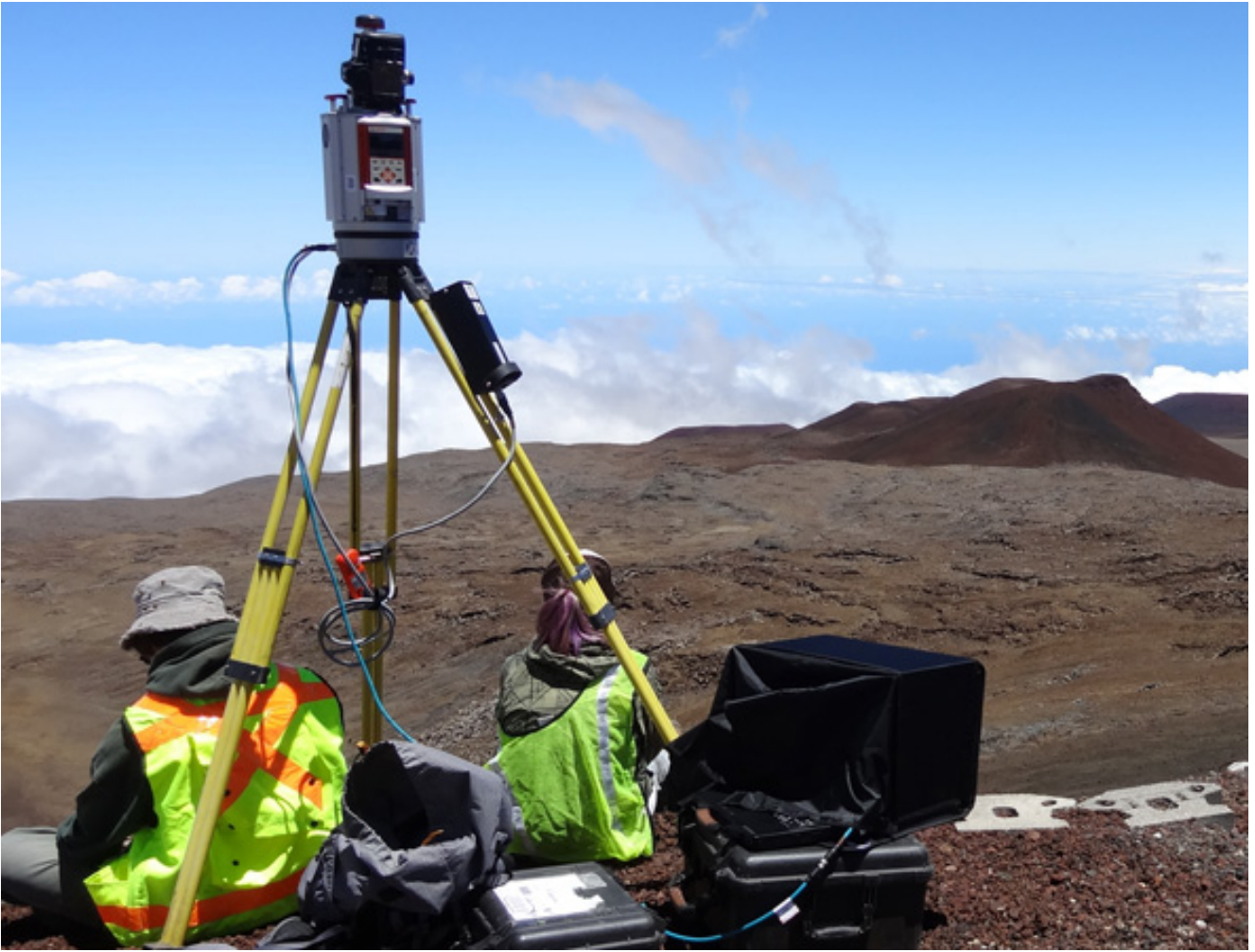
A Diversified Approach to Generate High-Resolution Topographic Data on the Maunakea Summit, Hawai'i Island

*Nathan M Stephenson¹, Ryan L Perroy²

1.University of Hawaii at Hilo Spatial Data Analysis and Visualization Lab, 2.University of Hawaii at Hilo Geography and Environmental Studies

The Maunakea summit (3200-4205 m) of Hawai'i Island is a unique aeolian-driven stone alpine desert ecosystem created by late stage volcanism and glaciation. The summit area geomorphology contains steep cinder cones, scoria, and glacial moraines and erosional features, producing a somewhat complicated pattern of surface mineralogy. The summit is also home to the world's most advanced constellation of telescopes and numerous endemic or rare plants and arthropods. Surprisingly, little high-resolution topographic data exists over much of the area, which are needed to further understand summit erosional processes and to better conserve and manage endemic species habitat. To rectify this situation, we used a VZ 400 Riegl terrestrial laser scanner to collect a high-resolution lidar dataset (33 pts/m² average) over ~15 km² across the summit area in 2014. The lidar coverage contained occlusions due to environmental obstacles and perspective issues. To 'fill' two of the largest/important occlusions (36,081 m² within the interior crater of a cinder cone and a 256,485 m² exterior slope of another remote cone) we generated new topographic datasets via Structure from Motion (SfM) by taking photos of the missing areas from ground and airborne (unmanned aerial vehicle) camera campaigns. The lidar and SfM-derived point clouds were then merged together to create a blended and continuous topographic dataset. Vertical errors from the ground-based photo campaign were generally higher than for the UAV survey, ranging between +3.76 & -1.75 m, though after geoprocessing the average vertical errors for both datasets was <0.05 m. Lessons learned include the importance of creating enough overlap between the raw lidar and SfM point cloud datasets to be able to register them together, instead of solely relying on differential GPS coordinates for ephemeral ground control points. The merged dataset will be compared to future topographic survey campaigns to detect areas of active geomorphic change and quantify contemporary erosion rates. These data are also being used to define quality habitat for the endemic wekiu bug and serve as a template for habitat restoration following future telescope decommissioning.

Keywords: UAVs, Geomorphic, Lidar



重力偏差テンソルの固有値・固有ベクトルを用いた富山県の既存断層の表層傾斜角推定
 Estimation of dip angles of faults near the surface in Toyama by eigenvalues and
 eigenvectors of the gravity gradient tensor

*菅原 弘貴¹、楠本 成寿²、駒澤 正夫³

*hiroki sugawara¹, Shigekazu Kusumoto², Masao Komazawa³

1.富山大学大学院理工学教育部、2.富山大学大学院理工学研究部(理学)、3.産業技術総合研究所
 1.Graduate School of Science and Engineering, University of Toyama, 2.Graduate School of Science
 and Engineering for Research, University of Toyama, 3.National Institute of Advanced Industrial
 Science and Technology

富山県内には、呉羽山断層をはじめ、石動断層、高清水断層、黒菱山断層等の活断層が存在する。それらの活断層について、これまで多くの地形学的研究、地質学的研究、地球物理学的研究がなされてきた。

地震防災を考える上で、活断層が動いた時に、どれくらいの範囲がどの程度揺れるのかを予測する強振動シミュレーションが重要な役割を果たす。このシミュレーションでは、断層長、断層幅の他に、断層傾斜角が重要なパラメータとなっている。断層傾斜角は、通常、反射法地震波探査等により推定するが、この探査は非常に高額である。重力探査による断層形状の推定も可能であるが、重力異常だけでは解がユニークに決定しないため、やはり地震波探査結果や深層ボーリングデータといった補助データが必要である。

近年、重力偏差探査という言葉が日本でも散見されるようになってきた。重力偏差探査とは、地下に埋没している物体による引力3成分(g_x , g_y , g_z)の各方向への微分値(g_{xx} , g_{xy} , g_{xz} , g_{yx} , g_{yy} , g_{yz} , g_{zx} , g_{zy} , g_{zz})を測定するものである。この微分値9個をまとめて、重力偏差テンソルとよんでいる。重力偏差テンソルは、対称テンソルであることが知られており、また対角成分の和は、ラプラス方程式により、0となる。したがって、重力偏差テンソルは、5つの独立成分よりなっており、測定点1点につき、この5つの情報を得る。従来の重力探査は、地下に埋没している物体が生じさせる引力3成分のうち、鉛直下向きの成分 g_z のみを計測し、構造探査に利用していた。したがって、重力偏差探査は、重力探査に比べ、5倍の情報量をもっている。

この重力偏差テンソルの固有値・固有ベクトルを用いた断層あるいは構造境界の傾斜角の推定手法が、Beiki and Peterson (2010), Beiki (2013), 楠本(2015)により開発されてきている。この手法は、重力勾配テンソルの最大固有ベクトルが構造の方を向くという特性を利用し、そのベクトルと地表面がなす角度から断層あるいは構造境界の傾斜角を、地震波探査やボーリングデータ等の補助データなしで推定する。

富山県内では、重力偏差計による重力偏差測定が行われていないが、既存の重力異常から重力偏差テンソルの各成分を計算する手法がMickus and Hinojosa (2001)により確立されているため、この手法により、富山県内の重力異常から重力偏差テンソルを推定した。Mickus and Hinojosa (2001)の手法とは、①重力異常をフーリエ変換し、②フーリエ領域での積分により引力ポテンシャルを求め、③それを各方向に2階微分し、④フーリエ逆変換を施すことで、空間領域での重力偏差テンソルの各成分を得る。

富山県内の石動断層、高清水断層、呉羽山断層、黒菱山断層について、上述の方法により断層傾斜角を推定したところ、いずれも45°~60°の範囲に推定された。これらの断層は、地表踏査から、いずれも45°~60°の傾斜角をもつことが判明しており、既存研究結果(例えば、活断層研究会, 1991)と調和的な結果を得た。これまで200 kmを超えるようなスケールの断層傾斜角に対して有効であることは示されていたが、今回の研究により、10 ~20 km程度の断層傾斜角推定にも有効なことが示され、今後の活断層研究に有用な情報を提供できるのではないかと考えている。

Evaluation of TWI-Derived Soil Depths and DEM-Assisted Terrain Slopes in Tainan Mountain Areas

*Shen Yu Hsiao¹, Shih Feng Lin¹, Jung Chieh Chang¹, Yi Chang¹

1.National Chung Hsing University

The study is aimed at evaluating the soil depths from topographic wetness index (TWI) method, and the terrain slopes from a 5m resolution digital elevation model (DEM) in Tainan mountain areas, located in southern Taiwan. The field surveys (field work) for validating the results have been being implemented in recent months. During the field surveys, a soil auger and a Nikon laser rangefinder are used for obtaining the soil depths and terrain slopes, respectively. The related methodologies for obtaining TWI-derived soil depths and DEM-assisted terrain slopes (office work), and the comparison results for office and field works will be well described in this paper. We hope that the research is able to determine the accuracies of the TWI-derived soil depths and the DEM-assisted terrain slopes in Tainan mountain areas.

Keywords: TWI, DEM, Soil Depth, Terrain Slope

Interpretation of Terrain Features by Self-Developed Red Relief IMAGE MAP

*YaoChun Kuo¹, YuShen Hsiao¹, Yi Chang¹, Wei Chang¹

1.National Chung Hsing University

We produce the Red Relief Image Maps (RRIMs) to aid terrain feature interpretations, especially in potential landside areas. RRIM is generated based on openness and slopes derived from a digital elevation model (DEM). In this study, we use software of Fortran and generic mapping tools (GMT) to produce the Self-Developed RRIMs. The related programs and theories are being constructed and are going to be completed. All kinds of terrain features will be well chosen and analyzed in the following tests. The purpose of this research is to develop a new visualization of topographic maps to provide subtle and useful terrain information and further bring contributions to the regions of disaster prevention, soil and water conservation, environmental monitoring, and resource exploration.

Keywords: RRIM, DEM, GMT

可視光衛星画像から推定する浅海域の海底地形—日本周辺海域での利用に向けて—

Shallow water bathymetry derived from visible satellite image: toward application to the waters around Japan

*松本 良浩¹、栗田 洋和¹、佐川 龍之²、平岩 恒廣³

*Yoshihiro Matsumoto¹, Hirokazu Kurita¹, Tatsuyuki Sagawa², Tsunehiro Hiraiwa³

1.海上保安庁海洋情報部、2.(一財)リモート・センシング技術センター、3.(一財)日本水路協会

1.Hydrographic and Oceanographic Department, Japan Coast Guard, 2.Remote Sensing Technology Center of Japan, 3.Japan Hydrographic Association

浅海域において詳細な海底地形データを取得する手段として、人工衛星から得られる可視光の画像を利用して水深情報を抽出する技術の開発が近年各国水路機関の注目を集めている。こうした水深情報はSatellite Derived Bathymetry (SDB: 衛星画像推定水深と訳す)と呼ばれている。

人工衛星搭載の光学センサによって計測された衛星画像を用いて、光は水中において指数関数的に減衰していくという基本理論に基づき水深を算出する。ただし、実際には、光の水中における減衰率は海域によって一定ではなく、海底面の反射率も海底面の被覆物によって異なるなど、様々な要因がセンサで受信される光の量に影響を与えるため、その過程は複雑である。

著者らは、Lyzenga(1978)の手法を基にして、わが国の海域の特性を考慮しながらSDBの解析手法を開発し、実用に向けた検証を行ってきた。2009年10月に利用可能となった光学衛星WorldView-2は、8バンドの光学センサ(うち可視光は6バンド)を搭載し、1.8mの解像度が得られることから、本研究ではこの衛星画像を解析に用いている。浅海域の海底地形や航路障害物の短期間での概要調査や、津波シミュレーション等に使用できる海底地形データの取得に効果的であると期待している。

本ポスター発表では、日本周辺の各地の海域でSDBの解析を実施し、既存のマルチビーム測深や航空レーザー測深による測量結果と比較検証を行った結果を紹介し、こうして得られる海底地形データの利用法について考察する。

謝辞: 本研究は(一財)日本水路協会が実施する日本財団助成事業「衛星画像を用いた浅海水深情報の把握の調査研究」の一環として行っています。

キーワード: 海底地形、浅海域、衛星画像、可視光

Keywords: bathymetry, shallow waters, satellite imagery, visible bands

