

Comprehensive Study on Atmospheric Radionuclides just after the Fukushima Accident by Analyzing used Filter-tapes of Air Monitoring Sites

*Haruo Tsuruta¹, Yasuji Oura², Mitsuru Ebihara², Toshimasa Ohara³, Yuichi Moriguchi⁴, Teruyuki Nakajima⁵

1.Remote Sensing Technology Center of Japan, 2.Tokyo Metropolitan University, 3.National Institute for Environmental Studies, 4.The University of Tokyo, 5.Japan Aerospace Exploration Agency

The first retrieval of hourly atmospheric radiocesium concentrations during March 12-23, 2011 just after the Fukushima Daiichi Nuclear Power Station (FD1NPS) accident was already published by measuring radionuclides in Suspended Particulate Matter (SPM) on the filter-tapes installed in SPM monitors with beta-ray attenuation method at 40 sites operated by local governments in the air pollution monitoring network of eastern Japan (Scientific Reports, 2014). Since then, hourly atmospheric radionuclides in SPM have been measured at around 100 SPM monitoring stations, and the dataset has been also published on a website (Journal of Nuclear and Radiochemical Sciences, 2015). In this paper, we will introduce new findings by the synthetic analysis of not only those data but also radiation dose rates at many monitoring sites, atmospheric radionuclides independently measured at several sites, and meteorological data by Japan Meteorological Agency. From the FD1NPS, 7 and 6 plumes/polluted air masses with high radionuclides were found to be transported to southern Tohoku region including the Fukushima prefecture, and to the central Kanto region including Tokyo Metropolitan Area located more than 170 km southwest of the FD1NPS, respectively. Many peaks of radiation dose rate were already observed at many monitoring stations, and a one-to-one correspondence could be identified between a peak of radiation dose and a plume/polluted air mass of radionuclides. Many case studies on the transport of plume/polluted air masses have been also made, and which clearly demonstrates that local meteorological conditions such as land and sea breezes, precipitation, and temperature inversion layers near the surface coupled with topography could greatly affect the transport pathways of radioactive materials, their maximum concentrations, and their deposition to the land surface.

Keywords: Atmospheric Cs-137, Suspended Particulate Matter, Fukushima Daiichi Nuclear Power Station, plume, Spatio-temporal variation

Investigation of Physical and Chemical Natures of Particulate Radioactive Matters Emitted from the Fukushima Nuclear Accident

*Yoshinari Abe¹, Yushin Iizawa¹, Takahiro Ono¹, Izumi Nakai¹, Yukihiro Satou², Keisuke Sueki², Yutaka Kanai³, Kouji Adachi⁴, Yasuhito Igarashi⁴

1.Department of Applied Chemistry, Tokyo University of Science, 2.Tsukuba University, 3.National Institute of Advanced Industrial Science and Technology, 4.Meteorological Research Institute

We have investigated particulate matters containing radionuclides emitted by the Fukushima Daiichi Nuclear Power Plant (FDNPP) Accident found in the environment. In this study, we summarize detailed physical and chemical natures of radioactive particles found by our investigations.

Radioactive particles were sampled from aerosols collected at two institutions in Tsukuba, the Meteorological Research Institute (MRI) and the National Institute of Advanced Industrial Science and Technology (AIST), in March 2011. The detailed sampling procedures were described elsewhere¹⁾. We also sampled radioactive particles from a sediment of an outdoor pool and soils collected in the Fukushima Prefecture. They were subjected to a scanning electron microscopy with energy-dispersive X-ray spectroscopy and a gamma-ray spectrometry. The synchrotron radiation (SR) experiments were nondestructively carried out at BL37XU, SPring-8. The SR-X-ray microbeam was used as an analytical probe for chemical composition analysis by X-ray fluorescence spectroscopy (SR- μ -XRF), chemical state analysis by X-ray absorption near edge structure analysis (SR- μ -XANES) and crystal structure analysis by X-ray diffraction (SR- μ -XRD).

Analytical results suggest a presence of three groups (Groups A, B and C) of the radioactive particles having different physical and chemical natures as described below. Group A particles are almost spherical with diameters of 1-5 μm . They were first found in aerosols collected at MRI during March 14th and 15th¹⁾ 2011. In addition to radioactive Cs, various heavy elements (Rb, Zr, Sn, Ba etc.) are detected in common to Group A. These heavy elements could be derived from fission products of the nuclear fuel. The Group A particles sometimes contain U which might originate from the fuel²⁾. In addition to heavy elements from the fuel, they consist primarily of Si, Fe and Zn associated with construction materials of the reactor. They are insoluble in water and could have a long-term impact on the environment because they are Si-based glassy materials²⁻⁴⁾. It is highly possible that they were emitted from the reactor No.2 or 3 of the FDNPP. However it is difficult to assume a single process of preparation and emission for all Group A particles because their chemical composition is inhomogeneous.

Group B particles were found in soils of northwestern region of the FDNPP. It is pointed out that radionuclides emitted from the reactor No.1 fell on this region³⁾. In contrast to Group A, the Group B particles are large (>100 μm) and non-uniform shaped. While their matrix is the Si-based glass like Group A, there is a significant difference in chemical composition between Groups A and B. Several metal elements such as Fe, Mo, Sn and U were concentrated into micro region. Results of the SR- μ -XANES/XRD indicate the presence of non-glass phase in the concentrated region.

Group C particles were sampled from aerosols collected at AIST in March 30th 2011. Although size of these particles are similar to Group A, their shape is not spherical but rugged. In contrast to Groups A/B, Si is not a major component of the Group C particles. There is clear distinction in heavy elemental composition between Group C and Groups A/B. It is expected to that these differences in physical and chemical natures among three groups of radioactive particles were derived from the difference in process of preparation and emission. Therefore this study demonstrated the fact that particulate radioactive matters were emitted from the FDNPP into the environment several times through different processes.

- 1) K. Adachi *et al.*: *Scientific Reports* 3, 2554 (2013).
- 2) Y. Abe *et al.*: *Analytical Chemistry* 87, 8521-8525 (2014).
- 3) Y. Satou *et al.*: *Housha Kagaku* 1, 27-28 (2015).
- 4) N. Yamaguchi *et al.*: *Scientific Reports* 6, 20548 (2016).

Keywords: Fukushima Nuclear Accident, Radioactive particles, Aerosol, Soil, X-ray analysis, Synchrotron radiation

Long-term assessment of airborne radio-cesium after the Fukushima nuclear accident:
re-suspension from soil and vegetation

*Mizuo Kajino^{1,2}, Masahide Ishizuka³, Yasuhito Igarashi³, Kazuyuki Kita⁴, Chisato Yoshikawa⁵, Masaru Inatsu⁶

1.Meteorological Research Institute, 2.RIKEN Advanced Institute for Computational Science, 3.Kagawa University, 4.Ibaraki University, 5.Japan Agency for Marine-Earth Science and Technology, 6.Hokkaido University

Long-term assessment of ¹³⁷Cs re-suspension from contaminated soil and vegetation due to the Fukushima nuclear accident in March 2011 and the on-going emission from the premises of the power plant has been conducted using a numerical simulation, a field experiment on the dust deflation at Namie in the restricted habitation area, and air concentration measurements in and out of the area, Namie and Tsukuba, respectively. The analysis period is one year from December 2012, about one and a half years from the accident, up to December 2013. The surface concentration of Cs-137 at Namie was high in the summer (~1 mBq/m³) and low in the winter (0.1-1 mBq/m³). The ¹³⁷Cs concentration was about one order smaller in Tsukuba (0.01-0.1 mBq/m³). The differences in the two sites are consistent between the observation and the simulation. Ishizuka et al. (2016) developed a numerical module of ¹³⁷Cs re-suspension associated with dust deflation based on the flux measurement in Namie. Using the module, the simulated ¹³⁷Cs from soil had a potential to account for the observed surface concentration in Namie in the winter, but underestimated by 1-2 orders of magnitude in the summer. The Tokyo Electric Power Company assessed the ¹³⁷Cs emission from the reactor buildings in 2013 as approximately 10⁶ Bq/h. By using the emission rate, the simulation substantially underestimated the observation by 2-3 orders of magnitude in Namie. We simulated the re-suspension from vegetation applying a seasonal variation as a function of the green fraction map. With the constant re-suspension rate of 10⁻⁷ [/h], the simulated vegetation re-suspension quantitatively accounted for the observed surface concentration together with its seasonal variation. Still, so far, the re-suspension mechanism has not been fully understood and thus further investigations for the understanding of the mechanisms and its long-term effects on the environment are needed.

Keywords: Dust deflation module, Three dimensional numerical model, Atmospheric measurement, Budget analysis

Re-suspension processes of radioactive Cs emitted by the FNDPP accident in summer and autumn –possibility of biosphere-atmosphere circulation of radioactive Cs

*Kazuyuki Kita¹, Takeshi Kinase¹, Takaaki Horiuchi¹, Shuichiro Sakamoto¹, Airi Takei¹, Hiroyuki Demizu², Yasuhito Igarashi³, Kouji Adachi³, Mizuo Kajino³, Keita Yamada⁴, Sakae Toyoda⁴, Naohiro Yoshida⁴, Kazuhiko Ninomiya⁵, Atsushi Shinohara⁵, Hiroshi Okochi⁶, Hiroko Ogata⁶, Masahide Ishizuka⁷, Teruya Maki⁸, Yoshinari Abe⁹, IZUMI NAKAI⁹, Jun Furukawa¹⁰, Yuichi Onda¹⁰

1.Faculty of Science, Ibaraki University, 2.Ibaraki University, 3.Meteorological Research Institute, 4.Tokyo Institute of Technology, 5.Osaka University, 6.Waseda University, 7.Kagawa University, 8.Kanazawa University, 9.Tokyo University of Science, 10.Tsukuba University

Radionuclides emitted in the Fukushima dai-ichi nuclear power plant (FNDPP) accident have been deposited on the soil, ocean and vegetation. Re-suspension of radioactive cesium (Cs) from the soil and vegetation to the atmosphere may be one of significant path in the diffusion of radionuclides after the accident. As well as continuous monitoring of radionuclides in the atmosphere, understanding of the re-suspension processes of radioactive Cs to the atmosphere is essential to predict its environmental influence now and future.

We are monitoring the radioactivity concentration of atmospheric Cs-134/137 at several sites at Tsushima and Yamakiya, Fukushima, where deposition amount of Cs-134/137 is relatively high.

Atmospheric suspended particle are collected with high-volume air samplers mounted at these sites, and gamma-ray emission from them were measured with Ge detector. The measured concentrations of atmospheric Cs-134/137 at Tsushima indicated their seasonal variation: they increased in spring, attained their maximum in summer, and decreased in autumn.

SEM observation of atmospheric samples showed that organic particles were dominant in summer and autumn. Fraction of carbon in the samples was positively correlated with activity concentration of Cs-134/137, indicating that these organic particles bring Cs-134/137 in the atmosphere. Chemical analysis of the atmospheric samples shows some organic components from biogenic origin were rich in their fraction of high rad Cs-134/137 activity. Bio-aerosol sampling was also conducted and its preliminary result showed that many biogenic particles such as spores and bacteria found in the samples. Comparison of activity of Cs-134/137 in rainwater collected inside and outside broad-leaf forest in Tsushima showed that Cs-134/137 activity was several times higher in rainwater in forest. Atmospheric activity was also increased during rain. These results showed that Cs-134/137 was rich on the surface of vegetation, and that it moved from vegetation to the atmosphere and soil by rain. Water soluble components and insoluble organic components were extracted from atmospheric particle samples obtained in summer and autumn with ultrapure water and H₂O₂, respectively. Simultaneously, 40-65% of Cs-134/137 was extracted with pure water and 10-40% of Cs-134/137 was extracted with H₂O₂. Although water soluble aerosols such as NaCl and sulfates were included in the samples, we suppose that Cs-134/137 extracted by water was contained in the organic particles because Na and S was much less than C in the samples. We cultured poplar shoots in the solution obtained from the extraction of atmospheric samples by pure water during 48 hours, and found that similar amount of Cs-134/137 existed in roots of poplar, its leaves and branches, and remained solution after the cultivation although major part of Cs-134/137 was adsorbed grass beads used in the cultivation. These results strongly suggested that Cs-134/137 is circulating among vegetation, soil, and atmosphere.

Keywords: Fukushima-dai'ichi Nuclear Plant Accident, Radioactive Cesium, Radioactivity in environment, Biosphere-atmosphere Circulation

Effects of radiocesium transfer from the canopy to forest floor on its accumulation in litter and soil layers.

*Hiroaki Kato¹, Yuichi Onda¹, Ayumi Kawamori¹, Keigo Hisadome²

1.Center for Research in Isotopes and Environmental Dynamics, University of Tsukuba, 2.Asia Air Survey Co. LTD.

Radiocesium deposited on forest area is initially intercepted by forest canopy and subsequently deposits on forest floor in association with rainwater and litter-fall. The intercepted radiocesium by the canopy acts as a source of secondary radioactive contamination of forest floor, however those effects on the accumulation of radiocesium to litter and soil layers have not been assessed quantitatively.

We investigated the transfer of canopy-intercepted radiocesium to the forest floor during 4 years following the Fukushima Daiichi Nuclear Power Plant accident. The cesium-137 (¹³⁷Cs) contents in throughfall, stemflow, and litterfall were monitored in two coniferous stands (plantation of Japanese cedar) and a mixed deciduous broad-leaved forest stand (Japanese oak with red pine). We also measured the gamma count rate of radiocesium at the forest floor using a portable Ge gamma-ray detector.

Total Cs-137 deposition flux from the canopy to forest floor for the mature cedar, young cedar, and the mixed broad-leaved stands were 166 kBq/m², 174 kBq/m², and 60 kBq/m², respectively. These values correspond to 38%, 40% and 13% of total atmospheric input after the accident. The spatial pattern of radiocesium at the forest floor have not changed during monitoring period, suggesting that radiocesium partitioning and leaching by the forest canopy is rather constant over time. We investigated temporal change of radiocesium inventory in litter and soil layer in the study site (Takahashi et al., 2015; NRA, 2015), which was later compared with the radiocesium depositional flux onto forest floor. The radiocesium inventory in litter layer decreased with time in all the forest sites, although the radiocesium continuously deposited on the forest floor (~ 400 Bq/m² /day). The radiocesium migration rate from the litter layer to the underlain mineral soil layer was estimated based on the analysis of the measured temporal changes of depositional flux to forest floor and inventory in litter and soil layers.

Keywords: Radiocesium, Forest, Transfer, Litter layer

How much the radiocesium fallout remain in forest surface soils?

*Eriko Ito¹, Satoru Miura¹, Michio Aoyama², Shichi Koji¹, Kenji Ono¹

1.Forestry and Forest Products Research Institute, 2.Fukushima University

Radioactive contamination in the forested area was caused by the ¹³⁷Cs discharged from Fukushima Dai-ichi Nuclear Power Plant (FDNPP) accident. To predict longterm redistribution of fallout ¹³⁷Cs, we investigated global fallout ¹³⁷Cs (¹³⁷Cs-GFO) from nuclear weapon tests in the atmosphere in the 1950s and 60s. We examined concentrations and amounts of ¹³⁷Cs-GFO of three layers of soil samples (0-5, 5-15 and 15-30 cm in depth) at 316 sites all over Japan, which were collected just before the accident. We determined ¹³⁷Cs-GFO by NaI well-type scintillation counter with its accuracy verified by measurements using a germanium detector. An average of ¹³⁷Cs-GFO inventories of forest soils in Japan was estimated to be 1.7 ± 1.4 kBq m⁻² as of Oct. 2008 with highly nation-wide spatial variation. Otherwise district meteorological observatory estimated accumulated ¹³⁷Cs-GFO deposits to be 2.4 ± 0.8 kBq m⁻². Since the number of measurement by district meteorological observatory was limited (n = 7), we have to compare these data with regards to spatial variation of the initial deposit possibly caused by climate condition. Climate factors used were precipitation normal value, vertical variation of tropopause height, and special rainfall events within atmospheric nuclear test peak period. The precipitation is positively correlated with ¹³⁷Cs-GFO deposit. The vertical variation of tropopause height affects the ¹³⁷Cs concentration of atmosphere in the troposphere. Influence of atmospheric nuclear test on the ¹³⁷Cs concentration of atmosphere peaked from Dec. 1962 to June 1963. Special rainfall events of this period might have a great impact on the ¹³⁷Cs-GFO deposit. Winter precipitation of the precipitation normal value (October to February) had been explained well the large amount of the ¹³⁷Cs-GFO distribution trend with greater accumulation in the north-western part along the Sea of Japan side. We made, you create a general mixed model using winter precipitation as a fixed effect and survey points as random effects (model 1). The tropopause altitude daily observations in 2014 were extrapolated to 0.5 degrees mesh, which turned differential data of the one-day intervals and two day intervals, and the increase in tropopause height was extracted. We added monthly frequency of the increase events as an explanatory variable to model 1 (model 2). The model 2 improved estimation accuracy in Akita pref. and Kitakyushu region underestimated in model 1 and in Okinawa pref. and Tokai region overestimated in model 1. To consider the impact of special rainfall events, the AMeDAS point monthly precipitation (1950-1964) was extrapolated into a 0.1-degree mesh data set using the spline interpolation. Precipitation from Dec. 1962 to Feb. 1963 (a heavy snowfall event) was added an explanatory variable to model 1 (model 3). The model 3 remedied the ¹³⁷Cs-GFO underestimation in some prefectures (Akita, Saga, Fukui and Nagasaki). Within the frame of the above three models, the ¹³⁷Cs accumulation in forest soils were compared to the cumulative amount of deposit measured in the district meteorological observatory. All of the three models indicated that there was no significant difference in the amount of the ¹³⁷Cs between the forest soils and the district meteorological observatories. We concluded that most of the ¹³⁷Cs-GFO had remained in forest soils during the 60 years.

Keywords: Cs, Forest soil, inventory

The situation of radioactive contamination in crops after five years of FDNPP accident

*Takuro Shinano¹, Takeshi Ota¹, Tomoko Uchida¹, Katashi Kubo¹, Hisaya Matsunami¹, Tetsuya Eguchi¹, Shigeto Fujimura¹, Toshifumi Murakami¹, Yoshihiko Takahashi¹

1.National Agriculture and Food Research Organization, Tohoku Agricultural Research Center, Agricultural Radiation Research Center

Tokyo electric power company's Fukushima Daiichi Nuclear Power plant (FDNPP) accident affected a large area of Eastern Japan by the fallout of radioactive cesium. In 2011, more than 8000 ha of agricultural field was restricted planting and the area decreased about 2000 ha by the end of 2014. Two major protocols have been applied to the agricultural field, one is decontamination of field mainly by surface stripping method but it results a huge amount of radioactive waste of soil and biomass (more than 2,000, 000 m³). The other method is applying sufficient amount of potassium to the soil before conventional fertilization. The problem is that it is not able to decide the termination of applying excess amount of potassium to the field. Furthermore, as some plant species seems to have higher transfer factor, it makes the radioactive cesium content of the harvest higher than the standard limit in food (100 Bq/kg from April 2012, in Japan). Several countermeasures have been tried to encounter these problems. In the presentation, present situation of Fukushima area which have been affected by radioactive materials and how the agriculture has been reconstructed after the FDNPP accident.

Keywords: Radioactive cesium, Decontamination of radioactive cesium, Potassium

Spatial distribution of dissolved Cs-137 at small Headwater Forested Catchment in Fukushima after Fukushima Dai-ichi Nuclear Power Plant Accident

*Sho Iwagami¹, Maki Tsujimura², Yuichi Onda¹, Aya Sakaguchi¹, Koichi Sakakibara², Ryohei Konuma², Yutaro Sato²

1.Center for Research in Isotopes and Environmental Dynamics, University of Tsukuba, 2.Faculty of Life and Environmental Sciences, University of Tsukuba. Japan

Radiocesium migration from headwater forested catchment is important perception as output from the forest which is also input to the subsequent various land use and downstream rivers after Fukushima Dai-ichi Nuclear Power Plant (FDNPP) accident. In this study, dissolved Cs-137 concentration of stream water, soil water and groundwater were measured. Observations were conducted at headwater catchment in Yamakiya district, located 35 km northwest of FDNPP from April 2014 to November 2015. Stream water discharge was monitored and stream water samples were taken at main channel and sub channel. Stream water discharge was monitored by combination of parshall flume and v-notch weir. Stream water was sampled manually at steady state condition in 3-4 month interval and also intense few hours interval sampling were conducted during rainfall events using automated water sampler. Around the sub channel, it is found that there is a regularly saturated area at the bottom of the slope, temporary saturated area which saturate during the rainy season in summer and regularly dry area. 6 interval cameras were installed to monitor the changing situation of saturated area. Suction lysimeters were installed at three areas (regularly saturated area, temporary saturated area and dry area) for sampling soil water in depth of 0.1 m and 0.3 m. Boreholes were installed at three points along the sub channel. Three boreholes with depth of 3 m, 5 m and 10 m were installed at temporary saturated area, 20 m upstream of sub channel weir. Another three boreholes with depth of 3 m, 5 m and 10 m were installed at dry area, 40 m upstream of sub channel weir. And a borehole with depth of 20 m was installed at ridge of sub catchment, 52 m upstream of sub channel weir. Groundwater was sampled by electrically powered pump and groundwater level was monitored. Also suction-free lysimeter was installed at temporary saturated area for sampling the near surface subsurface water. Soil water samples were collected as much as collected in flask. Stream water and groundwater samples were collected for 40 L each. All the water samples were filtered through 0.45 μm pore-size membrane. Water samples with less than few L were concentrated by evaporative concentration. Water samples with more than 40 L were concentrated using the ammonium molybdophosphate (AMP)/Cs compound method. The Cs-137 concentration was determined using Gamma-ray spectrometry with a germanium semiconductor detector. Spatial distribution of dissolved Cs-137 concentration in the slope was obtained and the source of Cs-137 concentration in stream water was examined. The Cs-137 concentration in groundwater showed low value of around 0.001 Bq/L. The Cs-137 concentration of soil water showed 0.01-0.1 Bq/L. And Cs-137 concentrations of stream water were in order of 0.01-0.1 Bq/L at steady state condition. Also Cs-137 concentrations in stream water showed temporary increase during rainfall event. The source of dissolved Cs-137 was suggested to be shallow soil water under saturated condition or leaching from the litter might be affecting.

Keywords: Dissolved Cs-137, FDNPP, stream water, soil water, groundwater

Slope-scale Cs-137 wash-off processes estimated with erosion plot observations and laser-scanning

*Yoshifumi Wakiyama¹, Ryo Manome², Yuichi Onda³, Kazuya Yoshimura⁴

1.Institute of Environmental Radioactivity, Fukushima University, 2.Graduate School of Life and Environmental Sciences, University of Tsukuba, 3.Center for Researches in Isotopes and Environmental Dynamics, University of Tsukuba, 4.Sector of Fukushima Research and Development, Japan Atomic Energy Agency

To predict the fate of Cs-137 deposited on terrestrial due to the accidents of nuclear power plants, understanding of Cs-137 redistribution associated with sediment dynamics is important. Previous studies quantified slope-scale Cs-137 wash-off from various land uses using soil erosion plots and the results were useful for parameterizations of large-scale predictions. However, temporal trends of Cs-137 wash-off has hardly been elucidated because of lack of related long-term observations. It adds uncertainty in predictions of the fate of Cs-137. Previous studies relating to Cs-137 redistribution indicated that Cs-137 concentration of sediments and hence its redistributions depend on erosional processes on slopes, such as rill formation and deposition. Elucidating relation between soil erosion and Cs-137 wash-off processes will improve our understanding of fate of Cs-137. This study presents a Cs-137 wash-off observation and a series of morphological survey on a soil erosion plot established in area affected by the accident of Fukushima Dai-ichi Nuclear Power Plant. Based on these results, we discussed the seasonality of slope scale Cs-137 wash-off. A soil erosion plot with length of 22.13 m and width of 5 m was established on a tobacco farmland in Yamakiya district of Kawamata town on July 2011. The initial Cs-137 deposition was 370 kBq m⁻² and the slope gradient was 4.4 degree on the plot. Eroded sediments were collected every one month in winter and every two weeks in other season until August of 2014. Collected sediments were dried, weighed and then served for Cs-137 measurements. Precipitation and surface runoff were also monitored. Surface soil was scanned for ten times using a 3D laser profiler during the observation. Obtained scan data were converted into 1 cm mesh DEM and the differences of the elevation were calculated by subtracting elevation values from those obtained in the previous scanned. During the observation, total amount of eroded sediment was 9.8 kg/m² and total Cs-137 wash-off was 107 kBq/m². Mean concentration of Cs-137 in eroded sediment was 13 kBq/kg with 38 % of variation coefficient. A decreasing trend in temporal variations in Cs-137 concentration was found but not significant. However, Cs-137 concentration gradually decrease from spring to autumn and it recovered as high as increased again as high as those after winter. Morphology of surface soil showed seasonality. Rill was expanded from spring to summer. There was no significant change from summer to autumn. Soil surface was elevated from winter to spring. Averaged difference of elevation was negatively correlated with amount of eroded sediment. No significant correlation was found between the average difference of elevation and Cs-137 concentration of eroded sediment. However, average difference of elevation during warm season (from spring to autumn) was negatively correlated with Cs-137 concentration of both coarse and fine sediment, whereas the positive correlation was found in winter (from autumn to spring). These relationships suggest the difference of erosion and Cs-137 processes between winter and other seasons. In winter, freezing and thawing cycles provided sediments of high Cs-137 concentration and subsequent snowmelt and rainfall could wash off the detachable sediment. In other seasons, rill was a dominant pathway for transporting sediments with relatively low Cs-137 concentration whereas intensive rainfall event expanded the contributing area of sediment with relatively high Cs-137 concentration. The results of this study suggest that Cs-137 wash-off shows seasonality and

consequently long-term observations will be necessary for more accurate predictions of Cs-137 fate.

Keywords: Laser scanning, Soil erosion, Cs-137

Landscape Controls Fate of Fukushima Contamination

*Yuichi Onda¹, Keisuke Taniguchi², Kazuya Yoshimura³, Yoshifumi Wakiyama⁴

1.Center for Research on Isotopes and Environmental Dynamics, University of Tsukuba, 2.Centre for Environmental Creation, Fukushima Prefecture, 3.Japan Atomic Energy Agency, 4.Institute of Environmental Radioactivity, Fukushima University

The Fukushima Daiichi Nuclear Power Plant accident has released massive amount of radiocesium into the terrestrial environment, and the radiocesium have been moved through rainfall and erosional processes. In Japan, intensive field monitoring campaign has been started and continued for 4 years. The detailed monitoring of concentration of radiocesium and their flux, which can be applicable for the fate and flux of the radionuclide flow in humid environment especially controlled by the landuses of upstream.

Keywords: Cs-137, Fukushima, watershed

Uranium isotope ratio in Fukushima soil samples

*Asako Takamasa¹, Sarata Kumar Sahoo¹, Shun'ichi Nakai², Hideki Arae¹

1.National Institute of Radiological Sciences, 2.Earthquake Research Institute

There were huge amounts of radionuclides such as fission products released into atmosphere due to accident of Fukushima Daiichi nuclear power plant (FDNPP). A few studies have been reported about actinide elements released from FDNPP accident as fingerprint of isotope ratio using accelerator mass spectrometry (AMS). Levels of actinides were at much less concentration than ¹³⁴Cs, ¹³⁷Cs and ⁹⁰Sr. However, we need to consider the influence of alpha ray particles on a long-term contamination in environment. We have focused on ²³⁶U isotope, and its measurement using a thermal ionization mass spectrometry (TIMS), which may be used as an index of a nuclear accident. We measured highly precise uranium isotope ratios in the soil samples from Fukushima prefecture with high Cs concentration using Isotopx Ltd. Phoenix TIMS.

We also measured Kobe and Okinawa soil samples before the accident as Global Fallout and geological standard sample as JSd-2 and NIST 4350b. Chernobyl and Kosovo samples were measured to notice artificial radioactive materials.

Soil samples were decomposed by a microwave (ETHOS one) digestion method with mixed acids after ashing. Uranium fraction from the dissolved sample was chemically separated by UTEVA-UTEVA resin chromatography to minimize interferences of Fe and Pb prior to isotope ratio measurement using TIMS and MC-ICP-MS.

Results of ²³⁵U/²³⁸U and ²³⁴U/²³⁸U ratio by TIMS and MC-ICP-MS couldn't reveal any significant difference between Fukushima soil samples and Global Fallout samples.

²³⁶U/²³⁸U detection limit of TIMS were considered by a standard solution from U ore and could be considered that was not under the influence of Global Fallout. We could measure ²³⁶U/²³⁸U ratio in U ore samples from 10^{-10} ~ 1.5×10^{-9} range. The yield for JSd-2 and NIST 4350b were noticed to be 4.2 - 7.8×10^{-8} and Kobe and Okinawa as an index of global atomic fallout were 6.5 - 9.8×10^{-9} . The detailed results will be presented.

Keywords: Fukushima soil sample, Uranium isotope, TIMS, ²³⁶U

Development of meta-database of radiation and radioactivity monitoring data for Fukushima Dai-ichi reactor accident

*Yoshitaka Itow¹

1. Institute for Space-Environmental Research, Nagoya University

Great East Japan Earthquake happened 11 March 2011 caused Fukushima Dai-ichi reactor accident resulting significant radiation contamination to the environment. There have been long standing efforts for assessment of early exposure dose of the resident by environmental simulations together with various radiation monitoring data during the sequence. We report the meta-data archive system for the radiation/radioactivity monitoring for Fukushima Dai-ichi reactor accident. This idea will serve meta-database search of various radiation monitoring data and archiving.

Keywords: Radiation, Meta-database, Fukushima Dai-ichi reactor accident

Survey on riverine Cs-137 transport in Fukushima prefecture

*Keisuke Taniguchi¹, Takayuki KURAMOTO¹, Yuichi Onda²

1.Centre for Environmental Creation Fukushima Prefecture, 2.University of Tsukuba

In Fukushima prefecture, river water is widely used for city water, agricultural water, and other purposes. Although the radioactivity in river water already declined enough to drink it, the activity and flux of radiocaesium should be observed in order to evaluate effects on the air dose rate due to deposition while flood events and transfer from agricultural products, wild animals and plants via ecosystem.

Suspended sediments samples were collected at 30 sites in Abukuma river system and Hamadori districts, and the discharge and turbidity were measured at the same sites. And then, particulate radiocaesium activities and fluxes were calculated.

Although the declining tendency of the radioactivity of particulate Cs-137 has been continuing, the declining rate slowed down after one year from the accident. In observation sites on Kuchibuto tributary, in which decontamination works were conducted by Ministry of the Environment, the radioactivity became lower after spring in 2014. The decline was probably caused by the decontamination of agricultural land (After stripping surface soil, soil without contamination was brought in and added).

In September 2015, a heavy rainfall event occurred. In lower reach of Abukuma River, the water discharge was at almost the same level as the event caused by typhoon Roke in September 2011. However, the particulate Cs-137 flux was one order to magnitude lower than that at September 2011, because the Cs-137 activity concentration decreased.

Keywords: Radiocaesium, River

Relationship between radiocesium interception potential (RIP) and other parameters such as cation exchange capacity, organic matter content, particle size, and mineral composition

*Yuichi Kurihara¹, Yoshio Takahashi¹, Fan Qiaohui¹, Keisuke Taniguchi², Hikaru Miura¹, Yuichi Onda³

1.Department of Earth and Planetary Science, Graduate School of Science, The university of Tokyo, 2.Centre for Environmental Creation Fukushima Prefecture, 3.Center for Research on Isotopes and Environmental Dynamics, University of Tsukuba

The solid-water distribution of radiocesium can be expressed by the distribution coefficient (Kd), but the Kd value is conditional depending on the condition of the solution such as major ion composition and concentration of cesium in the aqueous phase. On the other hand, radiocesium interception potential (RIP) is primarily important to show the solid-water distribution of radiocesium, because of the low total concentration of cesium in aqueous environment, where frayed-edge site is not saturated by the cesium.

In this study, the effects of cation exchange capacity (CEC), organic matter content, particle size, and mineral composition on RIP were discussed. Based on the laboratory studies using suspended sediment (SS) samples collected from various rivers in Fukushima area, we found the results from (i) to (iv):

(i) RIP is positively correlated with CEC, but some RIP values at higher CEC region were lower than those at lower CEC region, because the latter values were obtained from the SS with high organic content.

(ii) RIP is positively correlated with surface area, or negatively correlated with average particle size of SS samples. However, some RIP values with large surface areas were out of the trend written above, possibly because the smaller particles did not contain weathered mica that can strongly adsorb cesium.

(iii) However, the correlation of RIP against mineral composition indicated by the mica/quartz ratio is not very clear, suggesting that the role of bulk mineral content is not very clear. It is possible that the capacity needed for the cesium in water is not that large, which suggests that a small amount of mica-type mineral is sufficient to show the high affinity for cesium.

(iv) Finally, there was clear negative correlation between RIP and the organic content. This effect is explained by the coating of minerals by humic materials, which inhibits adsorption of cesium on the SS samples, as suggested in our previous study (Fan et al., 2014).

We found that the four parameters more or less affect the RIP value. Thus, multiple regression equation is needed to take into account the effects of the four parameters to obtain empirically the RIP value in each environment. We will give the results of the multiple regression equation in the presentation, by which we can discuss important parameters that control adsorption behavior of radiocesium in Fukushima area.

Keywords: Fukushima Dai-ichi nuclear power plant, RIP, cesium, cation exchange capacity

Source Identification and Simulation of Radiocesium Infiltration into Separate Sewer System after Nuclear Power Plant Accident

*Mochamad Adhiraga Pratama¹, Minoru Yoneda¹, Yoko Shimada¹, Yasuto Matsui¹, Yosuke Yamashiki

1.Department of Environmental Engineering, Kyoto University

Following the Fukushima Dai-ichi nuclear power plant accident, numerous amount of radiocesium was emitted and infiltrates separate sewer system in the surrounding urban areas. To simulate the infiltration of radiocesium into separate sewer, we developed the Improved Model Radionuclide Migration in Urban Environments and Drainage Systems (iMUD) bases on model Radionuclide Migration in Urban Environments and Drainage Systems (MUD), which was only applicable for combined sewer system. In this study, we attempted to predict the concentration of radiocesium in the final sludge of wastewater treatment plant (WWTP).

iMUD is a multi compartment model, consits of urban and WWTP sub-model and divides the surface of urban area into five components according to the type of surface layer (roof, paved, soil, tree, wall). Firstly we identified the mechanism of radiocesium infiltration, which after several analysis, the mechanisms are Rainfall-Derived Inflow and Infiltration (RDII) and Human excretion. There after, the model was applied on the two largest urban areas in Fukushima Prefecture, Fukushima and Koriyama. Finally, we compared the predicted values of concentration of radiocesium in the sludge with the three years obeserved data in order to validate the model.

Based on the calculation of Nash Efficiency Coefficient (n), the model showed a satisfactory result, which for Fukushima WWTP case n value of 0.85, and for Koriyama WWTP case, n value of 0.84 were achieved. In addition, R^2 value of 0.85 and 0.86 were achieved for Fukushima and Koriyama respectively. We predicted that the sludge containing radiocesium reaches the standard limit after 3 years for Fukushima and 4 years for Koriyama.

Keywords: radiocesium, separate sewer system, simulation

Fukushima-derived radiocesium in the North Pacific subarctic region and Arctic Ocean in summer 2014

*Yuichiro Kumamoto¹, Michio Aoyama², Yasunori Hamajima³, Shigeto Nishino¹, Akihiko Murata¹, Takashi Kikuchi¹

1.Japan Agency for Marine-Earth Science and Technology, 2.Fukushima University, 3.Kanazawa University

Accident of Fukushima-Dai-ichi Nuclear Power Plant (FNPP1) on 11 March 2011 resulted in a large amount release of radiocesium (^{134}Cs and ^{137}Cs) into the North Pacific Ocean. Oceanographic observations have revealed that the Fukushima-derived radiocesium in surface seawater is transported eastward along the North Pacific Current. However, penetration of the radiocesium into ocean interior is not understood well. From July to October 2014 we measured vertical profiles of radiocesium from surface to 800 m depth in seawater from the North Pacific subarctic region and Arctic Ocean. The seawater samples (20-40 liter) were collected using a bucket or a pump for surface water and Niskin Sampler for deeper water. Some of them were filtrated and all the samples were acidified with nitric acid on board. In laboratories on shore, radiocesium in the sampled seawater was concentrated onto ammonium phosphomolybdate (AMP). Radiocesium in the AMP was measured using ultra-low-background gamma-ray detectors in Low Level Radioactivity Laboratory, Kanazawa University. Uncertainty of the radiocesium measurement was estimated to be about 8 %. In the Arctic Ocean, about 1.5 and 3.5 Bq/m³ of ^{137}Cs were observed in surface layer from sea surface to about 200 m depth and subsurface from about 200 m to 800 m depth, respectively. Because these concentrations of ^{137}Cs were observed in the Arctic Ocean before the FNPP1 accident, these could be derived from nuclear weapon testing in the atmosphere mainly in the 1950-60s and release from nuclear fuel reprocessing plants mainly in the 1980-90s. On the other hand, Fukushima-derived ^{134}Cs was detected only at 150 m depth although the concentration was very low (0.07 Bq/m³). The depth of 150 m corresponded to a salinity minimum layer originated from seawater from the North Pacific. Fukushima-derived ^{134}Cs was not detected in the salinity minimum layer in 2012 and 2013. On the other hand, the ^{134}Cs was observed in surface seawater (less than 0.3 Bq/m³) in the Bering Sea in 2012, 2013, and 2014. These results imply that transportation of ^{134}Cs from the Bering Sea to the Arctic Ocean takes about 3.5 year after the FNPP1 accident. At stations along 47°N in the subarctic region, activity concentration of ^{137}Cs in surface seawater was lower in the west (less than 2 Bq/m³) than that in the east centered about 150°W (less than 8 Bq/m³). The concentration of ^{137}Cs decreased with depth and was about 0.2 Bq/m³ at 800 m depth both in the west and east. Fukushima-derived ^{134}Cs was detected in seawater from shallower layer than 200 m depth, surface mixed layer, suggesting that ^{137}Cs in layer deeper than 200 m depth was derived not from the FNPP1 accident but the nuclear weapon testing. Activity concentration of Fukushima-derived ^{134}Cs in the surface mixed layer was lower in the west (less than 0.3 Bq/m³) than that in the east centered about 150°W (less than 2.5 Bq/m³). The ^{134}Cs -rich surface water was observed at the international-date-line approximately in summer 2012. These results suggest that ^{134}Cs deposited in coastal area near Japan and directly-discharged from FNPP1 had been transported eastward in the surface mixed layer to around 180° by summer 2012 and subsequently around 150°W by summer 2014. This work partially supported by Grant-in-Aid for Scientific Research on Innovative Areas, the Ministry of Education, Culture, Sports, Science and Technology Japan (KAKENHI), No. #24110005.

Keywords: Fukushima-Dai-ichi Nuclear Power Plant, Radiocesium, North Pacific subarctic region

Factors controlling radiocaesium distributions in the western North Pacific in 2011-2013

*Miho Fukuda¹, Tatsuo Aono¹, Shinnosuke Yamazaki¹, Makio C Honda², Satoshi Yoshida¹, Hajime Kawakami², Toshiro Saino²

1.National Institute of Radiological Sciences, 2.Japan Agency for Marine Earth Science and Technology

The 2011 off the Pacific coast of Tohoku Earthquake and subsequent tsunami on 11 March 2011 caused damages that led to the accident at TEPCO's Fukushima Dai-ichi Nuclear Power Station (FDNPS). Large amounts of radionuclides were dispersed by hydrogen explosions, and radionuclides also leaked from the FDNPS into the terrestrial and marine environments. In the approximately 5 years that have passed since the accident, radiocaesium activities in seawater in the Fukushima coastal area have decreased, but are about 10 times higher than before the accident [1]. There is some controversy about factors affecting radiocaesium in the open ocean, particularly in subarctic area. To improve the accuracy of the diffusion simulation predictions in the ocean, more data are required from many regions regarding temporal changes. This study aimed at elucidating distribution and behavior of dissolved radiocaesium in seawater collected from the western North Pacific during the four sampling periods in 2011- 2013 (Period I; 14 April to 5 May 2011, Period II; 27 June to 4 August 2011, Period III; 4 June to 12 July 2012 and Period IV; 9 July to 29 July 2013). Collected seawater samples were filtered through a 0.2- μm pore size filter and was concentrated by means of improved ammonium phosphomolybdate (AMP) method [2]. In upper-layer seawater (water depth 0-10 m), the dissolved ^{137}Cs activities were relatively high off the Fukushima Prefecture in Periods I and II. In Periods III and IV, the activities at most of monitoring stations were same order. The activity profile patterns at most of stations decreased with increasing water depth were constant at all depth. The activity in middle-layer (water depth 100 or 200 m) was relatively higher than those in upper-layer at KEO in Period II and at JKEO in Period III. At S1, the activity profile patterns were its maximum layer at water depth 100-400 m in Periods III and IV. It seems that maximum layers of ^{137}Cs activity at S1 and KEO had happened because upper-layer seawater including radiocaesium had subducted more deep associated with formation of the North Pacific subtropical mode water. In upper-layer, integrated ^{137}Cs amounts in 35° N-40° N and 140° E-150° E, which zone is located just eastward from the Fukushima Prefecture, were highest compared to those in another zones until Periods II and accounted for more than 50 % of the total ^{137}Cs amounts of each sampling periods. In Periods III and IV, the amounts in divided all zones were small order. It is possible that the amount distributions influenced on several factors such as the location and strength of Kuroshio and Oyashio current and semipermanent eddy.

[1] Nuclear Regulation Authority, (2015) Environmental radioactivity database <http://search.kankyo-hoshano.go.jp/servlet/search.top>, [2] Aoyama and Hirose (2008) Radiometric determination of anthropogenic radionuclides in seawater, in: Analysis of Environmental Radionuclide, In P. P. Pavel (Ed.), Radioactivity in the Environment (pp. 137-162). Hungary: Elsevier. This work was partially supported by Grants-in-Aid for Scientific Research on Innovative Areas, the Ministry of Education Culture, Sports, Science and Technology (MEXT), Japan (nos. 24110004, 24110005) and Research and Development to Radiological Sciences in Fukushima Prefecture.

Keywords: Fukushima Dai-ichi Nuclear Power Station accident, dissolved radiocaesium, western North Pacific

Behaviour of oceanic ^{137}Cs from the Fukushima Dai-ichi Nuclear Power Plant for four and a half years

*Daisuke Tsumune¹, Takaki Tsubono¹, Kazuhiro Misumi¹, Yutaka Tateda¹, Michio Aoyama²

1. Central Research Institute of Electric Power Industry, 2. Fukushima University Institute of Environmental Radioactivity

A series of accidents at the Fukushima Dai-ichi Nuclear Power Plant (1F NPP) following the earthquake and tsunami of 11 March 2011 resulted in the release of radioactive materials to the ocean by two major pathways, direct release from the accident site and atmospheric deposition. Additional release pathways by river input and runoff from 1F NPP site with precipitation and were also effective for coastal zone in the specific periods before starting direct release on March 26 2011.

We reconstructed spatiotemporal variability of ^{137}Cs activity in the regional ocean for four and a half years by numerical models, such as a regional scale (horizontal resolution is about 1 km) and the North Pacific scale (horizontal resolution is about 10 km) oceanic dispersion models, an atmospheric transport model and river runoff model.

Direct release rate of ^{137}Cs were estimated for four and a half years after the accident by comparing simulated results and observed activities very close to the site. The estimated total amounts of directly release was 3.7 ± 0.7 PBq. Directly release rate of ^{137}Cs was the order of magnitude of 10^{14} Bq/day and decreased exponentially with time to be the order of magnitude of 10^9 Bq/day by the end of September 2015. Estimated direct release rate have exponentially reduced with constant rate since November 2011. Apparent half-life of direct release rate was estimated to be 346 days. Simulated ^{137}Cs activities attributable to direct release were in good agreement with observed activities, a result that implies the estimated direct release rate was reasonable, while there is no observed data of ^{137}Cs activity in the ocean from 11 to 21 March 2011. Observed data of marine biota should reflect the history of ^{137}Cs activity in this early period. The comparisons between simulated ^{137}Cs activity of marine biota by a dynamic biological compartment and observed data also suggest that simulated ^{137}Cs activity other than attributable to direct release was underestimated in this early period. We reconstructed the history of ^{137}Cs activity in this early period with direct release, atmospheric deposition, river input, runoff from 1F NPP site with precipitation. River runoff process is still unknown in the early period because there were no observed data. We assumed that 10% of deposited ^{137}Cs on each river basin run off thorough rivers along the Miyagi, Fukushima and Ibaraki coasts. The simulation with overestimated river runoff rate (10 %) suggests that the river flux of ^{137}Cs to the ocean was not effective to the ^{137}Cs activity in the ocean in this early period. We estimated the release rate of ^{137}Cs with rain water runoff from the 1F NPP site from the observed ^{137}Cs activity before 26 March 2011 and precipitation data close to 1F NPP site. Simulation with additional release of ^{137}Cs from the 1F NPP site suggests that additional release from 1F NPP site was effective to the ^{137}Cs activity adjacent to 1F NPP and 2F NPP. Simulated atmospheric depositions of ^{137}Cs on a regional ocean by 9 regional atmospheric transport models still have huge uncertainties. It is also important to estimate the deposition process on a regional ocean to understand contamination process of marine biota.

In the North Pacific scale, ^{137}Cs activity in the intermediate water increased due to the Subtropical Mode Water (STMW) formation. ^{137}Cs is a useful tracer to detect the STMW formation. Not only the direct release but also the atmospheric deposition are essential for the distribution of ^{137}Cs activity in the North Pacific. Five-member, ensemble simulation with high resolution can represent the increase of ^{137}Cs activity in the intermediate water.

Keywords: Fukushima Dai-ichi Nuclear Power Plant Accident, Oceanic dispersion, Cesium-137, Regional Ocean Model, Ocean General Circulation Model

Radioactive particles in residual soil after strong acid leaching

*Yukihiko Satou¹, Keisuke Sueki¹, Kimikazu Sasa¹, Kouki Kokubun², Kouji Adachi³, Yasuhito Igarashi³

1.Faculty of Pure and Applied Sciences, University of Tsukuba, 2.Centre for Environmental Creation Fukushima Prefecture, 3.Meteorological Research Institute

In March 2011, the Fukushima Dai-ichi Nuclear Power Plant (F1NPP) accident has been occurred, and consequently large amount of radionuclides discharged to the environment. Especially Cesium-137 (¹³⁷Cs), which is radioisotope of cesium and it has 30 a of half-life, were remained in the environment for a long time. Understanding of the physical and chemical properties of the emitted radioactive cesium is important to accurately evaluate the possible human health impacts and to assess the long-term distributions of these radionuclides after deposition in residential areas, agricultural fields, mountains, and aquatic environments. Especially, the chemical form in soils is interesting at the point of decontamination of residence area and reconstruction of agricultural field. This study also analyzed chemical form of radiocesium in the soil collected at Motomiya city.

Soil sample was collected at the Motomiya city, Fukushima Prefecture, located of 40 km west from the F1NPP in October 2012. Concentration of ¹³⁷Cs in soil was 8 kBq/kg (In March 11, 2011).

Sequential extraction was performed (Five fraction was obtained, 1) water dissolve, 2) cation exchangeable, 3) organic form, 4) concentrated acid leachable, 5) residue.), and approximately 50% of ¹³⁷Cs was remained in soil. Several number of spot type contamination were detected with autoradiography using an imaging plate. A spot was isolated from soil, and it was spherical particle. Constitution elements are Fe, Zn, Si, O, as well as Cs, which was detected using an energy dispersive X-ray spectrometry. These features are very similar to Cs-bearing radioactive particles isolated from air dust filter collected at the Tsukuba city by Adachi et al. (2013) and Abe et al. (2014). Therefore the particles distributed widely. In addition, dominant composition of particle is silicate of approximately 80 %. This result is consistent with Satou et al. (2015) and Yamaguchi et al. (2016). A silicate usually indicates acid resistance. These results suggested that the particulate form radiocesium is stable in environment, and it could be not remove by acid chemical treatment.

Keywords: Radioactive particle, Silicate compound, Acid resistance

Long-term prediction models of atmospheric concentration of Cs-137 and their comparison with AIC

*Shoki Konishi¹, Yuko Hatano¹

1.University of Tsukuba

In the Fukushima Daiichi nuclear power plant accident, a large amount of radioactive nuclides were released. Cesium-137 is one of the most significant radionuclides which were released in large amount to the atmosphere and has a half-life of thirty years; the Cs-137 pollutes the atmosphere for a long term. Some models which can predict the concentration of Cs-137 for long term have been proposed.

In this study, first, I evaluate the seasonal variation in the concentration change of Cs-137. Analyzing the residuals between the measured data and the models, we reveal periodic fluctuations with the period of one year. We found that the changes of the concentration is in the form the sine curve of the one year period, which reaches at the maximum value in the summer and minimum in the winter. Adding such a sine curve in long-term models, we propose a new model considering seasonal variation. Second, we compare the accuracy of the models. Some models to reproduce the atmospheric concentration of Cs-137 have been proposed, but they are not evaluated quantitatively with regard to which model is the best. We evaluate some models using Akaike's Information Criterion(AIC). AIC evaluate some models on consistency and number of free parameters. At first, we evaluate which is good, considering seasonal variation or not. As a result, model considering seasonal variation is better. Second, I evaluate some proposed models. As a result, the best model is $C(t)=A\exp(-\lambda_{\text{decay}}t)t^{-\alpha}$ (then $C(t)$ is concentration of Cs-137, λ_{decay} is decay constant of Cs-137, A and α are free parameter). This is conclusion that $C(t)=A\exp(-\lambda_{\text{decay}}t)t^{-\alpha}$ and considering seasonal variation is the best model.

Keywords: activity concentration, aerosol, resuspension

Resuspension processes of Fukushima radioCs: Could fungal spore play a significant role?

*Yasuhito Igarashi¹, Kazuyuki Kita², Teruya Maki³, Chisato Takenaka⁴, Takeshi Kinase², Kouji Adachi¹, Mizuo Kajino¹, Tsuyoshi Sekiyama¹, Yuji Zaizen¹, Masahide Ishizuka⁵, Kazuhiko Ninomiya⁶, Hiroshi Okochi⁷, Atsuyuki Sorimachi⁸

1.Meteorological Research Institute, 2.Ibaraki University, 3.Kanazawa University, 4.Nagoya University, 5.Kagawa University, 6.Osaka University, 7.Waseda University, 8.Fukushima Medical University

The authors have studied for atmospheric re-suspension of the radioactive cesium (Cs) originated from the Fukushima Dai-ichi Nuclear Power Plant (FDNPP) accident in contaminated area by the accident to assess the atmospheric effect of the accident. As a result the authors came to know that 1) in summertime, Cs concentration increases (see Fig. 1) in such typical Japanese village-vicinity mountain area and that 2) radioactive particles in summer seem to be dust from its appearance and their optical micrograph, but on the contrary, we realized that most has biological origin from electron-microscopic view (Fig. 2). Taking into consideration the fact that true fungi concentrate Cs due to misidentifying Cs as potassium, we can assume that the fungal spore as the major contributing factor for resuspension.

Supposed that only fungal spore can carry ¹³⁷Cs, estimating the ¹³⁷Cs amount per spore under various assumptions; the value would be 5×10^{-10} - 3×10^{-7} Bq/fungal spore particle, in that case, the spore needs to be released at a rate of 9×10^3 - 5×10^5 particle/m²/sec from forests to support the present ¹³⁷Cs in the air. This value is surprisingly 1-3 digits larger than the forest maximum value (387 particle/m²/sec) of the fungal spore emission rate given in Table 2, Sesartic & Dallafior (2011), suggesting a potentially large environmental impacts of the spore. Actually, number concentration of bio-aerosol would be reaching 5 - 8×10^5 particle/m³ in our preliminary observation during past summer in 2015 in a forest in Fukushima Prefecture, revealing that more bio-aerosol release could be occurring from Japanese forests than our expectation. Further, based on this postulation that fungal spore would be a major source of atmospheric Cs especially during summer, ¹³⁷Cs concentration would be ranging 2.5×10^{-4} - 0.15 Bq/m³ air in the forest, which almost fits to the actual ¹³⁷Cs concentration level shown in Fig. 1.

Keywords: the Fukushima Daiichi Nuclear Power Plant accident, Radioactive cesium, Resuspension, Bioaerosol, Dust

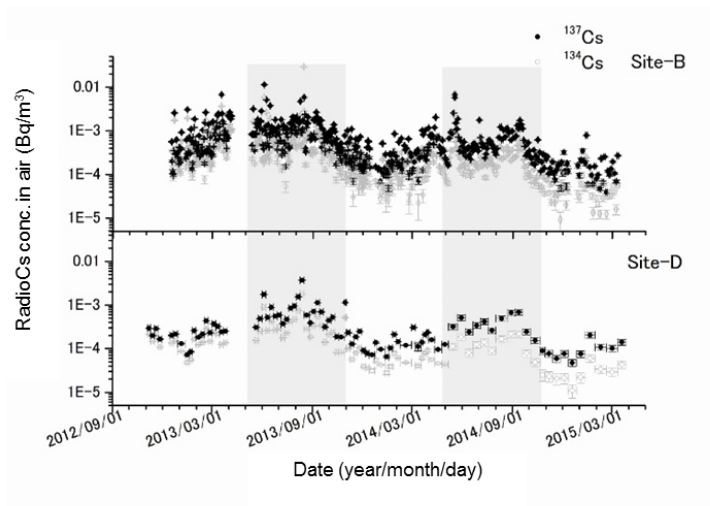


Fig. 1: Temporal trends in atmospheric radioCs concentrations in contaminated area in Fukushima Prefecture during fall of 2012 to spring of 2015 Shaded: summer season

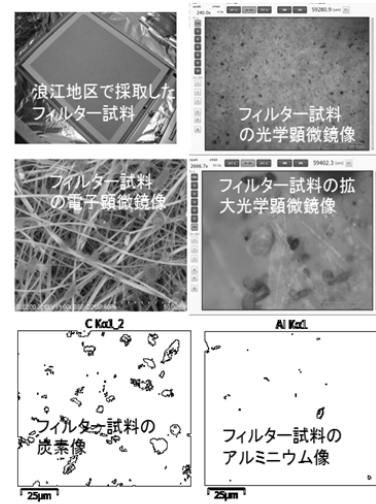


Fig. 2: Photos of a filter specimen sampled in summer; optical microscopic views, and electron microscopic views The bottom panel shows carbon distribution (left) and aluminum one (right).

Correlation-study about the ambient dose rate and the weather conditions

*Masato Furuya¹, Yuko Hatano¹, Tomoo Aoyama², Yasuhito Igarashi³, Kazuyuki Kita⁴, Masahide Ishizuka⁵

1.Department of Risk Engineering, Faculty of Systems and Information Engineering, University of Tsukuba, 2.Center for Research in Isotopes and Environmental Dynamics, University of Tsukuba, 3.Meteorological Research Institute, 4.College of Science, Ibaraki University, 5.Faculty of Engineering, Kagawa University

The long-term radiation risks are believed to be heavily affected by the resuspension process. We therefore focus on the surface-atmosphere exchange process of released radioactive materials in this study. Radioactive materials were deposited on the soil and float in the air, and such complicated process are influenced by the weather conditions deeply. We need to reveal the correlation between the weather conditions and the ambient dose rate.

In this study, we study the correlation between the weather conditions and the ambient dose rate with the correction of the decrease due to the radioactive decay. We found that there is a negative correlation between the ambient dose rate and the soil water content by the correlation coefficient. Using this result, we reconstruct the ambient dose rate from the weather conditions by the multiple regression analysis and found that the reconstructed data agree with the observation very well. Using Kalman filter, which can be sequentially updates the state estimate, we obtained such a good agreement.

Keywords: Fukushima Accident, Radioactive nuclides, Karman Filter

Can we estimate vertical profile of radiation caused by deposited radioactive materials from atmospheric electric field measurement?

Masashi Kamogawa¹, *Yuko Suzuki¹, Yoshihisa Kimura¹

1.Department of Physics, Tokyo Gakugei University

The 2011 off the Pacific coast of Tohoku Earthquake generated large tsunami resulting in serious damage to the Fukushima Daiichi nuclear power plant (FDNPP). The damage caused radioactive materials be discharged to the environment. After the discharge, transported radioactive materials were deposited around east Japan. The radioactive deposition modulated atmospheric electricity such as the decrease of atmospheric electric field (AEF) for several months. From the ground-based observations of AEF, detectable modulated area on the ground was estimated only within a few hundred kilometers from FDNPP. In addition, we estimate the modulated height above the ground by applying the observed data to a global electric circuit model, so that the modulated height was up to approximately 1 km, which agrees with aerial radiation monitoring. Therefore, the ground-based AEF observation might contribute to estimating the vertical profile of radiation.

Keywords: Radiation, Atmospheric Electric Field, Conductivity

Stochastic modeling of the migration of Cs-137 in soil considering a power law tailing in space

*Hiroki OKA¹, Yuko Hatano¹

1.Department of Risk Engineering, Graduate school of Systems and Information Engineering, University of Tsukuba

We develop a theoretical model to reproduce the measured data of Cs-137 in the soil due to the Fukushima Daiichi NPP accident. The Advection Diffusion Equation (ADE) is proposed by He and Walling (1996) and has been used to predict migration in soil. This model shows Gaussian diffusion process called normal diffusion. However, We found that the concentration of Cs-137 has a discrepancy from ADE model, specifically in a deep part because the depth profiles have a power law tailing. The diffusion comes off ADE is called anomalous diffusion. Therefore, we improved ADE model in the following aspect. When Cs particle (or Cs solution) migrate in the soil, the diffusion coefficient should be the results of many processes in the soil. These processes include the effect of various materials which constitute the soil (clay, litter, sand), or the variations of pore size in the soil. Hence we regard the diffusion coefficient as the stochastic variable, we derive the model. Specifically, we consider the solution of ADE to be the conditional probability $C(x, t | D)$ in terms of the diffusion coefficient D and calculate $C(x, t) = \int_{0 \sim \infty} C(x, t | D) * f(D) * dD$, where $f(D)$ is the probability density function of D . This model has a power law tailing in space like the space-fractional ADE.

Keywords: Cs-137, Anomalous diffusion, Power law tailing in space

Estimation of caesium runoff after the Fukushima accident with the consideration of the fractal mountain geometry

*Ryo Kato¹, Yuko Hatano¹

1.University of Tsukuba

In Fukushima Daiichi NPP accident, a lot of radioactive substance was released into a wide range of Fukushima Prefecture. It is necessary to estimate how long and how much radioactive contaminants will be discharged from the forest to the rivers and eventually to the sea. In this study, we tried a new method of prediction caesium (Cs-137). We apply the fractal geometry of the surface of mountains, thereby estimate the amount of runoff of surface soil with Cs-137 attached. It is a method to calculate z (height) coordinates of arbitrary points. We calculate the height of the location that we want to know from average of neighborhood points with the white noise. We can simulate a ridgeline of mountain, which similar to the real mountain. In the study, I used the midpoint displacement expanded into three dimensions. The universal soil loss erosion (USLE) model was used to calculate the volume of soil erosion of the simulated ground. And we calculate erosion of Cs-137 from the soil erosion volume. We compared this data of Cs-137 erosion and erosion of real ground. We found that our result agrees with the data roughly. So we concluded this method used the fractal simulation is useful.

Keywords: discharge, runoff, radionuclide

Uptake of radioactive Cs by soybeans depending on the level of K application

*Sayaka Motojima^{1,2}, Tomoko Uchida¹, Takeshi Ota¹, Takuro Shinano¹

1.National Agriculture and Food Research Organization, 2.Graduate school of science and technology, Niigata University

[Introduction]

After the Nuclear Power Plant accident, radioactive contamination of farmland caused contaminated crop production. It is known that radiocesium (radio Cs; Cs-134 + Cs-137) behaves similarly to potassium (K) in the environment; when the concentration of exchangeable K in soil is low, plants uptake radio Cs easily. Because soybeans (*Glycine max*) require substantial K, soybeans more easily absorb radio Cs from soil than other crops. Inhibition of absorption of radio Cs using K fertilization is required for safe crop production.

In this study, we investigated the time-dependent change of radio Cs concentration in soybeans, and the exchangeable K and radio Cs concentration when changing K fertilizer application rate. This information may be applied to develop an optimal method for inhibition of radio Cs absorption.

[Materials and Methods]

The study site is located in Fukushima Prefecture. Soybeans were seeded in June and harvested in October, 2015. Soil samples were collected before seeding and at five-leaf, full flowering, full seed, and full maturity stage from directly under the plants. Plant samples were also collected at each of these growth stages. Plant samples were separated into leaves, petiole, stems, pods, and beans and the growth amount, yield, and radio Cs concentration were measured for each part. The exchangeable K concentration, radio Cs concentration and exchangeable radio Cs concentration were also determined.

We conducted an exchangeable K level test and K sustained effect test. The basal fertilizer was N-P-K = 3-12-0 kg/10 a in all tests. In the exchangeable K level test, five levels of exchangeable K were set: no K fertilizer (3 years) and 15, 30, 50, and 70 mg K₂O/100 g. The K fertilizer was applied at seeding. Non-planted plots dressed with the same levels of K fertilizer were also established. We also investigated the sustained effect of K, in which the concentration of exchangeable K was set to 70 mg after harvesting in 2014, and no K fertilizer was applied to the same sections in 2015. All tests were conducted in triplicate.

[Results and Discussions]

The average concentration of radio Cs in soil was 3,391 ±240 Bq/kg at harvest.

In the Exchangeable K level test, there was no major difference in bean yield between exchangeable K levels. The grain radio Cs concentration and transfer factor from soil to beans (TF) decreased for applications greater than 30 mg K₂O (relative to no K fertilizer and 15 mg K₂O). The highest exchangeable radio Cs in soil was found before seeding in all treatments. For all treatments, the exchangeable radio Cs content throughout the year was lower when exchangeable K levels were higher. The no K fertilization, 15 and 30 mg K₂O plots had higher exchangeable radio Cs content than non-planted plots. This suggests that when soil K₂O content is below 30 mg, soybean planting increases exchangeable radio Cs in soil.

Because there was sustained K effect of 2013 and 2014, planted plots had different soil K contents before seeding. However, the exchangeable K concentration was similar in all non-planted plots, and at levels over 30 mg K₂O/100 g, it increased after fertilization to five-leaf. Exchangeable K at harvest was comparable between K levels regardless of planting status. Thus, the no K fertilization and 15 mg K₂O/100 g have higher radio Cs concentrations and TF because of a lack of exchangeable K and an increasing exchangeable radio Cs.

The concentration of grain radio Cs in the K sustained effect test was lower than in the no K fertilization plots. This suggests that the exchangeable K concentration before seeding was higher, presumably because sufficient K content had been ensured. But the soil K_2O content decreased with time-dependent, so there is a risk that radio Cs concentration of grain will increase next cultivation.

Keywords: Radioactive Cs, Soybean, Potassium

Vertical profiles of ^{134}Cs and ^{137}Cs in 1980, 2002, 2011, 2012 and 2015 along 165 deg. E in the North Pacific Ocean

*Michio Aoyama¹, Daisuke Tsumune², Takaki Tsubono², Yasunori Hamajima³, Yuichiro Kumamoto⁴, Toshiya Nakano⁵

1.Institute of Environmental Radioactivity, Fukushima University, 2.Central Research Institute of Electric Power Industry, 3.Low Level Radioactivity Laboratory, Kanazawa University, 4.Japan Agency for Marine-Earth Science and Technology, 5.Japan Meteorological Agency

^{134}Cs and ^{137}Cs , hereafter radiocaesium, were released to the North Pacific Ocean by two major likely pathways, direct discharge from the TEPCO Fukushima Dai-ichi Nuclear Power Plant (FNPP1) accident site and atmospheric deposition off Honshu Islands of Japan, east and northeast of the site. Activities of radiocaesium released by the FNPP1 accident were measured along 165 deg. E in 2011, 2012 and 2015. In this presentation, we present long term behavior of FNPP1 released radiocaesium in the ocean interior of the North Pacific Ocean based on the observations and model simulations through 2015. We also discuss about ^{137}Cs profiles observed in 1980 and 2002 in the same region which derived from atmospheric nuclear weapons tests conducted in late 1950s and early 1960s.

In 2002, the ^{137}Cs profile along 165°E in the North Pacific Ocean is characterized by several subsurface cores with high ^{137}Cs , including two ^{137}Cs concentration maxima at 20°N, 165°E, one at 250 m and one at 400–500 m depths. The shallower maximum is in the density range of subtropical mode water (STMW) and the deeper one is in the density range of central mode water (CMW). The main ^{137}Cs cores, therefore, were formed by movements of STMW and CMW in the interior ocean during the past four decades in 2002. The ^{137}Cs has been transported from subarctic region to subtropics and tropics as a result of subduction.

In October 2011, ^{134}Cs activity derived from FNPP1 accident showed a maximum of 24.4 ± 1.77 Bq m⁻³ at 26 meters depth at 40°N, 165°E and 80 % of ^{134}Cs inventory existed shallower than 200 meters depth while ^{134}Cs activity showed a maximum of 9.18 ± 0.71 Bq m⁻³ at 301 meters depth at 39°N, 165°E and only 20 % of ^{134}Cs inventory existed shallower than 200 meters depth in June 2012.

In June 2012, ^{134}Cs activity also showed a maximum at subsurface at 29°N, 165°E. This subsurface maximum, which was also observed along 149°E, might reflect the southward transport of FNPP1-derived radiocaesium in association with the formation and subduction of STMW. In June 2012 at 34°N–39°N along 165°E, ^{134}Cs activity showed a maximum at around potential density= 26.3 kg m⁻³, which corresponds to CMW. ^{134}Cs activity was higher in CMW than in any of the surrounding waters, including STMW. These observations indicate that the most effective pathway by which FNPP1-derived radiocaesium is introduced into the ocean interior on a 1-year time scale is CMW formation and subduction. In June-July 2015 at 36°N–44°N along 165°E, there are only very weak signal of subduction of FNPP1-derived radiocaesium which means subducted radiocaesium might move eastward from this region.

Keywords: radiocaesium, North Pacific Ocean, subduction, Fukushima Dai-ichi Nuclear Power Plant (FNPP1) accident

Sensitivity analyses of sediment and ^{137}Cs behaviors in reservoirs during rainfall events

*Hiroshi Kurikami¹, Akihiro Kitamura¹

1. Japan Atomic Energy Agency

Investigations and simulations are important to understand sediment and radioactive cesium migration in reservoirs contaminated by the accident at the Fukushima Dai-ichi Nuclear Power Plant. In the previous study, we presented one- and two-dimensional simulations of sediment and radioactive cesium migration in the Ogaki Dam reservoir located in the middle reach of the Ukedo River and found that the reservoir played an important role to delay and buffer the movement of radioactive cesium in heavy rainfall events and that the buffer effect depended on particle sizes of suspended sediment and the water level in the reservoir. In this study, to understand the sensitivity of intensity and duration of flood events to discharges of sediment and radioactive cesium during flood events, we performed sensitivity analyses by using the FLESCOT code, a three-dimensional finite volume model developed by the Pacific Northwest National Laboratory. It considers turbulent water flow and transports of multi-size sediment and radioactive cesium both in dissolved and particulate forms. The results showed that the discharge proportions depended on sediment size, event intensity and event duration. The proportions of sediment/ ^{137}Cs discharges increase, as event duration is shorter/heavier. The silt component is a main carrier of radioactive cesium in larger events, while the clay-sorbed and dissolved forms are dominant in smaller events. In heavier events, resuspension of bed sediment took place.

Keywords: Fukushima Daiichi NPP, Reservoir, Sensitivity analysis, FLESCOT, Cesium, Sediment

Study on transport behavior of cesium in the ground water via fractured rock

*Shinji Takeuchi¹, Takeshi Hayashi², Shiho Yabusaki³, Hiroaki Suzuki⁴, Arisa Kato¹, Kento Moriya¹

1.Nihon University, 2.Akita University, 3.Fukushima University, 4.Nippon Koei

Radioactive cesium released by the accident of Fukushima Daiich Nuclear Power Plant was deposited widely around Abukuma mountain region of eastern Fukushima Prefecture.

Fractured granite is widely distributed at the Abukuma Mountains. Many of the deposited Cs adsorbed on the soil of a few ~ 10cm from the surface. However, in some area, the basement fractured rocks are exposed directly on the ground, or distributed at the shallower depth from the top. In these area it can't be denied the possibility that Cs moves quickly via fracture in the basement rock. Especially, as for the Cs recharged at the mountain area, the concentration in the ground water of the spring and/or wells at the discharge area could increase with time at later time as the half-life time of the ¹³⁷Cs is about 30 years. It is one of the biggest concern for residents who are already considering return to their hometown, or already use the spring and wells. However there has been seldom investigated cases of long-term behavior of the Cs released by the accident in the fractured rock.

For this reason, we have carried out the investigation of ground water analysis, dating of ground water and measurement of Cs concentration to predict the future exposure dose at discharge area. We have conducted geological, hydrogeological and hydrochemical investigation, and ground water simulation at around Odaka-ku, Minami-soma city, Fukushima Prefecture, where Cretaceous granite of Abukuma Mountain area at west part and Neogene sedimentary formation is distributed at the eastern lowland. Thus the general trend ground water flow is from west to east. The Futaba fault is situated between the Abukuma granite and Neogene sedimentary formation.

From the results of the geological investigation, Futaba fault has mylonite fabric which suggests the flow barrier function to ground water flow initially, though, brittle fracture of later stage is observed in the mylonite. And small amount of ground water flow from the fracture. This suggests Futaba fault doesn't have the flow barrier function. Regarding the hydrochemical analysis, the ground water sampled from the Futaba fault and artesian well indicate relatively longer residence time. Estimated ground water age is 25 to 30 years from the result of the tritium analysis etc. Moreover, Cs concentration in the ground water from the artesian well is below the detection limit. From the result of the ground water flow simulation which is modeled granite, Futaba fault and sedimentary formation with assigned hydraulic conductivity from data base, the hydraulic head distribution varies with the assigned hydraulic conductivity (higher or lower permeability) of the Futaba fault. For the origin of the ground water at the artesian well, it is unlikely from the Abkuma Mountain, but possibly from the sedimentary formation east side of the Futaba fault. This work was supported by JSPS KAKENHI Grant Number 15K14277

Keywords: Fukushima, Fractured Rock, Radioactive Cesium, Transport Behavior