

Polarization解析による日本海溝浅部微動の検出

Polarization evidence for the occurrence of shallow tremors in the Japan Trench subduction zone

*太田 和晃¹、伊藤 喜宏¹、片上 智史¹、日野 亮太²、鈴木 秀市²、篠原 雅尚³

*Kazuaki Ohta¹, Yoshihiro Ito¹, Satoshi Katakami¹, Ryota Hino², Syuichi Suzuki², Masanao Shinohara³

1.京都大学防災研究所、2.東北大学大学院理学研究科、3.東京大学地震研究所

1.Disaster Prevention Research Institute, Kyoto University, 2.Graduate School of Science, Tohoku University, 3.Earthquake Research Institute, University of Tokyo

In the Japan Trench subduction zone, northeast Japan, the coincidental occurrences of the tremors with the slow slip events (SSEs) have been identified by using the ocean bottom seismometer (OBS) records (Ito et al., 2013; Ito et al., 2015). However, since the previous detection was based on the amplitude changes of ambient noise levels at few stations near the trench axis, the locations and source mechanisms of tremors are still uncertain. Here we investigate the polarization of OBS data to validate and deduce further source information of shallow tremors beneath the Japan Trench subduction zone.

Following the method proposed by Jurkevics (1988), we calculate the average particle motion polarization for every 10-minute time window on the basis of the three-component covariance matrix of ground motion. Three principal axes of the best-fit ellipsoid to the particle motion correspond to the eigenvectors of the matrix in the least squares sense. The polarization azimuth is given by the direction of first eigenvector and the degree of linearity is given by the ratio among three eigenvalues. We analyze the continuous velocity seismograms for 5 months from November 2010 to March 2011 recorded at 17 short-period OBS network stations deployed in the Japan Trench axis area off Miyagi, northeast Japan.

We obtain several long sequences of high linearity and nearly constant polarization azimuths associated with tremors from the records of at least three stations near the trench. Three major sequences correspond to the tremor sequences reported in Ito et al. (2015). The stable and nearly constant azimuths in these sequences indicate the similarities of focal mechanisms and epicenters of tremors. The dominant polarization azimuth shows the angle of about 130 degrees, which may suggest shear slips in the subduction direction of the Pacific plate. Furthermore, the azimuths slightly change toward the timing of the largest foreshock of the 2011 Tohoku-Oki earthquake, which possibly indicates the migration of tremor sources.

We further apply the method to three different frequency bands (0.5-2 Hz, 2-8 Hz, 10-20 Hz) of OBS data to examine frequency characteristics. While the results from three bands show quite different background polarization azimuths, the specific polarization patterns associated with the SSE are only shown at the frequency of 2-8 Hz, which also supports the occurrences of tremors.

キーワード：日本海溝、微動、振動方向解析、海底地震計

Keywords: Japan Trench, tremor, polarization analysis, OBS

日奈久断層帯下部で定常的に発生する非火山性微動の活動特性(2)

Tremor activities beneath the Hinagu fault zone (2)

*宮崎 真大¹、松本 聡²、清水 洋²

*Masahiro Miyazaki¹, Satoshi Matsumoto², Hiroshi Shimizu²

1.京都大学防災研究所、2.九大・地震火山センター

1.Disaster Prevention Research Institute, Kyoto University, 2.SEVO, Kyushu Univ.

日奈久断層帯において、遠地地震の表面波がもたらした動的応力により非火山性微動が誘発されていることが明らかになっている(Chao and Obara, 2015). 微動は断層帯の深部延長部で発生し、地震波トモグラフィ(Matsubara and Obara, 2011)との比較では、震源域の深部にP波速度の低速度域、地震発生層に対応する浅部に高速度域という速度構造の変化があることが明らかになっている(Miyazaki et al., 2015).

外部からの応力擾乱がない場合でも断層の深部において非火山性微動が発生しているかを知ることは、発生過程を理解するうえで重要である。著者らはこれまでに、誘発微動波形をテンプレートとして、Matched Filter法(Gibbons and Ringdal, 2006)により定常的な活動の検出を行ってきた(宮崎他, 2014, SSJ). 本発表では、検出されたイベント波形を新たにテンプレートに加えた結果について報告する。

本発表で使用したテンプレート波形は、誘発微動の波形と比較して見かけの継続時間が短い。この性質を利用し、渡辺の式(渡辺, 1971)を用いてマグニチュードの決定を試みた。検出されたイベントのほとんどはノイズに埋もれていたが、SN比が比較的良好イベントについては、マグニチュードが $-0.4 \sim -1.0$ 程度であることが分かった。また、グーテンベルグ・リヒター則を適用すると、b値が1.4程度となった。浅部の地震発生層で起きている地震活動のb値はおよそ1であり、浅部と比較して相対的にやや大きな値をとることが分かった。

また、数十分の時間規模で微動活動が活発化する場合があることを新たに発見した。活発化している間の波形の振幅は、個々の観測点におけるノイズレベルの変動を大きく超えるほどではなく、ノイズレベルの大きい観測点ではシグナルがノイズに埋もれている。また、プレート境界で見られる非火山性微動のような継続時間の長い振幅の高まり(Obara, 2002)も、あまり顕著では無い。Miyazaki et al. (2015)では、地震波トモグラフィの結果を比較し(Shelly et al, 2006; Matsubara and Obara, 2011), 日奈久断層周辺では、間隙流体圧の高い領域が沈み込み帯(四国西部)と比較して局所的である可能性を指摘している。同様に考えると、日奈久断層帯における微動活動の規模が小さいのは、すべり領域が小さいことが一因にあると示唆される。

謝辞

本研究では、九州大学の定常・臨時観測点に加え、鹿児島大学、気象庁および防災科学技術研究所のデータを使用いたしました。記して感謝いたします。

キーワード：日奈久断層、内陸地震、非火山性微動

Keywords: the Hinagu fault zone, inland active fault, non-volcanic tremor

深部微動震源決定のための改良エンベロープ相関法の開発と性能評価

Develop and evaluate modified envelope correlation method for deep tremor

*水野 尚人¹、井出 哲¹*Naoto Mizuno¹, Satoshi Ide¹

1. 東京大学大学院理学系研究科地球惑星科学専攻

1. Department of Earth and Planetary Science, The University of Tokyo

西南日本での深部低周波微動の発見[Obara, 2002]以降、微動についての多くの研究が行われている。これらの研究の基礎として微動の震源決定が必要であり、これにはエンベロープ相関法[Obara, 2002]が広く持ちいられてきた。これを改良した手法として、Wech and Creager(2008)では相互相関係数の和を最大化する手法が提案されている。本研究ではWech and Creager(2008)を改良し、震源決定精度と検出能力が向上する手法を開発した。

エンベロープ相関法では、エンベロープ波形の観測点間の相関係数を最大化する走時差を説明するように震源位置を決める。本研究では、Wech and Creager(2008)と同様に震源位置から計算される観測点間の走時差に対応する相関係数を求め、各観測点ペアでのこれらの和が最大となるような位置に震源を決定するが、Wech and Creager(2008)と異なり相互相関関数の重み付けは行わない。これは全ての観測点ペアの正規化されたエンベロープ波形の差の二乗和を最小化することに相当する。目的関数の最適化は、グリッドサーチで得られた局所解から勾配法を用いて行った。

本研究では、提案手法を西南日本のHi-Netデータに適用し、微動の検出を行った。ブートストラップ法を用いた誤差推定によって、震源決定精度は水平方向・垂直方向共に約1kmと推定された。これは報告されているエンベロープ相関法の震源決定精度[Ide, 2010 など]より向上している。従来の手法では1つのタイムウィンドウに対して1つの微動か地震しか検出できないが、提案手法では複数の微動や地震が1つのタイムウィンドウで発生するとそれぞれが局所解として現れることが確認された。

キーワード：深部微動、震源決定、エンベロープ相関法

Keywords: Deep tremor, Hypocenter determination, Envelope correlation method

3Dアレー観測による東海地域・深部低周波地震のP波・S波の検出方法 - 震源決定への応用 -
A detection method for P and S waves of deep low-frequency earthquakes using a 3D array in the Tokai area and its application to hypocenter determination

*鈴木 貞臣¹、大久保 慎人²、今西 和俊³、武田 直人³

*Sadaomi Suzuki¹, Makoto Okubo², Kazutoshi Imanishi³, Naoto Takeda³

1.公益財団法人 地震予知総合研究振興会 東濃地震科学研究所、2.高知大学、3.独立行政法人 産業技術総合研究所

1.Tono Research Institute of Earthquake Science, Association for the Development of Earthquake Prediction, 2.Kochi University, 3.Geological Survey of Japan, National Institute of Advanced Industrial Science

We have developed a novel method that uses a 3D array to detect the P and S waves of deep low-frequency earthquakes (LFEs) that occur along the subduction zone of the Philippine Sea plate in southwest Japan. Obtaining accurate hypocenters of LFEs is very difficult because their seismic waves are characterized by low amplitude and the absence of sharp pulses. In particular, identifying P phase arrivals is not readily possible using conventional methods and seismic networks. To determine their hypocenters accurately-not only their epicenters but also their depths-we tried to find their P and S wave pairs and obtain S-P times. We constructed a 3D array (6 km x 4 km area, see Fig.1) using 14 seismic stations in the Tokai area with three component seismographs, including ones with deep (600 m at the deepest) borehole seismographs. We observed remarkable LFE activity occurring in the Tokai area over November 10-30, 2010. We successfully detected not only S waves but also very weak P waves of LFEs using the 3D array data and the semblance method. Assuming a homogeneous half-space model with P wave velocity=4.5 km/s and S wave velocity=2.2 km/s in the 3D array, we calculated the semblance distributions for more than 20 LFEs to obtain their propagation parameters (back azimuth and the incident angle of seismic waves) and to identify P and S-waves. Using the time of the maximum value of the semblance in each component, we detected the direct P wave in the vertical component and the S wave in the horizontal component, providing S-P time. Fig.2 shows an example of hypocenter determination (red star) using estimated S-P time and propagation parameters, where we found 8.2 km difference in depth between the hypocenter in this study and that (green star) listed in Japan Meteorological Agency (JMA) catalogue. This example suggests that the inclusion of the S-P time strongly reduces the uncertainty on source depth, because the LFEs in the JMA catalogue were generally located using only S-arrival times. Choosing 4 LFEs with reliable results obtained from the semblance analysis, we located their hypocenters and found they distribute in the depth range from 28 km to 35 km approximately along the plate interface inclining in depth from 30 km to 32 km. Because a single array inherently has a limitation in the precise location estimate, especially for epicenter, we also tried to locate hypocenters (for example, a blue star in Fig.2) of LFEs using 3D array data together with arrival times (in many cases, S-arrivals) of surrounding stations that listed in JMA catalogue. For the LFE in Fig.2, we found 4.5 km difference (between a blue star and a red star) in the epicenter by combining the arrival times of surrounding stations, which is not always negligible for better understanding the spatial and temporal distribution of LFEs.

キーワード：深部低周波地震、立体アレー、P波とS波、センブランス解析、プレート境界

Keywords: deep low-frequency earthquake, 3D array, P- and S-waves, semblance analysis, plate boundary

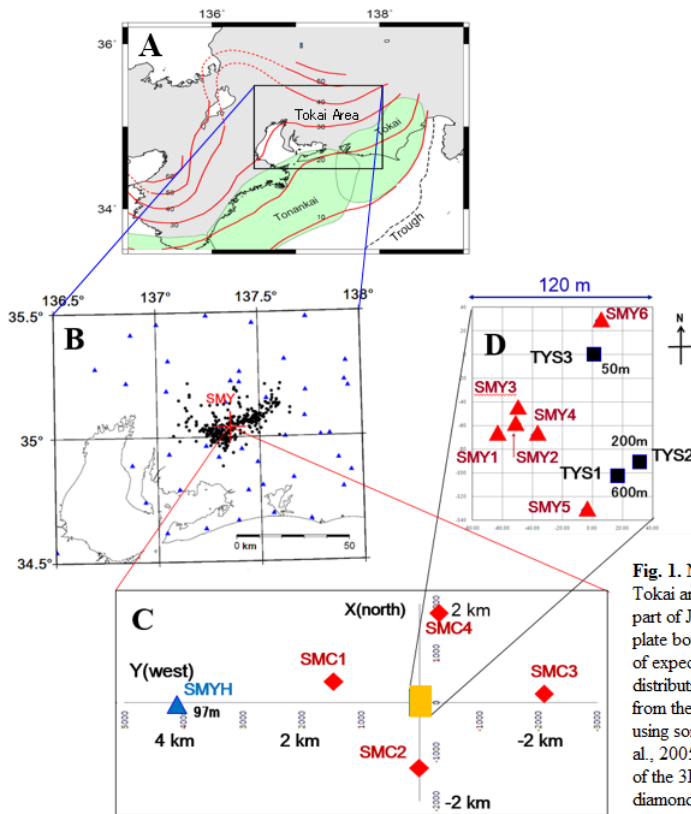


Fig. 1. Map of seismic stations comprising the 3D array of SMY in the Tokai area, located in the central part of Japan. A: Index map of the central part of Japan. Red lines represent the depth contours of the Philippine Sea plate boundary (Hirose et al., 2008). Green areas show the source regions of expected Tokai and Tonanki interplate earthquakes. B: Epicenter distribution (black points) of LFEs occurring in November 2010 derived from the JMA earthquake catalog. The epicenters were located mainly by using some of the seismic stations (blue small triangles) of Hi-net (Obara et al., 2005) operated by NIED. A thin red cross shows the central location of the 3D array of SMY. C: Distribution of four SMC stations (red diamonds) of a medium-sized array and SMYH station (blue triangle) of Hi-net. D: Distribution of six stations (red triangles) of a small-sized array and three borehole stations (black squares). Numbers followed by m show the depths of the boreholes.

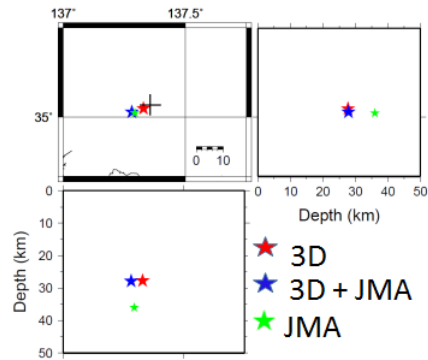


Fig. 2. An example of the difference in depth of hypocenter of LFE (LFE13) between 3D, 3D+JMA, and JMA. The 3D and 3D+JMA hypocenters were located using not only S-arrival times but also P-arrival times, while the JMA hypocenter was located using only S-arrival times.

豊後水道周辺域におけるスロー地震の相互作用

Interaction between slow earthquakes in and around Bungo channel, Nankai subduction zone

*小原 一成¹、高木 涼太²、山下 裕亮³、浅野 陽一⁴、松澤 孝紀⁴、田中 佐千子⁴、廣瀬 仁⁵、前田 拓人¹*Kazushige Obara¹, Ryota Takagi², Yusuke Yamashita³, Youichi Asano⁴, Takanori Matsuzawa⁴, Sachiko Tanaka⁴, Hitoshi Hirose⁵, Takuto Maeda¹

1.東京大学地震研究所、2.東北大学、3.京都大学防災研究所、4.防災科学技術研究所、5.神戸大学

1.Earthquake Research Institute, The University of Tokyo, 2.Tohoku University, 3.Disaster Prevention Research Institute, Kyoto University, 4.National Research Institute for Earth Science and Disaster Prevention, 5.Kobe University

Slow earthquakes occur at transition zones from locked to stable sliding zones along megathrust faults at both shallow and deep parts. So far, various types of slow earthquakes with different characteristic time scales have been detected in many subduction zones along the Pacific Rim. In each subduction zone, the activity style, combination and interaction of slow earthquakes are different. Therefore, the slow earthquake is considered as an index to characterize each subduction process. Interaction between long-term slow slip event (SSE) and downdip tremor has been observed in southwestern Japan, Mexico, and Alaska even though detailed relationship is slightly different. In Bungo channel near the western edge of deep tremor belt-like source region along the Nankai subduction zone in southwest Japan, the long-term SSE occurs at a recurrence interval of about six years. During the 2003 and 2010 long-term SSEs, tremor activity increased at the shallower part of the tremor zone, which is the adjacent region of the SSE source fault. On the other hand, the deeper tremor activity is stable irrespective of the SSE. Takagi et al. (2016) detected tiny crustal deformation and estimated a sequence of long-term SSEs with eastward migration through the gap between locked and tremor zones. Associated with the migrating long-term SSE, the long-term variation of tremor activity seems to migrate eastward at speed of a few 10 km per year in western Shikoku. These observation suggest that the long-term SSE may trigger the downward neighboring tremor activity.

On the other hand, shallow tremor has been recently detected associated with shallow very-low-frequency earthquake near the Nankai trough (Yamashita et al., 2015). This shallow slow earthquake activity shows along-strike variation. At the updip side of the 1946 Nankai earthquake rupture fault, shallow slow earthquake seismicity is quite low. On the other hand, slow earthquake frequently occurs at Hyuga-nada where the quasi-stable sliding zone with many repeaters exists at the downdip side of the shallow slow earthquake region. The slow earthquake seismicity is usually limited at the southern part from the Kyushu-Palau ridge. However, slow earthquake region extended eastward with a length of 100 km from the Kyushu-Palau ridge at the beginning stage of the Bungo channel long-term SSEs in 2003 and 2010. This might suggest that the shallow slow earthquake seismicity is an indicator for the coupling status at the downdip portion of the plate interface.

キーワード：スロー地震、沈み込み帯

Keywords: slow earthquake, Subduction zone

Constraints on source parameters of low-frequency earthquakes in Parkfield, CA

*Amanda Thomas¹, Gregory Beroza³, David Shelly⁴, Michael Bostock²

1.University of Oregon, 2.University of British Columbia, 3.Stanford University, 4.USGS, Menlo Park

Low-frequency earthquakes (LFEs) are small repeating earthquakes that occur in conjunction with deep slow slip. Like typical earthquakes, LFEs are thought to represent shear slip on crustal faults but when compared to earthquakes of the same magnitude, LFEs are depleted in high frequency content and have lower corner frequencies, implying longer duration. Here we exploit this difference to estimate the duration of LFEs on the deep San Andreas Fault (SAF). We find that the $M < 1$ LFEs have typical durations of ~ 0.2 s. Using the annual slip rate of the deep SAF and the average number of LFEs per year we estimate average LFE slip rates of ~ 0.24 mm/s. When combined with the LFE magnitude this number implies a stress drop of $\sim 10^4$ Pa, two to three orders of magnitude lower than ordinary earthquakes, and a rupture velocity of order 0.7 km/s, 20% of the shear wave speed. Typical earthquakes are thought to have rupture velocities of ~ 80 -90% of the shear wave speed. Together the slow rupture velocity, low stress drops, and slow slip velocity explain why LFEs are depleted in high frequency content relative to ordinary earthquakes and suggest that LFE sources represent areas capable of relatively higher slip speed in deep fault zones.

深部低周波微動の高速移動現象

High-speed migration of tremor along the Nankai subduction zone, Japan

*加藤 愛太郎¹、鶴岡 弘²、中川 茂樹²、平田 直²*Aitaro Kato¹, Hiroshi Tsuruoka², Shigeki Nakagawa², Naoshi Hirata²

1.名古屋大学大学院環境学研究科、2.東京大学地震研究所

1.Graduate School of Environmental Studies, Nagoya University, 2.Earthquake Research Institute, Tokyo Univ.

As an underlying source physics of episodic tremors and slip (ETS), a diffusion process of stress or fluid along plate boundary fault has been proposed as one of plausible mechanism [e.g., Houston et al., 2011]. Most rapid migration phenomenon is categorized as high-speed tremor migration features, where the propagation speed of tremor-front rises up to ~ 100 km/h. However, there is little constraint on spatio-temporal evolution of high-speed tremor migration features. To reveal spatio-temporal evolution of high-speed tremors migrations, we applied a matched-filter technique to continuous seismograms during 6 years, using relocated template low-frequency earthquakes (LFEs) at the western part of Shikoku Island. We newly detected about 60 times the number of template LFE events, which is fairly larger than ones obtained by conventional envelope cross correlation method. We identified hundreds of repetitive sequences of high-speed tremor migrations, which evolve in a diffusional manner with diffusion constant to be 10^5 m²/s. The length scale of the fast diffusion is relatively short, up to ~20 km. Most of the rapid migrations seems to be triggered by ocean and solid Earth tides. As a fundamental elements for diffusive propagation of ETS, stress diffusion on the background ductile shear zone [Ando et al., 2012] or slip and fluid diffusion [Shelly, 2015] is considered to be a likely explanation of the high-speed tremor migrations.

Universality of very low frequency signals from slow earthquakes
Universality of very low frequency signals from slow earthquakes

*井出 哲¹

*Satoshi Ide¹

1. 東京大学大学院理学系研究科地球惑星科学専攻

1. Department of Earth and Planetary Science, University of Tokyo

The scaling law for slow earthquake [Ide et al., 2007] provides a unified view of deep tectonic tremors, low frequency earthquakes, and slow slip events (SSE). This view has been strengthened by several kinds of evidence and explanations using theoretical models. One of the strongest evidence is the detectability of intermediate phenomena between seismically observed tremor above 1 Hz and geodetically observed SSE longer than several hours. The signals are especially clear in the very low frequency (VLF) range from 0.02 to 0.05 Hz, where Ito et al. [2007] first discovered signals accompanied with tremors. Since their discovery, similar phenomena have been found in many places, with simultaneous tremor observation. This fact suggests the universality of VLF signals behind tremors, and we can enhance the signal amplitude in the VLF range to overcome environmental noises, by stacking broadband seismograms relative to tremor timing.

We arrange many reference points in a tremor zone, extract VLF signals by stacking broadband seismograms, and determine moment tensor corresponding to the underground deformation. This method was first applied to a wide tremor zone in the Nankai subduction zone [Ide and Yabe, 2014], and then to a small tremor cluster in Taiwan [Ide et al., 2015], the Guerrero tremor region in Mexican subduction zone [Maury et al., 2016], around southern Vancouver Island in Cascadia subduction zone, and the Parkfield section of the San Andreas Fault. In every region, moment tensor solutions consistent with regional plate motion were determined. These solutions will constrain tectonic interpretation in each region. The reliability of solution is not homogeneous: we can constrain solutions with only 500 tremors in Nankai, while noises are too large after stacking 5000 tremors in Parkfield. This is partially due to the different quality of seismic networks, but the size of source is not the same everywhere. Average moment magnitudes corresponding to VLF processes are M_w 2.2-3.0 in Nankai, Guerrero, and Cascadia, but less than M_w 2 in Parkfield. The similarity and difference for these results will provide keys to understand physics that govern these slow deformation processes.

キーワード: slow earthquake、deep tectonic tremor、very low frequency

Keywords: slow earthquake, deep tectonic tremor, very low frequency

日向灘における浅部超低周波地震の自動検出

The detection of shallow very low frequency earthquake in Hyuga-nada

*村本 智也¹

*Tomoya Muramoto¹

1.京都大学防災研究所付属地震予知研究センター

1. Disaster prevention research institute Kyoto University

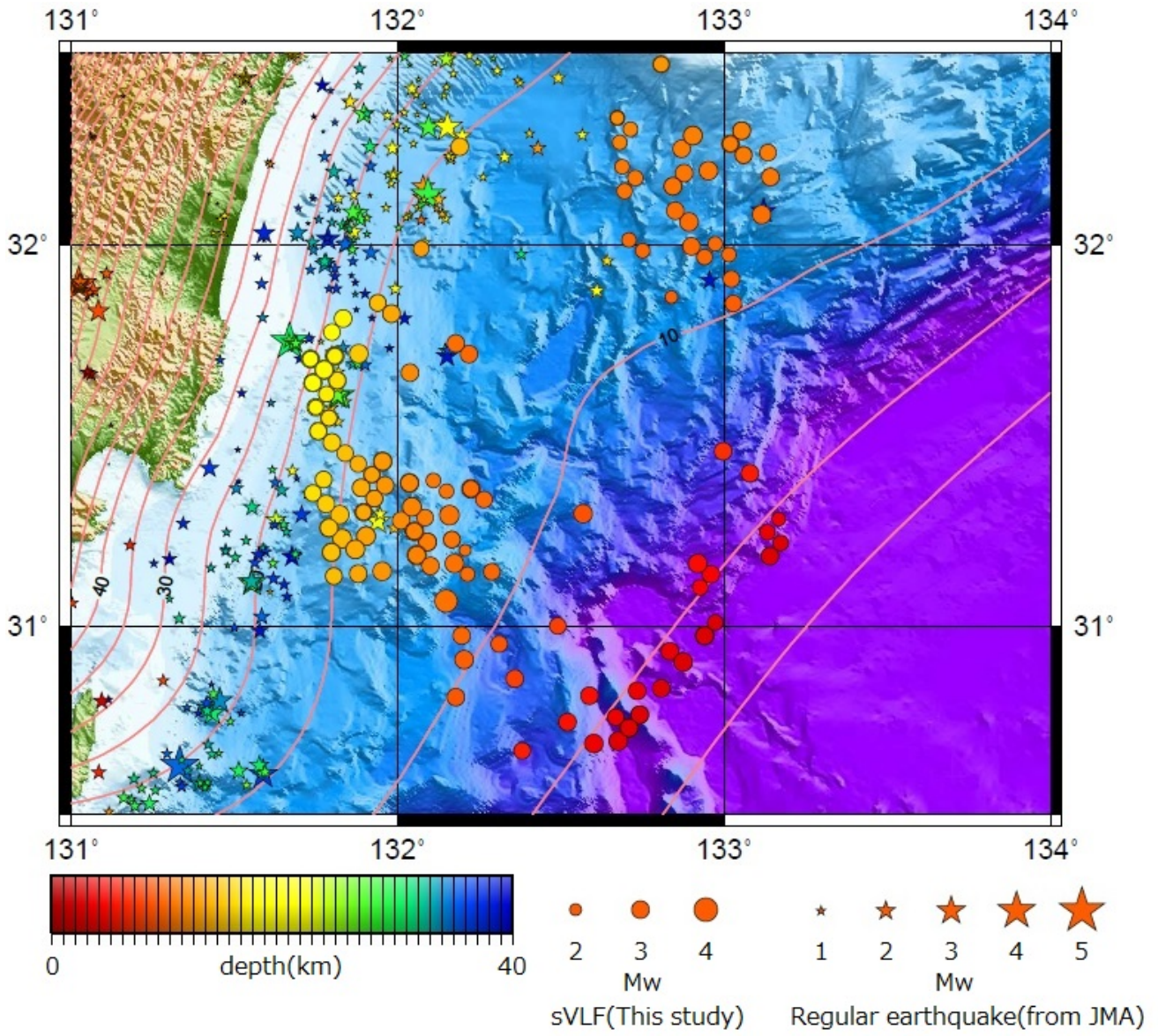
GPS continuous observation system of Geographical Survey Institute, Hi-net and F-net of National Research Institute for Earth Science and Disaster Prevention have been nationally developed. Thanks to these seismic network systems that "Slow earthquake" exceeding normal earthquake on a long period is discovered in southwest Japan for these 10 years [e.g. Obara, 2002]. The slow earthquake is a generic name of the different multiple phenomena of the time scales. These phenomena are classified by frequency, e.g. Slow Slip Event (SSE), Non volcanic tremor (tremor), Very Low Frequency earthquake (VLF) [Ito et al, 2007]. Tremor and VLF are observed due to earthquake vibration and these signals are in 2-8Hz and 0.02-0.05Hz respectively [Ito et al, 2007]. It is shown that tremor and VLF are activated by SSE and the relationship with the giant earthquake is pointed out. In Hyuga-nada that is located in the west end of an area that is expected to have a major earthquake along Nankai trough, understanding the seismic activity including the slow earthquake and exactly sliding properties of plate are the purpose of this study.

The analysis in this study is carried out on data between September 1, 2006 and September 30, 2006 in the same area as that of Asano et al, [2014]. It is supposed that shallow VLFs are activated by SSE, so the analysis is carried out in a period when tremor are used occurred frequently, and also before and after the period. 21 points observation data of F-net in west japan are used. The data of each observation point are comprised of horizontal north and south direction east and west direction and up-and-down motion.

The result of analysis shows that shallow VLF occurred in the area where asperity of the regular earthquake did not exist. This result indicates that the frictional force at the plate boundary shows different behavior by depth. Similar to a prior study, this study shows that after the shallow VLF's migration towards the east, the migration to the opposite direction started. Thus, the migration direction of the shallow VLF is almost same in the different period. This result suggests that destruction origin and destruction spread direction of SSE considered to activate the activity of VLF are approximately same irrespective of duration period. In addition, the result shows the possibility that in the shallower part (shallower than 15km) of study area where the regular earthquakes do not occur, the unknown slow slip event occurs and activates shallow VLFs.

キーワード：浅部超低周波地震、スロースリップイベント

Keywords: shallow Very Low Frequency earthquake, Slow Slip Event



広帯域海底地震計データの階層的クラスタリングにより得られた、南海トラフ東部における浅部超低周波地震の時空間分布

Spatio-temporal distribution of very low frequency earthquakes in the eastern Nankai accretionary prism revealed by hierarchical clustering analysis of ocean bottom seismometer records

*藤 亜希子¹、尾鼻 浩一郎¹、荒木 英一郎¹

*Akiko To¹, Koichiro Obana¹, Eiichiro Araki¹

1. 国立研究開発法人海洋研究開発機構 地震津波海域観測研究開発センター

1. Japan Agency for Marine-Earth Science and Technology

Many low frequency tremors (LFTs) occurred in the eastern Nankai accretionary prism in October 2016 through a period of about one week and were recorded by the 20 broadband ocean bottom seismometers of the DONET1 ocean floor network. We detected more than 900 tremors at the frequency range of 2-8 Hz. Among these, 144 events were accompanied by signals at lower frequency range (> 0.1 Hz). In this study, the events with the low frequency signal are referred to as very low frequency earthquakes (VLFs).

The observed waveforms of the entire network suggest that many of the events are spatially clustered. However, due to the large errors introduced during the travel time measurement processes, the estimated location of each event is spatially scattered, which makes it difficult to evaluate the distribution of the clustered events.

Here, we introduce a hierarchical clustering algorithm to group some of the closely located events. The degree of similarity between any two events is defined by comparing the arrival times of the peak amplitude obtained by a set of stations at which the signals of both events were observed. The peak amplitude at each station is measured from the root-mean-square envelope of two horizontal components filtered at 2-8 Hz, and then smoothed by a low-pass filter with a cutoff frequency of 0.059 Hz.

Thus far, the algorithm has been applied to only the VLFs, although we intend to eventually cluster all of the events, including the LFTs. Among the 144 VLFs, 121 events grouped with at least one other event, and a total of 27 groups appeared.

Finally, the horizontal location of each cluster was determined by using the median of the measured differential travel times between stations obtained for individual events within the cluster. The differential travel times were calculated from the previously described peak amplitude arrival times. This procedure also allowed us to detect and remove outliers of measured times, which are caused mostly by noise. The locations were estimated by assuming a constant shear velocity structure.

The results showed that the cluster locations are largely divided into two groups. The clusters in the first group (Group 1) are distributed around a major reverse fault in the northern part of DONET1. They occurred within the first 3 days of the total activity. The cluster locations of the second group (Group 2) are distributed form around the major reverse fault of the southern part of DONET1 and slightly toward the trench axis side. Many of the events in the trench axis side seems to have occurred in the latter part of the total period of activity.

The waveforms of events in Group 1 tended to show somewhat discernable S wave onsets compared to events in Group 2. Furthermore, we were able to identify systematic P arrivals for many events in Group 1 by aligning the waveforms within the individual clusters. By using manually picked P and S arrival times, we relocated some clusters by a grid search through a 3-D velocity model. The results showed that the depth of the clusters varies from ~8 km to ~2 km beneath the seafloor. Whereas many events are located near the major reverse fault, some are located ~5 km landward of the fault. Our result suggests that the stress state that promotes the occurrence of VLFEs is not limited to the narrow range along the major fault, but exists through a broader range in the shallow accretionary prism.

キーワード：浅部超低周波地震、広帯域海底地震計、階層的クラスタリング、付加体

Keywords: Very long frequency earthquake, BBOBS, hierarchical clustering analysis , accretionary prism

Tremor location in Guerrero, Mexico from catalog comparison: identification of new clusters

*Julie Maury¹, Satoshi Ide¹, Victor Cruz-Atienza², Vladimir Kostoglodov², Xyoli Perez-Campos²

1.Department of Earth and Planetary Science, University of Tokyo, 2.Department of seismology, Universidad Nacional Autonoma de Mexico

Tectonic tremor are known to occur in two areas in the Guerrero subduction zone, one updip of the other. However these locations are obtained from only 29 months of recording and more precise location is needed. To do this we used two datasets, the previously used MASE dataset and the GGAP dataset. The MASE network is a linear network that allows good along dip resolution. The GGAP network is located around the downdip cluster and is better able to locate the events in this area. We generate a tremor catalog by envelope correlation method for the two time periods. In a second step we estimate their moment tensor from stacking broadband seismograms in the VLF band (0.02-0.05 Hz).

Results shows two different tremor distributions depending on the time period. From MASE data we detect the previously known two clusters, one southern transient cluster and one northern more active cluster. The second dataset reveals that the northern cluster is in fact formed of two clusters in the strike direction. Analysis of the error of the first dataset shows the lack of resolution in the strike direction due to the linearity of the network explaining the difference between the two catalog. To confirm these results our tremor locations are also compared to other catalogs obtained with the tremor energy and polarization (TREP) method [Cruz-Atienza et al, 2015] and the cross station cross correlation method [AGU abstract Peng and Rubin, 2015]. Results from these methods agree globally with our result. The comparison of these three different catalogs underlines the complexity of determining tremor location.

Moment tensor inversion reveals low angle thrust mechanism with slip direction in agreement with TREP results and close to the convergence direction. Additionally the depth of the VLF events is coherent with the depth of the subduction interface highly suggesting that these events represent shear slip on the plate interface.

Keywords: tremor location, moment tensor of slow earthquakes

The fluctuation of the slip accumulation rate of long-term SSE and its relation to VLFE beneath the Iriomote Island, southwest Ryukyu Arc

The fluctuation of the slip accumulation rate of long-term SSE and its relation to VLFE beneath the Iriomote Island, southwest Ryukyu Arc

*Tu Yoko¹、日置 幸介¹、熊谷 博之²、山中 佳子²

*Yoko Tu¹, Kosuke Heki¹, Hiroyuki Kumagai², Yoshiko Yamanaka²

1.北海道大学理学院、2.名古屋大学大学院環境学研究科

1.Graduate School of Science, Hokkaido University, 2.Graduate School of Environmental Studies, Nagoya University

37 slow slip events (SSEs) beneath the Iriomote Island, the southwestern Ryukyu Arc, were detected in the GEONET F3 solution GNSS data 1997-2015. Their average moment magnitude (M_w) is 6.6, and the average recurrence interval is ~6 months, which are in accord with Heki and Kataoka (2008).

However, the recurrence interval was found to vary in time during the 18 years time span. During 2005-2009, the interval remained as short as ~4 months, and then returned to ~7 months after that. Moreover, the SSE slip rate (cumulative slip/ lapse time) increased from 9 to 11 cm/y and from 6 to 11 cm/y during two time periods, 2003-2006 and 2013-2015, respectively. Heki and Kataoka (2008) and Nakamura (2009) suggested that the slip rate could increase due to occurrences of large thrust earthquakes near the Ryukyu trench. However, no noticeable events occurred in this region prior to the trend increase around 2013. Conversely, two earthquake swarms occurred in the Okinawa Trough during these periods. In addition, southward motion of the Yonaguni Island, to the west of the Iriomote, has accelerated together with the SSE slip accumulation rate. From these results, we hypothesize that both the spreading at the Okinawa trough and the subduction at the Ryukyu trench could modify the SSE slip accumulation rate beneath the Iriomote Island.

In additions to SSEs, very low frequency earthquake (VLFE) is another kind of slow earthquakes that occur along the Ryukyu subduction zone. To understand the relationship between SSE and VLFE activities, we analyzed the broadband seismic data of the F-net in Japan and the BATS in Taiwan in order to identify VLFEs in southwestern Ryukyu Arc. During 2005-2010, we detected 2575 VLFEs there, and most of them were found to be thrust events in the shallow part of the plate boundary. According to the distributions of SSEs and VLFEs, we found VLFEs are often activated by SSEs 10-30 days after the SSE onsets. We also found that the VLFE activity becomes higher during the periods of the enhanced SSE slip accumulation rate.

キーワード: slow slip events、very low frequency earthquakes、The Ryukyu subduction zone
Keywords: slow slip events, very low frequency earthquakes, The Ryukyu subduction zone

Repeating Slow Slip Events in the Bonin/Ogasawara Islands Observed by the Continuous Global Navigation Satellite System (GNSS)

*Deasy Arisa¹, Kosuke Heki¹

1.Department of Natural History Sciences, Faculty of Science, Hokkaido University

Slow slip events (SSEs) are the episodic movement across a fault, characterized as a slow fault deformation that releases energy on timescales of hours, to weeks or even years, which is much longer than seconds to minutes timescales of regular earthquakes. Numbers of SSEs has been recognized from various subduction zones around the world. The character of SSE was first recognized in Cascadia subduction zone in the Northwestern of United States and Canada. These studies were followed by some reports of similar event including Japan.

The dense geodetic observation by Continuous Global Navigation Satellite System (GNSS) station operated by Geospatial Information Authority of Japan (GSI), also widely known as GPS, contribute a big impact on observing such events in Japan. It has been used as a way to measure the motion of Earth's crustal plates. In Japan, from the starting of their installation in 1996, various SSEs have been recorded to have occurred.

We have been conducting the same study of this event and reporting the possibility of this occurrence in other part of Japan which is never reported before. The area of this newly found SSE is in the remote islands of Japan, Bonin (Ogasawara) islands, which lies along the convergent boundary where the Pacific Plate subducts beneath the Philippine Sea Plate. These islands are located at the southern part of Japan, very close to the edge of Mariana arcs.

The events are detected by using GNSS data from GSI together with additional supporting data from National Astronomical Observatory of Japan (NAO) to confirm the occurrence of these events. GNSS stations on Bonin Islands recorded the plate deformation and reveals the possible existence of Slow Slip Events (SSEs) near the boundary between the Philippine Sea plate and Pacific plate. The Slow Slip Events (SSEs) together with other crustal deformation in this area has been observed since the beginning of GNSS installation in two islands, Chichijima and Hahajima from 1996 until now. This ~20 years of observation contribute the result of finding of repeating SSEs.

Using data from this dense geodetic network, we focus our study on the repeating SSEs in the latest decade, reporting that there are at least 5 SSEs have occurred within 10 years with the recurrence interval of ~2 years, detected by stations in Hahajima and Chichijima islands. These 5 SSEs have uniform characters in the time constants as well as the recurrence interval, and we modeled the rupturing due to these SSEs by using rectangular fault plane model. This study is giving the result of slip approximately 8-10 cm for each event or 4-5 cm/yr. These events have magnitude from 6.8 to 6.98, varies especially from the size of the fault rupture, with the seismic moment of 2×10^{19} Nm - 3.75×10^{19} Nm.

Keywords: Bonin Islands Arc, Fault Rupture, GNSS, GPS, Ogasawara, Slow slip event (SSE)

2010-2014年に琉球弧南西部で発生したSSEの地殻変動解析

Analysis on Crustal Deformation of Slow Slip Events Occurred in the Southwestern Ryukyu Arc in 2010-2014

*小池 俊貴、西村 卓也²、宮崎 真一¹*toshiki koike, Takuya NISHIMURA², SHINICHI MIYAZAKI¹

1.京都大学理学研究科、2.京都大学防災研究所

1.Graduate school of Science , Kyoto University, 2.Disaster Prevention Research Institute, Kyoto University

In the last 20 years, various types of slow earthquakes have been reported mainly on the plate boundary. For example, Slow Slip Events (SSEs) are one of the slow earthquakes. They don't radiate seismic wave and last for a few days to years. Discovery of slow earthquakes encourage us to examine about strain accumulation and release on plate boundaries.

In the southwestern ryukyu arc, SSEs were reported by Heki and Kataoka (2008). They estimated a simple rectangular fault model from displacement data at 8 GNSS stations. And they reported that SSEs are repeatedly occurred beneath Iriomotejima island. Though, we think faults which cause SSE are probably more complicated, and there is a difference on slip distribution between SSEs.

In this study, we estimate slip distribution of each SSE by using 13 GNSS stations including new stations (one station in Miyakojima island and four stations in and around Iriomotejima island). We adopt a station in Irabujima island as a reference. Then, we analyze GNSS daily coordinates from Apr. 1, 2010 to Jan. 31, 2015, and estimate crustal deformation by fitting a function to the time-series data. We estimate displacement of SSE and earthquake, linear velocity, and initial offset by least square method, and estimate SSE occurrence time and time constant for duration of SSE by grid search method. We assume temporal evolution of SSE is expressed by an exponential decay function proposed by Heki and Kataoka (2008). Then, we obtain horizontal and vertical displacement for eight SSEs.

We estimate slip distribution of SSE by inversion analysis from displacement data. We estimate dislocation on each patch in an elastic half-space (Okada, 1985). We decide fault patches as follows. First, we divide a slip area to small patches, whose size is 10 km square. Then, we set rectangular fault lying on the plate interface on each patch. We adopt constraints on smoothness of slip distribution and non-negative slip. Slip azimuth and weight between data and smoothness are determined by minimizing ABIC. The geometry of the plate interface is based on the Slab 1.0 model (Hayes et al., 2012).

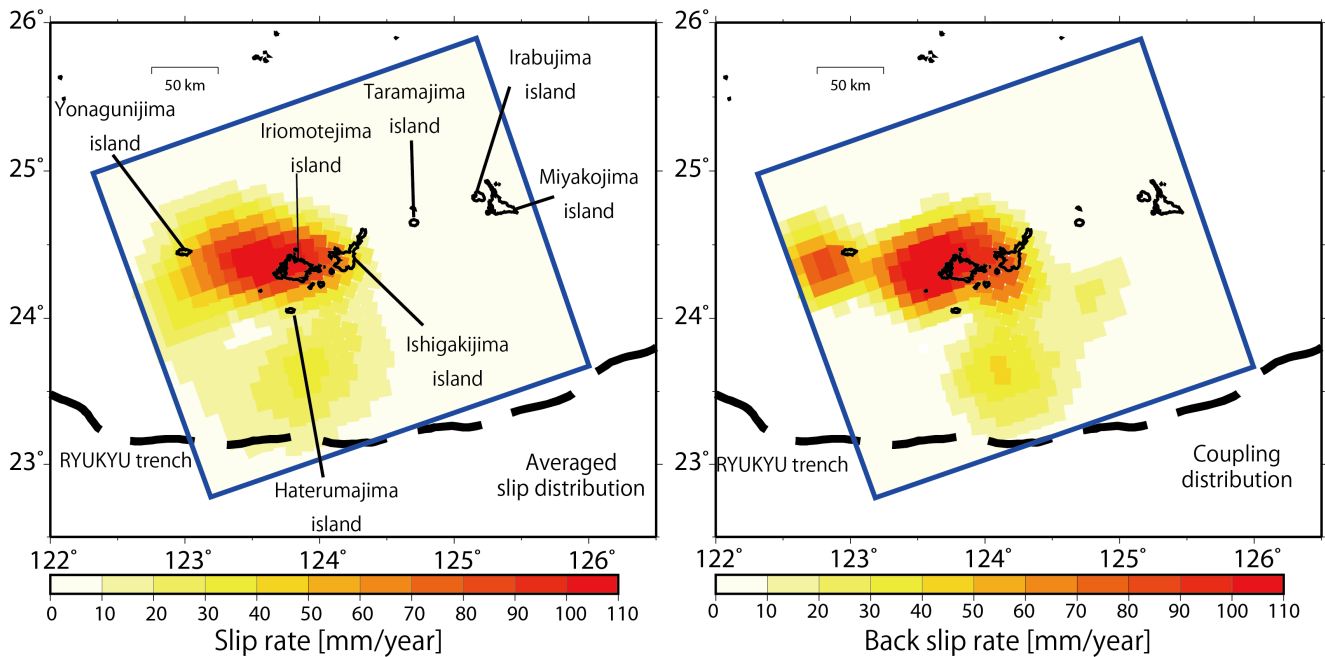
As a result, average moment magnitude, recurrence time, and slip azimuth are estimated to 6.90, 7 month, and 155 degree, which is clockwise angle from north, respectively. Heki and Kataoka (2008) successfully estimated characteristics of SSEs in the southwestern ryukyu arc. However, we found more complicated slip distribution which is varied among SSEs. We introduce obtained results. The slip region is biased to the west on the SSE occurred on Aug. 9, 2010. In case of the SSE occurred on Apr. 30, 2012, slip is also estimated in the region south off Yonagunijima island, besides the slip region on the SSE occurred on Aug. 9, 2010. And south off the Yaeyama islands at a depth of 15~20 km is commonly suggested as a slip area from some SSEs. The depth of the slip area around Iriomotejima island and Yonagunijima island are estimated to be 35~50 km, which is deeper than that in the previous study, mainly because of the adopted geometry.

We also estimate coupling distribution from average velocity data during inter-SSE period. The result suggests strong coupling region. This region is almost the same as slip region of SSE. In this region, coupling rate is calculated to be 75 %. Because back slip rate is almost equal to the

average slip rate of SSEs in this region, most strain is released by the SSEs. Furthermore, we estimate weak coupling south off Taramajima island, although this region has poor resolution. We propose the hypothesis that strain may be accumulated over a long time in this region, and that this region has a potential of a future megathrust earthquake. To examine this hypothesis, we must continue geodetic observation for a long time, and set new stations including ocean bottom pressure gauges.

キーワード：スロースリップ、固着、琉球弧南西部

Keywords: Slow Slip Event, Coupling, Southwestern Ryukyu Arc



四国におけるスローリップイベントの潮汐応力への応答

Slow slip events response to tidal stress in western Japan

*菊地 淳仁¹、井出 哲¹、松本 則夫²

*Junji Kikuchi¹, Satoshi Ide¹, Norio Matsumoto²

1. 東京大学大学院理学系研究科地球惑星科学専攻、2. 産業技術総合研究所地質調査総合センター地震地下水研究グループ

1. Department of Earth and Planetary Science, The University of Tokyo, 2. Tectono-Hydrology Research Group, Geological Survey of Japan, National Institute of Advanced Industrial Science and Technology (AIST)

日本の南西部、紀伊半島から四国地方にかけての沈み込み帯ではスロースリップイベントが度々発生している。スロースリップイベントはプレート境界の摩擦特性が変わる遷移領域で発生しており、その振る舞いを知ることは、プレートの挙動を考える上で非常に重要である。

CascadiaではPBO(Plate Boundary Observatory)の歪計データを用いた統計解析により、スロースリップイベントが潮汐応答を示すことが知られている[Hawthorne & Rubin, 2010]。そこで本研究では、GNSSを用いて検出された南海トラフでの短期スロースリップイベント[Nishimura et al., 2013]に対して、AIST(Advanced Industrial Science and Technology)のboreholeで観測された歪計のデータを用いて、Hawthorne & Rubin, 2010と同様の統計解析を試みた。

それぞれのイベントについて、プレート境界上での応力の計算にはNishimura et al., 2013で推定された断層パラメータを用いた。海洋潮汐による応力テンソルはNAO.99b [Matsumoto et al., 2000]を用いて求めた理論海洋潮汐にグリーン関数[Okubo & Tsuji, 2001]を掛け併せることで求め、また、固体潮汐による応力テンソルはTamura [1987]のポテンシャルを用いて求めた。

SSE前後の期間のデータを用いることで生データからノイズとなる要素を取り除き、その加工した歪みデータと上記で計算した潮汐による剪断応力の位相を比較した。加工データから求めた歪みレートと、速度強化摩擦則に基づいて剪断応力から予測される歪みレートは整合的であり、このことはSSE発生域での摩擦パラメータを制約できる可能性を示唆している。また、本研究の結果は、数kPaの応力擾乱が沈み込み帯遷移領域での滑り速度に影響をあたえることも示唆するものである。

キーワード：歪計データ、ゆっくり滑り、潮汐応答

Keywords: strain data, slow slip, tidal modulation

Earthquake swarms along the Oaxaca segment of the Mexico subduction zone and relationships to slow slip phenomena

*Michael R Brudzinski¹, Shannon Fasola¹, Robert Skoumal¹

1.Miami University Oxford

Earthquake swarms are thought to differ from traditional mainshock-aftershock sequences due to a separate driving processes such as slow slip or fluid flow. Several recent studies have suggested that tracking earthquake swarms may provide an indication of broader fault movement, which could eventually result in triggering of larger earthquakes. We utilize waveform correlation techniques to enhance the detection and characterization of earthquake swarms. We focus on the Oaxaca region of the Mexico subduction zone where a locally deployed joint seismic-GPS network has been maintained for 10 years. This network has previously been used to identify and locate many episodes of slow slip and nonvolcanic tremor across the study region. The improved temporal and spatial characterization of the earthquake swarms will be compared with the patterns of slow slip and nonvolcanic tremor to investigate the potential physical relationships between these different aspects of fault slip.

伊豆弧を構成する岩石の摩擦特性とその房総スロースリップに対する意義

Frictional property of rocks in the Izu forearc: implications for the Boso slow slip events

*廣瀬 丈洋¹、兵東 玄威²、齋藤 実篤³*Takehiro Hirose¹, Geni Hyodo², Saneatsu Saito³

1.国立研究開発法人海洋研究開発機構 高知コア研究所、2.広島大学大学院理学研究科、3.国立研究開発法人海洋研究開発機構

1.Kochi Institute for Core Sample Research, JAMSTEC, 2.Graduate School of Science, Hiroshima University, 3.Japan Agency for Marine-Earth Science and Technology

As different from the Nankai and Tohoku subduction zones, island-arc components composing the Izu arc subducts beneath the Kanto region. The collision and subduction of the Izu arc into the Kanto region could result in occurring the different type of earthquakes, including seismic slip (e.g., the 1923 great Kanto earthquake) and aseismic creep (i.e., the Boso slow slip events). Based on a source location map of the Kanto earthquake and the Boso SSEs (e.g., Hirose et al., 2014), the seismic and aseismic slip at the Kanto region seems to generate side by side at almost same depth, probably nearly same P-T conditions. We thus hypothesis that the different types of slips arise from different materials of the Izu arc.

To address this hypothesis, we have performed friction experiments on five types of rocks from the Izu forearc at temperature of 300°C (nearly seismogenic condition), confining pressure of 156 MPa and fluid pressure of 60 MPa using a high P-T gas medium apparatus at AIST. Rock types used in this study were marl, boninite, andesite, antigorite and chrysotile serpentinites that were recovered by Leg 125, Ocean Drilling Program from the Izu forearc. Considering the direction of plate motion, igneous rocks composing the arc is expected to be subducted into the hypocentral area of the Kanto earthquake, while serpentinite appeared as a diapir in the forearc is to be subducted into the area where the Boso SSEs occur. In the experiments, we fixed the temperature and pressure conditions to investigate the difference in slip behavior between the rock types.

In the experiments we conducted velocity-stepping tests at slip rates of 0.1-1 $\mu\text{m/s}$. At the experimental condition, serpentinites exhibited velocity strengthening behavior. In contrast, marl, boninite and andesite characteristically showed a periodic stick-slip behavior. Slip duration of the stick-slip events was an order of seconds, three orders of magnitude longer than the ideal slip duration of stick-slip event as expected from the stiffness and mass of the apparatus. We thus called such slip behavior as "slow stick-slip". Linear relationship between the slip duration and the stress drop of slow stick-slip hold for the observed slow stick-slip events, except for the event of marl sample of which the relationship shifted from linear to cubic with displacement. The linear relationship between the duration and the stress drop is consistent with that between the duration and the seismic moment of slow earthquakes in nature (Ide et al., 2007), as the stress drop is proportional to the seismic moment. The result implies that the Boso SSEs may be hosted by igneous rocks (e.g., boninite or andesite) composing the Izu arc, rather than serpentinite which is often considered as a source material for slow earthquakes. However the result should be taken carefully, because whether slow sticks-slip occurs or not depends on the balance between the stiffness of fault surrounding medium and the critical stiffness which is defined by effective normal stress and friction parameters of fault materials. To connect the slow stick-slip observed in laboratory with slow earthquake in nature, it is necessary to consider the coupling between the stiffness components.

キーワード：スロースティックスリップ、房総スロースリップ、摩擦

Keywords: slow stick slip, the Boso SSEs, friction

Constraints on friction, dilatancy, hydraulic diffusivity, and effective stress from low-frequency earthquake rates on the deep San Andreas Fault

*Nicholas M Beeler¹, Amanda Thomas², Roland Burgmann³, David Shelly⁴, Terry Tullis⁵

1.USGS Earthquake Program, 2.University of Oregon, 3.University of California Berkeley, 4.USGS Volcano Program, 5.Brown University

Similar to their behavior on the deep extent of some subduction zones, families of recurring low-frequency earthquakes (LFE) within zones of non-volcanic tremor on the San Andreas fault in central California show strong sensitivity to stresses induced by the tides. Taking all of the LFE families collectively, LFEs occur at all levels of the daily tidal stress, and are in phase with the very small, ≤ 200 Pa, shear stress amplitudes while being uncorrelated with the ~ 2 kPa tidal normal stresses. Following previous work we assume LFE sources are small, persistent regions that repeatedly fail during shear within a much larger scale, otherwise aseismically slipping fault zone and consider the constraints on two different models of the fault slip: 1) that the correlation of LFE occurrence reflects modulation of the fault creep rate by the tidal stresses, and 2) that creep occurs episodically, triggered by the tides. With these models we examine the predictions of laboratory-observed rate-dependent dilatancy associated with frictional slip. The effect of dilatancy hardening is to damp the slip rate, so high dilatancy under undrained pore pressure reduces triggering of slip and modulation of slip rate by the tides. The undrained end-member models produce: 1) no sensitivity to the tidal normal stress, as first suggested in this context by *Hawthorne and Rubin [2010]*, and 2) fault creep rate or earthquake rate in phase with the tidal shear stress. For these models, the observed tidal correlation constrains the hydraulic diffusivity to be less than about 1×10^{-6} /s and the product of the friction and dilatancy coefficients to be at most 5×10^{-7} in the LFE source region. The product is more than an order of magnitude smaller than observed at room temperature for talc, an extremely weak and weakly dilatant material. This may reflect a temperature dependence of the dilatancy and friction coefficients, both of which are expected to tend towards zero at elevated temperatures at the brittle-ductile transition. Alternatively, in the absence of dilatancy the ambient effective normal stress would be no more than about 50 kPa. In summary, for friction models that have both rate-dependent strength and dilatancy rate-dependence, the observations require intrinsic weakness, low dilatancy, and lithostatic pore fluid pressures.

Keywords: low frequency earthquake, friction, tremor

Two effects of slow earthquakes on large megathrust earthquakes: Triggering and facilitating of coseismic slip

Two effects of slow earthquakes on large megathrust earthquakes: Triggering and facilitating of coseismic slip

*伊藤 喜宏¹、Ikari Matt²

*Yoshihiro Ito¹, Matt J Ikari²

1.京都大学防災研究所、2.ブレーメン大学

1.Disaster Prevention Research Institute, Kyoto University, 2.MARUM, University of Bremen

We propose that slow earthquakes may have two effects on ordinary megathrust earthquakes, especially in the shallow subduction zone. The first effect is triggering of coseismic rupture by slow slip events; this is well modeled in previous work. The second is facilitation of coseismic slip on a fault which is experiencing slow slip. The fault hosting ongoing slow slip may be more easily induced to slip coseismically if a dynamic rupture from a large earthquake propagates onto the fault.

Before the 2011 Tohoku-Oki earthquake, two shallow episodic tremor and slip events (ETS) were observed in the same area of the 2011 mainshock near the Japan Trench, where the huge coseismic slip exceeding 30 m occurred. The first ETS event occurred over a week in November 2008 and included a slow slip event that exhibited an equivalent moment magnitude of 6.8. Shortly prior to termination of the slow slip, a M6 earthquake was induced by the slow slip event at the down-dip edge of the slow slip rupture area. The second ETS event was observed from the end of January 2011 until just before the 2011 Tohoku-Oki earthquake and exhibited an equivalent moment magnitude of 7.0. This slow slip event induced the largest foreshock (M7.3 on March 9) and probably triggered the March 11 mainshock of the 2011 Tohoku-Oki earthquake. Both of the ETSs clearly trigger interplate earthquakes on the plate interface.

The difference between 2008 and 2011 ETSs is whether they continued or ceased before they induced large interplate earthquakes. To investigate the effect of ETS on coseismic slip occurring on the same fault, we performed laboratory friction experiments on simulated fault gouges. We observed that increases in sliding velocity could induce slip-weakening behavior, which overwhelms the velocity dependence resulting in large overall weakening. Therefore, a fault which is experiencing a transient slip or slow earthquakes may be more easily induced to slip coseismically if a dynamic rupture from large earthquake propagates onto the fault.

キーワード：スロー地震、巨大地震、岩石実験

Keywords: slow earthquake, Megathrust event, rock experiment

The Hydrologic, Metamorphic, and Frictional Habitat of Shallow Slow Earthquakes

*Demian M Saffer¹, Laura Wallace², Hiroko Kitajima³, John Leeman¹, Matt Ikari⁴, Chris Marone¹, Marco Scuderi⁵

1.The Pennsylvania State University, 2.Univ. of Texas Institute for Geophysics, 3.Texas A&M University, 4.MARUM Centre for Marine Environmental Sciences, 5.Sapienza Univ. of Rome

Slow slip events (SSE) and very low frequency earthquakes (VLFE) in the outermost forearc of subduction zones demonstrate that unstable slip nucleates at shallower depths and nearer the trench than previously recognized. These events provide an opportunity to unravel the physical processes governing the nature of slip on subduction megathrusts; their source regions are accessible by drilling and well-imaged by geophysical surveys, enabling investigation of the properties and state of the plate interface. Here, we describe recent drilling, modeling, and laboratory results that, collectively, advance our understanding of the habitat of these events.

Estimates of in situ pore fluid pressure obtained by combining laboratory measurements on core samples with P-wave velocities from regional geophysical surveys show that the slow earthquake source regions are highly and locally overpressured, with pore pressures 75-90% of lithostatic. Kinetic models of smectite-illite transformation show that the reaction and peak fluid release occur mostly updip of the slow earthquake source areas; this may contribute to fluid overpressure, but is unlikely to be the primary driver. Laboratory frictional experiments on samples from subduction faults document primarily velocity-strengthening behavior, suggesting that nucleation of unstable slip is unlikely. However, a minimum in friction rate dependence ($a-b$) occurs at sliding velocities of $\sim 1-10 \mu\text{m s}^{-1}$, and we note increasing rate weakening with increased quartz content. Additionally, slip-weakening trends in these materials occur over larger distances (several mm) than commonly used to define frictional rate dependence, and are quantitatively consistent with several characteristics of slow earthquakes.

The emerging picture is that VLFE occur in a zone of highly overpressured fluids, low stress, and transitional frictional behavior. Although illitization is largely complete updip of the events, clay dehydration may augment fluid overpressures generated by disequilibrium compaction, and the accompanying release of SiO_2 may lead to greater tendency for unstable slip. Taken together, elevated pore fluid pressure and low effective normal stress, coupled with a minimum in frictional rate dependence at slow slip rates likely produces a fault zone with transitional frictional stability and reduced rigidity, favoring long rise times and slow rupture.

Keywords: Slow Earthquakes, Pore Pressure, Friction

流体の3次元移動とそのスロー地震の空間変化への示唆

3D migration of fluid and its implications for the spatial variation of slow earthquakes

*森重 学¹、van Keken Peter²

*Manabu Morishige¹, Peter E. van Keken²

1.京都大学大学院理学研究科附属地球熱学研究施設、2.カーネギー研究所

1.Institute for Geothermal Sciences, Graduate School of Science, Kyoto University, 2.Carnegie Institution for Science

In recent years, slow earthquakes have been studied extensively because of its importance for better understanding of interplate slip behavior in the subduction zone. At least in southwest Japan and Cascadia where relatively dense seismic and geodetic observations are available, we can clearly see the spatial variation of the activities of slow earthquakes. In southwest Japan, non-volcanic tremor may not be active around Kii Channel and Ise Bay, where the geometry of subducting Philippine Sea Plate changes significantly. In Cascadia, the amount of slip due to slow slip events is largest beneath Port Angeles where we can see the bend of the subducting Juan de Fuca Plate. These observations suggest a possible relationship between slab geometry and the activities of slow earthquakes. Considering that fluid may play an important role in generating slow earthquakes, one explanation for it is that fluid released from the subducting slab migrates in 3D due to complex slab geometry and it leads to the along-arc variation in porosity.

To investigate 3D fluid migration due to complex slab geometry, we construct 3D subduction zone models based on finite element approach. The model domain is divided into crust, subducting slab, and mantle wedge. Mantle wedge is subdivided into a thin serpentinite layer just above the slab and the remaining part. We assume that the serpentinite layer has permeability anisotropy so that the fluid can move nearly parallel to the slab surface and reach the region where slow earthquakes occur. We first compute matrix flow and temperature. Matrix flow is computed only in the mantle wedge and temperature is computed for the whole model domain. Next, we compute fluid migration in the mantle wedge. We assume that fluid migrates as porous flow. 3D fluid migration arises from the combined effects of permeability anisotropy and complex slab geometry.

For a simple oblique subduction case, we find that fluid moves nearly parallel to the maximum-dip direction of subducting plate, not subparallel to the direction of plate motion. For the case with slab geometry similar to that of Cascadia, the fluid concentrates around the bend of the slab, which results in the increase of porosity there. This may help explain the observed along-arc variation in the slow slip events in Cascadia. Our results show that 3D fluid migration may have a strong impact on the spatial variation of slow earthquakes.

キーワード：3次元流体移動、沈み込み帯、スロー地震

Keywords: 3D fluid migration, subduction zone, slow earthquakes

Toward unified source model of seismic phenomena

Toward unified source model of seismic phenomena

*矢部 優¹、井出 哲¹

*Suguru Yabe¹, Satoshi Ide¹

1. 東京大学大学院理学系研究科地球惑星科学専攻

1. The University of Tokyo, Department of Earth and Planetary Science

Seismic phenomena on the plate interface are diverse, including ordinary earthquakes, shallow and deep slow earthquakes, and stable slip. Ordinary earthquake, which is characterized by power-law statistics, and slow earthquake have different scaling relation between seismic moment and duration of the event. The M9 Tohoku earthquake in 2011 provides us interesting observation about the hierarchical structure of ordinary earthquakes. Foreshocks and aftershocks on the plate interface occurred only at the area where seismicity has been observed so far. This observation suggests that hierarchical structure is stick to space. This view of seismic source is similar to the model by Ando et al. (2010, 2012) and Nakata et al. (2011), which reproduce the behavior of slow earthquakes. In their model, brittle patches are distributed on the ductile background. Nakata et al. (2011) showed that their model could reproduce both ordinary earthquake and slow earthquake with different density of brittle patches. However, Nakata et al. (2011) did not show the detail condition how slip behavior of the fault transit from ordinary earthquake to slow earthquake. This study will investigate how this boundary is determined. For easy understanding, we use a 2D model space (line fault) with rate and state friction, which can explain the slip behavior of rock at slow slip speed, although Nakata et al. (2011) used slip-weakening law with Newtonian rheology as friction law. We calculate quasi-static elastic stress interactions between sub-faults with a cyclic boundary condition and radiation damping at a prescribed seismic speed. Frictional parameter (a and b) was set heterogeneously on the fault as either velocity weakening (VW, $a-b < 0$) or velocity strengthening (VS, $a-b > 0$), but characteristic length (D_c) was distributed uniformly. We tested bimodal distributions of frictional parameter. The distribution of frictional parameter is characterized by the length of cyclic unit L and the ratio h of VW region within the fault. The stress loading by the plate is characterized by stiffness k . We have tested many sets of h and k , and have investigated the slip behavior. As a result, three types of slip behavior are observed, (i) stable slip, (ii) seismic slip in VW regions and afterslip in VS regions, and (iii) entire seismic slip. When h is small, the size of a VW region is smaller than the nucleation size of constant-weakening regime ($a/b=5/6$ in our study, Rubin and Ampuero, 2005), and slip occurs stably. Stable slip also occurs with a sufficiently large k . When k is below a critical stiffness, slip in VW regions is accelerated to the seismic speed. The boundary between (ii) and (iii) is determined by whether slip in VS regions exceeds D_c , accelerated by seismic slip in the adjacent VW regions. When h is small, slip in VS regions does not reach D_c and the decrease of state variable is small, before the termination of the seismic slip in the VW regions. Later, relatively slow slip occurs in VS regions as an afterslip. When h is large, slip in VS regions exceeds D_c and state variable decreases rapidly, before the termination of seismic slip in the VW region. Therefore, the slip in VS regions is also accelerated to the seismic speed, and the entire fault slips seismically at the same time. The boundary between the regimes (ii) and (iii) shifts to smaller h when k is decreased. Given that small randomness exists in the bimodal distributions in the regime (ii), seismic slip in VW regions occurs independently separated by slowly slipping VS regions. These successive slip events occurring in a short period appear to be a single event with almost constant moment rate function, which looks like a slow earthquake. On the other hand, the entire seismic slip in the

regime (iii) is considered as an ordinary earthquake. Thus the boundary between regimes (ii) and (iii) separates two modes of seismic slip.

キーワード：Heterogeneity、Earthquake、Source model

Keywords: Heterogeneity, Earthquake, Source model

ヒクラング沈み込み帯における長期・短期的スロースリップと大地震との相互作用モデル
Modeling long- and short-term slow-slip events and their interaction with large earthquakes along the Hikurangi subduction zone

*芝崎 文一郎¹、Wallace Laura²、伊藤 喜宏³、松澤 孝紀⁴

*Bunichiro Shibazaki¹, Laura Wallace², Yoshihiro Ito³, Takanori Matsuzawa⁴

1.建築研究所国際地震工学センター、2.Institute for Geophysics, University of Texas at Austin、3.京都大学防災研究所、4.防災科学技術研究所

1.International Institute of Seismology and Earthquake Engineering, Building Research Institute, 2.Institute for Geophysics, University of Texas at Austin, 3.Disaster Prevention Research Institute, Kyoto University, 4.National Research Institute for Earth Science and Disaster Prevention

Recent geodetic observations revealed the occurrence of various slow slip events (SSEs) along the Hikurangi subduction plate interfaces (Wallace and Beavan, 2010). Long-term SSEs with a duration of 1.5 years (e.g., Manawatu SSEs) occur at the deeper portion of the Hikurangi subduction zone, and shallow short-term SSEs with a duration of 1-3 weeks occur along the northern and central parts of the subduction zone. One of the fundamental questions is how SSEs interact with large earthquakes. In the present study, we performed quasi-dynamic modeling on short-term and long-term SSEs and their interaction with large earthquakes along the Hikurangi subduction zone. We used a rate- and state-dependent friction law with a cut-off velocity to the evolution effect (Shibazaki and Shimamoto, 2007). We investigated a realistic configuration of the plate interface. On the basis of the study on interseismic coupling by Wallace and Beavan (2010), we set the seismogenic zone where $a-b$ is negative. The long term average relative slip velocity of each element was fixed at 4.5 cm/year for simplicity.

We set both the Manawatu and Kapiti SSE regions at the deeper extension of the seismogenic zone. The activity of Kapiti SSEs changes significantly during a cycle of large earthquakes. When large earthquakes approach, slip velocities increase at the deeper extension of the seismogenic zone. Consequently, slip velocities of the Kapiti SSEs at the deeper extension of the seismogenic zone increase. During a large earthquake, coseismic slips occur at the Kapiti SSE zone, but the occurrence of SSEs is subsequently restrained for some time. We also developed a model which investigated subducting seamounts in the northern segment of the Hikurangi subduction zone. The effective stress is assumed to be very high in the region of seamounts. The seamounts act as barriers of slow slip but between seamounts slips propagate to the shallow fault zones. Comparison between our results and observations will be necessary to develop a more realistic model of SSEs in this region.

キーワード：長期的・短期的スロースリップ、ヒクラング沈み込み帯、モデル化、大地震

Keywords: Long- and short-term slow slip events, The Hikurangi subduction zone, Modeling, Large earthquakes

スロースリップを起こす断層面上の摩擦パラメータ推定法 -アンサンブルカルマンフィルタを用いて-

Numerical experiments on estimation method of frictional parameters on the SSE fault
-Through Ensemble Kalman Filter-

*奥田 亮介¹、平原 和朗¹、宮崎 真一¹、加納 将行²、大谷 真紀子²

*Ryosuke OKUDA¹, Kazuro Hirahara¹, SHINICHI MIYAZAKI¹, Masayuki Kano², Makiko Ohtani²

1.京都大学大学院理学研究科、2.東京大学地震研究所

1.Graduate School of Science, Kyoto University, 2.Earthquake Research Institute, University of Tokyo

海溝型地震震源域の深部プレート境界上で発生する、スロースリップイベント(SSE)の活動は、海溝型大地震発生の前に変動する可能性が指摘されており(Peng and Gomberg, 2010)、SSEを引き起こすプレート境界面の摩擦特性を知ることは、海溝型大地震の発生を知る上でも重要な鍵を握る。我々の最終目標は、GNSSによって得られたSSE発生時の地表での変位データに対して、データ同化の手法の一つであるアンサンブルカルマンフィルタ(EnKF)を用いることによりSSE断層面上のすべり発展と摩擦パラメータを推定し、海溝型地震の発生の予測に役立てることにある。本研究では、シミュレーション計算によって得られたSSE発生時の断層面上のすべり速度や地表観測データに誤差を加えた模擬データを作成し、EnKFを用いて数値実験を行い、推定可能性について議論した。

まず、均質半無限弾性体中の深さ20-40kmのプレート境界上に傾斜断層を設定した。断層面上の摩擦力は速度状態依存構成則に従うものとし、また発展則にはスローネス則を用い、準動的計算ですべり速度の時空間発展を求めた。本研究では、摩擦パラメータA[kPa], B[kPa], L[mm]に対して、 $A - B < 0$ (速度弱化)かつ摩擦パラメータによって決まる臨界半径に対する断層のアスペリティの半径の比が1より少し小さい領域(条件付安定すべり域)となるように摩擦パラメータを設定することにより、平均発生間隔約6ヶ月のSSEを再現する力学的モデルを作成した。

本研究では、このモデルと設定した真値、観測値(模擬データ)を用いてEnKFを用いた断層面上の摩擦パラメータおよびすべり速度・状態変数の推定についての数値実験を行う。EnKFは、力学的モデルの計算によって得られた値(予報値)を、各タイムステップで観測値とそれらの分散共分散行列を用いて統計的に修正することで、最適な値(解析値)を推定する手法である。この分散共分散行列は初期値に乱数を与えて作った大量のアンサンブルメンバーを計算することで得られる。

まず、断層面上でのすべり速度をデータとした場合の実験結果から、SSE発生前後での断層面上でのすべりの浸透や広がりをとらえる観測点配置が必要であることが分かった。また、実験を行う中で断層モデルの不確実性を表すシステムノイズは可変にする必要があり、第一推定値(初期値)はより安定すべりに対応する摩擦パラメータ値にした方が良かったことが分かった。さらに、この結果を基に、実際の場合に対応する地表観測点の場合に必要な観測点密度や、偏った観測点分布に対する推定可能性についての実験を行い、実際に観測されているSSE域での観測データに対して、本手法の適用可能性を議論した。その結果、豊後水道や東海沖SSEの地域には適用できる可能性があり、今後これらの地域について数値実験による検証を行う必要がある。

キーワード：アンサンブルカルマンフィルタ、スロースリップイベント

Keywords: Ensemble Kalman Filter, slow slip event