

The unique role of airborne in situ observations in identifying and characterizing stratosphere-troposphere exchange (STE)

The unique role of airborne in situ observations in identifying and characterizing stratosphere-troposphere exchange (STE)

\*Pan Laura<sup>1</sup>

\*Laura Pan<sup>1</sup>

1. National Center for Atmospheric Research

1. National Center for Atmospheric Research

*In situ* observations play a unique role in characterizing the linkage between dynamical processes of all scales and atmospheric composition. Many of these processes are not resolved by satellite observations, and their representations in global chemical climate models are yet to be examined. In this talk, I will present a set of examples using the data from some recent airborne campaigns, including those over the continental US and in the tropics. The examples focus on observations in the upper troposphere and lower stratosphere from high-flying research aircraft NCAR Gulfstream V (GV), NASA DC-8, ER-2 and the Global Hawk.

## Small-scale wind fluctuations in the tropical tropopause layer from aircraft measurements : relationship with clouds and convection and impact on vertical mixing

\*Aurelien Podglajen<sup>1</sup>, Leonhard Pfister<sup>2</sup>, Eric J Jensen<sup>2</sup>, Thaopaul V Bui<sup>2</sup>, Jonathan Dean-Day<sup>2</sup>, Joan Alexander<sup>3</sup>, Albert Hertzog<sup>1</sup>, Bernd Karcher<sup>4</sup>, Riwal Plougonven<sup>1</sup>, William Randel<sup>5</sup>

1. Laboratoire de Météorologie Dynamique, Ecole Polytechnique, 2. NASA Ames Research Center, 3. NorthWest Research Associates CoRA Office, 4. DLR, 5. National Center for Atmospheric Research

Turbulent vertical mixing in the tropical tropopause layer (TTL) is poorly known, although it could make a substantial contribution to the heat and tracer transport budgets in that part of the atmosphere. Past observations of small-scale turbulence in the TTL with Radar and radiosondes have been limited to a few tropical locations. Recently, during the ATTREX (Airborne Tropical TROPopause EXperiment) and POSIDON (Pacific Oxidants, Sulfur, Ice, Dehydration, and cONvection) campaigns, in situ measurements from scientific aircraft have provided extensive sampling of small-scale motions over the tropical Pacific, between 14 and 20 km.

In this presentation, high-frequency meteorological observations collected during those recent aircraft campaigns are used to characterize the occurrence of ‘ ‘clear air turbulence’ ’ in the TTL. Turbulent bursts are highly intermittent, and are more frequent and intense in the lower TTL and near deep convection. The relationship between turbulent bursts and cirrus clouds is quantified. Finally, the impact of "turbulent" bursts on vertical mixing is estimated and contrasted between convective and non convective regions. The estimated diffusivities are compared with those predicted by turbulent diffusion schemes used in operational analyses systems.

Keywords: tropical tropopause layer, turbulent mixing, aircraft measurements

## ユーラシア大陸上空の対流圏界面領域におけるCH<sub>4</sub>の変動と炭素・水素同位体比に基づいたその解釈

### Methane variations observed in the upper troposphere/lowermost stratosphere over the Eurasian Continent and their interpretation based on the carbon and hydrogen isotopic ratio

\*藤田 遼<sup>1</sup>、森本 真司<sup>1</sup>、稲飯 洋一<sup>1</sup>、青木 周司<sup>1</sup>、町田 敏暢<sup>2</sup>、澤 庸介<sup>3</sup>、松枝 秀和<sup>3</sup>、丹羽 洋介<sup>3</sup>、坪井 一寛<sup>3</sup>、勝又 啓一<sup>2</sup>、梅澤 拓<sup>2</sup>、中澤 高清<sup>1</sup>

\*Ryo Fujita<sup>1</sup>, Shinji Morimoto<sup>1</sup>, Yoichi Inai<sup>1</sup>, Shuji Aoki<sup>1</sup>, Toshinobu Machida<sup>2</sup>, Yousuke Sawa<sup>3</sup>, Hidekazu Matsueda<sup>3</sup>, Yosuke Niwa<sup>3</sup>, Kazuhiro Tsuboi<sup>3</sup>, Keiich Katsumata<sup>2</sup>, Taku Umezawa<sup>2</sup>, Takakiyo Nakazawa<sup>1</sup>

1. 東北大学大学院理学研究科大気海洋変動観測研究センター、2. 国立環境研究所、3. 気象庁気象研究所

1. Center for Atmospheric and Oceanic Studies, Graduate School of Science, Tohoku University, 2. National Institute for Environmental Studies, 3. Meteorological Research Institute

北半球高緯度域において、CH<sub>4</sub>の時空間変動およびその放出源を明らかにするために、航空機を用いたキャンペーン観測がこれまで複数回行われてきた。しかし、CH<sub>4</sub>濃度と同時にその放出・消滅過程の情報を含む炭素・水素同位体比 ( $\delta^{13}\text{C}$ ,  $\delta\text{D}$ ) を対流圏界面領域 (上部対流圏(UT)/成層圏最下部(LMS)領域) で系統的に観測した例はこれまでに僅かである。本研究は、2012年4月からパリ (モスクワ) -羽田 (成田) 間において民間航空機上で採取された大気試料を分析して、北半球高緯度域のUT/LMS領域におけるCH<sub>4</sub>濃度、 $\delta^{13}\text{C}$ ,  $\delta\text{D}$ の時空間変動の実態を明らかにした。LMSでは、CH<sub>4</sub>濃度と $\delta^{13}\text{C}$ ,  $\delta\text{D}$ は明瞭な逆位相の変動を示し、CH<sub>4</sub>濃度 ( $\delta^{13}\text{C}$ ,  $\delta\text{D}$ ) は11-1月に極大 (極小) を、3-5月に極小 (極大) を示した。この変動原因としては夏から秋にかけて低緯度側から対流圏起源の空気塊 (高濃度かつ低同位体比) が流入すること、冬から春にかけてブリューワー・ドブソン循環に伴って成層圏深部起源 (低濃度かつ高同位体比) の空気塊が沈降することが考えられた。客観再解析データ (ERA-Interim) を用いて後方流跡線解析を実施したところ、観測された $\delta^{13}\text{C}$ と $\delta\text{D}$ は、観測地点における空気塊の渦位よりも、2-3週間前の空気塊地点における渦位との相関が、全ての季節について高いことが示された。このことは、各季節の中で重い同位体比を持つ空気塊は大気採取地点に対してより高高度/高緯度側に、軽い同位体比を持つ空気塊はより低高度/低緯度側に起源があることを示唆している。また、CH<sub>4</sub>濃度と $\delta^{13}\text{C}$ の相関を調べることで、北半球高緯度のUT/LMS領域におけるCH<sub>4</sub>の消滅過程についての解釈を試みた。CH<sub>4</sub>濃度と $\delta^{13}\text{C}$ への同位体分別効果を検討した結果、UTではCH<sub>4</sub>と水酸基ラジカル (OH) との反応による消滅が支配的である一方で、LMSではOHによる消滅に加えて、塩素ラジカル (Cl), 励起酸素原子 ( $\text{O}(^1\text{D})$ ) との消滅反応の影響を受けている可能性が示唆された。

キーワード: メタン、同位体、対流圏界面領域、後方流跡線解析

Keywords: methane, isotopic ratio, UT/LMS region, backward trajectory analyses

## Tropical Tropopause Dynamics (TTD) Campaigns under CAWSES India Phase II over Indian region: Overview and Scientific Accomplishments

\*Venkat Ratnam Madineni<sup>1</sup>, Sunil Kumar S.V., Parameswaran K, Krishna Murthy B.V., Jayaraman A.

1. National Atmospheric Research Laboratory

In recent years the ‘Tropical Tropopause’ has received immense scientific attention because of its sensitivity to anthropogenic activities leading to climate change. Several campaigns have already been conducted and also are being planned to address various issues related to it. Despite many campaigns, several scientific issues still remain unexplained. In order to address some of the issues, particularly over the Indian region, intensive observational campaigns named as the ‘Tropical Tropopause Dynamics (TTD)’ have been conducted between December 2010 and March 2014 at two stations namely Gadanki(13.5°N, 79.2°E) and Trivandrum(8.5°N, 76.9°E). This work is aimed at bringing out the importance of a sustained study on the tropical tropopause, using collocated instruments as well as complementary data from the satellites. In general, a prominent updraft prevails below and above the TTL, suggesting that deep convection is not essential for the transport of minor species across the tropopause. Sub-daily variations are observed at both the stations and the amplitude of this variation is small at Gadanki. The behavior of the cold point tropopause (CPT) at Gadanki and Trivandrum revealed that there are important differences in the CPT characteristics even within the monsoon region. Significant modulation in the tropical tropopause parameters by the prevailing tides and planetary waves is noticed. The vertical temperature gradient in the tropical tropopause layer (TTL) is related to the presence of tropical cirrus. Altitude structure of tropical cirrus in the upper troposphere is clearly associated with that of turbulence. This Indian Program is expected to provide important contributions to the international campaigns planned over Pacific and Asian region on the TTL.

Keywords: Tropical Tropopause Layer, STE processes, Campaigns



## Stratosphere-troposphere exchange over the northern Pacific Ocean using chemical reanalysis data

\*席 浩森<sup>1</sup>、藤原 正智<sup>1</sup>、宮崎 和幸<sup>2</sup>

\*Haosen Xi<sup>1</sup>, Masatomo Fujiwara<sup>1</sup>, Kazuyuki Miyazaki<sup>2</sup>

1. 北海道大学大学院 地球環境科学院、2. 独立行政法人 海洋研究開発機構 地球環境変動領域

1. Faculty of Environmental Earth Science, Hokkaido University, 2. Research Institute for Global Change, JAMSTEC

Stratosphere-troposphere exchange (STE) is one of the important factors that determine the distribution of constituents in the troposphere and stratosphere. Two-way air mass exchange between the lower stratosphere and the troposphere occurs in association with mid-latitude weather disturbances, with the net transport from the stratosphere to troposphere. Among various mid-latitude disturbances, explosive cyclones are those with very rapid surface pressure drops and cause severe weather phenomena. In this study, we investigate the role of explosive cyclones over the northern-hemisphere Pacific Ocean in the STE. We analyze ozone and carbon monoxide (CO) data from a chemical reanalysis data set called the Tropospheric Chemical Reanalysis data (TCR-1).

TCR-1 is a 10-year chemical reanalysis data set for the period from 2005 to 2014. TCR-1 assimilates satellite chemistry data from the Ozone Monitoring Instrument (OMI), Aura Microwave Limb Sounder (MLS), Tropospheric Emission Spectrometer (TES), and Measurement of Pollution In The Troposphere (MOPITT), by using a global chemical transport model CHEMICAL AGCM for Study of atmospheric Environment and Radiative forcing (CHASER) driven with NCEP-DOE reanalysis data and the ensemble Kalman filter technique. NCEP-DOE reanalysis data are also used to calculate potential vorticity (PV) and to obtain TCR-1 ozone and CO data on isentropic surfaces. The definition of explosive cyclones used in this study is the one used by the Japan Meteorological Agency, that is, extra-tropical cyclones whose center-pressure drop rate is more than  $24 \text{ hPa} \times \sin(\phi) / \sin(60^\circ)$  (where  $\phi$  is latitude) within 24 hours. Both monthly mean and instantaneous 2-pvu PV curves on isentropic surfaces are used to define the tropopause. Indices for irreversible Stratosphere-to-Troposphere Transport (STT) and Troposphere-to-Stratosphere Transport (TST) are further defined using ozone and CO data to investigate quantitative impact of explosive and non-explosive cyclones over the northern-hemisphere Pacific Ocean. Explosive cyclones over the northern Pacific Ocean are observed in winter, with the maximum activity in January and February. It is found that about half of the explosive cyclones cause significant STE. In January, the average amount of STT per cyclone due to explosive cyclones is significantly greater than that due to other cyclones. It is also found that the amount of STT (TST) in years 2005-2009 is significantly smaller (greater) than that in years 2010-2014. In the presentation, we will discuss possible causes of this interannual change.

キーワード：成層圏対流圏の大気交換、オゾン、爆弾低気圧

Keywords: Stratosphere-troposphere exchange, Ozone, Explosive cyclones

## Introduction to the SPARC Reanalysis Intercomparison Project (S-RIP)

\*藤原 正智<sup>1</sup>、Gloria Manney<sup>2</sup>、Lesley Gray<sup>3</sup>

\*Masatomo Fujiwara<sup>1</sup>, Gloria L. Manney<sup>2</sup>, Lesley J. Gray<sup>3</sup>

1. 北海道大学 大学院地球環境科学研究所、2. NorthWest Research Associates、3. University of Oxford

1. Faculty of Environmental Earth Science, Hokkaido University, 2. NorthWest Research Associates, 3. University of Oxford

The climate research community uses atmospheric reanalysis data sets to understand a wide range of processes and variability in the atmosphere, yet different reanalyses may give very different results for the same diagnostics. The Stratosphere–troposphere Processes And their Role in Climate (SPARC) Reanalysis Intercomparison Project (S-RIP) is a coordinated activity to compare reanalysis data sets using a variety of key diagnostics. The objectives of this project are to identify differences among reanalyses and understand their underlying causes, to provide guidance on appropriate usage of various reanalysis products in scientific studies, particularly those of relevance to SPARC, and to contribute to future improvements in the reanalysis products by establishing collaborative links between reanalysis centres and data users. The emphasis is on diagnostics of the upper troposphere, stratosphere, and lower mesosphere. An overview of S-RIP will be presented, together with some scientific highlights.

キーワード：再解析、比較、成層圏–対流圏の諸過程とその気候への影響

Keywords: reanalysis, intercomparison, SPARC

## The stratospheric signature of warming Arctic and its impacts on mid-latitude climate change

\*Tetsu Nakamura<sup>1</sup>, Koji Yamazaki<sup>1</sup>, Kazuhira Hoshi<sup>2</sup>, Meiji Honda<sup>2</sup>, Jinro Ukita<sup>2</sup>, Ralf Jaiser<sup>3</sup>, Doerthe Handorf<sup>3</sup>, Klaus Dethloff<sup>3</sup>

1. Faculty of Environmental Earth Science, Hokkaido University, 2. Faculty of Science, Niigata University, 3. Alfred-Wegener-Institut

Recent evidence from both observations and model simulations suggests that an Arctic sea ice reduction tends to cause a winter negative Arctic Oscillation (AO) phase, which is indicative of the Arctic warming and the severe winter weather in the mid-latitude Northern Hemisphere. The negative phase of AO is often preceded by weakening of the stratospheric polar vortex (i.e., sudden stratospheric warming, SSW). We performed a time-slice experiment using a high-top AGCM, in which only the Arctic sea ice loss is responsible to altering the climate state (Nakamura et al., 2015). The results show a negative AO-like pattern that brings more heat transport into the Arctic and cold air outbreak over the mid-latitudes (positive feedback) via dynamically induced secondary circulation in the meridional plane. The simulated responses show high similarity with observed climate change signals of the recent decades, seen in an increased SSW frequency and its downward influences (Jaiser et al., 2016) as well as dynamical properties (Hoshi et al., 2017).

Such a sea ice-AO linkage largely disappears when model's stratospheric representation is artificially deteriorated (i.e., mimicking low-top model), confirming a crucial role of the stratosphere-troposphere (S-T) coupling in the current Arctic climate changes (Nakamura et al. 2016a). Even in an extreme climate of the ice-free (Blue Arctic Ocean) simulation there appears a negative AO response but the S-T coupling process becomes absent (Nakamura et al., 2016b).

The complexity arising from positive feedback mechanism of the heat transport and non-linearity of the stratospheric response may be a cause of uncertainty of the Arctic and mid-latitude climate linkage. More extensive studies about S-T coupling process will help to understand underlying mechanisms for this complexity.

*Reference: Nakamura et al. (2015), JGR, 120, 3209-3227; Nakamura et al. (2016a), GRL, 43, 3494-3501; Jaiser et al. (2016), JGR, 121, 7564-7577; Nakamura et al. (2016b), GRL, 43, 10394-10402; Hoshi et al. (2017), GRL, 44, 446-454.*

**Keywords:** Arctic sea ice retreat, Arctic Oscillation, Polar amplification, Stratosphere-Troposphere interaction, Sudden stratospheric warming, Arctic-mid-latitude climate linkage



## Lower stratospheric control of the frequency of sudden stratospheric warming events

\*Patrick Martineau<sup>1</sup>, Gang Chen<sup>1</sup>, Seok-Woo Son<sup>2</sup>, Joowan Kim<sup>3</sup>

1. UCLA, 2. Seoul National University, 3. Kongju National University

Simple atmospheric models are often used to investigate the dynamical coupling between the stratosphere and the troposphere. Several studies have examined, using such models, the sensitivity of stratospheric polar vortex variability to the upper-stratospheric relaxation temperatures. Although it is known that the lower stratosphere can act as a valve for the upward propagation of planetary-scale waves and thus a regulator for the occurrence of SSW events, the sensitivity of the model setup to lower-stratospheric temperatures was not thoroughly investigated.

We contrast in this work the sensitivity of stratospheric variability to the lower and upper stratospheric temperatures by performing parameter-sweep experiments. It is found that lower-stratospheric temperature is of prime importance to regulate the temporal variability of the vortex. Against the common intuition that a warm high-latitude polar stratosphere results in a weaker vortex and more frequent reversals of zonal-mean zonal wind, we find that a cold lower stratosphere at the pole is crucial for the occurrence of sudden stratospheric warming (SSW) events. We hypothesize that a stronger meridional temperature gradient helps to maintain a waveguide between the troposphere and the stratosphere. The wave-1 and wave-2 SSW events generated in our model runs are further studied with the transformed Eulerian mean and finite amplitude wave activity frameworks. It is shown that the evolution of SSW events in the model are qualitatively similar to SSWs seen in observations. Interestingly, while the wave activity signal propagates downward in wave-1 events, it is propagating upward in wave-2 events, hinting to different wave-mean flow interactions.

## Defining stratospheric sudden warming in climate models: Accounting for biases in model climatology

\*Seok Woo Son<sup>1</sup>, Junsu Kim<sup>2</sup>, Edwin Gerber<sup>3</sup>, Hyo-Seok Park<sup>4</sup>

1. Seoul National University, Korea, 2. Korea Meteorological Administration, Korea, 3. New York University, USA, 4. Korea Institute of Geoscience and Mineral Resources, Korea

A sudden stratospheric warming (SSW) is often defined as zonal-mean zonal wind reversal at 10 hPa and 60°N. This simple definition has been applied not only to the reanalysis data but also to climate model output. In the present study, it is shown that the application of this definition to models can be significantly influenced by model mean biases; i.e., more frequent SSWs appear to occur in models with a weaker climatological polar vortex. In order to overcome this deficiency, a tendency-based definition, is proposed and applied to the multi-model data sets archived for the Coupled Model Intercomparison Projection phase 5 (CMIP5). In this definition, SSW-like events are defined by sufficiently strong vortex deceleration. This approach removes a linear relationship between SSW frequency and intensity of climatological polar vortex in the CMIP5 models. Models' SSW frequency instead becomes correlated with the climatological upward wave flux at 100 hPa. Lower stratospheric wave activity and downward propagation of stratospheric anomalies to the troposphere are also reasonably well captured. However, in both definitions, the high-top models generally exhibit more frequent SSWs than the low-top models. Moreover, a hint of more frequent SSWs in a warm climate is commonly found.

Keywords: Stratospheric Sudden Warming, CMIP5 models

## **A mechanism to explain the variations of tropopause and tropopause inversion layer in the Arctic region during a sudden stratospheric warming in 2009**

\*Rui Wang<sup>1</sup>, Yoshihiro Tomikawa<sup>2</sup>, Takuji Nakamura<sup>2</sup>, Kaiming Huang<sup>3</sup>, Shaodong Zhang<sup>3</sup>, Yehui Zhang<sup>4</sup>, Huigen Yang<sup>1</sup>, Hongqiao Hu<sup>1</sup>

1. Polar Research Institute of China, 2. National Institute of Polar Research, 3. Wuhan University, 4. Nanjing University of Information Science and Technology

The mechanism to explain the variations of tropopause and tropopause inversion layer (TIL) in the Arctic region during a sudden stratospheric warming (SSW) in 2009 was studied with MERRA reanalysis data and GPS/COSMIC temperature data. During the prominent SSW in 2009, the cyclonic system changed to the anticyclonic system due to the planetary wave with wavenumber 2 (wave2). The GPS/COSMIC temperature data showed that, during the SSW in 2009, the tropopause height in the Arctic decreased accompanied with the tropopause temperature increase and the TIL enhancement. The variations of the tropopause and TIL were larger in higher latitudes. A static stability analysis showed that the variations of the tropopause and TIL were associated with the variations of the residual circulation and the static stability due to the SSW. Larger static stability appeared in the upper stratosphere and moved downward to the narrow region just above the tropopause. The descent of strong downward flow was faster in higher latitudes. The static stability tendency analysis showed that the strong downward residual flow induced the static stability change in the stratosphere and around the tropopause. The strong downwelling in the stratosphere was mainly induced by wave2, which led to the tropopause height and temperature changes due to the adiabatic heating. Around the tropopause, a pair of downwelling above the tropopause and upwelling below the tropopause due to wave2 contributed to the enhancement of static stability in the TIL immediately after the SSW.

Keywords: tropopause, TIL, SSW, planetary wave, static stability, residual vertical velocity

## A latitudinal dependence on the summer tropopause inversion layer and its seasonality

\*澁谷 亮輔<sup>1</sup>、佐藤 薫<sup>1</sup>、渡辺 真吾<sup>2</sup>、William Randel<sup>3</sup>

\*Ryosuke Shibuya<sup>1</sup>, Kaoru Sato<sup>1</sup>, Shingo Watanabe<sup>2</sup>, William Randel<sup>3</sup>

1. 東京大学 大学院理学系研究科、2. JAMSTEC、3. National Center for Atmospheric Research

1. Graduate School of Science, The University of Tokyo, 2. JAMSTEC, 3. National Center for Atmospheric Research

The latitude-dependent structure of the summer tropopause inversion layer (TIL) and the seasonality of the mid-latitude TIL are examined using a general circulation model (GCM) with a vertical resolution of about 300m above a 10 km height and an offline column radiative transfer model (CRM). A comparison with GPS radio occultation temperature observations shows that the GCM successfully simulates the fine structure and seasonality of the TIL.

A gradient genesis analysis for the static stability at the TIL is performed. It is shown that a large negative tendency due to the stretching effect of the vertical velocity is balanced by a large positive tendency due to the radiative effect related to water vapor in the mid-latitude summer TIL. The negative stretching effect is caused by a shallow branch of the Brewer-Dobson circulation. Given that the radiative effect of water vapor is essential for the summer TIL as suggested by previous studies, this means that the stretching effect weakens the mid-latitude summer TIL. On the other hand, the polar summer TIL is balanced with a small tendency due to both the radiative and the stretching effects, suggesting that the polar TIL is not largely affected by the stretching effect. Using CRM, an idealized mid-latitude TIL without the stretching effect is estimated assuming that vertical velocities above the TIL are the same as that at the TIL height. The magnitude of the static stability of the idealized mid-latitude TIL is quite similar to that of the real polar summer TIL. This fact suggests that the latitude-dependence of the TIL structure is at least partly explained by the shallow branch of the stratospheric circulation. In contrast, it is shown that the TIL structure in the winter mid-latitude TIL is strengthened by the stretching effect. These results indicate that the stretching effect is essential to the seasonality of the mid-latitude TIL, although the TIL itself is mainly caused by the radiative effect of the water vapor.

キーワード：対流圏界面逆転層

Keywords: Tropopause Inversion Layer

## アジアモンスーン高気圧の季節内振動の浅水系による理解

### The understanding of subseasonal variability of the Asian monsoon anticyclone as shallow water system

\*雨宮 新<sup>1</sup>、佐藤 薫<sup>1</sup>

\*Arata Amemiya<sup>1</sup>, Kaoru Sato<sup>1</sup>

1. 東京大学大学院理学系研究科地球惑星科学専攻

1. Graduate School of Earth and Planetary Science, The University of Tokyo

アジアモンスーン高気圧(以下「高気圧」)は、夏季にアジア上空の対流圏上部・成層圏下部に卓越する、モンスーンの対流に伴う熱によって形成された惑星規模の高気圧である。近年では特に圏界面を通した輸送・混合への役割が注目されているが、それに関わる高気圧周辺の力学・物理過程についての理解は未整備である。重要なテーマの一つとして季節内変動のメカニズムがある。高気圧は主に10-20日周期の振動を示し、その中では頻繁な西向き伝播がみられる。また高気圧の位置は西アジアと東アジア上空の間を遷移する二極的な特徴が知られている。本研究の目的はこのような季節内変動の特徴を理解することである。

先行研究では高気圧の季節内変動に関して二つの対照的な観点がある。一つは対流活動の時間的変動に対して高気圧が応答しているとする見方であり、もう一つは高気圧の力学の非線形的性質により、定常な強制に対しても振動的な応答が自発的に生じうるとする見方である。後者はHsu and Plumb (2000)(以後「HP00」)の用いたモデルに基づくものであり、本研究は後者の立場をとる。

本研究ではまず、HP00の用いた無次元の浅水系モデルの結果を次元量に直し、現実的なパラメタの範囲での妥当性を検証した。モデルは一定の線形緩和を加えた $\beta$ 面浅水系であり、北半球亜熱帯に定常的な正の高さ擾乱の強制を与えている。実際に現実的な緩和時間と強制中心の緯度のもとで数値計算を行い応答を調べたところ、強制の振幅の上限に関する拡張を加えることで、HP00に示された通り応答は周期的な高気圧の伝播を示した。また、伝播速度は約10-20m/sと現実の高気圧の挙動と整合的な値であった。

次に、浅水系の妥当性を再解析データを用いて調べた。ERA-Interimの2011年から2015年までの夏季のデータを用いて、等温位面上のErtel渦位(PV)、モンゴメリー流線関数(M)、および層厚(sigma)に関して高気圧の中心経度で分類したコンポジット平均をとった。高気圧がどの経度にある場合も、360Kと365KにおいてはMとsigmaの水平構造がよく似ており、それらの中心よりやや南側にPVの低い領域の中心が位置していた。この特徴は浅水系で見られた高気圧の伝播と同様であった。

これらの温位面においてMとsigmaの構造が似ていたことは、本質的に力学が順圧的である、すなわち浅水系で近似できる可能性を示唆している。このことを定量的に調べるために、各温位面でのMとsigmaの値の散布図を作り、線形関係で近似できる場合にその一次の係数から等価深度を推定した。その結果、散布図は単一の直線ではなく、高気圧中心に近い約35°Nを境にして南北の値を別々の直線で近似するのが最も適当であることが分かった。平均的な等価深度の値は、35°Nの南側で約60m、北側で約200-300mであった。

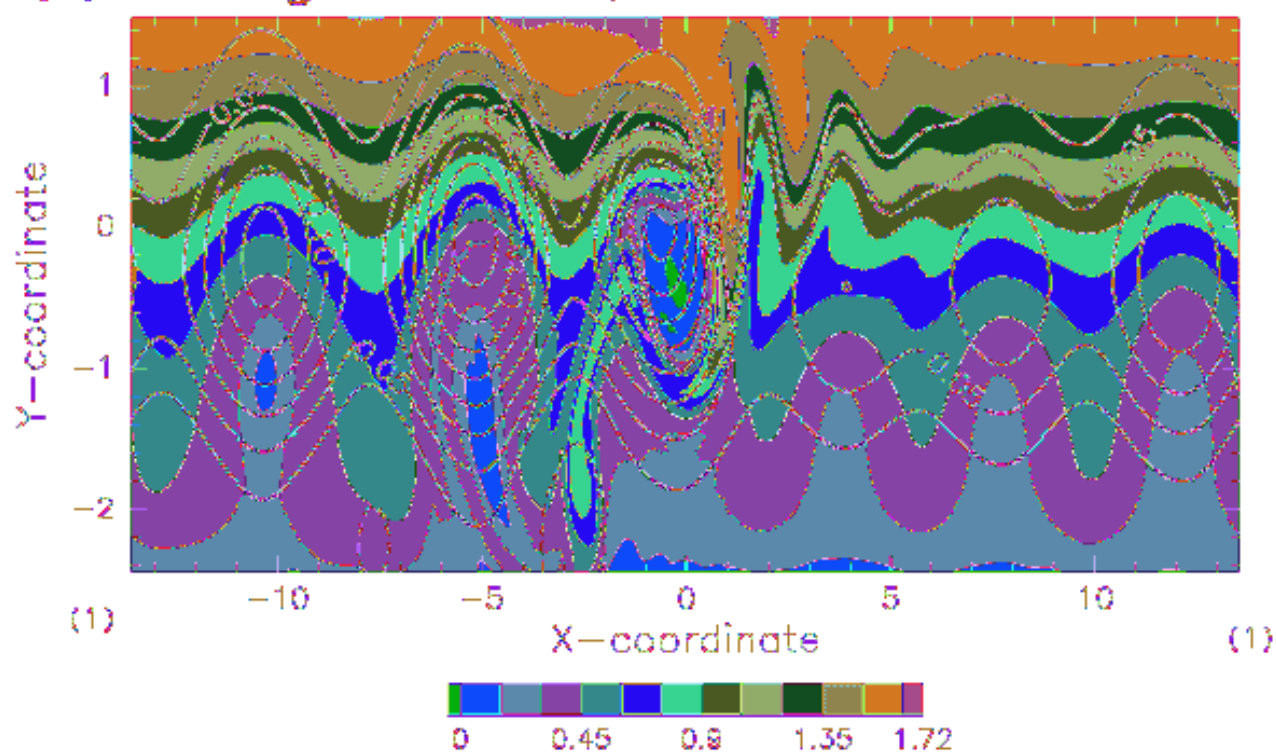
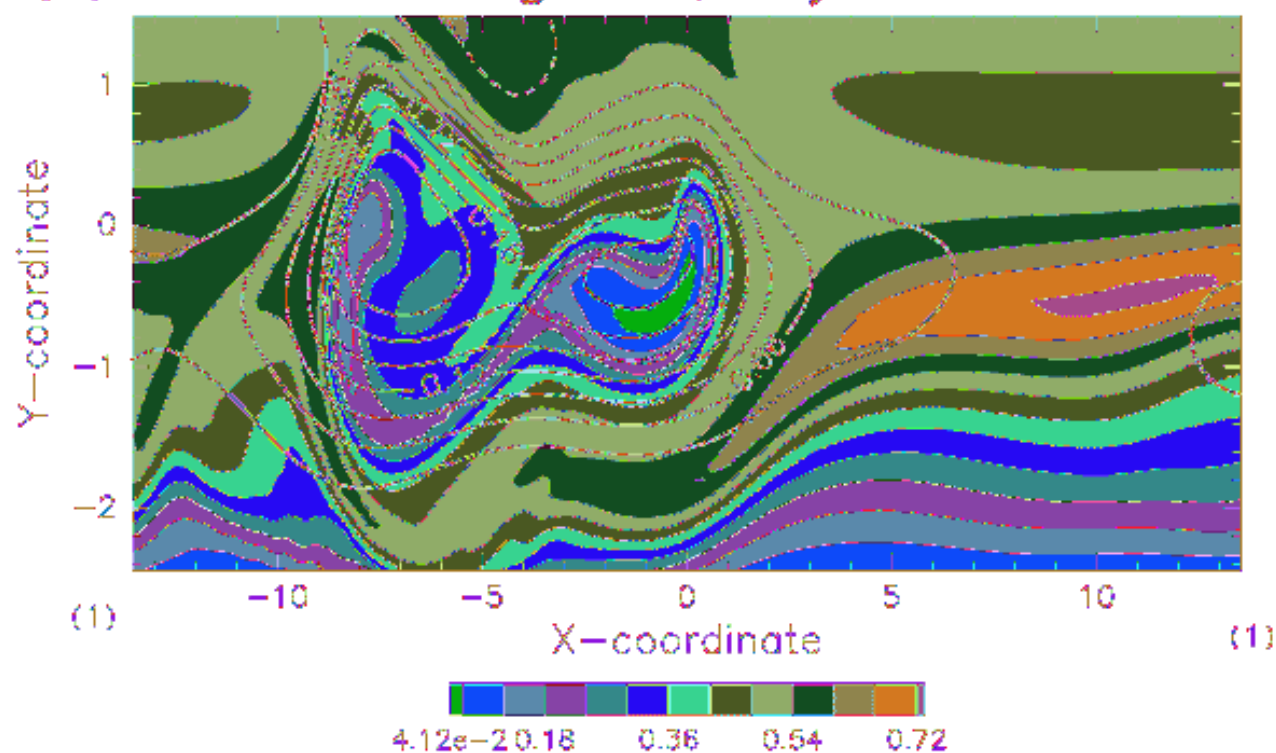
先の浅水系モデルでは等価深度を一様としていたが、以上の結果は、実際の圏界面付近の高気圧の挙動が南北で異なる等価深度の浅水系により近いことを示唆している。そこで、強制の北側で大きな等価深度を与えた浅水系を用いて、前述の数値計算を行った。その結果、周期的な解における高気圧の経度方向の構造が大きく異なっていた。ある振幅の大きさの場合における、北側で等価深度を3倍としたときの高さ擾乱とPVの構造(図b)を、等価深度一様の場合(図a)と比較して図に示す。一様の場合と異なり、等価深度を変化させた場合は高気圧の西側への伝播が途中で止まる。時系列をみると、西側に伝播した渦(PVの低い領域)が高気圧性の回転

に乗って東側に戻り、元の渦と再び一体となることが繰り返され、高さ擾乱の極大の位置は西側と東側の間を往復する。このような構造は、実際の高気圧の変動に伴う二極的な空間構造と非常によく似ている。

以上のように、本研究では、HP00の浅水系モデルを拡張することで、実際のアジアモンスーン高気圧の季節内変動の特徴である西向き伝播と二極的な経度構造の両方を現実的なパラメタのもとで再現することができた。重要なのは、このモデルで与えている強制が定常的であり、また強制以外は何ら東西構造に関する外的制約を与えていないことにある。したがってこの結果は、高気圧の季節内変動の定性的な特徴は高気圧自体の内在的なものであることを示している。定量的な観点ではもちろん、亜熱帯ジェットの高さやその惑星規模の東西構造、対流の時空間構造や陸地の影響など他の外的要因を考慮する必要がある。この研究で得られた基本的な力学の理解をもとにし、これらの要素の影響を加味した解析を行うことが、実際のアジアモンスーン高気圧の挙動の年々変動や経年変動の理解のために必要である。

キーワード：大気力学、成層圏・対流圏結合、アジアモンスーン

Keywords: Atmospheric Dynamics, Stratosphere-Troposphere Coupling, The Asian Monsoon

(a) homogeneous  $H_{eq}$ (b) three times larger  $H_{eq}$  for  $y > 0.5$ 

## Downward Influence of QBO-like Oscillation to Moist Convection in a Two-Dimensional Minimal Framework

\*余田 成男<sup>1</sup>、Bui Hoang-Hai<sup>1</sup>、西本 絵梨子<sup>1</sup>

\*Shigeo Yoden<sup>1</sup>, Hoang-Hai Bui<sup>1</sup>, Eriko Nishimoto<sup>1</sup>

1. 京都大学大学院理学研究科地球惑星科学専攻

1. Division of Earth and Planetary Sciences, Graduate School of Science, Kyoto University

A self-sustained oscillation in zonal mean zonal winds that is analogous to the equatorial quasi-biennial oscillation (QBO) was first obtained in a radiative-convective equilibrium state of a two-dimensional model by Held et al. (1993). The robustness of the QBO-like oscillation was reconfirmed by Yoden et al. (2014; hereafter, YBN14) in a two-dimensional minimal framework. High temporal-resolution outputs from YBN14's framework were analyzed by Nishimoto et al. (2016) and revealed that there appear two types of precipitation patterns as squall line and back building, depending on the magnitude of vertical shear near the surface.

In this paper, we further investigate the influence of the QBO-like oscillation on convection using the minimal framework of YBN14 with two series of parameter sweep experiments. The first series, *Model top experiments*, change the height of model from 40 km to 15 km to examine the sensitivity of the precipitation modulation to the choice of model height. In the second series, *Low-level nudging experiments*, the zonal mean zonal wind is nudged towards zero in a certain depth from the surface to remove the effect of low-level wind shear. Two typical examples of the experiments are chosen for further composite analysis to reveal the convective structures in different conditions of precipitation.

The results show that the QBO-like oscillation modulates the convection via two mechanisms related to vertical shear of the zonal mean zonal wind. Large values of shear near the surface enhance the longevity and intensity of the convective systems in the form of squall line type. On the other hand, large values of shear near the cloud top disrupt the convective structure and leads to a smaller amount of precipitation. The first mechanism seems to be dominated as the second one only be revealed when the low-level shear is nudged to some certain levels.

キーワード：QBO的振動、湿潤対流への影響、二次元の最小枠組み

Keywords: QBO-like oscillation, influence to moist convection, two-dimensional minimal framework



# Role of Stratospheric Cooling on the Tropical Troposphere and the Ocean

\*Kunihiko Kodera<sup>1</sup>, Nawo Eguchi<sup>2</sup>, Rei Ueyama<sup>3</sup>, Beatriz M. Funatsu<sup>4</sup>, Chantal Claud<sup>5</sup>

1. Institute for Space-Earth Environmental Research, Nagoya University, 2. Research Institute for Applied Mechanics, Kyushu University, 3. NASA Ames Research Center, 4. LETG-Rennes COSTEL, Université Rennes 2, 5. Laboratoire de Météorologie Dynamique, Ecole Polytechnique

Large changes in circulation have occurred around the end of 1990's in the troposphere and the ocean as well as in the lower stratosphere, such as an advancement of the onset of Asian summer monsoon, cooling of the equatorial eastern Pacific connected to the hiatus of the global warming, and cooling in the tropical lower stratosphere. Whether or not a causal relationship exists among these phenomena, is an interesting yet challenging question.

We, therefore, investigate a transient phenomenon as well as long-term change or recent trend to gain insight into the relationship between changes in the stratosphere and the ocean. For this, we select sudden cooling events in the tropical lower stratosphere during the boreal summer. Stratospheric temperature decreased in association with an increased upwelling induced by an enhancement of planetary wave activity in the SH. Increased upwelling is apparent in the UTLS region of the summer hemisphere particularly around 15N-25N, where the ascending branch of the Hadley circulation is in line with the upwelling branch of the Brewer-Dobson circulation. Because this connected zone is situated poleward of the climatological center of the ascending branch of the Hadley circulation, enhancement of the upward velocity in this region shifts the Hadley circulation poleward, which leads to an increase in the cross-equatorial surface flow from the winter to summer hemisphere. This increase of the southerlies decreases the SSTs in the equatorial eastern Pacific.

Impact of the SSTs on the lower stratosphere through changes in convective activity is well known. Adding to this, the present study suggests a possibility that a change in stratospheric circulation induces anomalous SSTs in the tropics.

Keywords: stratosphere, troposphere, Convection, Hadley circulation, Brewer-Dobson circulation

## Asymmetry and nonlinearity of the influence of ENSO on the northern winter stratosphere: Observations vs. simulations

\*Rongcai Ren<sup>1</sup>, Jian Rao<sup>1,2</sup>

1. LASG/IAP/CAS, CHINA, 2. NUIST, CHINA

This study explores the nonlinearity and the asymmetry of ENSO's influences on the northern winter stratosphere. It is revealed that the 'moderate El Niño' and the 'strong La Niña' are more efficient than the 'strong El Niño' and the 'moderate La Niña' respectively. The tropical rainfall anomalies induced by a moderate El Niño or a strong La Niña are centered over the central equatorial Pacific region near the dateline, while the convection responses to a strong El Niño or a moderate La Niña are centered farther eastward. Accordingly, the anomalous Pacific-North America wave train pattern is modulated by ENSO in a nonlinear and asymmetric way, which leads to the large nonlinear and asymmetric components of the vertical Eliassen-Palm (E-P) flux responses to ENSO in the extra-tropics. The nonlinearity and asymmetry of ENSO-stratosphere coupling are well confirmed by the long-term simulations from the CESM-WACCM. Sensitivity experiments with WACCM further reveal that the nonlinearity and asymmetry of the stratospheric responses to moderate ENSO are dominated by the inherent properties of the atmosphere. Whereas those of the stratospheric responses to strong ENSO are mainly resulted from the asymmetry of ENSO SST forcing between strong El Niño and La Niña. Furthermore, the and the "high-top" WACCM are adopted to investigate the asymmetry and the nonlinearity. It is revealed that the dominant role of the inherent properties of the atmosphere.

Keywords: Winter Stratosphere, ENSO's influences, Nonlinearity, Asymmetry

## Do stratospheric ozone measurements show large tropical width changes?

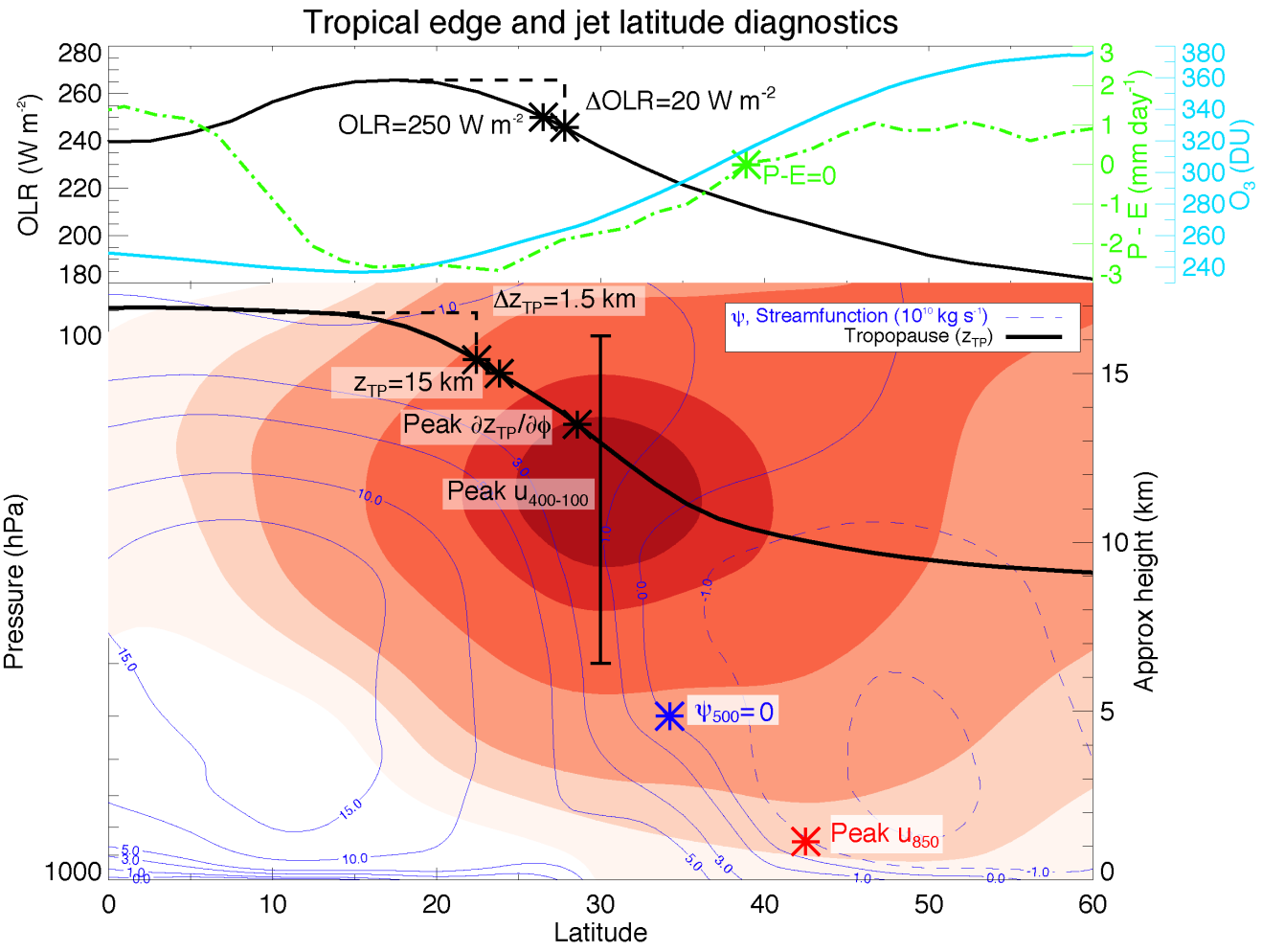
\*Sean M Davis<sup>1,2</sup>, Birgit Hassler<sup>3</sup>, Karen H Rosenlof<sup>1</sup>

1. NOAA Earth System Research Laboratory (ESRL), 2. Cooperative Institute for Research in Environmental Sciences (CIRES), University of Colorado at Boulder, 3. Bodeker Scientific

The total column ozone amount varies with latitude, in part due to the difference in tropopause height between the tropics and midlatitudes. This dependency of column ozone on latitude has been exploited by several studies to identify tropical edge latitudes and to compute their trends. The tropical widening trend over the past several decades from this method is greater than  $3^\circ$  latitude decade<sup>-1</sup>, a rate which is significantly larger than most other tropical widening estimates.

We assess the robustness of the previously used methodology by comparing it to a new objective gradient-based method of total column ozone. The total column ozone methodologies are then compared to a diagnostic based on vertically resolved satellite ozone data from the Stratospheric Water and Ozone Satellite Homogenized (SWOOSH) data set. Our results indicate a general lack of robustness of the previous estimates, and are more in line with other tropical widening estimates indicating poleward expansion rates of  $< 1^\circ$  latitude decade<sup>-1</sup>.

Keywords: Stratosphere, Tropical width, Tropical widening, Ozone, Satellite measurements



## Variation in the mixing fraction of tropospheric and stratospheric air masses sharing the tropical lower stratosphere

\*稲飯 洋一<sup>1</sup>、菅原 敏<sup>2</sup>、青木 周司<sup>1</sup>、森本 真司<sup>1</sup>、中澤 高清<sup>1</sup>

\*Yoichi Inai<sup>1</sup>, Satoshi Sugawara<sup>2</sup>, Shuji Aoki<sup>1</sup>, Shinji Morimoto<sup>1</sup>, Takakiyo Nakazawa<sup>1</sup>

1. 東北大学、2. 宮城教育大学

1. Tohoku University, 2. Miyagi University of Education

Stratospheric abundance of tropospheric species is largely controlled by air mass transport into the stratosphere through the tropical tropopause layer (TTL) associated with the Brewer-Dobson circulation (BDC). In addition to this transport process, quasi-horizontally mixing process between the tropical and extra-tropical lower stratospheres is also affected the abundance of such species flowing into the mid and upper stratosphere. We focus on the mixing fraction of tropospheric and stratospheric air mass sharing the tropical lower stratosphere (TLS) and its temporal variation. To estimate the origins, i.e., tropospheric or stratospheric origins, for the TLS air masses, the backward trajectories are initialized between 20°S and 20°N with 1.5° x 5.0° latitude/longitude resolution at 400 K and 440 K potential temperature surface and are calculated every month for a maximum of 180 days over the period from January 1980 to December 2015 by using Era-Interim 3-dimensional wind field. The air mass origin is determined by history information along the backward trajectory, such as potential temperature, potential vorticity, and latitude, for each air parcel. By means of statistical analyses of such air mass origins in the TLS, it is shown that (1) the mixing fraction of tropospheric and stratospheric origins is almost consistent with that estimated by Sargent et al. (2014) based on aircraft campaigns in the comparison at the same temporal-spatial region, (2) the fractions of tropospheric/stratospheric origins have seasonal variations with the maxima in boreal spring/boreal summer-autumn, and (3) their annual averages have decreasing/increasing trends from 1980 to 1999 and have increasing/decreasing trends from 2000 to 2015, respectively. We examine how such long-term variation in the mixing fraction of the TLS air masses affects stratospheric abundance of tropospheric species and the stratospheric "age of air" (AOA) (Hall and Plumb, 1994). The results qualitatively agree with long-term variation of the AOA estimated from CO<sub>2</sub> mixing ratios that have been observed by the cryogenic whole air samplings in mid-latitude mid-stratosphere.

キーワード：成層圏-対流圏物質交換、流跡線解析、成層圏大気の年齢、大気の起源、熱帯下部成層圏

Keywords: stratosphere-troposphere exchange, trajectory analysis, age of air, air mass origin, tropical lower stratosphere

## Stratospheric Residence Time Inferred from Trajectory Model Driven by Modern Reanalyses

\*Tao Wang<sup>1</sup>

1. JPL/NASA/Caltech

Stratospheric mean residence time ( $\tau$ ) is a useful quantification of the Troposphere-Stratosphere exchange. We use Lagrangian trajectories driven by modern reanalyses (MERRA, MERRA-2, CFSR, ERA-Interim, and JRA-55) to investigate the  $\tau$  and its variability in three decades. The results show systematic consistency among the MERRA, MERRA-2, and CFSR, but differ in ERAi and JRA-55. Starting from the 370-K isentrope, it takes  $\sim 3$  months for tracers to transport through the Tropical Tropopause Layer (TTL, upper boundary 425-K) when driven by MERRA, MERRA-2, and CFSR, while it only takes 2.5 and 2 months when driven by JRA-55 and ERAi, respectively. In middle to upper stratosphere (450–1500K) the accumulated differences could be up to one year. The discrepancies are mainly caused by uncertainties in total heating rates that are subject to changes by temperature, ozone, and clouds (especially cirrus) assimilated differently in reanalysis system. The residence time varies spatially and is shorter over frequent convection region and over the Asian summer monsoon where persistently strong upwelling ascends parcels faster. Despite the discrepancies, the interannual variability of  $\tau$  shows common features that are linked to the stratospheric quasi-biennial oscillation (QBO) and to the El Nino–Southern Oscillation (ENSO) events. While excluding the impact from QBO and ENSO, we found a negative trend of  $-1$ – $4\%$ /decade of residence time throughout the TTL, indicating a faster transport from strengthened upwelling in the stratosphere.

Keywords: stratospheric residence time, troposphere-stratosphere exchange, trajectory model, reanalysis

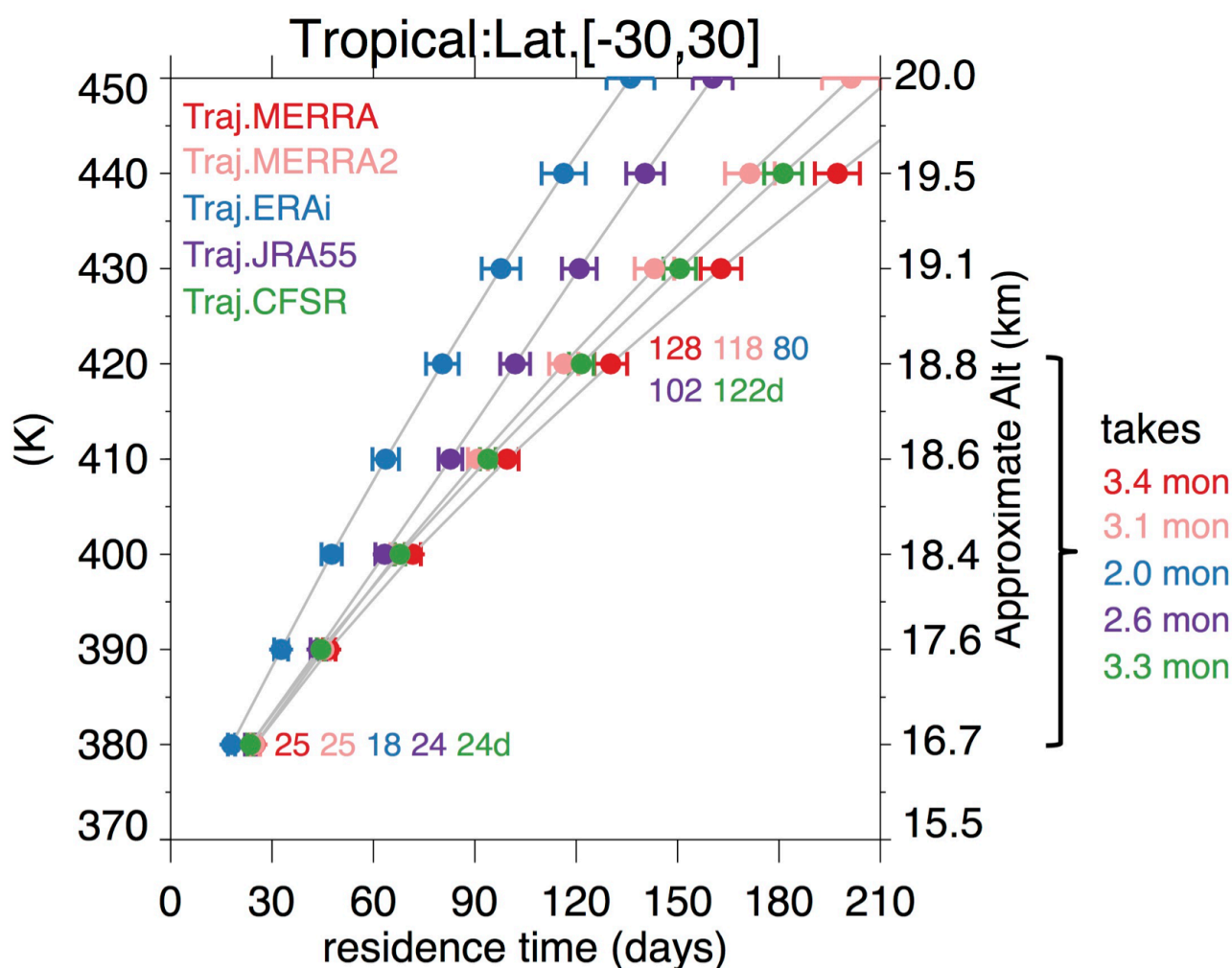


Figure 1. The residence time (days) within the lower stratosphere inferred from diabatic trajectories driven by circulations from MERRA, MERRA2, ERAi, JRA55, and CFSR. Trajectories are initiated at 370 K within 30° N-S and being advected upward by total diabatic heating rates  $Q_{\text{tot}}$  (vertical velocity  $d\theta/dt = Q_{\text{tot}} \cdot (P/P_0)^{-R/C_p}$ ).

## A warming tropical central Pacific dries the lower stratosphere

\*Qiang Fu<sup>1</sup>

1. University of Washington Seattle

The amount of water vapor in the tropical lower stratosphere (TLS), which has an important influence on the radiative energy budget of the climate system, is modulated by the temperature variability of the tropical tropopause layer (TTL). The TTL temperature variability is caused by a complex combination of the stratospheric quasi-biennial oscillation (QBO), tropospheric convective processes in the tropics, and the Brewer–Dobson circulation (BDC) driven by mid-latitude and subtropical atmospheric waves. In 2000, the TLS water vapor amount exhibited a stepwise transition to a dry phase, apparently caused by a change in the BDC. In this study, we present observational and modeling evidence that the epochal change of water vapor between the periods of 1992-2000 and 2001-2005 was also partly caused by a concurrent sea surface temperature (SST) warming in the tropical central Pacific. This SST warming cools the TTL above by enhancing the equatorial wave-induced upward motion near the tropopause, which consequently reduces the amount of water vapor entering the stratosphere. The QBO affects the TLS water vapor primarily on inter-annual timescales, whereas a classical El Niño southern oscillation (ENSO) event has little effect on tropical mean TLS water vapor because its responses are longitudinally out of phase. This study suggests that the tropical central Pacific SST is another driver of TLS water vapor variability on inter decadal timescales.

Keywords: tropical lower stratosphere, water vapor, central Pacific , Convection



# Ice Nucleation in the Tropical Tropopause Layer: Implications for cirrus occurrence, cirrus microphysical properties, and dehydration of air entering the stratosphere

\*Eric J Jensen<sup>1</sup>, Bernd Kaercher<sup>2</sup>, Rei Ueyama<sup>3</sup>, Leonhard Pfister<sup>1</sup>

1. NASA Ames Research Center, 2. Deutsches Zentrum für Luft- und Raumfahrt, 3. Bay Area Environmental Research Institute

Recent laboratory experiments have advanced our understanding of the physical properties and ice nucleating abilities of aerosol particles at low temperatures. In particular, aerosols containing organics will transition to a glassy state at low temperatures, and these glassy aerosols are moderately effective as ice nuclei. These results have implications for ice nucleation in the cold Tropical Tropopause Layer (TTL; 13-19 km). We have developed a detailed cloud microphysical model that includes heterogeneous nucleation on a variety of aerosol types and homogeneous freezing of aqueous aerosols. This model has been incorporated into one-dimensional simulations of cirrus and water vapor driven by meteorological analysis temperature and wind fields. The model includes scavenging of ice nuclei by sedimenting ice crystals. The model is evaluated by comparing the simulated cloud properties and water vapor concentrations with aircraft and satellite measurements. In this presentation, I will discuss the relative importance of homogeneous and heterogeneous ice nucleation, the impact of ice nuclei scavenging as air slowly ascends through the TTL, and the implications for the final dehydration of air parcels crossing the tropical cold-point tropopause and entering the tropical stratosphere.

Keywords: Ice nucleation, Heterogeneous nucleation, Dehydration

## Is convection important for controlling stratospheric humidity?

\*Rei Ueyama<sup>1</sup>, Mark Schoeberl<sup>2</sup>, Eric Jensen<sup>1</sup>, Leonhard Pfister<sup>1</sup>, Melody Avery<sup>3</sup>

1. NASA Ames Research Center, 2. Science and Technology Corporation, 3. NASA Langley Research Center

We investigate the role of convection on stratospheric water vapor and upper tropospheric cloud fraction using two sets of complementary transport and microphysical models driven by MERRA-2 and ERA-Interim meteorological analyses: (1) computationally efficient ensembles of forward trajectories with simplified cloud microphysics, and (2) one-dimensional simulations with detailed microphysics along back trajectories. Convective influence along the trajectories is diagnosed based on TRMM/GPM rainfall products and geostationary infrared satellite cloud-top measurements, with convective cloud-top height adjusted to match the CloudSat, CALIPSO, and CATS measurements. We evaluate and constrain the model results by comparison with satellite observations and high-altitude aircraft campaigns (e.g., ATTREX, POSIDON).

Convection moistens the lower stratosphere by approximately 0.6 ppmv (about 15% increase) and increases the cloud fraction in the upper troposphere by roughly 15%. Convection moistens the upper troposphere and lower stratospheric region mostly by saturating the convectively-influenced parcels. Including lofted ice in the microphysics has a negligible impact on lower stratospheric humidity. The highest convection has a disproportionately large impact on stratospheric water vapor enhancement. Implications of these model results on the role of convection on present and future climate will be discussed.

Keywords: tropical tropopause layer, water vapor, cirrus clouds, stratosphere, convection, climate

## Tropopause cold layer and its influence on stratospheric moisture

\*Joowan Kim<sup>1</sup>, William J. Randel<sup>2</sup>, Thomas Birner<sup>3</sup>

1. Kongju National University, 2. National Center for Atmospheric Research, 3. Colorado State University

Characteristics of the tropopause-level cold layer associated with tropical deep convection are examined using CloudSat and Constellation Observing System for Meteorology, Ionosphere and Climate (COSMIC) GPS radio occultation measurements. Deep convection is sampled based on the cloud top height (>17 km) from CloudSat 2B-CLDCLASS, and then temperature profiles from COSMIC are composited around the deep convection. Response of moisture to the cold layer is also examined in the upper troposphere and lower stratosphere using microwave limb sounder (MLS) measurements.

The composite temperature shows an anomalously warm troposphere (up to 14 km) and a significantly cold layer near the tropopause (at 16-19 km) when deep convection occurs over the western Pacific. The cold layer has a significantly large horizontal scale (~ 6,000 km in longitude) compared to that of underlying mesoscale convective clusters (occur generally on hundred-kilometer scale), and it lasts more than two weeks with a minimum temperature anomaly of ~ -2 K, particularly related to the Madden-Julian Oscillation. The water vapor anomalies show coherent structures with the temperature anomalies emphasizing the importance of the freeze-drying mechanism in the western Pacific region. The moisture is also affected by anomalous circulation patterns in the cold layer, and dry air further spreads in the TTL following the circulation patterns. These results suggest that convectively-driven tropopause cold layer and associated transient circulation play an important role in the large-scale dehydration process in the lower stratosphere.

Keywords: Tropopause cold layer, Stratospheric water vapor, Convection

## Convective Gravity Waves during the Madden-Julian-Oscillation –results of numerical modeling

\*Silvio Kalisch<sup>1,2</sup>, Hye-Yeong Chun<sup>1,2</sup>, Min-Jee Kang<sup>1</sup>

1. Yonsei University, 2. Korean Meteorological Administration Research and Development Program (grant no. 2015-6160)

Weather systems in the tropical Indian Ocean region are prominently influenced by the Madden-Julian-Oscillation (MJO) (Madden and Julian, 1972). Once an MJO active cycle is established, it can drive surface weather for several months, forcing heavy rainfall and droughts on the Indian Subcontinent. Although understanding of the MJO has improved over the last decade, MJO still considerably degrades forecasting skill, particularly in the Asian Monsoon region (Kim et al. 2014). This is especially true for seasonal prediction. The interaction of gravity waves (GW) from convection during MJO active phases is one of the various sources of uncertainties in MJO modeling. We developed a coupled model of convective gravity wave (CGW) forcing and propagation to evaluate the entire life-cycle of GWs from their convective excitation to their dissipation in the upper stratosphere / lower mesosphere region. CGW forcing at source level was calculated using the Song & Chun (2005) model. GW trajectories were calculated using GROGRAT (Marks & Eckermann 1995). Simulations were performed for all respective MJO phases for MJO cycles during a 30 years period using CFSR3 data for the full spectrum of CGWs. Our results show a strong correlation between momentum flux at cloud top height and 850 hPa zonal wind anomalies. Maximum momentum flux is prominently found in the inner tropics at altitudes between 20 km and 45 km. Horizontal and vertical wavelength spectra show maximum momentum flux for rather short wavelengths (~15-20 km) –a challenge for limb- and nadir-sounding satellite instruments. Maximums in GW drag are consistently found at altitudes higher than 45 km. We therefore conclude that convective GWs during MJO are an important contribution to the middle atmosphere momentum and energy balance and have significant effect on large-scale middle atmosphere circulations like the Brewer-Dobson circulation.

Keywords: Madden-Julian-Oscillation, Gravity waves, ray-tracing

## Is There a Stratospheric Pacemaker Controlling the Daily Cycle of Tropical Rainfall?

\*坂崎 貴俊<sup>1,2,3</sup>、Hamilton Kevin<sup>1</sup>、Zhang Chunxi<sup>1</sup>、Wang Yuqing<sup>1</sup>

\*Takatoshi Sakazaki<sup>1,2,3</sup>, Kevin Hamilton<sup>1</sup>, Chunxi Zhang<sup>1</sup>, Yuqing Wang<sup>1</sup>

1. ハワイ大学 国際太平洋研究センター、2. 日本学術振興会海外特別研究員、3. 京都大学生存圏研究所

1. International Pacific Research Center, University of Hawai'i, 2. JSPS Overseas Research Fellow, 3. RISH, Kyoto University

Rainfall in the tropics exhibits a large, 12-hour sun-synchronous variation with coherent phase around the globe. A long-standing, but unproved, hypothesis for this phenomenon is excitation by the prominent 12-hour atmospheric tide, which itself is significantly forced remotely by solar heating of the stratospheric ozone layer. We investigated the relative roles of large-scale tidal forcing and more local effects in accounting for the 12-hour variation of tropical rainfall. A model of the atmosphere run with the diurnal cycle of solar heating artificially suppressed below the stratosphere still simulated a strong coherent 12-hour rainfall variation (~50% of control run), demonstrating that stratospherically-forced atmospheric tide propagates downward to the troposphere and contributes to the organization of large-scale convection. The results have implications for theories of excitation of tropical atmospheric waves by moist convection, for the evaluation of climate models, and for explaining the recently-discovered lunar tidal rainfall cycle.

Sakazaki, T., K. Hamilton, C. Zhang, and Y. Wang (2017), Is There a Stratospheric Pacemaker Controlling the Daily Cycle of Tropical Rainfall?, *Geophys. Res. Lett.*, 44, doi:10.1002/2017GL072549.

# Understanding Anomalous Eddy Vorticity Forcing in North Atlantic Oscillation Events

\*Jie Song<sup>1</sup>

1. LASG, Institute of Atmospheric Physics (IAP), Chinese Academy of Sciences

This study proposes an anomalous eddy vorticity forcing (EVF) decomposing procedure to investigate physical mechanisms responsible for the formation of the anomalous EVF associated with North Atlantic Oscillation (NAO) events. Utilizing the Geophysical Fluid Dynamics Laboratory (GFDL) dynamical core atmospheric model, a series of NAO initial-value short-term experiments are conducted. Applying the EVF decomposing procedure to the results of these experiments, the anomalous nonlinear EVF associated with the NAO events in the model can be decomposed into several fundamental linear eddy-eddy interaction terms and an unimportant nonlinear eddy-eddy interaction term. Compared with the NAO-free situation, synoptic-scale eddies have faster (slower) eastward phase speeds during the positive (negative) NAO events. Through a synoptic-scale eddy-eddy interaction mechanism, the behaviors of anomalous EVF components in the positive (negative) NAO events are well explained by synoptic-scale eddies with faster (slower) eastward phase speeds. Therefore, synoptic-scale eddies with faster (slower) eastward phase speeds are responsible for the development of the anomalous EVF associated with positive (negative) NAO events. Note that at the initial-stage of the NAO initial-value experiments, the faster (slower) phase speeds of the synoptic-scale eddies are specified by modifying the initial value fields, and then are amplified/maintained by the strengthening (weakening) zonal wind at the middle and high latitudes associated with the approaching positive (negative) phase NAO. Therefore, this study indicates that the properties of the synoptic-scale eddies at the initial-stage determine the upcoming NAO anomalies.

Keywords: The North Atlantic Oscillation, transient eddy forcing, dynamics

## A comparison of the momentum budget in reanalysis datasets during sudden stratospheric warming events

\*Patrick Martineau<sup>1</sup>, Seok-Woo Son<sup>2</sup>, Masakazu Taguchi<sup>3</sup>, Amy Butler<sup>4</sup>

1. UCLA, 2. Seoul National University, 3. Aichi University of Education, 4. NOAA/CIRES

The agreement between reanalysis datasets is evaluated during sudden stratospheric warming (SSW) events using the zonal-mean momentum budget. Zonal-mean variables reveal a good agreement among datasets for the fast warming and weakening of the polar vortex in the lower stratosphere. Eddy fluxes and forcings for zonal-mean zonal wind acceleration are also relatively similar in the lower atmosphere. This agreement is, however, severely degraded in the mid-to-upper-stratosphere. Discrepancies among reanalyses are particularly large during the onset of SSW events, a period characterized by unusually strong fluxes of planetary-scale waves from the troposphere to the stratosphere, and are substantially smaller after the onset. The discrepancies are also typically larger for the most intense SSW events. While the largest uncertainty in the momentum budget originates from the Coriolis torque, momentum flux convergence also presents a non-negligible spread among the reanalyses. The uncertainty of all terms of the zonal-mean momentum equation among reanalyses is reduced in the latest reanalysis products.

## Does stratospheric sudden warming occur more frequently during ENSO winters than during normal winters?

\*Kanghyun Song<sup>1</sup>, Seok Woo Son<sup>1</sup>

1. Seoul National University

Stratospheric sudden warming (SSW) events exhibit pronounced interannual variability. Based on WMO definition of SSW, it has been suggested that SSW events occur more preferably during El Niño-Southern Oscillation (ENSO) winters (both El Niño and La Niña winters) than during normal winters. This nonlinear relationship is re-examined here by considering six different definitions of SSW. For all definitions, SSW events are detected more frequently during El Niño winters than during normal winters, in consistent with an enhanced planetary-scale wave activity. However, a systematic relationship is not found during La Niña winters. While two SSW definitions, including WMO definition, show an increased SSW frequency during La Niña winters, other definitions show no change or even a reduced SSW frequency. This result is insensitive to the choice of reanalysis datasets and ENSO index, indicating that the reported ENSO-SSW relationship is not robust but dependent on the details of SSW definition. Implication of this finding to SSW-related downward coupling and surface climate variability is also discussed.

Keywords: Stratospheric sudden warming, El Niño-Southern Oscillation, Interannual variation of polar vortex, Stratospheric-tropospheric coupling



## New definition of stratospheric warming events in the Northern Hemisphere based on geometry of the polar vortex

\*平野 創一朗<sup>1</sup>、佐藤 薫<sup>1</sup>

\*Soichiro Hirano<sup>1</sup>, Kaoru Sato<sup>1</sup>

1. 東京大学 大学院理学系研究科 地球惑星科学専攻

1. Department of Earth and Planetary Science, Graduate School of Science, The University of Tokyo

It is known that a few kinds of warming events occur in the Northern Hemisphere (NH) winter polar stratosphere. (Labitzke 1982). In early winter, the polar vortex often displaces substantially from the Pole mainly in the middle and lower stratosphere, which is called Canadian warming (CW; Manney et al. 2001) in the NH. In the middle of winter, polar stratospheric temperature sometimes increases rapidly, accompanied by collapse of the polar vortex. Such an event is called stratospheric sudden warming (SSW; Scherhag 1952). In the end of winter, a relatively sudden warming called stratospheric final warming (SFW; Black et al. 2006) occurs every year, followed by the summer state of the polar stratosphere. Traditionally, zonal mean zonal wind is used to define SSWs (Butler et al. 2015) and SFWs (Black et al. 2006). Although their definition is simple and easy to deal with, CWs, SSWs, and SFWs may be confused. Moreover, the polar vortex has notable horizontal structure during SSWs and SFWs, which cannot be captured by the definition based on zonal mean quantities. Mitchell et al. (2013) and Seviour et al. (2013) proposed new definition of SSWs based on moment diagnostics, where the polar vortex is approximated as an equivalent ellipse (Hu 1962; Waugh 1997). The moment diagnostics allow them to define displacement and splitting SSWs separately by using centroid latitude and aspect ratio of the polar vortex. However, SSWs in their definition may include CWs and SFWs. Note also that there is almost no clear definition for CWs.

In our study, CWs, SSWs, and SFWs are defined by applying moment diagnostics to geopotential height field at 3, 10, and 30 hPa in the polar region. The three kinds of warming events are clearly distinguished in our definition.

First, displacement, splitting, and disappearance events are defined at each altitude. To detect displacement events, centroid latitude is used as in the previous studies. Displacement events are categorized into major and minor ones according to how far the polar vortex displaces from the Pole. Splitting events are defined using kurtosis, which is measure of bipolarity (Matthewman et al. 2009). If geopotential height at all the lattice points in the polar region is larger than background value in the moment diagnostics, the events are defined as disappearance events.

Next, CWs, SSWs, and SFWs are defined based on the events identified above. Displacement-SFWs (D-SFWs) and splitting-SFWs (S-SFWs) are first defined if displacement and splitting events are followed by disappearance events, respectively. SSWs and CWs are then distinguished according to at which altitude the polar vortex is more perturbed. If the polar vortex displaces further from the Pole in the lower stratosphere than in the upper stratosphere, the events are defined as D-CWs. Otherwise, the events are defined as D-SSWs. If splitting events occur only in the lower stratosphere, the events are defined as S-CWs. Other splitting events are defined as S-SSWs.

We performed composite analysis in each category of each warming phenomenon. It is shown that the definition based on geometry of the polar vortex is consistent with a dynamical aspect of each warming phenomenon. We will investigate longitudinal structures of the polar vortex and material circulation during CWs, SSWs, and SFWs, using formulae of three-dimensional residual mean flows applicable to both Rossby waves and gravity waves derived by Kinoshita and Sato (2013).

キーワード : Canadian warming、成層圏突然昇温、成層圏最終昇温

Keywords: Canadian warming, stratospheric sudden warming, stratospheric final warming

# Predictability of Arctic Polar-night Jet Oscillation Events and Its Impact on the Forecast Skill of Tropospheric Circulation

\*野口 峻佑<sup>1</sup>、向川 均<sup>2</sup>

\*Shunsuke Noguchi<sup>1</sup>, Hitoshi Mukougawa<sup>2</sup>

1. 気象研究所、2. 京都大学

1. Meteorological Research Institute, 2. Kyoto University

The predictability of the extratropical stratosphere and its impact on the forecast skill of tropospheric circulation in the Northern Hemisphere are examined in the framework of Polar-night Jet Oscillation (PJO). The PJO is the dominant low-frequency mode in the winter stratosphere characterized by the poleward and downward propagation of the zonal-mean zonal wind anomalies.

By using extended-range ensemble forecast datasets provided by the Japan Meteorological Agency, we have projected statistical properties of forecast results to a phase space spanned by two leading empirical orthogonal functions representing the PJO behavior. As a result, following characteristics of predictability variations during both anomalously weak and strong events of the stratospheric polar vortex (part of such events corresponds to sudden warmings and vortex intensifications) are obtained: (1) During prominent PJO conditions, regardless of weak or strong vortex events, the forecast skill of long-lasting anomalies in the lower stratosphere is significantly enhanced for forecasts starting after the onset of anomalous events. (2) The forecast skill not only in the lower stratosphere but also in the troposphere is improved after the setup of anomalous events. However, the reduction of tropospheric forecast error sometimes becomes obscure due to tropospheric internal variabilities, especially after strong vortex events. (3) In contrast to the same positive impact on the forecast skill in the lower atmosphere, the forecast uncertainty of the stratospheric condition shows different feature depending on the strength of the stratospheric polar vortex: During weak vortex events, the temporal evolution of the ensemble spread changes drastically from the exponential growth (saturates at high level) to the linear one (remains small) associated with the breakdown of the polar vortex. On the other hand, during strong vortex events, forecasts show large uncertainty throughout the event, because the westerly wind condition in several members of ensemble forecast permits intermittent upward propagation of planetary waves although the time-averaged flux from the troposphere is anomalously low.

Thus, this study provides comprehensive knowledge for the impact and uncertainty of stratosphere-troposphere coupling in a state-of-the-art ensemble prediction system. Our results and methodologies would also be particularly useful for real-time monitoring of sub-seasonal to seasonal forecasts.

キーワード：成層圏-対流圏結合、予測可能性、季節予報

Keywords: stratosphere-troposphere coupling, predictability, seasonal forecast

## A three-week total ozone reduction over Rio Gallegos in Argentina in November 2009 and its relation to blocking in the troposphere

\*秋吉 英治<sup>1</sup>、門脇 正尚<sup>2</sup>、中村 東奈<sup>3,1</sup>、杉田 考史<sup>1</sup>、原田 やよい<sup>4</sup>、廣岡 俊彦<sup>5</sup>、水野 亮<sup>6</sup>

\*Hideharu Akiyoshi<sup>1</sup>, Masanao Kadowaki<sup>2</sup>, Haruna Nakamura<sup>3,1</sup>, Takafumi Sugita<sup>1</sup>, Yayoi Harada<sup>4</sup>, Toshihiko Hirooka<sup>5</sup>, Akira Mizuno<sup>6</sup>

1. 国立環境研究所、2. 日本原子力研究開発機構、3. 富士通FIP、4. 気象研究所、5. 九州大学、6. 名古屋大学宇宙地球環境研究所

1. National Institute for Environmental Studies, 2. Japan Atomic Energy Agency, 3. Fujitsu FIP Corporation, 4. Meteorological Research Institute, 5. Kyushu University, 6. Institute for Space-Earth Environmental Research, Nagoya University

A three-week total ozone reduction over the southern tip of South America in November 2009 was reported by de Laat et al. (2010). Such long lasting low total ozone is unusual for this region and season. Ozone vertical profile measurements at Rio Gallegos, Argentina (51°S, 69°W), by ozone LIDAR suggest that isentropic surfaces of 675K and 475K over Rio Gallegos were inside the Antarctic polar vortex around November 13-14 and 22-23, respectively (Wolfram et al., 2012); thus, the low total ozone lasted for three weeks. Analyses of the total ozone observed by OMI, and ERA-Interim and JRA-55 reanalysis data indicate that the low total ozone event was caused by a polar vortex migration toward the South American continent at the time of the vortex breakup, and that the migration is associated with an enhanced wave flux from the troposphere to the stratosphere at around 120-150°W and 50-60°S. In November, a large positive deviation of a 500 hPa geopotential height from the zonal-mean was evident. This large positive deviation was considered to be a blocking by diagnosing the geopotential height field in accordance with the method of Mendes et al. (2012). These results suggest a relation between the long-term low total ozone event over Rio Gallegos and a blocking phenomenon in the troposphere of the Southern Hemisphere through wave propagation from the blocking region.

キーワード：オゾン、極渦、南米、ブロッキング、波動フラックス

Keywords: ozone, polar vortex, South America, blocking, wave flux

## フーリエ変換型赤外分光計(FTIR)を用いた地上観測によるつくばにおけるHCl全量の再減少

### Redecrease of HCl total column density observed with Fourier transform infrared spectroscopy at Tsukuba

\*代 友輝<sup>1</sup>、村田 功<sup>1</sup>、中島 英彰<sup>2</sup>、森野 勇<sup>2</sup>、富川 喜弘<sup>3</sup>

\*Yuki Dai<sup>1</sup>, Isao Murata<sup>1</sup>, Hideaki Nakajima<sup>2</sup>, Isamu Morino<sup>2</sup>, Yoshihiro Tomikawa<sup>3</sup>

1. 東北大学、2. 国立環境研究所、3. 国立極地研究所

1. Tohoku University, 2. National Institute for Environmental Studies, 3. National Institute of Polar Research

東北大学と国立環境研究所では、国立環境研究所所有の高分解能フーリエ変換型赤外分光計(FTIR)を用いて、つくばにおいて1998年12月より大気微量成分の地上観測を行っている。今回報告する塩化水素(HCl)は主に成層圏に存在する。地上から排出されたフロン類などの塩素化合物は、大気循環により成層圏に運ばれたあと光解離等の化学変化を経て、普段はHClやClONOといったリザーバー分子として貯蓄される。南極や北極の春先に低温となり極域成層圏雲が発生することでリザーバー分子は活性なClに変換され、大規模なオゾン破壊を起こすようになる。そのためHClの大気中の存在量はオゾン層破壊における潜在的な指標のひとつである。

フロン規制以前は、成層圏大気中の塩素総量は増加傾向でありHCl全量も同様に増加していたが、フロン規制により1990年代後半から世界的に減少し始めた。しかし、Mahieu et al. [2014]ではつくばを含むFTIR観測の国際的グループNetwork for the Detection of Atmospheric Composition Change/Infrared Working Groupの8地点における1997年から2011年の期間の地上観測および人工衛星観測によるGOZCARDSデータセットにより、HCl濃度が北半球下部成層圏で2007年以降再び増加していることを発見した。さらに大気モデルと観測結果との比較により、増加の原因が北半球の大気循環の数年程度の短期的な減速であることを明らかにした。

そこで本研究は、このHClの増加が2007年以降の「数年程度の短期的な」現象であったことを明らかにするべく、2001年から2016年の期間でつくば上空におけるHCl全量を解析し経年変化を調べた。解析にはロジャーズ法を用いたスペクトルフィッティングプログラムSFIT4を使用した。

その結果、HCl全量は2001年から2006年で減少傾向、2007年から2011年で増加傾向、2012年から2016年で再び減少傾向を示し、予測通り2007年以降の増加は短期的なものであったことがわかった。またヨーロッパ中期予報センターの再解析データ(ERA Interim)を使用し、つくばのある北緯36度における成層圏下部の残差鉛直速度の帯状平均の年々変化をみたところ、2007年から2012年にかけて下降流が強まることと、2012年以降に上昇流が強まることが確認された。HClのような主に成層圏に分布する成分は成層圏大循環により分子が輸送されるため、下降流で全量が増加し、逆に上昇流で全量が減少する。このことから、残差鉛直速度の傾向は観測結果と整合的である。しかし、HClの輸送を担う成層圏大循環の年々変化の全体像をとらえるためには、つくば上空のみではなく全球の残差鉛直速度の年々変化を調べる必要がある。

キーワード：フーリエ変換型分光計、オゾン破壊、塩化水素

Keywords: FTIR, Ozone depletion, Hydrogen Chloride

# Latitudinal distributions of gravitational separation and mean age of the stratospheric air observed using a balloon-borne cryogenic air sampler

\*石戸谷 重之<sup>1</sup>、菅原 敏<sup>2</sup>、青木 周司<sup>3</sup>、森本 真司<sup>3</sup>、中澤 高清<sup>3</sup>、豊田 栄<sup>4</sup>、本田 秀之<sup>5</sup>

\*Shigeyuki Ishidoya<sup>1</sup>, Satoshi Sugawara<sup>2</sup>, Shuji Aoki<sup>3</sup>, Shinji Morimoto<sup>3</sup>, Takakiyo Nakazawa<sup>3</sup>, Sakae Toyoda<sup>4</sup>, Hideyuki Honda<sup>5</sup>

1. 産業技術総合研究所、2. 宮城教育大学、3. 東北大学、4. 東京工業大学、5. 宇宙航空研究開発機構

1. National Institute of Advanced Industrial Science and Technology (AIST), 2. Miyagi University of Education, 3. Tohoku University, 4. Tokyo Institute of Technology, 5. Japan Aerospace Exploration Agency

We have collected the stratospheric air samples over Japan, the Arctic, Antarctica and equatorial regions at height levels from 10 to 35 km since 1985 by using two kinds of cryogenic air samplers on board a scientific balloon (Honda et al., 1996; Morimoto et al. 2009). The air samples were analyzed for atmospheric greenhouse gases and related air components, and we reported many findings such as spatiotemporal variations in the stratospheric CO<sub>2</sub> concentration and gravitational separation of major atmospheric components (e.g. Aoki et al., 2003; Ishidoya et al., 2013). Recently, many studies have focused on “mean age” of stratospheric air derived from clock tracers such as CO<sub>2</sub> and SF<sub>6</sub> to evaluate changes in the Brewer-Dobson circulation (BDC) responding to climate change (e.g. Engel et al., 2009; Ray et al., 2014). However, as Ray et al. (2014) reported, it is difficult to separate the competing effects on the mean age between mean circulation and mixing only from CO<sub>2</sub> and SF<sub>6</sub> ages since the mean age becomes younger and older by an enhancement of mean circulation and mixing, respectively, as the consequences of accelerating of BDC. In this regard, gravitational separation of stratospheric air, observed firstly by our observations, is expected to be an additional tool to constrain detail changes in BDC. Both the age and gravitational separation are unaffected by any chemical processes ideally, however the cause of gravitational separation, mass-dependent molecular diffusion superimposed on mass-independent atmospheric transport, is fundamentally different from the cause of age. Therefore, competing effects on gravitational separation between mean circulation and mixing are also expected to be different from those on age. In this study, we present latitudinal distributions of gravitational separation and CO<sub>2</sub> age and discuss the advantages of the simultaneous analyses of age and gravitational separation to the stratospheric circulation study.

## References

Aoki et al. (2003) *Tellus*, 55B, 178-186.

Engel et al. (2009) *Nature Geoscience*, 2, 28-31.

Honda et al. (1996) *J. Geomagn. Geoelectr.*, 48, 1145-1155.

Ishidoya et al. (2013) *Atmos. Chem. Phys.*, 13, 8787-8796.

Morimoto et al. (2009) *J. Atmos. Oceanic Technol.*, 26, 2182-2191.

Ray et al. (2014) *J. Geophys. Res.*, 115, D21304.

キーワード：成層圏大気重力分離、成層圏大気年齢、大気球搭載型クライオジェニックサンプラー、ブリューワー・ドブソン循環

Keywords: gravitational separation of the stratospheric air, age of the stratospheric air, balloon-borne cryogenic air sampler, Brewer-Dobson circulation



## 航空機フラスコサンプリングに基づく日本-欧州間の上部対流圏/下部成層圏における温室効果ガスの季節変動とトレンド

### Seasonal variations and trends of greenhouse gases in the upper troposphere/lowermost stratosphere by flask-based aircraft measurements between Europe and Japan

\*澤 庸介<sup>1</sup>、町田 敏暢<sup>2</sup>、松枝 秀和<sup>1</sup>、丹羽 洋介<sup>1</sup>、坪井 一寛<sup>1</sup>、勝又 啓一<sup>2</sup>、梅澤 拓<sup>2</sup>、江藤 仁樹<sup>3</sup>、藤田 遼<sup>4</sup>、後藤 大輔<sup>5</sup>、森本 真司<sup>4</sup>、青木 周司<sup>4</sup>

\*Yousuke Sawa<sup>1</sup>, Toshinobu Machida<sup>2</sup>, Hidekazu Matsueda<sup>1</sup>, Yosuke Niwa<sup>1</sup>, Kazuhiro Tsuboi<sup>1</sup>, Keiichi Katsumata<sup>2</sup>, Taku Umezawa<sup>2</sup>, Hiroki Eto<sup>3</sup>, Ryo Fujita<sup>4</sup>, Daisuke Goto<sup>5</sup>, Shinji Morimoto<sup>4</sup>, Shuji Aoki<sup>4</sup>

1. 気象研究所海洋・地球化学研究部、2. 国立環境研究所、3. 日本航空株式会社、4. 東北大学、5. 国立極地研究所

1. Oceanography and Geochemistry Research Department, Meteorological Research Institute, 2. National Institute for Environmental Studies, 3. Japan Airlines, 4. Tohoku University, 5. National Institute of Polar Research

As part of the CONTRAIL project, we have conducted measurements of greenhouse gases ( $\text{CO}_2$ ,  $\text{CH}_4$ ,  $\text{N}_2\text{O}$ , and  $\text{SF}_6$ ) by monthly air sampling in the upper troposphere/lowermost stratosphere (UT/LMS) onboard commercial airliners between Europe and Japan since April 2012. The observed mixing ratios showed sharp gradients around the dynamical tropopause defined by potential vorticity calculated from the meteorological reanalysis fields. In the UT north of 50°N,  $\text{CH}_4$  and  $\text{SF}_6$  were higher and seasonal phase of  $\text{CO}_2$  were earlier than in the lower latitudes. In the LMS up to potential temperature of 50 K above the tropopause,  $\text{CH}_4$ ,  $\text{N}_2\text{O}$ , and  $\text{SF}_6$  exhibited seasonal variations with maxima in November/December and minima in April/May. The remarkable seasonal variation in the LMS is explained by the subsidence of air from the deeper stratosphere in spring and by the efficient flushing of the LMS with tropospheric air in autumn. We observed persistent increasing trends of the all greenhouse gases over the past 5 years both in the UT and LMS. Our measurements constitute a unique data set in the UT/LMS useful for investigating temporal and spatial variations of these radiatively and chemically important greenhouse gases.

キーワード：温室効果ガス、上部対流圏／下部成層圏、航空機観測

Keywords: Greenhouse gases, Upper troposphere/Lower Stratosphere, Aircraft measurement



# The Relationship between Boreal summer Intra-seasonal Oscillation and the Stratospheric Circulation

\*原田 やよい<sup>1</sup>

\*Yayoi Harada<sup>1</sup>

1. 気象研究所

1. Meteorological Research Institute

Boreal summer intra-seasonal oscillation (BSISO) is a phenomenon that active convective region migrate northward in the Indian Ocean and the western Pacific with a period of 30 –90 days. In this study, statistical relationships between BSISO and the stratospheric circulation are examined focusing on the variabilities of the zonal wind fields both in the troposphere and stratosphere. BSISO index based on Kikuchi et al. (2012) and the Japanese 55-year Reanalysis (JRA-55, Kobayashi et al. 2015) are used for composite analysis. To represent the zonal mean fields, the mass-weighted isentropic zonal mean (MIM) Method (Iwasaki 1989) is applied to JRA-55. The MIM method is suitable for the examination of zonal momentum budget, and enables analysis of a single hemispheric cell, such as Blewer-Dobson circulation in the stratosphere and the extra-tropospheric direct circulation. In order to extract variability synchronized with BSISO or lower (higher) frequent variability than BSISO, temporal filtering based on Duchon (1979) is also carried out to the zonal mean fields obtained by the application of the MIM method.

We found some characteristic features of the zonal wind field during the significant BSISO: Hemispheric symmetry westerly anomalies are observed from mid-troposphere up to the tropical tropopause layer (TTL) just after the northward migration of active convective region in BSISO region, and move poleward in both hemispheres in spite of meridional asymmetry of the convective activity: In the extra-tropical upper stratosphere of the Northern Hemisphere, both easterly anomalies and positive potential temperature anomalies are statistically significant during the northward migration of active convective region. Moreover, our results also reveal that the amplitude of BSISO is extraordinarily large during the strong low-frequency easterly anomalies at around the 20 hPa level associated with quasi-biennial oscillation (QBO) and suggest influence of the stratospheric circulation on the activity of BSISO in the troposphere.

キーワード：北半球夏季季節内振動、質量重み付き等温位面帯状平均、成層圏循環、成層圏準2年振動

Keywords: Boreal summer intra-seasonal oscillation, Mass-weighted isentropic zonal mean, Stratospheric circulation, Quasi-biennial oscillation

## Investigating the tropical tropopause layer and the lower stratosphere using global models

\*Dmitry Belikov<sup>1</sup>, Fumio Hasebe<sup>1</sup>

1. Section of Earth System Science, Faculty of Environmental Earth Science, Hokkaido University

The tropical tropopause layer (TTL) is the transition region from the troposphere to the stratosphere, and acts as a gateway to the stratosphere. Understanding all processes that control the TTL, and incorporating them in models, is an important prerequisite for reliable predictions of changes in the TTL in a changing climate and for predicting how these changes in turn feedback, e.g., via stratospheric ozone chemistry, on the global climate system. Over the past two decades, large efforts have been undertaken to improve data coverage in the TTL with the necessary vertical, spatial, and temporal resolution required to accurately characterize the transitional character of the TTL. However, due to a lack of global observations it is still not clear how the connection between the stratosphere and troposphere occurs and how it modulates the convective activity. The purpose of this research is to establish an integrated study of internal processes in the tropical tropopause layer and the lower stratosphere and to deepen understanding on atmospheric environmental change through systematic simulations and analysis of various tracers (i.e., <sup>222</sup>Rn, SF<sub>6</sub>, CO<sub>2</sub>, CH<sub>4</sub>, and others) and meteorological parameters (temperature, wind, water vapor and others). This study focuses on the age of air and gravitational separation in the stratosphere.

Keywords: the tropical tropopause layer, the lower stratosphere, the age of air

## A method for obtaining high frequency, global, IR-based Convective Cloud Tops for studies of the TTL

\*Leonhard Pfister<sup>1</sup>, Rei Ueyama<sup>2</sup>, Eric Jensen<sup>1</sup>, Mark Schoeberl<sup>3</sup>

1. NASA Ames Research Center, 2. Bay Area Environmental Research Institute, 3. Science and Technology Corporation

Models of varying complexity that simulate water vapor and clouds in the Tropical Tropopause Layer (TTL) show that including convection directly is essential to properly simulating the water vapor and cloud distribution. In boreal winter, for example, simulations without convection yield a water vapor distribution that is too uniform with longitude, as well as minimal cloud distributions. Two things are important for convective simulations. First, it is important to get the convective cloud top potential temperature correctly, since unrealistically high values (reaching above the cold point tropopause too frequently) will cause excessive hydration of the stratosphere. Second, one must capture the time variation as well, since hydration by convection depends on the local relative humidity (temperature), which has substantial variation on synoptic time scales in the TTL.

This paper describes a method for obtaining high frequency (3-hourly) global convective cloud top distributions which can be used in trajectory models. The method uses rainfall thresholds, standard IR brightness temperatures, meteorological temperature analyses, and physically realistic and documented corrections IR brightness temperature corrections to derive cloud top altitudes and potential temperatures. The cloud top altitudes compare well with combined CLOUDSAT and CALIPSO data, both in time-averaged overall vertical and horizontal distributions and in individual cases (correlations of .65-.7). An important finding is that there is significant uncertainty (nearly .5 km) in evaluating the statistical distribution of convective cloud tops even using lidar. Deep convection whose tops are in regions of high relative humidity (such as much of the TTL), will cause clouds to form above the actual convection. It is often difficult to distinguish these clouds from the actual convective cloud due to the uncertainties of evaluating ice water content from lidar measurements.

Comparison with models show that calculated cloud top altitudes are generally higher than those calculated by global analyses (e.g., MERRA). Interannual variability in the distribution of convective cloud top altitudes is also investigated.

Keywords: Tropical Tropopause Layer, Convection, Hydration, Dehydration

## Interannual and intraseasonal variations of clouds in the upper Tropical Tropopause Layer observed by CALIOP

Yuya Kowaka<sup>1</sup>, \*Hisahiro Takashima<sup>1</sup>, Nawo Eguchi<sup>2</sup>

1. Fukuoka University, 2. RIAM, Kyushu University

Cloud variations in the tropical tropopause layer (TTL) during northern winter are investigated using the 10-year CALIPSO observations, in particular focusing on the cloud top level above the cold point tropopause (above approximately 18 km). The 10-year climatology of the TTL cloud shows higher occurrence frequency over South America, Africa, and the western-central Pacific. Interannual variation of the TTL clouds is strongly related with the TTL temperature variations associated with Quasi Biennial Oscillation (QBO) and El Nino and Southern Oscillation (ENSO). The TTL clouds associated with QBO appear/disappear simultaneously over South America, the equatorial Africa, and western-central Pacific. On the other hand, the TTL clouds associated with ENSO vary with the see-saw pattern between the western and central Pacific. We also investigated intraseasonal variations during December 2009 - February 2010. It is suggested that the temperature perturbation associated with the equatorial Kelvin wave and the sudden stratospheric warming (SSW) are important for the cloud formation. Interestingly, the TTL clouds occurred only over South America, Africa, and western-central Pacific along the Kelvin wave going east.

Keywords: tropical tropopause layer (TTL), CALIPSO, cloud

# The Impact of Convection and Gravity Waves on Stratospheric Water and Upper Troposphere Cloud Fraction

\*Mark R Schoeberl<sup>1</sup>, Andrew Dessler, Eric J Jensen, Melody Avery, Leonhard Pfister

1. Science and Technology Corporation

Using our forward-domain-fill trajectory model we have run a series of experiments to explore the impact of convection and gravity waves on TTL cloud fraction and stratospheric water vapor. We compare results using MERRA convective fields and a satellite-based estimate of convective cloud heights. Gravity wave information comes from the Loon super pressure balloons. We compare our results to MLS stratospheric water vapor and CALIOP cloud fraction. The use of the high spatial resolution satellite-based convective cloud heights produces little change in model stratospheric water, but a nearly 50% reduction in model high cloud fraction (well below the observed cloud fraction) compared to the model results when we use the MERRA convective fields. Using the observed gravity wave temperature fields, cloud fraction increases, but the fluctuations produce too much cloud unless we attenuate the gravity wave fields below the tropopause –as is observed in radiosonde data. The end results, observed convection plus observed gravity waves, are in excellent agreement with observations. Overall, these results suggest that mid-frequency gravity waves play a more significant role in the cloudiness of the TTL region than previously recognized.

Keywords: Stratosphere, Cirrus , Dehydration, Tropics

# Tropopause Layer Change on Different Time Scales

\*Tao Xian<sup>1</sup>

1. University of Science and Technology of China

Together with a comparatively small warming trend in global surface temperature, or warming hiatus, during the last 15 years, there are stagnations in the rising and thickening trends in the tropopause layer, which is sensitive to climate change. In this study, the variation of the vertical boundaries and thickness of the tropopause layer on different time scales and their contributions to the recent tropopause layer hiatus are investigated using the radiosonde observations from the Integrated Global Radiosonde Archive during 1960-2013.

The results confirm that global trends of rising tropopause layer boundary heights and thickening of the tropopause layer have stalled during recent years. The seasonal amplitude of each tropopause layer parameter become larger during the hiatus period (2002-2013) than that during the pre-hiatus period (1960-1997), except for the tropical tropopause layer top boundary. Moreover, the correlations between the tropopause height and corresponding temperature suggested by previous studies exist in all latitude bands in the period 1960-2013, with anti-correlations in the extratropical tropopause layer and positive correlation in tropical tropopause layer top boundary. In addition, the seasonal trends in the tropopause layer parameters show that significant trend difference occur during winter and spring.

Keywords: Tropopause Layer, Radiosonde

# Extreme tropical lower stratospheric water vapor and ice amounts during 2015-2016 and their relation to ENSO, QBO, and convective overshooting

Karen Hepler Rosenlof<sup>1</sup>, \*Sean M Davis<sup>1,3</sup>, Melody Avery<sup>2</sup>, Hao Ye<sup>4</sup>, Andrew Dessler<sup>4</sup>

1. NOAA Earth System Research Laboratory, 2. NASA Langley Research Center, 3. Cooperative Institute for Research in Environmental Sciences (CIRES), University of Colorado at Boulder, 4. Texas A&M University

In this presentation, we investigate the relative roles of tropical tropopause layer (TTL, ~14 –19 km) temperatures and overshooting on the tropical lower stratospheric water vapor budget using satellite observations, reanalyses, and dehydration trajectory modeling applied to the highly unusual El Niño-Southern Oscillation (ENSO) and stratospheric quasi-biennial oscillation (QBO) events of 2015-2016.

To first order, the TTL temperature field regulates the amount of water vapor entering the stratosphere by controlling the amount of dehydration in the rising air. Thus, modes of climate variability such as the stratospheric QBO, variations in tropical upwelling, ENSO have the potential to impact the stratospheric entry value of water vapor via their impact on TTL temperatures. Additionally, vigorous convection that overshoots the local tropopause might also have a direct impact on stratospheric water vapor in a manner that circumvents the TTL cold trap mechanism.

The El Niño and subsequent La Niña of 2015-2016 coincided with a remarkable perturbation to the concentration of water vapor entering the stratosphere in the tropics. At the end of 2015 during the El Niño, a decadal record amount of lower stratospheric water vapor was observed in the Western Pacific, followed by a record dry anomaly that occurred after the 2016 QBO “interruption” and during the La Niña.

Coincident with the record setting amount of water vapor at the end of 2015, the TTL Western Pacific cold pool was shifted eastward from its climatological position and aligned with the center of convection over the Central Pacific. Over this region, there was an extreme decadal record amount of convective cloud ice in the lower stratosphere observed by the CALIOP satellite lidar. A trajectory-based analysis that models hydration based solely on reanalysis temperature and wind fields can account for only about half of the observed tropical lower stratospheric moistening during this event. This suggests that unresolved dynamical processes associated with convection and/or sublimation of lofted ice particles also contributed to lower stratospheric moistening. These processes could contribute to climate change-induced stratospheric water vapor increases.

Keywords: stratospheric water vapor, tropical tropopause layer, convective overshooting, ENSO, QBO

## Assessment of upper tropospheric and stratospheric water vapour and ozone in reanalyses as part of S-RIP

\*Sean M Davis<sup>1,2</sup>, Michaela Hegglin<sup>3</sup>, Masatomo Fujiwara<sup>4</sup>, Rossana Dragani<sup>5</sup>, Yayoi Harada<sup>6</sup>, Chiaki Kobayashi<sup>7</sup>, Craig Long<sup>8</sup>, Gloria Manney<sup>9,10</sup>, Eric Nash<sup>11</sup>, Susann Tegtmeier<sup>12</sup>, Tao Wang<sup>13</sup>, Krzysztof Wargan<sup>14</sup>, Jonathon Wright<sup>15</sup>

1. NOAA Earth System Research Laboratory, 2. Cooperative Institute for Research in Environmental Sciences (CIRES), University of Colorado at Boulder, 3. University of Reading, 4. Hokkaido University, 5. European Centre for Medium-Range Weather Forecasts, 6. Japan Meteorological Agency, 7. Meteorological Research Institute, Japan Meteorological Agency, 8. NOAA Climate Prediction Center, 9. NorthWest Research Associates, 10. New Mexico Institute of Mining and Technology, 11. Science Systems and Applications, Inc., Lanham, 12. GEOMAR Helmholtz Centre for Ocean Research, 13. NASA Jet Propulsion Laboratory/California Institute of Technology, 14. NASA Global Modeling and Assimilation Office, 15. Tsinghua University

Reanalysis datasets are widely used to understand atmospheric processes and past variability, and are often used as “observations” for comparison with climate model output. Because of the central role of water vapour (WV) and ozone (O<sub>3</sub>) in climate change, it is important to understand how accurately these species are represented in the existing global reanalyses, and whether or not significant differences exist amongst them. We present results from the WV and O<sub>3</sub> intercomparisons that were performed as part of the SPARC (Stratosphere-troposphere Processes and their Role in Climate) Reanalysis Intercomparison Project (S-RIP). Comparisons are made over a range of timescales between the different reanalyses, and between reanalyses and observational datasets.

In addition to the intercomparisons, we discuss the treatment of WV and O<sub>3</sub> in reanalyses to aid future research and guide the interpretation of differences between the reanalysis fields. Because total column ozone (TCO) is assimilated in the newer reanalyses, these reanalyses generally reproduce TCO well except when data coverage is lacking, such as during polar night. We find that the vertical distribution of ozone is relatively well represented in reanalyses, particularly given that for most reanalyses there are only weak constraints on the vertical profile of ozone from observations, and that most have a simplistic representation of ozone photochemical processes.

In contrast to O<sub>3</sub>, stratospheric WV data are not currently assimilated, with humidity observations typically used only in the troposphere below a specified vertical level at or near the tropopause. Thus, the fidelity of reanalysis stratospheric WV is sensitive to how accurately the fundamental drivers of stratospheric WV such as tropical tropopause layer temperatures, methane oxidation, and the stratospheric overturning circulation are represented. Because of these issues and the known deficiencies in the representation of stratospheric transport in reanalyses, we find much poorer agreement both amongst reanalyses and between reanalyses and independent observations. For these reasons, stratospheric WV from the current generation of reanalyses should not be used in scientific studies.

Keywords: ozone, water vapor, stratosphere, reanalyses, SPARC Reanalysis Intercomparison Project



## Intercomparison of atmospheric tides in global reanalyses from the stratosphere to the lower-mesosphere

\*坂崎 貴俊<sup>1,2,3</sup>

\*Takatoshi Sakazaki<sup>1,2,3</sup>

1. ハワイ大学 国際太平洋研究センター、2. 日本学術振興会海外特別研究員、3. 京都大学生存圏研究所

1. International Pacific Research Center, University of Hawai'i, 2. JSPS Overseas Research Fellow, 3. RISH, Kyoto University

Atmospheric tides in reanalyses are worth investigating because they are important lower boundary conditions of whole atmosphere model and also because they can be used for diurnal correction of satellite measurements. This study comprehensively assesses atmospheric tides in latest reanalyses (MERRA-2, MERRA, ERA-Interim, JRA55 and NCEP-CFSR), for both migrating and nonmigrating components in the region from the stratosphere to the lower-mesosphere, during the period of 2006-2012. SABER and MLS satellite measurements are used for comparison. It is found that all reanalyses reproduce realistic tides in a qualitative way, while the quantitative difference among the data sets depends on wavenumber and frequency. Particularly, there seems a systematic bias between SABER and reanalyses for diurnal migrating tide. We also analyzed long term changes in tides and found that they are artificially affected by the change in assimilated data.

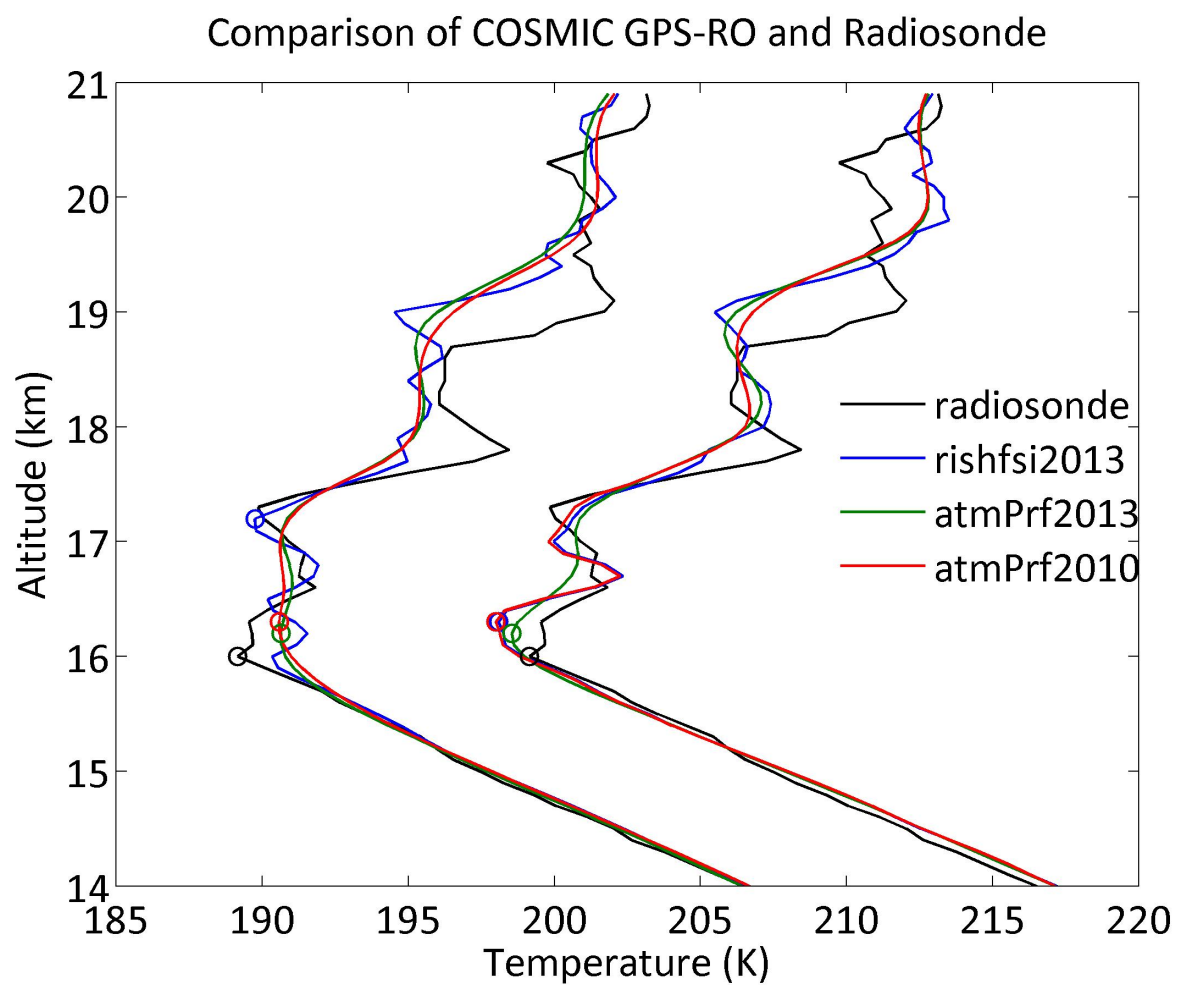
## Comparison of Three Retrievals of COSMIC GPS Radio Occultation Results in the Tropical Upper Troposphere and Lower Stratosphere

\*Noersomadi Noersomadi<sup>1,2</sup>, Toshitaka Tsuda<sup>1</sup>

1. Research Institute for Sustainable Humanosphere (RISH), Kyoto University, Japan, 2. Center of Atmospheric Science and Technology, National Institute of Aeronautics and Space (LAPAN), Indonesia

Combining Geometrical Optics (GO) and Wave Optics (WO), COSMIC Data Analysis and Archive Center (CDAAC) retrieved two sets of the dry atmosphere temperature ( $T$ ) from COSMIC GPS radio occultation (GPS-RO), which are named as atmPrf2010 and atmPrf2013. The sewing height between WO and GO varied at 10-20 km for atmPrf2010, and it was fixed at 20 km for atmPrf2013. We also derived  $T$  by applying WO throughout the troposphere and the stratosphere up to 30 km altitude, which is named as rishfsi2013. The height resolution of the atmPrf2010 varied depending on the sewing height, while rishfsi2013 provides high-resolution  $T$  profiles up to 30 km. The  $T$  profiles by atmPrf2013 are smoothed over 500 m. Among the three datasets, we compared the  $T$  variations in the upper troposphere and lower stratosphere (UTLS) over the tropics from October 1, 2011, to March 31, 2012, when radiosonde soundings were conducted as the CINDY-DYNAMO 2011 campaign. The mean  $T$  profiles were consistent between atmPrf2010 and atmPrf2013. In the other hand, the rishfsi2013 results were colder/warmer than the CDAAC retrievals below/above the tropopause. The mean  $T$  difference between atmPrf2013 and atmPrf2010 was 0.17 K at the cold point tropopause (CPT), and  $-0.38$  K at the lapse rate tropopause (LRT), respectively. The rishfsi2013 showed the colder  $T$  at CPT by  $-0.77$  K and  $-0.59$  K relative to atmPrf2013 and atmPrf2010, respectively, and the warmer  $T$  by 0.60 K and 0.20 K at LRT. During CINDY-DYNAMO we found 134 radiosonde soundings which coincided with GPS-RO within  $\pm 3$  hours and collocated within 200 km from GPS-RO. The mean  $T$  difference at CPT from radiosondes was 0.32 K, 0.49 K and  $-0.24$  K for atmPrf2010, atmPrf2013 and rishfsi2013, respectively. That is, both atmPrf2013 and atmPrf2010 had a positive bias at CPT, while rishfsi2013 had a negative bias. Similar comparisons at LRT were  $-0.45$  K,  $-0.69$  K, and  $-0.41$  K, respectively, showing a positive bias for all GPS-RO retrievals. The rishfsi2013 is consistent with the retrievals at CDAAC and radiosondes, and it is useful for the studies of mesoscale  $T$  perturbations in the UTLS because of the good height resolution.

Keywords: COSMIC GPS Radio Occultation, Full Spectrum Inversion, Retrieval Algorithm, UTLS



## Development of a cloud particle sensor for radiosonde sounding

\*藤原 正智<sup>1</sup>、杉立 卓治<sup>2</sup>、清水 健作<sup>2</sup>、林 真由美<sup>3</sup>、相良 一生<sup>3</sup>、稲飯 洋一<sup>4</sup>、柴田 隆<sup>5</sup>、岩崎 杉紀<sup>6</sup>、清水 厚<sup>7</sup>、野間 靖久<sup>3</sup>、川北 英明<sup>3</sup>、中川 太郎<sup>8</sup>、奥村 聡<sup>8</sup>

\*Masatomo Fujiwara<sup>1</sup>, Takuji Sugidachi<sup>2</sup>, Kensaku Shimizu<sup>2</sup>, Mayumi Hayashi<sup>3</sup>, Kazuo Sagara<sup>3</sup>, Yoichi Inai<sup>4</sup>, Takashi Shibata<sup>5</sup>, Suginori Iwasaki<sup>6</sup>, Atsushi Shimizu<sup>7</sup>, Yasuhisa Noma<sup>3</sup>, Hideaki Kawagita<sup>3</sup>, Taro Nakagawa<sup>8</sup>, Satoshi Okumura<sup>8</sup>

1. 北海道大学 大学院地球環境科学研究所、2. 明星電気株式会社、3. 神栄テクノロジー株式会社、4. 東北大学、5. 名古屋大学、6. 防衛大学校、7. 国立環境研究所、8. 神栄株式会社

1. Faculty of Environmental Earth Science, Hokkaido University, 2. Meisei Electric Co. Ltd, 3. Shinyei Technology Co., Ltd, 4. Tohoku University, 5. Nagoya University, 6. National Defense Academy, 7. National Institute for Environmental Studies, 8. Shinyei Kaisha

A meteorological balloon-borne cloud sensor called the cloud particle sensor (CPS) has been developed. The CPS is equipped with a diode laser at ~790 nm and two photodetectors, with a polarization plate in front of one of the detectors, to count the number of particles per second and to obtain the cloud-phase information (i.e. liquid, ice, or mixed). The lower detection limit for particle size was evaluated in laboratory experiments as ~2 micro m diameter for water droplets. For the current model the output voltage often saturates for water droplets with diameter equal to or greater than ~80 micro m. The upper limit of the directly measured particle number concentration is ~2 cm<sup>-3</sup> (2 × 10<sup>3</sup> L<sup>-1</sup>), which is determined by the volume of the detection area of the instrument. In a cloud layer with a number concentration higher than this value, particle signal overlap and multiple scattering of light occur within the detection area, resulting in a counting loss, though a partial correction may be possible using the particle signal width data. The CPS is currently interfaced with either a Meisei RS-06G radiosonde or a Meisei RS-11G radiosonde that measures vertical profiles of temperature, relative humidity, height, pressure, and horizontal winds. In the presentation, results from four flights, two in Japan and two in Indonesia, are discussed in detail.

キーワード：雲、ラジオゾンデ

Keywords: cloud, radiosonde

## 非保存項とバランスする3次元残差流の考察

### On the three-dimensional residual mean flow balanced with nonconservative terms

\*木下 武也<sup>1</sup>、佐藤 薫<sup>2</sup>

\*Takenari Kinoshita<sup>1</sup>, Kaoru Sato<sup>2</sup>

1. 海洋研究開発機構、2. 東京大学 大学院理学系 地球惑星科学専攻

1. Japan Agency for Marine-Earth Science and Technology, 2. Department of Earth and Planetary Science, Graduate School of Science, The University of Tokyo

波と平均場の相互作用を記述する変形オイラー平均（TEM）系は、中層大気の力学的な子午面循環を理解する上で非常に有用な診断ツールである。また1980年代からTEM系を3次元に拡張する研究が行われ、理論上は純粋な3次元TEM系の導出に成功していると考えられている。しかし解析を行う上で、特に物質輸送（残差流）においてはいくつか問題がある。例えば、2次元残差流と異なり、3次元残差流の水平成分にはバランス流（地衡流）、鉛直成分には温位面のゆがみに伴う流れが含まれること、さらに準停滞性感星波が卓越する冬半球成層圏では、惑星波そのものによる流れが無視できないこと等である。これらの流れは実質的な物質輸送を起こさない流れと考えられている。そこで、本研究では非保存項（特に非断熱加熱率）と2次元残差流の関係に着目し、非保存項とバランスする3次元残差流の導出を新たには行う。

キーワード：子午面循環、中層大気

Keywords: meridional circulation, middle atmosphere

## Impacts of mesospheric westerly-jet instability on the middle and lower atmosphere

\*江口 菜穂<sup>1</sup>、廣岡 俊彦<sup>2</sup>、小寺 邦彦<sup>3</sup>

\*Nawo Eguchi<sup>1</sup>, Toshihiko Hirooka<sup>2</sup>, Kunihiro Koderu<sup>3</sup>

1. 九州大学 応用力学研究所、2. 九州大学 理学研究院 地球惑星科学部門、3. 名古屋大学 宇宙地球環境研究所  
1. RIAM, Kyushu University, 2. DEPS, Kyushu University, 3. ISEER, Nagoya University

Koderu et al. [ACP, 2016] reported that an exceptional event of a strengthening of the subtropical jet (STJ) occurred in the stratosphere in association with a sudden equatorward shift of the stratospheric polar night jet (PNJ) in early December 2011. The exceptional rapid downward extension of STJ was developed from the lower mesosphere to the lower stratosphere, and the impact of this event farther penetrated into the troposphere in two regions, in the northern polar region and the tropics. The abrupt transformation of the STJ and PNJ is found to be associated with little connection to the upward propagation of planetary waves from the troposphere.

Analyses of minor constituent and wind fields derived from Aura MLS observations show that the strengthening of the PNJ and STJ were originated from the upper mesosphere and its mechanism could be explained by a wave-mean flow interaction which seems to be caused by large-scale waves enhanced through barotropic and/or baroclinic instability in mid- to high latitudes of the mesosphere. The detailed mechanism for the strengthening of both PNJ and STJ in the mesosphere and the impact on the stratosphere and troposphere will be shown in the presentation.

キーワード：亜熱帯ジェットと極夜ジェット、中間圏-成層圏-対流圏 相互作用

Keywords: subtropical jet and polar night jet, mesosphere-stratosphere-troposphere interaction