

Application of Cluster Analysis to GNSS Data in the Angular Velocity Space: Identification of Crustal Blocks and Evaluation of Plate Interaction

*高橋 温志¹、岡崎 智久¹、竹内 孝²、岩田 具治²、深畑 幸俊³

*Atsushi Takahashi¹, Tomohisa Okazaki¹, Koh Takeuchi², Tomoharu Iwata², Yukitoshi Fukahata³

1. 京都大学大学院理学研究科、2. NTTコミュニケーション科学基礎研究所、3. 京都大学防災研究所

1. Graduate School of Science, Kyoto University, 2. NTT Communication Science Laboratories, 3. Disaster Prevention Research Institute, Kyoto University

The motion of a rigid plate on a sphere is expressed as rotation around an axis that passes through the center of the earth. Recently, statistical approaches were proposed to identify boundaries of crustal blocks from observed GNSS data. Simpson et al. (2012) showed that through a cluster analysis of GNSS data, block boundaries can be distinguished objectively. Savage and Simpson (2013) extended the study by adding an iterative algorithm to take account of the effect of spherical geometry. These studies successfully showed a way to identify block structures in the West Coast of the U.S.

However, it is still difficult to apply the method to global GNSS data in order to identify plate blocks considering the effect of spherical geometry. So, we developed a more intuitive method to tackle this problem.

The relationship among the geographical location of the GNSS station, observed velocity at the GNSS station, and candidates of the Euler pole can be expressed as a vector equation: the cross product of an angular velocity vector and a position vector of a GNSS station is an observed velocity vector.

From this relationship, candidates of the Euler pole can be expressed as a straight line in the angular velocity space. We can expect that each line that correspond to each GNSS data in the same rigid crustal block crosses at a point in the angular velocity space.

To spot a crossing point, we made a matrix whose components correspond to the distance between lines. In order to find a structure in the matrix, we analyzed this matrix using a clustering algorithm called a Bayesian Community Detection model. The method provides a block matrix structure within it for a given threshold. By this analysis, we can spot the candidates of Euler poles as a crossing point based on the distances of lines in the angular velocity space. Each identified crossing point would represent a cluster, namely a crustal block.

However, an actual crustal block has internal deformation in it. So, we considered how such deformation affect the deviation of the lines from their original crossing point. We first analyzed the same data set of Simpson et al. (2012) in the San Francisco Bay Area, West Coast of U.S. for comparison.

The obtained result had four major crossing points, which was almost the same as Simpson et al. (2012). However, if we gave a smaller threshold, we obtained 16 minor clusters which reflect internal deformation of crustal blocks. The minor crossing points almost aligns on a straight line that connects the major crossing points.

These minor crossing points can be attributed to the effect of coupling on the faults that bound major blocks in this area. If there is some coupling on such faults, crustal movement must systematically deviate from the rigid block rotation due to internal elastic deformation caused by fault coupling. In other words, we can extract information about fault coupling from this clustering analysis.

A self-organizing map exploratory analysis of the flow duration curve in the United States

*Geoffrey Fouad¹, André Skupin²

1. Monmouth Univ, 2. San Diego State Univ

The flow duration curve (FDC) describes the full range of streamflow magnitude observed at a site, and is strongly influenced by upstream conditions of the basin. Upstream conditions are quantified using basin characteristics, such as mean elevation and annual precipitation. A large variety of data now exists to characterize basins in the United States (US). However, a greater understanding of how this data relates to the FDC is critical, considering basin characteristics are typically the basis for predicting the FDC of ungauged basins. The present study performs an exploratory analysis of the FDC and characteristics of 918 basins in the US using a neural network technique called the self-organizing map (SOM). The SOM is applied for its ability to cluster and visualize fine-scale variation in large datasets. Both of these exploratory frameworks (i.e. clustering and visualization) are used to compare individual flows of the FDC to basin characteristics. Clusters based on common basin characteristics poorly agree with those of the FDC (36% agreement), which is less than prior work in smaller study areas, such as Italy. This is an important point because clusters based on basin characteristics are used to deploy models for predicting the FDC. Basin characteristics primarily cluster basins into geographic regions, whereas the FDC generates clusters of basins distributed throughout the US. Geographic proximity therefore may not be an indicator of similarity in the FDC between basins. Variation of the FDC is also unrelated to some common basin characteristics, such as topographic variables, as indicated through SOM data visualizations. This may partially explain the disagreement between the two sets of clusters. The disagreement may also be because basin characteristics are only associated with certain parts of the FDC, but not the overall FDC. For instance, aridity, an index of precipitation lost to evapotranspiration, suppresses high flows possibly due to lower antecedent moisture conditions that moderate storm flows. High flows are also related to spring snowmelt represented using the percent of precipitation delivered as snow. Another association to a part of the FDC is that average to low flows vary with groundwater contributions (i.e. baseflow). Basin characteristics describing surface runoff are more related to high flows, whereas subsurface drainage has more influence on average to low flows. The processes that generate different flows should be accounted for in the clusters used to predict the FDC, and future research should evaluate if the tradition of using a single set of basin characteristics to cluster basins for predicting the FDC should be revised to select different basin characteristics depending on the flow targeted for prediction.

Keywords: basin hydrology, flow duration curve, self-organizing map, cluster analysis, data visualization, United States

Uncertainty quantification for groundwater management in the Danish buried valley systems by means of regression tree-based surrogate models

*Jihoon Park¹, Céline Scheidt¹, Jef Caers²

1. Department of Energy Resources Engineering, Stanford University, 2. Department of Geological Sciences, Stanford University

Uncertainty quantification is a key component for decision making in groundwater management. Such applications involve the building of large complex spatial models, the application of computationally intensive forward modeling codes and the integration of heterogeneous sources of uncertainty. An integral step for uncertainty quantification is to condition models to a variety of data. In the Danish groundwater management this consists of head, streamflow, recharge, well and geophysical (SkyTEM) data. Uncertainty quantification requires model calibration. This is a challenging problem when dealing with complex systems (such as the Danish buried valley system) and a wealth of data. Another difficulty is computational cost, since a proper model calibration should account for all data, all model variables and geological heterogeneity requires running many forward flow models.

In this research, a workflow is proposed to find posterior multivariate distribution of model parameters and predictions. First, dimensionality reduction with mixed principle component analysis (PCA) is performed to incorporate different types of available data. A regression model is built for uncertain model parameters and misfit between simulated and observed data. As a regression model, we use a boosted regression tree because it offers high quality predictive model in nonlinear problems. Another advantage of tree-based approach is that we can obtain predictor importance, which can be directly used in sensitivity analysis.

Models that match the data are found by Approximate Bayesian Computations (ABC), where the likelihood is simply an indicator function of data mismatch. ABC requires exhaustive Monte Carlo sampling and running forward models. By using the regression model as surrogate forward model, we can obtain models conditioned to the data without intensive full forward runs. Regression models can also be constructed for predictions, such as the effect of establishing new wells for extraction.

We illustrate our method using a real field problem of decision making in the Danish groundwater system. Decisions include where to relocate drinking wells while minimizing the change of water produced and effects on farms and industrial areas. Well head and stream data are observed from monitoring wells. The proposed workflow is used to understand the effect of each parameter and to obtain the posterior distribution of 20 forecasts with newly acquired data.

Keywords: uncertainty quantification, regression analysis, model calibration, groundwater management

隕石および小惑星の可視近赤外反射スペクトルの多変量解析

Multivariate analysis of visible to near-infrared reflectance spectra of meteorites and asteroids

*洪 鵬¹、綿引 ゆり杏²、新原 隆史³、宮本 英昭^{1,2,3,4}、斎藤 侑輝^{5,6}、福水 健次^{5,6}

*Peng Hong¹, Yuria Watabiki², Takafumi Niihara³, Hideaki Miyamoto^{1,2,3,4}, Yuki Saito^{5,6}, Kenji Fukumizu^{5,6}

1. 東京大学大学院工学系研究科システム創成学専攻、2. 東京大学大学院新領域創成科学研究科複雑理工学専攻、3. 東京大学総合研究博物館、4. 東京大学大学院理学系研究科地球惑星科学専攻、5. 総合研究大学院大学、6. 統計数理研究所

1. Department of Systems Innovation, Graduate School of Engineering, The University of Tokyo, 2. Department of Complexity Science and Engineering, Graduate School of Frontier Sciences, The University of Tokyo, 3. The University Museum, The University of Tokyo, 4. Department of Earth and Planetary Science, Graduate School of Science, The University of Tokyo, 5. The Graduate University of Advanced Studies, 6. The Institute of Statistical Mathematics

Asteroids and meteorites have been considered as remnants of the early evolution of the solar system and understanding their formation history provide constraints on the physical and chemical conditions of the solar nebula and its subsequent evolution [1]. In order to better understand the compositions of asteroids, mineralogical relationship between asteroids and meteorites have been studied based on reflectance spectra obtained by ground- and space-based telescope [2]. Their relationship, however, remains poorly constrained except for a S-type asteroid Itokawa and LL chondrites [3]. Although spectral similarities have been suggested between V-type asteroids and HED meteorites and between carbonaceous chondrites and C- and/or D-type asteroids, detailed relationship is not well constrained. The major obstacle to compare asteroids and meteorites is that the classification scheme between asteroids and meteorites are fundamentally different. Asteroids are classified mainly based on the shape of their reflectance spectra and orbital parameters [4], while meteorites are classified by detailed petrology and mineralogy [5]. Based on principal component analysis, Britt et al. (1992) [6] compare reflectance spectra of asteroids with those of meteorites. They find that most of principal components of meteorite spectra are offset from those of the bulk of the asteroid population. However they used only eight color spectra and the spectra are limited within visible wavelength from 0.35 to 1.0 μm . Since characteristic absorptions are observed in the near-infrared range, including pyroxene (2 μm) and hydrated silicates (3 μm), using reflectance spectra with a wider wavelength range could result in a better spectral matching between asteroids and meteorites. In this study we developed a database of reflectance spectra for asteroids and meteorites with wavelengths ranging from 0.4 to 4 μm and perform multivariate analysis.

We obtained reflectance spectra for meteorites and asteroids from RELAB [7] and the database of Planetary Spectroscopy at MIT [8], respectively. Asteroid spectra for 3 μm band are obtained from previous studies [e.g., 9]. All the spectra were sampled with cubic spline fits at a wavelength interval of 0.05 μm . Meteorite spectra are chosen based on the following criteria: (1) particulate sample, (2) phase angle is 30°, (3) sample is from valid/known meteorite, (4) not heated/laser-irradiated, inclusion or impact melt sample, (5) not moon sample or lunar meteorite. The developed database includes 534 meteorite spectra and 369 asteroid spectra. We performed principal component analysis on the database and measure how well each meteorite group and asteroid group is separated on the principal component space. Our preliminary analyses show that (1) using spectra from 0.4 to 2.5 μm , accuracy of separation among ordinary chondrites, carbonaceous chondrites, HED meteorites is significantly improved compared with the case using spectra from 0.4 to 1.0 μm , and (2) the accuracy of separation is not significantly improved when using meteorite spectra from 0.4 to 4 μm compared with the case using spectra from 0.4 to 2.5 μm .

References: [1] DeMeo F.E. & Carry B. (2014) *Nature*, 505, 629. [2] Pieters C.M. & McFadden L.A. (1994) *Annu. Rev. Earth Planet. Sci.*, 22, 457. [3] Nakamura, T. et al. (2011) *Science*, 333, 1113. [4] DeMeo F. E. et al. (2009) *Icarus*, 202, 160. [5] Weisberg M.K. et al. (2006) *Meteorites and the Early Solar System II*, 19. [6] Britt D. T. et al. (1992) *Icarus*, 99, 153. [7] Pieters C.M. & Hiroi T. (2004) *LPSC XXXV*, 1720. [8] <http://smass.mit.edu/home.html> [9] Rivkin A.S. et al. (2000) *Icarus*, 145, 351.

キーワード：小惑星、隕石、反射スペクトル

Keywords: asteroids, meteorites, reflectance spectra

Relationship between reflectance spectra of meteorites and asteroids visualized by the correlation distance and t-SNE

*宮本 英昭¹、新原 隆史¹、洪 鵬¹、日野 英逸²

*Hideaki Miyamoto¹, Takafumi Niihara¹, Peng Hong¹, Hideitsu Hino²

1. 東京大学、2. 筑波大学

1. University of Tokyo, 2. University Tsukuba

Classification of asteroids based on orbits, sizes, and reflectance spectra have been performed for decades to understand the nature of small bodies. As for asteroids, asteroid taxonomic systems based on color, albedo, and spectral shape have been developed and modified/expanded to grasp their variations. While each spectral class is believed to represent a specific composition of asteroids, their correlation is still not fully understood because of the nature of reflectance spectrum of rock-forming minerals; The relationship between reflectance spectra of an asteroid and a meteorite is essentially difficult to unravel without detailed analyses of the shapes of spectra. Even so, several previous attempts exist to statistically solve this issue. For example, Britt et al (1992) successfully produced a map of statistically defined spectral similarities and found that principal component analysis is successful at characterizing the primary spectral variance in the asteroid and meteorite populations. In other words, statistical classifications of spectral types without detailed interpretation of spectral shapes can be useful to overview the variation and relationships within a spectral data set, even though there are known difficulties of comminution, melting, mixing, and space weathering. In this work, we expand the above idea by applying to a wider and denser datasets of reflectance spectra for both meteorites and asteroids. We use published databases of RELAB's laboratory measurements of meteorites and Planetary Spectroscopy at MIT's asteroid spectra, which are resampled by cubic spline fits in the wavelengths ranging from 0.45 to 2.45 μm with the wavelength resolution of 0.05. We statistically analyze the distance of spectra by means of such as Partial Autocorrelation, Dynamic Time Warping, Pearson Correlation, and Euclidean distance. Results are visualized by using 6 kinds of schemes including t-SNE (t-Stochastic Neighbor Embedding). We find that correlations of both meteorites and asteroids are generally shown by this simple scheme. Preliminary results indicate that (1) V-type asteroids generally match HED meteorites, (2) S-type asteroids locate near ordinary chondrites but they do not entirely match each other, which may reflect the effect of space weathering (3) C-type asteroids match carbonaceous chondrites and they are separated into a few sub clusters.

キーワード：小惑星、隕石、反射スペクトル

Keywords: asteroid, meteorite, reflectance spectra

Systematic attribution of observed circulation trends to external forcing and internal variability

*Christian L. E. Franzke¹

1. University of Hamburg

The atmospheric circulation can be efficiently described by just a few regime states or teleconnection patterns. For the systematic identification of these regime states a novel space-time clustering method has been developed (FEM-BV-VARX). This method identifies persistent regime states which are important for predictions. In my presentation I will discuss the use of this method for the attribution of circulation trends and extreme events.

Keywords: Regime States, Circulation Trends, Extreme Events, Clustering Method

Data-driven science for solving problems in geosciences

*赤穂 昭太郎¹

*Akaho Shotaro¹

1. 産業技術総合研究所

1. The National Institute of Advanced Industrial Science and Technology

Recent technological development of measurement and observation enables us to obtain a large amount of high-dimensional data. Effective use of high-dimensional data requires a robust framework to make the tight connection of information science to the original purpose of data analysis derived from various scientific disciplines [1]. Since 2013, we have launched a big scientific project entitled as “Initiative for high-dimensional data-driven science through deepening sparse modelling (FY2013-FY2017)” funded by the Ministry of Education, Culture, Sports, Science and Technology (MEXT) in Japan. The aim of this project is to establish a novel framework of data analysis for natural sciences, namely, data-driven science. Its target fields are very wide including geosciences, astronomy, biology, and medical and brain sciences. In this presentation, we introduce the concept of data-driven science and some applications to geosciences [e.g. 2-5].

[1] Igarashi Y, Nagata K, Kuwatani T, Omori T, Nakanishi-Ohno Y, Okada M (2016) Three levels of data-driven science. J Phys Confere Ser 699: 012001-1 - 012001-13.

[2] Kuwatani T, Nagata K, Okada M, Toriumi M (2014) Markov random field modeling for mapping geofluid distributions from seismic velocity structures. Earth Planet Space 66: 5-1 - 5-9.

[3] Kuwatani T, Nagata K, Okada M, Watanabe T, Ogawa Y, Komai T, Tsuchiya N (2014) Machine-learning techniques for geochemical discrimination of 2011 Tohoku tsunami deposits. Sci Rep 4: 7077-1–7077-6.

[4] Nakata R, Kuwatani T, Okada M, Hori T (2016) Geodetic inversion for spatial distribution of slip under smoothness, discontinuity, and sparsity constraints. Earth Planet Space 68, 20-1 –20-10.

[5] Araki T, Ochi T, Matsumoto N, Akaho S (2015) Robust estimation of spatio-temporal distribution of slow slip event by switching model, Spatial Statistics.

キーワード：データ駆動科学、スパースモデリング、機械学習

Keywords: data-driven science, sparse-modeling, machine learning

Source Term Estimation for atmospheric release In Nuclear Accidents Using ensemble Kalman filter: a validation with wind tunnel experiment

*sheng fang¹

1. Tsinghua University

In a nuclear accident, the source term which contains the release rate of atmospheric radionuclide leakage is a key issue of the nuclear emergency response. One effective way to obtain the source term is the inverse modelling method that is based on radionuclide transportation process and environment radiation monitoring data. However, the inverse modelling method may be sensitive to specific site conditions. Therefore, a case-by-case validation is important.

In this study, a source term estimation method based on the Ensemble Kalman filter (EnKF) data assimilation technique was proposed for source term estimation and a wind tunnel experiment that simulated a highly heterogeneous Chinese nuclear power plant site was performed to validate this method.

The EnKF method takes the concentrations measured at different positions as input parameters and iteratively refined the source term estimate by reducing the discrepancy between the experimental measurements and the concentration prediction that is obtained by certain atmospheric transport model based on the estimated source term. In order to improve the accuracy of the transport model, CALMET was used to generate the wind field that is necessary to drive RIMPUFF.

A 1:2000 wind tunnel was performed to comprehensively evaluate the performance of the proposed method, which simulated both ground and stack release scenarios with a dominant wind direction at a typical Chinese nuclear power plant. The incoming flow in the wind tunnel is adjusted according to the annual mean wind speed and vertical profile that has been measured in recent years near the NPP site. The experiment simulated a ground release scenario by using CO as the tracer gas, which the release position is in the center of the nuclear power plant site. Concentrations are measured at 264 positions in the downwind direction of the release, which equals to 6500m away from the source in a real world scale. The estimated release rate was compared with the true release rate that was used in the wind tunnel experiment, in order to assess the convergence and accuracy of the proposed method. Meanwhile, the concentration measured in the wind tunnel was both qualitatively and quantitatively compared with the simulation values that are calculated by CALMET-RIMPUFF using the estimated release rate.

The validation results demonstrate that the proposed method has a fast convergence rate. The estimated release rate matches the real one used in the experiment well for both release cases, which the bias is less than 50% for the worst case estimate. As for the concentrations predicted with the estimated release rate, they are not only qualitatively consistent with the spatial distribution of the measured concentrations, but also show satisfactory results with respect to statistical evaluation metrics for both release cases. The Pearson correlation coefficient is higher than 74~87%, the FAC2 is 42~54% and the FAC5 is 77~80% for all the experiment cases. The source term estimation of the stack release case slightly outperforms that of the ground release case, due to the better atmospheric transport modelling. The experiment also reveals that CALMET-RIMPUFF tends to underestimate the concentrations, which are the primary source of the bias in the estimates. Therefore, the atmospheric model is critical for the performance of the source term estimation, which shall be our future work focus.

Keywords: Source term estimation, Data assimilation, Atmospheric dispersion, Radioactive release

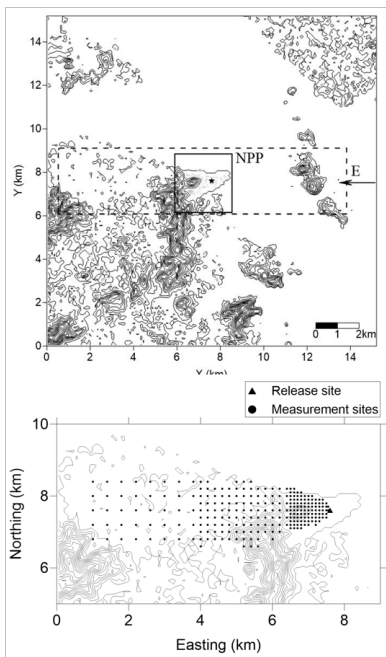


Fig. 1 Topography and measurement network of the wind tunnel experiment

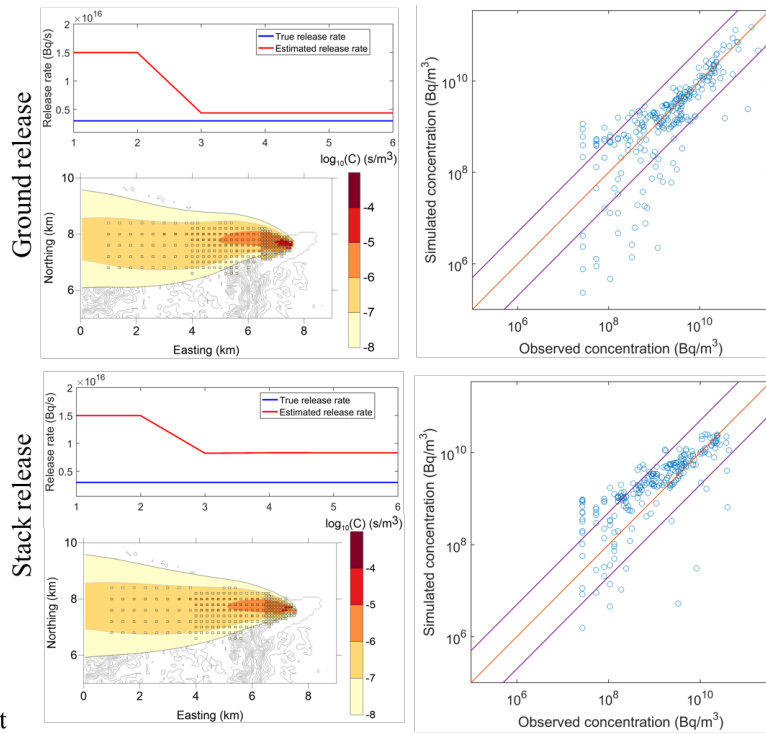


Fig. 2 source term estimation results. Convergence curve, simulated plume using the source term estimate and the corresponding scatter plot

岩石-水相互作用を支配する不均質反応の時空間ダイナミクスの統計的推定

Bayesian inversion analysis of nonlinear spatiotemporal dynamics of heterogeneous reactions in rock-water interactions

*大森 敏明¹、森本 亮太¹、桑谷 立²、岡本 敦³、福島 孝治⁴

*Toshiaki Omori¹, Ryota Morimoto¹, Tatsu Kuwatani², Atsushi Okamoto³, Koji Hukushima⁴

1. 神戸大学、2. 海洋研究開発機構、3. 東北大学、4. 東京大学

1. Kobe University, 2. JAMSTEC, 3. Tohoku University, 4. University of Tokyo

It is essential to extract nonlinear dynamics from time-series data as an inverse problem in natural sciences. We propose a Bayesian statistical framework for extracting nonlinear spatiotemporal dynamics of surface heterogeneous reactions from sparse and noisy observable data. Surface heterogeneous reactions are chemical reactions with conjugation of multiple phases, and they have the intrinsic nonlinearity of their dynamics caused by the effect of surface-area between different phases. We employ sequential Monte Carlo algorithm and other statistical algorithm to partial observation problem, in order to simultaneously estimate the time course of hidden variables and the kinetic parameters underlying dynamics. Using our proposed method, we show that the rate constants of dissolution and precipitation reactions, which are typical examples of surface heterogeneous reactions, and the diffusion constants, as well as the spatiotemporal changes of solid reactants and products, were successfully estimated only from the observable temporal changes in the concentration of the dissolved intermediate product.

[1] Omori et al., Bayesian inversion analysis of nonlinear dynamics in surface heterogeneous reactions, Phys. Rev. E, 94, 033305 (2016)

キーワード：データ駆動科学、機械学習

Keywords: Data-driven science, Machine learning

Detection of principal dynamical modes of changing climate

*Dmitry Mukhin¹, Andrey Gavrilov¹, Evgeny M Loskutov¹, Alexander Feigin¹

1. Institute of Applied Physics of RAS

The success in empirical climate modeling strongly depends on selection of model variables used for reduced representation of system's dynamics. In fact, we can say that the states of the climate system are determined by a combination of external perturbations (forcings) and unknown internal variables. Thus, the detection of principal internal modes of changing climate is crucial point in modeling problem. In the presentation the method for extraction such modes from data is presented. The method is based on the Nonlinear Dynamical Mode (NDM) expansion [1,2], but takes into account forcing time series applied to the system: each NDM is represented by hidden time series governing the observed variability, which, together with external forcing signals, are mapped onto the data space.

In this work the method is used for reconstructing and studying the principal modes of global climate variability on inter-annual and decadal time scales, adjusted for the external forcings such as anthropogenic emissions, variations of the solar activity and volcanic activity. The structure of the obtained modes as well as their response to external factors, e.g. forecast their change in 21 century under different CO2 emission scenarios, are discussed.

[1] Mukhin, D., Gavrilov, A., Feigin, A., Loskutov, E., & Kurths, J. (2015). Principal nonlinear dynamical modes of climate variability. *Scientific Reports*, 5, 15510. <http://doi.org/10.1038/srep15510>

[2] Gavrilov, A., Mukhin, D., Loskutov, E., Volodin, E., Feigin, A., & Kurths, J. (2016). Method for reconstructing nonlinear modes with adaptive structure from multidimensional data. *CHAOS*, 26(12), 123101. <http://doi.org/10.1063/1.4968852>

Keywords: nonlinear dynamical modes, data expansion, empirical modeling

Data-adaptive Harmonic Decomposition and Stuart-Landau closure modes

*Dmitri Kondrashov^{1,2}

1. University of California, Los Angeles, 2. Institute of Applied Physics of the Russian Academy of Sciences, Nizhny Novgorod, Russia

Novel signal processing technique will be presented that estimates power and phase spectra of multivariate dataset via data-adaptive modes obtained in time-embedded phase space. The key feature of the Data adaptive Harmonic decomposition (DAH) method relies on the construction of covariance matrices that exploit cross correlations differently than in Principal Component Analysis and Multichannel Singular Spectrum Analysis. Eigenmodes associated with DAH covariance matrices form an orthogonal set of oscillating data-adaptive harmonic modes (DAHMs) that come in pairs and in exact phase quadrature for a given Fourier frequency, aka *sine* and *cosine*.

The recent Multilayer Stochastic Model (MSM) framework introduced in [Kondrashov, Chekroun and Ghil, 2015] emphasizes the ubiquitous role of nonlinear, stochastic as well as memory effects for the derivation of data-driven closure models with good skill in simulating and predicting main dynamical features of the targeted spatiotemporal field as an output of a high-end geophysical model, or as a set of observations. However, if the input data are not numerous enough and exhibit mixture of different spatiotemporal scales, the analysis may reveal multiple predictors and complex model structure. The DAH decomposition provides an attractive data-adaptive alternative via multilayer stochastic Stuart-Landau models (MSLM), which reduce the data driven modeling effort to elemental MSMs stacked per frequency with fixed and much smaller number of coefficients to estimate. In particular, the pairs of data-adaptive harmonic coefficients (DAHCs), obtained by projecting the input dataset onto DAHMs, can be effectively modeled within a universal parametric family of simple nonlinear stochastic models - coupled Stuart-Landau oscillators stacked per frequency, and driven at all frequencies by the same noise realization. DAH-MSLM results for climate modeling and prediction will be presented.

Keywords: stochastic inverse modeling, climate prediction, data-adaptive decomposition

Conditional stochastic model chains in reduced space: Towards efficient simulation of non-stationary typhoon precipitation patterns

*Boyko Dodov¹

1. AIR Worldwide Boston

Stochastic simulation of realistic and statistically robust patterns of Tropical Cyclone (TC) induced precipitation is a challenging task. It is even more challenging in a catastrophe modeling context, where tens of thousands of typhoon seasons need to be simulated in order to provide a complete view of flood risk. Ultimately, one could run a coupled global climate model and regional Numerical Weather Prediction (NWP) model, but this approach is not feasible in the catastrophe modeling context and, most importantly, may not provide TC track patterns consistent with observations. Rather, we propose to leverage NWP output for the observed TC precipitation patterns (in terms of downscaled reanalysis 1979-2015) collected on a Lagrangian frame along the historical TC tracks and reduced to the leading spatial principal components of the data. The reduced data from all TCs is then grouped according to timing, storm evolution stage (developing, mature, dissipating, ETC transitioning) and central pressure and used to build a dictionary of stationary (within a group) and non-stationary (for transitions between groups) covariance models. Provided that the stochastic storm tracks with all the parameters describing the TC evolution are already simulated, a sequence of conditional samples from the covariance models chosen according to the TC characteristics at a given moment in time are concatenated, producing a continuous non-stationary precipitation pattern in a Lagrangian framework. The simulated precipitation for each event is finally distributed along the stochastic TC track and blended with a non-TC background precipitation. The proposed framework provides means of efficient simulation (10000 seasons simulated in a couple of days) and robust typhoon precipitation patterns consistent with observed regional climate and visually undistinguishable from high resolution NWP output. The framework is used to simulate a catalog of 10000 typhoon seasons implemented in a flood risk model for Japan.

Keywords: Reduced models, Stochastic simulation, Typhoon precipitation

Data-driven Nonlinear Dynamical Models for Forecast of Climate Variability

*Alexander M Feigin¹, Dmitry N Mukhin¹, Andrey S Gavrilov¹, Aleksey F Selesnev¹, Evgeny M Loskutov¹

1. Institute of Applied Physics RAS

We apply new methodology of empirical modeling and forecast of nonlinear dynamical system variability [1] to study of climate systems' variability. The methodology is based on two approaches: (i) nonlinear decomposition of spatially distributed data [2], that provides low-dimensional embedding for further modeling, and (ii) construction of empirical model in the form of low dimensional random dynamical ("stochastic") system [3].

The methodology abilities are demonstrated by modeling and forecast of ENSO system variability. Three monthly data sets are used: global sea surface temperature anomalies, troposphere zonal wind speed, and thermocline depth; all data sets are limited by 30 S, 30 N and have horizontal resolution $1^{\circ} \times 1^{\circ}$. We compare results of optimal data decomposition as well as prognostic skill of the constructed models for different combinations of involved data sets. We also present comparative analysis of ENSO indices forecasts fulfilled by our models and by IRI/CPC ENSO Predictions Plume.

[1] A. Gavrilov, D. Mukhin, E. Loskutov, A. Feigin, 2016: Construction of Optimally Reduced Empirical Model by Spatially Distributed Climate Data. 2016 AGU Fall Meeting, Abstract NG31A-1824.

[2] D. Mukhin, A. Gavrilov, E. Loskutov, A. Feigin, J. Kurths, 2015: Principal nonlinear dynamical modes of climate variability, Scientific Reports, rep. 5, 15510; doi: 10.1038/srep15510.

[3] Ya. Molkov, D. Mukhin, E. Loskutov, A. Feigin, 2012: Random dynamical models from time series. Phys. Rev. E, Vol. 85, n.3.

Keywords: Nonlinear Dynamical Model, Forecast of Climate Variability, Nonlinear Data Decomposition

Data-driven model for investigation of the mid-Pleistocene transition

*Evgeny M Loskutov¹, Dmitry N Mukhin¹, Andrey S Gavrilov¹, Alexander M Feigin¹

1. Institute of Applied Physics RAS

In this work we apply a data-driven model for the analysis of complex spatially distributed geophysical data. We are focused on the investigation of critical transitions on paleo timescales. Namely we investigated mid-Pleistocene transition which led to change of dominate cycles of glacial variability in Pleistocene.

We demonstrate the good performance of applying our data-driven model to analysis of paleoclimate variability. In particular, we discuss the possibility of detecting, identifying and prediction of the mid-Pleistocene transition by means of nonlinear empirical modeling using the paleoclimate record time series.

The study is supported by Government of Russian Federation (agreement #14.Z50.31.0033 with the Institute of Applied Physics of RAS).

Keywords: Data-driven Modeling, Critical Transitions, Time Series Analysis, Mid Pleistocene Transition

元素拡散を考慮した斑晶鉱物の累帯構造の解析: ベイズ統計に基づくアプローチ

Analysis of zonal structure of phenocryst minerals considering element diffusion: Approach based on Bayesian statistics

*森里 文哉¹、小澤 一仁¹

*Fumitoshi Morisato¹, Kazuhito Ozawa¹

1. 東京大学大学院理学系研究科地球惑星科学専攻

1. Department of Earth and Planetary Science, Graduate School of Science, The University of Tokyo

火山岩中の斑晶に見られる累帯構造からは、メルトとの平衡が保証されれば分配係数を用いて自由度が大きく均質化のタイムスケールの短いメルト組成や結晶化条件の時間変化に関する時系列データが得られ、地殻内部での分化プロセスに関する物理プロセスの情報や、初生マグマに関する制約が可能になると期待される。しかし、結晶中の元素の拡散のために分配係数を用いた解析では不十分な場合が多い。一方で、元素拡散の影響を受けた組成累帯構造から、拡散の影響を見積もることができれば、時間情報を得ることができる。しかし、多段階の結晶化過程を反映し累帯構造が複雑になると、解析時に考慮すべきパラメータ数が増加し、パラメータ間の依存関係も複雑になる。本研究では、多段階の結晶化過程を経験した斑晶鉱物の累帯構造から元素拡散の影響を定量的に評価し、その影響を取り除いた累帯構造を推定した上でメルト組成情報を復元し、マグマが経験した物理プロセスを解明する手法を開発する。

今回我々は、結晶成長とそれに引き続く元素拡散による組成累帯構造形成に関するフォワードモデルを構築し、モデルを特徴づけるパラメータをParallel tempering Markov Chain Monte Carlo (PT-MCMC) 法で推定した。ここでは人工的に生成したデータにノイズを加算したものをテストデータとし、正しいパラメータが再現されるかどうかを試した。本モデルでは、累帯構造が何度かの結晶成長によって形成され、それぞれの結晶成長の後に元素拡散が進行するステージがあるものと仮定した。結晶成長ステージの区分については、orthopyroxeneであれば Cr_2O_3 のような拡散速度の小さいプロファイルに基づき制約した。

メルト組成がolivine, orthopyroxene, spinelの結晶分別によって変化する結晶化モデルを採用した。モデルでは、計算の起点となるメルト組成は天然の溶岩のうち最も初生的なものの全岩組成とし、繰り返し微量の固相が分別されるか、溶融して液相に加えられるとした。固相はそれぞれ球対称で、計算ステップごとにメルトと局所平衡である組成をもつ球殻が成長するものとした。分配係数は固相ごとに常に一定であるとして計算を行った。olivineとorthopyroxeneは微量元素および主要成分の MgO , FeO , SiO_2 のみに影響を与えるものとした。Spinelは微量元素組成のみに影響を与えるものとした。

Ozawa (2004)の方法に基づき、無次元化した拡散方程式を計算した。拡散係数は温度依存性のみを考慮した。計算スキームとして、空間方向は二次精度中心差分、時間方向は後退差分を採用した。上記のフォワードモデルと累帯構造の分析値を用い、擬似的な温度を表現するパラメータで拡張した8列のマルコフ鎖を生成し、parallel tempering Markov Chain Monte Carlo method (Hukushima & Nemoto, 1996)によりパラメータ推定を行った。規定回数のサンプリングの後、得られたサンプルのヒストグラム形状を確認しながら、パラメータの最適値を平均値またはモード値から決定した。

各ゾーニングセクションにおいて以下の5種類のパラメータをサンプリングした。

結晶成長ステージにおける初期Mg#, 最終Mg#, orthopyroxeneモード比, spinelモード比, および元素拡散ステージにおける最大圧縮時間の対数。

キーワード：火山岩、結晶成長、元素拡散

Keywords: Volcanic rocks, Crystal growth, Element diffusion

Managing soil organic carbon sequestration in China's croplands

*Guocheng Wang¹

1. Institute of Atmospheric Physics, Chinese Academy of Sciences

Increasing the soil organic carbon (SOC) pool in croplands can not only promote crop production but also mitigate climate change; however, the amounts of organic C that are input to balance the soil C loss and for targeted soil C sequestration in China's croplands are unclear. By using a biogeophysical model (Agro-C), we performed simulations with a high spatial resolution (10 km×10 km) across China's croplands to quantify the rate of C input under given scenarios. The model simulations showed that an average C input of 2.1 Mg C ha⁻¹ yr⁻¹ is required to stop soil C loss and that SOC density could approach the global mean of 55 Mg C ha⁻¹ by 2050 when 5.1 Mg C ha⁻¹ per year is incorporated into the soils of China's croplands. The quantified C inputs showed a large spatial disparity, depending on the existing SOC level, mean annual temperature and precipitation. The existing SOC level in Heilongjiang Province, where the cropland area accounts for 9.2% of the national total, is much higher but the current C input is much lower than it is in other regions in China. Increasing the organic C input should be given priority in this province; otherwise, the risk of SOC loss may increase.

Spatial modeling by joint use of physical law and geostatistics for grade analysis in geofluid-caused ore deposit

*LEI LU¹, Katsuaki KOIKE¹, Koki KASHIWAYA¹, Mohamad N. HERIAWAN², Ryoichi YAMADA³

1. Department of Urban Management, Graduate School of Engineering, Kyoto University, Japan, 2. Faculty of Mining and Petroleum Engineering, Bandung Institute of Technology, Indonesia., 3. Graduate School of Science, Tohoku University, Japan

Fluids play an important role in various aspects related to ore deposits and are crucial to the formation and development of ore deposits. This study aims to develop a method combines spatial statistics and physical law for metal contents in an ore deposit. Semivariogram clarified spatial correlation structure of the metal data and then kriging and sequential Gaussian simulation were used to generate spatial distribution of ore grade in three-dimensions. Transports of ore fluid and deposition process of metals were assumed as a physical process governed by the advection and diffusion. Analytical and numerical solution of an advection-diffusion equation was applied to ore grade data by calculating key parameters, advective velocity and diffusion coefficient. In order to simulate accurately, parameters were then revised as variables in different zone according to geological structure and geostatistical model. Matsumine and Fukazawa mines, typical large kuroko deposits in the Hokuroku district, Akita Pref., northern Japan, are selected to verify the combined method. Metal elements such as Cu, Zn, and Pb (chief metals of kuroko) of drilling cores were used for the spatial and physical modeling analyses. This method termed SPG (Spatial modeling by joint use of Physical law & Geostatistics) presents general main paths of ore fluid with respect to source, flow direction, and flow rate. The same technique and SPG are applied to a hydrothermal deposit in Sulawesi Islands, Indonesia. As the result, high metal content zones are well clarified and characterized, and a fluid flow pattern that formed the zones is expressed as colloidal texture which could indicate temperature and pressure changes in shallow subvolcanic activities.

Acknowledgments: The authors wish to express their gratitude to Dowa Metals & Mining Co., Ltd. and Hanaoka Eco-System Co., Ltd. for providing the precious drilling investigation materials.

Keywords: ore deposit, metal content, fluid flow, geostatistics, advection-diffusion

Solar terrestrial modelling: Application of systems methodologies

*Simon N Walker¹, Michael Balikhin¹, Richard Boynton¹

1. ACSE, University of Sheffield, Sheffield, UK

The response of the magnetosphere to changes in the solar wind is the result of the a complex series of processes, each acting over disparate scales in both space and time. The basic premise of physics based modelling is to understand each of these processes separately before coupling them into a single model. This diversity in process mechanisms and their temporal/spatial scales is one of the main reasons that such models have not been developed. Systems science provides a complementary route for modeling. This data driven approach involves the study of the evolution of a system as a whole based on a set of driving parameters. In this presentation we show how the application of systems modelling can be used to investigate such complex problems in space physics as magnetospheric response to the solar wind to the evolution of turbulence. In contrast to other data driven methodologies, systems techniques can also advance understanding of the micro-processes within the system. In addition, use of the systems approach, and especially frequency domain analysis, may be employed to validate analytical and numerical models.

Keywords: systems modelling, magnetospheric processes, solar wind response