

Initial findings of post-cruise research on IODP Expedition 352 cores

II: Radiogenic isotopes

Hongyan Li², Julie Prytulak³, Rex Taylor⁴, Wendy R. Nelson⁵, Julian A. Pearce⁶, *Mark K Reagan¹

1. University of Iowa, 2. Chinese Academy of Sciences, Guangzhou, 3. Imperial College London, 4. University of Southampton, 5. Towson University, 6. Cardiff University

The isotopic compositions of volcanic rocks recovered during IODP Expedition 352 vary significantly over time reflecting changes in magma sources as the nascent arc system developed. Fore-arc basalts (FAB) drilled at the two deepest sites, U1440 and U1441, were generated during near trench seafloor spreading after subduction initiation. These lavas have Nd and Hf isotopic ratios in the range of depleted mid-ocean ridge and back-arc basin basalts from the Indian and Philippine Sea plates. The FAB sample with the most depleted incompatible trace element composition has the highest Nd and Hf isotope ratios, indicating that the mantle may have been variably depleted in incompatible trace elements long before it was involved in melting to produce FAB. Pb isotopes in most FAB also are similar to those of Indian Ocean mid-ocean ridge basalts. However, some have Pb isotopic compositions trending towards values of the Pacific basaltic crust, which we attribute to alteration by fluids from the subducted Pacific plate. Os isotopes are radiogenic compared to primitive mantle, similar to Indian Ocean MORB. Sites U1439 and U1442 drilled a diverse sequence of boninites upslope from the FAB sites. Nd, Hf, and Pb isotopic ratios for low-Si boninites (LSB), which make up the lower 4/5 of the cores at these sites, plot between FAB and subducting Pacific basaltic crust. High-Si boninites (HSB) atop these sites have a narrow range of Hf isotopic compositions similar to those of the lowest values for LSB, but trend towards lower Nd isotope values. Pb isotopes for these lavas plot between those of Pacific basaltic crust and subducting sediments. Both LSB and HSB record a range of Os isotopes from depleted to mildly radiogenic values. The Nd-Hf-Pb isotopic compositions of LSB can be explained by flux melting of a strongly depleted mantle source involving a subduction component largely derived from basaltic crust. The younger HSB are generated by extreme degrees of melting of harzburgitic mantle, with incompatible trace elements and Nd, Hf, and Pb isotopes modified by fluids and melts derived from subducted basalt and sediment. Eruption of boninites began about the same time as volcanism transitioned from rapid sea-floor spreading to focused edifice building.¹ The enrichment of elements from the subducting slab in all boninites including both relatively low-temperature fluid soluble elements such as Pb, and relatively high-temperature melt-soluble elements such as Hf, is consistent with the boninite genesis in the nascent Izu-Bonin-Mariana subduction system beginning at the time of first slab melting or first formation and subsequent melting of melange diapirs.²

¹Reagan et al. (2017) Intl. Geol. Rev., doi:10.1080/00206814.2016.1276482.

²Marschall and Schumacher (2012) Nature Geosci., doi: 10.1038/NCEO1634.

Keywords: Subduction initiation, Isotope geochemistry, basalt, boninite, Ogasawara

Petrogenesis of Low-Si Boninites Drilled from IBM Fore-arc by IODP Expedition352: implications from LA-ICP-MS study

*柵山 徹也¹、木村 純一⁴、田村 芳彦⁴、高澤 栄一²、高橋 俊郎²、Expedition 352 Scientists IODP³
 *Tetsuya Sakuyama¹, Jun-Ichi Kimura⁴, Yoshihiko Tamura⁴, Eiichi TAKAZAWA², Toshiro Takahashi², IODP Expedition 352 Scientists³

1. 大阪市立大学大学院理学研究科、2. 新潟大学理学部地質科学科、3. IODP、4. 海洋研究開発機構
 1. Faculty of Science, Osaka City University, 2. Department of Geology, Niigata University, 3. IODP, 4. JAMSTEC

We discuss petrogenesis of Low-Si boninites with high Cr content (500-1500 ppm) obtained from IODP Holes U1439C and U1442A in terms of whole-rock major and trace element compositions, trace element compositions of minerals, and Pb isotopic compositions ($^{208}\text{Pb}/^{206}\text{Pb}$ and $^{207}\text{Pb}/^{206}\text{Pb}$) of groundmass. We conducted electron probe micro-analyzer (EPMA) and laser-ablation multiple collector inductively coupled plasma mass spectrometry (LA-MC-ICP-MS) analyses as well as X-ray fluorescence spectrometer (XRF) and ICP-MS analyses on low-Si boninites and FABs in order to reveal the petrogenesis of these rocks.

Many low-Si boninites with high Cr content (500-1500 ppm) contain reversely-zoned olivine and clinopyroxene phenocrysts: Fo# [$[\text{Mg}/(\text{Mg}+\text{Fe}^{2+})]_{\text{mol}}$] of olivine varies from ~87 at core to >90 at rim, and Mg# [$[\text{Mg}/(\text{Mg}+\text{Fe}^{2+})]_{\text{mol}}$] of clinopyroxene varies from < 83 at core to >89 at rim. Measured $^{207}\text{Pb}/^{206}\text{Pb}$ (0.823–0.842) and $^{208}\text{Pb}/^{206}\text{Pb}$ (2.02–2.06) of boninites' groundmass from Expedition 352 are similar to the reported $^{207}\text{Pb}/^{206}\text{Pb}$ (0.814–0.839) and $^{208}\text{Pb}/^{206}\text{Pb}$ (2.021–2.063) of boninites from Izu-Bonin and Mariana (IBM) fore-arcs. Low-Si boninites with intermediate Cr content (500-800 ppm) show higher $^{207}\text{Pb}/^{206}\text{Pb}$ (0.828–0.842) and $^{208}\text{Pb}/^{206}\text{Pb}$ (2.035–2.063) than those with the highest Cr content (~1400 ppm) ($^{207}\text{Pb}/^{206}\text{Pb}$ ~ 0.827–0.831 and $^{208}\text{Pb}/^{206}\text{Pb}$ ~ 2.042) but lower than the reported $^{207}\text{Pb}/^{206}\text{Pb}$ (0.830–0.856) and $^{208}\text{Pb}/^{206}\text{Pb}$ (2.055–2.097) of FABs from IBM.

Low-Si boninites with high Cr content show positive correlation between Zr/Ti and Cr content, which is hard to reproduce simply by differences in the degree of melting, fractional crystallization or crystal accumulation. One plausible mechanism to reproduce the geochemical variations observed for low-Si boninites with high Cr content is mixing between low-Si boninite with the highest Cr content and FAB. The intermediate $^{207}\text{Pb}/^{206}\text{Pb}$ and $^{208}\text{Pb}/^{206}\text{Pb}$ of low-Si boninites with intermediate Cr content as well as the presence of reversely-zoned clinopyroxene phenocrysts support mixing model, which can also reproduce variations in published whole-rock trace elements and isotope compositions of boninites and FABs.

キーワード：ボニナイト、前弧玄武岩、伊豆小笠原弧

Keywords: boninite, forearc basalt, Izu-Bonin-Mariana

古第三紀における伊豆・小笠原・マリアナ弧の火山活動の変遷：メルト包有物の組成データの統計解析からの制約

Evolution of the proto-Izu-Bonin-Mariana arc volcanism: Constraints from statistical analysis on geochemical data of melt inclusions

*浜田 盛久¹、岩森 光¹、Brandl Philipp²、李 賀³、Savov Ivan⁴

*Morihiisa Hamada¹, Hikaru Iwamori¹, Philipp A. Brandl², He Li³, Ivan P. Savov⁴

1. 国立研究開発法人海洋研究開発機構地球内部物質循環研究分野、2. GEOMARヘルムホルツ海洋研究センター、3. 中国科学院広州地球化学研究所、4. リーズ大学

1. Department of Solid Earth Geochemistry, Japan Agency for Marine-Earth Science and Technology, 2. GEOMAR Helmholtz Centre for Ocean Research Kiel, 3. Guangzhou Institute of Geochemistry, Chinese Academy of Sciences, 4. The University of Leeds

国際深海掘削科学計画第351次研究航海（2014年6～7月に実施）では、伊豆－小笠原－マリアナ（IBM）弧の古島弧である九州パラオ海嶺の西側に位置する奄美三角海盆海域・U1438地点の掘削が行われた。この掘削点からは、5200万年前に太平洋プレートがフィリピン海プレートの下に沈み込みを始め、島弧火成活動が開始した後の、古第三紀におけるIBM弧の火砕性堆積物がコア試料として得られた。IBM弧の火成活動の時間発展を明らかにするため、我々は4000万年前から3000万年前までの古第三紀のIBM弧の火成活動の時間発展を記録しているユニットIII（厚さ1046.4mの堆積物層）から得られたメルト包有物の主要元素および揮発性元素（ClおよびS）を、電子線プローブマイクロアナライザー（EPMA）を用いて分析した。メルト包有物は単斜輝石または斜長石に包有されており、その化学組成は低カリウム系列から高カリウム系列の玄武岩から流紋岩まで幅広く多様である。これらのメルト包有物は火砕性堆積物コアから採取されているため、九州パラオ海嶺上の複数の火山に由来する噴出物の混合物である可能性が考えられる。古第三紀のIBM弧の火成活動史をより高い解像度で理解するため、我々は、メルト包有物の化学組成データに対して統計解析（K-meansクラスター分析）を行った。

クラスター分析の結果、メルト包有物はクラスター1から6までの6つのクラスターに分類された。そのうち4つのクラスター（クラスター1, 3, 4, 5）は玄武岩～安山岩質のメルト包有物である。これら4つのクラスターは、それぞれの未分化メルトが $f_{O_2} = \text{NNO}+1$ の条件下で結晶分化作用をしたと説明することができる。ただし、それぞれのクラスターの化学組成のバリエーションを完全に説明するためには、部分熔融度が異なるいくつかの未分化メルトが存在し、且つメルト中の含水量にバリエーションが必要であることも分かった。クラスター1のメルト包有物（中カリウム系列、ソレイト系列の玄武岩～安山岩質メルト包有物）と、クラスター5のメルト包有物（カルクアルカリ系列、高マグネシウム安山岩質のメルト包有物）は独立している。クラスター5のメルト包有物は、枯渇したマントルが部分熔融して生じた初生メルトが結晶分化した一連のメルトであると考えられ、3700万年前より古い時代にのみ出現する。一方、クラスター1のメルト包有物は、肥沃なマントルが部分熔融した初生メルトが結晶分化した一連のメルトであると考えられる。クラスター1はユニットIIIの下部（4000万年前）から上部（3000万年前）まで出現するが、主として、クラスター5が出現しなくなる3700万年前よりも新しい時代に出現する。クラスター3とクラスター4のメルト包有物は、ユニットIIIの下部（4000万年前）から上部（3000万年前）まで一貫して出現する。クラスター3のメルト包有物は、硫黄濃度が比較的高いことで特徴づけられ、硫黄に富むスラブ起源流体によって交代作用を受けたマントルが部分熔融した初生メルトが結晶分化することによって導かれたと考えられる。クラスター4のメルト包有物は、塩素濃度とカリウム濃度が比較的高いことで特徴づけられ、塩素やカリウムに富むスラブ起源流体によって交代作用を受けたマントルが部分熔融して生じた初生メルトが結晶分化することによって導かれたと考えられる。すなわち、上述した4つのクラスター（クラスター1, 3, 4, 5）のメルト包有物は、マントルウェッジの不均質性を反映していると考えられる。4つのクラスター（クラス

ター1, 3, 4, 5) 以外に2つのクラスターが存在する。クラスター2は、塩素濃度が異常に高い(最大で1 wt.%) ことで特徴づけられ、クラスター1のメルトが同化作用によって海底熱水中の塩素を取り込んだと考えられる。クラスター6のメルト包有物は、珪長質(デイサイト~流紋岩質)の組成で特徴づけられる。

岩石学・地球化学においてしばしば用いられる2次元のグラフを用いる手法では、メルト包有物のデータをこのように6つに分類することは不可能である。従来は識別できなかった組成トレンドやグループといったデータ構造が識別可能となるという、統計解析の手法の有用性が示された。

キーワード：伊豆・小笠原・マリアナ弧、奄美三角海盆、九州パラオ海嶺、メルト包有物、統計解析

Keywords: Izu-Bonin-Mariana volcanic arc, Amami Sankaku Basin, Kyushu-Palau ridge, Melt inclusion, Statistical analysis

Volcanic Ashes Recovered by IODP Expedition 350 Site U1436 in the Izu Arc: A Prologue of Submarine Caldera Formation?

*田村 芳彦¹、Schindlbeck Julie²、Jutzeler Martin³、Nichols Alexander⁴、DeBari Susan⁵、Andrews Graham⁶、Gill James⁷、Busby Cathy⁸、Blum Peter⁹、木戸 ゆかり¹⁰

*Yoshihiko Tamura¹, Julie Christin Schindlbeck², Martin Jutzeler³, Alexander Nichols⁴, Susan DeBari⁵, Graham D. M. Andrews⁶, James Gill⁷, Cathy Busby⁸, Peter Blum⁹, Yukari Kido¹⁰

1. 海洋研究開発機構 海洋掘削科学研究開発センター、2. ゲオマール海洋研究センター、3. タスマニア大学、4. カンタベリー大学、5. ウェスタンワシントン大学、6. ウェストバージニア大学、7. カリフォルニア大学サンタクルズ校、8. カリフォルニア大学デービス校、9. IODP、10. 海洋研究開発機構 CDEX

1. ODS, JAMSTEC, 2. GEOMAR Helmholtz Centre for Ocean Research, 3. School of Physical Sciences and Centre of Excellence in Ore Deposits (CODES), University of Tasmania, 4. Department of Geological Sciences, University of Canterbury, 5. Department of Geology, Western Washington University, 6. Department of Geology & Geography, West Virginia University, 7. University of California, Santa Cruz, 8. University of California, Davis, 9. IODP, Texas A & M University, 10. CDEX, JAMSTEC

International Ocean Discovery Program (IODP) Site U1436 (32°23.88' N, 140°21.93' E) lies 1,776 m below sea level and about 60 km east of the arc front volcano Aogashima, and was drilled as a geotechnical survey for proposed D/V *Chikyu* drilling at Site IBM-4. Coring at Site U1436 recovered a 132 m record of Quaternary explosive volcanism in the Izu arc. Because the prevailing wind blows from west to east across the Izu arc, the forearc is a repository of medial and distal aerially dispersed ashes and tuffs from Izu and Japan, as well as eastward flowing density currents from the frontal arc. Effusive eruptive products (e.g., lavas) are better preserved on the frontal arc islands, while deep marine depocenters form a complement, by chiefly preserving products from explosive eruptions. However, which volcano or volcanoes did these ashes erupt from? Could the ash record at Site U1436 be nothing but a haphazard collection of Izu arc volcanoes?

There are several interesting features of Site U1436 cores.

- 1) The biostratigraphic datums indicate a possible hiatus between 66 mbsf and 74 mbsf. The 66 m of the cores above the hiatus provides a nearly complete record of the Late Pleistocene (< 0.91 Ma). They show higher linear sedimentation rates (LSRs) and mass accumulation rates (MARs) than the lower parts below the hiatus (> 1.5 Ma).
- 2) Ash fallout and volcanoclastic flow deposits (~150 intervals) are present at Site U1436. The majority of tephra fall layers at Site U1436 are from volcanoes of the Izu volcanic front as well as from mainland Japan (Schindlbeck et al., pers. comm.).
- 3) Site U1436 is bathymetrically isolated from all Quaternary volcanic front volcanoes through submarine troughs and edifices except for Higashi Aogashima caldera. Therefore, Higashi Aogashima caldera is the only likely source for eruption-fed density currents at Site U1436
- 4) One distinctive interval of black ash (~55 mbsf, 0.75 Ma) is comprised of glassy shards of basaltic andesite (~55 wt% SiO₂) that comprise an extension of the dominantly basaltic compositional array of Aogashima volcano (major and trace elements). The evolution of magma chemistry of this black glassy ash and its possible Higashi Aogashima caldera origin are consistent with the hypothesis of submarine rhyolite caldera formation in the Izu arc by Tamura et al. (2009) as follows. Rhyolite calderas have no mantle roots beneath the crust. Instead, Tamura et al. (2009) proposed that dikes from the adjacent basalt volcanoes provide the heat source to partially melt the surrounding crust to produce rhyolite magmas. Thus, dikes from Aogashima volcano and their fractional crystallization may have resulted in andesitic magmas and transferred latent heat to the crust. They could be the heat source that produced the rhyolites and

resulting Higashi Aogashima caldera.

Tamura, Gill, Tollstrup et al. (2009). Silicic Magmas in the Izu-Bonin Oceanic Arc and Implications for Crustal Evolution. *Journal of Petrology* **50**, 685-723.

キーワード：東青ヶ島カルデラ、伊豆弧、流紋岩、海底カルデラ、IODP

Keywords: Higashi Aogashima Caldera, Izu arc, rhyolite, submarine caldera, IODP

Toward achieving the “100% recovery rate” of information in deep, hard rock drill sites using physical properties logging

*Masako Tominaga¹, Saneatsu Saito²

1. Texas A&M University College Station, 2. Japan Agency for Marine-Earth Science and Technology

Borehole informatics has been a powerful approach to investigate drilled hard rock formation especially where core recovery operations are strategically not planned and/or core recovery rates can be suffered from various environmental and operational reasons. Establishing a reliable downhole lithostratigraphy model at a drilled site is one of the most basic missions to be accomplished for our understanding of the subsurface architecture. Throughout the history of scientific ocean drilling, it has been one of the biggest challenges, however, to draw such a reliable downhole stratigraphy model of any drilled igneous section because core recovery rates are typically very low. Any conventional shipboard volcanostratigraphy includes a great degree of uncertainty due to (a) biased recovery of rock, fractures, and alteration types (e.g., loss of highly altered breccia materials and fracture fillings), (b) uncertainty of the in situ location of recovered core pieces, and (c) inconsistent core description criteria onboard when developed from several cruises. Consequently, critical elements for the understanding of evolution of the oceanic crust, such as alteration processes, changes in physical properties, and crustal accretion system may lead to mistaken conclusions. As an important alternative to the piecemeal shipboard lithostratigraphy, we introduce a complete, less-subjective volcanostratigraphy model by integrating wire-line logging and recovered core data using an example from Ocean Drilling Program (ODP) Hole 1256D, the first drilled hole that penetrated through the entire upper oceanic crust into the top of gabbro sequence, located at the super-fast spreading 15 Ma crust at Cocos Plate. From the Hole 1256D logging data, quasi-2D resistivity contrast images of borehole wall, so-called electrofacies acquired by multiple Formation MicroScanner (FMS) runs, were found particularly useful in deciphering the detailed crustal architecture with unprecedented resolution (i.e. centimeter scale). A volcanostratigraphy model was built by translating these FMS electrofacies into end-member lava flow types observed in the modern day EPR, shedding new light on crustal construction processes. Any future hard rock drilling effort, including proposed arc crust drilling (IBM), continental rifted margin drilling (Lord Howe Rise), and core-mantle boundary drilling (“MoHole”) will evidently foresee challenges in recovering continuous core materials; nevertheless, the “100% recovery rate” of information from these hard rock drilled sites can be achievable by effective physical properties logging.

Keywords: Crust-Mantle Drilling, Borehole Informatics, Well logging

P-wave velocity reduction toward to the Moho in the oceanic lower crust? : Implications from lithological variation of gabbroic core samples

*阿部 なつ江¹

*Natsue Abe¹

1. 国立研究開発法人海洋研究開発機構海洋掘削科学研究開発センター

1. R&D Center for Ocean Drilling Science Japan Agency for Marine-Earth Science and Technology

Variety of gabbroic samples were taken from the Atlantic Ocean (ODP Legs 153 & 209, IODP Exps. 304&305), the Indian Ocean (the Atlantis Bank: ODP Legs 118 & 176) and the Pacific Ocean (Hess Deep: IODP Exp. 345). Those gabbroic core samples were originated from the upper part and lower part of the oceanic crust.

IODP Exp. 360 Phase I of the "Nature of the Lower Crust and Moho at Slower-Spreading Ridges" (SloMo) project, a Multi-Leg Drilling Project, drilled into the lower crustal gabbroic rocks at Atlantis Bank, and penetrated from the ocean floor to 789.7 mbsf. The cored interval is 742.7m and total recovered core length 469.65 m (63.2% recovery). Olivine gabbro is the dominant lithology of the core samples, followed by gabbro, oxide gabbro, and oxide-bearing gabbro. Lithological variation is small in the core samples. In order to understand the petrophysics of the site, we measured physical properties on whole rounds, section halves, and discrete samples. We also achieved three runs of wire-line logging (Triple-combo, sonic/FMS, and UBI). The data suggests that those gabbroic samples show high Vp values (6.0 ~ 7.5km/s) regardless the lithology.

On the other hand, Hole U1309D at the Atlantis Massif at 30 degree N, Mid-Atlantic Ridge was penetrated 1415 mbsf during IODP Exp. 304 and 305 (Blackman et al., 2006). Variable types of gabbroic cores were sampled with high recovery (74.8%). They are mainly gabbro (Cpx + Pl), olivine gabbro, gabbro-norite, oxide gabbro, troctolite, olivine-rich troctolite, felsic veins and diabase. The most samples include olivine even gabbro in a narrow sense. The modal composition of olivine varies from less than 5 vol% in gabbro, gabbro-norite and oxide gabbro to 85 vol% in the olivine-rich troctolite. On-board measurement of the compression wave velocity of those samples from Hole U1309D shows a slightly slower range (5.0 ~ 6.7 km/s) than that (6.0 ~ 7.0km/s) of the typical gabbroic rocks.

The total alteration intensity of the samples has a negative correlation with the P wave velocity, and a positive correlation with the porosity in general. Except for the olivine-rich troctolite, the olivine mode of the samples, however, more affects to the porosity and P wave velocity as same as the serpentinization of peridotite samples. This is because that olivine is easier to be altered (serpentinized) compared to other phases in gabbroic rocks. The connectivity of the olivine grains in the samples also influence to reduce the velocity. The result of our study implies the possibility of the reversal velocity structure in the oceanic lower crust if it is olivine-rich and is sufficiently serpentinized, although the pressure effects should be considered.

キーワード : P波速度、斑れい岩、下部地殻、IODP、モホ面、かんらん石

Keywords: P-wave velocity, Gabbro, Lower crust, IODP, Moho, olivine

The Lateral Variability of the Lower Ocean Crust at an Ultraslow Spreading Ridge: Evidence for Dynamic Accretion

*Henry JB Dick¹, Christopher J. MacLeod²

1. Woods Hole Oceanographic Institution, 2. Cardiff University

During Phase I of the SloMo Project, ODP Hole U1473A was drilled 809.4 m into a 700-m deep wave-cut platform at Atlantis Bank on the SW Indian Ridge. This constitutes the eroded top of an oceanic core complex where massive gabbro was emplaced into the footwall of a single detachment fault for 3.74 Myr, with total slip 38.9 km. It was then uplifted to its present position flanking the 6,100 m deep 199-km Atlantis II Transform. The gabbros are back-tilted $\sim 20^\circ$ S, while a sub-horizontal ~ 30 -km long mantle peridotite-gabbro contact lies along the transform wall at ~ 4200 m depth ~ 11.5 km west of Hole U1473A. Hole U1473A is 1.4 km north of 158-m deep Hole 1105A and 2.2 km NNE of 1508-m deep Hole 735B. Together these holes document the lateral continuity of the lower ocean crust at ultraslow rates (14 mm/yr.), and compare it to 1400-m Hole U1309D in the Atlantis Massif MAR core complex (24 mm/yr.) flanking the 63-km Atlantis Transform. The three Atlantis Bank holes are very similar, consisting of a complex series of intercalated oxide-rich gabbros and olivine gabbros. Several dikes crosscutting the gabbro sections show that they passed through the dike-gabbro transition after crystallizing and cooling deeper in the crust. They all show extensive high-temperature crystal-plastic deformation predating dike intrusion. A small amount of troctolite was recovered only in Hole 735B. By contrast, gabbro, rather than olivine gabbro was the dominant lithology in Hole U1309D, with intercalations of troctolite and mantle peridotite, and subordinate oxide gabbro. Oxide gabbro is often associated with crystal-plastic deformation. While these are concentrated in the upper 1/3 of Hole 735B, they are more uniformly distributed in Hole U1309D. While one section cannot be traced directly to the other at Atlantis Bank, it appears that they can be correlated based on chemical and structural similarities, with the 1105A and 1473A sections lying some hundreds of meters deeper structurally than Hole 735B, consistent with erosion on the platform. All these sections represent sequential emplacement of small gabbro bodies in an active dynamic environment where the lower crust could support a shear stress, and simultaneous upward compaction of late melt through the section. Locally, shear zones related to the uplift of the section into the partially molten gabbro localized late permeable melt flow, hybridizing the olivine gabbro to high evolved oxide gabbro. These simultaneous processes created a stratigraphy of enormous complexity unlike any intrusion seen on land.

Keywords: Gabbro, dynamic accretion, Ocean Drilling

Geochemical and petrological interactions between felsic rocks and the host gabbros in the Oceanic Plate: An example from IODP Hole U1473A

*Du Khac Nguyen¹, Tomoaki Morishita¹, Yusuke Soda¹, Biswajit Ghosh², Yumiko Harigane³, Christopher J. MacLeod⁴, Peter Blum⁵, Henry J.B Dick⁶

1. School of Natural System, College of Science and Technology, Kanazawa University, Japan, 2. Department of Geology, University of Calcutta, India, 3. Institute of Geology and Geoinformation, Geological Survey of Japan, 4. School of Earth and Ocean Sciences, Cardiff University, Wales, 5. International Ocean Discovery Program, Texas A&M University, USA, 6. Department of Geology and Geophysics, Woods Hole Oceanographic Institution, USA

IODP-Hole U1473A was drilled on the summit of Atlantis Bank, Southwest Indian Ridge during Expedition 360 brought back for us a chance to get more information about the lower crust at the ultra-slow spreading ridges. Felsic veins rich in plagioclase, are common, though locally concentrated in the core. The veins occur as planar or branched networks with a variety of sizes in the gabbroic rocks. They are generally interpreted as formed from evolved melts in the late stage of crystallization of the gabbros. It has been recently accepted that reaction between the gabbroic mineral assemblage in the earlier stage of crystallization and migrating melts is an important process in melt evolution beneath mid-ocean ridge (Lissenberg et al., 2008, 2013). In order to expand our knowledge of nature of the lower crustal section of slow-spread ocean crust, we will present modes of interactions between felsic veins and the host gabbros. Based on X-ray mapping combined with EPMA analyses, we classified the felsic veins into three types following the nomenclature of Le Maitre et al. (2002): Granodiorite, quartz diorite and quartz monzodiorite. The veins contain mainly plagioclase with lesser amounts of amphibole, quartz; Fe-Ti oxides. Accessory minerals consist of apatite and zircon, \pm biotite. Secondary minerals such as actinolite-tremolite, chlorite, are commonly present.

Plagioclase is the most abundant mineral in the veins, and has a large size range. Most crystals are subhedral or euhedral with normal zoning. Most grains have cores of oligoclase-andesine and rims of albite-oligoclase with the composition ranging from An₄ - An₃₈. Myrmekitic texture of albite and quartz occurs in some felsic veins. Amphibole is the second most abundant mineral in the felsic veins with 2 main categories: pale-green amphiboles and brownish-dark brown amphiboles. On the IMA classification scheme (Hawthorne et al, 2012; Locock, 2013), the amphiboles range from tremolite, to magnesio-hornblende and pargasite. Some quartz occurs interstitially between plagioclase crystals indicating that some might have crystallized from fluids rather than silicate melt. Zircon and apatite are present in all our 5 vein samples with different levels of concentration.

We find that the Hole U1473A felsic veins share a lot of similarities to those described by Robinson et al (2002) in ODP Hole 735B. We propose that the occurrences of these intrusions play a key role in the alteration processes of the host minerals and they could have some different origins as follows. The veins morphology and the myrmekitic textures as well as the abundance of zircon, apatite in all the felsic vein samples clearly demonstrates that they formed from the late magmatic melts. On the other hand, the continuous texture gradation between a felsic vein and the host olivine gabbro in one sample suggested a pseudomorphic replacement process in the lower crust.

Keywords: Atlantis Bank, gabbros, felsic veins, melts, fluids, replacements

Genesis of EPR lower crust: Petrographical and chemical evidence for mixing between MORB type and OIB type melts

*Sayantani Chatterjee¹, Marie Python¹, Marguerite Godard², Norikatsu Akizawa³

1. Hokkaido University Department of Natural History Science Division of Earth and Planetary Systems Sciences, 2. University of Montpellier, 3. Kyoto university

IODP Expedition 345 aimed to drill lower crust gabbros at Hess deep rift (East Pacific Rise, 2°14' N-101°30' W), which is located at the junction between EPR and the Cocos, Nazca and Ridge. Lower oceanic gabbros were sampled on a about ~200 m wide bench located on the intrarift's southern slope between 4675 and 4850 m below sea level, and total of 11 holes (A to P) were drilled among which two reached a depth over 100 m below seafloor (Holes 1415J and 1415P) (IODP Expedition 345 Scientific Report, 2013). Primitive troctolites and olivine-rich gabbros were the main lithologies recovered from these two holes. Shipboard data showed a high Mg# whole rock chemistry in concordance with their primitive nature.

We studied about 70 samples from Holes J and P for their petrography and mineral chemistry. The olivine gabbros show an overall cumulate texture with ophitic to subophitic domain consisting of large clinopyroxenes enclosing plagioclase chadacrysts. Non-ophitic clinopyroxenes are in association with orthopyroxene in an interfingered relationship. Olivine is subhedral to subrounded and plagioclase appear as subhedral laths. Overall texture points to a crystallisation order starting with olivine and plagioclase, and finishing with clinopyroxene in association with more or less orthopyroxene as expected for a crystallising MORB. Mineral chemistry show primitive characteristics with olivine forsterite content above 85% and clinopyroxene Mg# higher than 86% for all samples. Mg# in Cpx and the forsterite content in olivine show relatively narrow downhole variation ranges (from 86 to 89% for Cpx and 85 to 90% for olivine) together with a large scatter in minor elements (Ti, Al, Cr, Ni, Mn), suggesting that, at a global scale, only a moderate degree of differentiation occurred during the gabbro formation process. Chemical zoning observed in the ophitic cliopyroxenes show that the crystallisation process may be locally dominated by small scale differentiation.

Minor and trace elements contents in olivine, Cpx and plagioclase show a great variability scattered over the MORB chemical range. Calculated compositions for liquids in equilibrium with all minerals using both minor and trace elements are consistently between the EPR MORB and the Galapagos basalts chemical domains. This demonstrates that magmatic contamination from the Galapagos hotspot is significant in the Hess Deep lower crust. Interestingly, a weak degree of contamination from the Hawaii hot spot was detected in EPR basaltic glasses (Niu et al., 1999) but Hess Deep basalts seems to be of purely MORB nature (Batiza et al, 1992) without any chemical evidence of Galapagos influence. This shows that either lower gabbros, and especially Cpx in these rocks as this mineral represent the main incompatible element reservoir, may act as a chemical filter by preventing contaminating primitive melts from the Galapagos hot spot to be expelled out of lower levels magmatic mushed.

References:

- Batiza, R., & Niu, Y. Petrology and magma chamber processes at the East Pacific Rise ~ 9 30' N. *J. geophys. Res.* 97(6), 779-776, (1992).
- Gillis, K. M. et al., primitive lower gabbros from fast-spreading lower oceanic crust. *Nature.* 268, 154-156 (2013).

Gillis, K. M., Snow, J. E., et al., Exploring the plutonic crust at fast-spreading ridge: new drilling at Hess Deep, *Preliminary Report Expedition 345*, (2013).

Niu, Y., & Collerson, K. D. Origin of enriched-type mid ocean ridge basalt at ridges far from mantle plumes: The east Pacific Rise at 11°22' N. *J. geophys. Res.*, 104, 7067-7087, (1999).

Keywords: Hess Deep, IODP Expedition 345, Gabbros, Magma Mixing, MORB, OIB

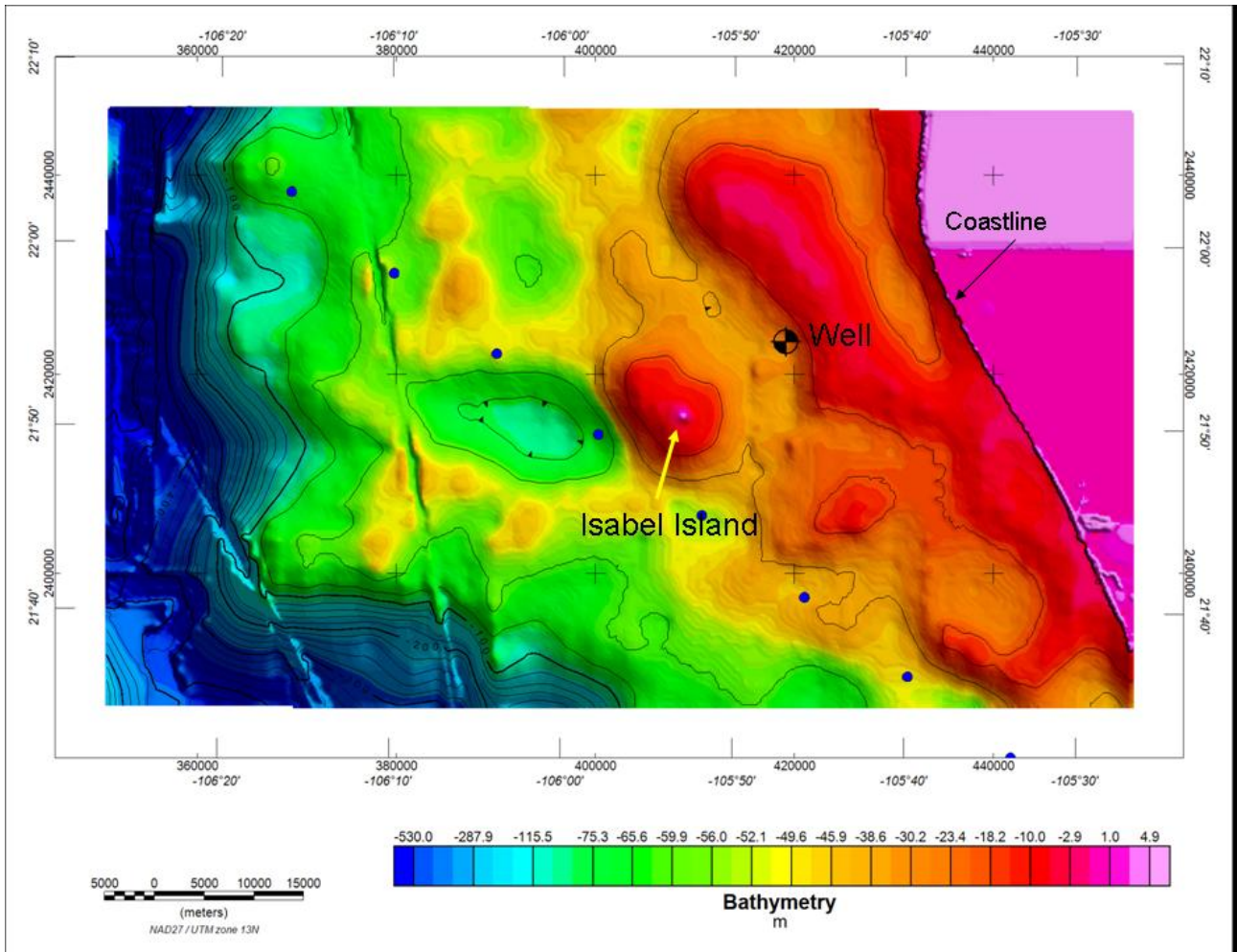
ISLA ISABEL, MEXICO: A THIN CRUST UNDER A SHALLOW CONTINENTAL PLATFORM

*Román Alvarez¹, Fernando Corbo Camargo², Vsevolod Yutsis³

1. National Autonomous University of Mexico, 2. Centro de Geociencias, UNAM, 3. Instituto Potosino de Investigación Científica y Tecnológica

The crust at Isabel Island in the Mexican Pacific continental platform is only 17 km thick; this thickness has been determined by seismic studies, and more recently corroborated by a magnetotelluric one. The thin crust is the result of rifting and extensional tectonism induced by the separation of Baja California Peninsula from mainland Mexico. The island shows Plio-Pleistocene volcanic activity, including the formation of maars and the presence of mantle xenoliths. Alkali basalts transported peridotite xenoliths to the island's surface. Furthermore, pressure estimates for the Isabel xenoliths indicate that they equilibrated at relatively low pressures (5.9–15.5 kb), supporting the occurrence of shallow crustal processes. Gravity and magnetic models show that the island represents the emerged portion (0.03 km³) of a larger laccolith (12 x 8 km) where apparently successive magma intrusions have deformed the shallow (100 m) continental platform where it is located. A nearby exploration well distant 8 km from the island reached 3157 mbsl; from 1400 to 3157 m-depth the recovered nuclei consisted of oceanic crust, where the deepest 250 m were of dolerite composition. At the bottom of the well a temperature of 231°C was reported, yielding a geothermal gradient of 73 °C/km, one of the largest in the world, indicating an anomalously high heat flux in the area. Since dolerite dikes often occur in swarms it is likely that they are present throughout the area. Nearby gravity and magnetic anomalies of similar characteristics to those of Isabel Island support the probable presence of additional intrusive bodies in this region. A thin crust with high heat-flow, combined with a shallow continental platform represents an opportunity area to carry out hard-rock drilling projects.

Keywords: Isabel Island, Mexico, Thin crust, Laccolith



Pre-existing crust and a mantle anomaly in the tectonic evolution of the South China Sea

*Maria Luisa Tejada¹, Paterno Castillo², Xiaolong Huang³, Ryoko Senda¹

1. Department of Solid Earth Geochemistry, Japan Agency for Marine-Earth Science and Technology, 2. Scripps Institution of Oceanography University of California San Diego, 3. Guangzhou Institute of Geochemistry, Chinese Academy of Sciences

One of the main objectives of International Ocean Discovery Program (IODP) Expedition 349 is to determine the spreading history and tectonic development of the South China Sea (SCS) and the mechanisms responsible for the initiation of spreading. Two of the suggested mechanisms involved 1) back-arc basin opening as a result of slab pull from subduction of pre-existing proto-SCS crust and 2) the role of an upwelling mantle anomaly. Cores of oceanic crust were successfully recovered, close to the fossil spreading centers at the East Subbasin (U1431) and at the Southwest Subbasin (U1433B and U1434A). Isotopes and geochemical data of representative samples from Site U1431E, U1433B, and U1434 are used to determine the different source inputs during the last stages of spreading in the SCS. The Os-Nd isotope data indicate three isotopically distinct magma types, representing at least three sources. The most radiogenic Os isotopic compositions occur in Site U1434 basalts and may be attributed to the influence of continental lower crust input toward the end of spreading in the Southwest Subbasin. In contrast, the earlier stage of spreading in the Southwest Subbasin, at Site U1433B, produced basalts that show the least radiogenic Os, combined with radiogenic Nd isotopic compositions, which could represent a normal ridge mantle source with altered oceanic crust input. Spreading at Site U1431E may have also occurred in two stages, with an earlier stage dominated by mixed sources involving enriched mid-ocean basalt (MORB)-type mantle with altered normal oceanic crust input, which later evolved into enriched MORB-type magmatism with ocean island basalt-type source input. The oceanic basement composition at both Site U1433 and Site U1431 indicates a similar enriched MORB-type mantle source but requires an altered MORB crust assimilated, suggesting incorporation of old oceanic crustal component. Alternatively, the Os-Nd isotope data could indicate that the upwelling magma at both sites interacted with old pre-existing crust, possibly from a previous back-arc spreading phase. Our results highlight evidence for pre-existing proto-SCS and the increasing role of a melting anomaly during the latest stages of rifting, leading to seamount volcanism for another 3-10 m.y., before magmatic activity finally ceased.

Keywords: South China Sea, melting anomaly, proto-South China Sea crust

Parameterized lattice strain model for HFSE partitioning between amphibole and silicate melt with application to arc magma evolution

*Kei Shimizu¹, Yan Liang², Erik H Hauri¹

1. Department of Terrestrial Magnetism, Carnegie Institution for Science, 2. Department of Earth, Environmental and Planetary Sciences, Brown University

The role of amphibole fractional crystallization in generating differentiation trends in arc magmas [1, 2] can be better understood by constraining the parameters responsible for the large range in experimentally determined trace element partition coefficients between amphibole and melt. In this study, we used published experimental high field strength element (HFSE) partitioning data between amphibole and silicate melt, the lattice strain model [3], and non-linear least squares regression method to parameterize key parameters in the lattice strain model (D_0 , r_0 , and E) for amphibole as a function of pressure, temperature, and both mineral and melt compositions. In our tetravalent HFSE (Zr, Hf, Ti) partitioning model, D_0 negatively correlates with Ti content in the melt, r_0 negatively correlates with Ti content in the amphibole, and E positively correlates with r_0 . The pentavalent HFSE (Nb, Ta) partition coefficients were empirically modeled as a function of amphibole composition and D_{HF} . Application of our HFSE partitioning models and our previous REE partitioning model [4] to experimental data simulating fractional crystallization of arc magmas [5] suggests that (1) HFSE and REE partition coefficients between amphibole and melt can vary by a factor of three and ten respectively during arc magma fractional crystallization due to variation in the amphibole and melt compositions, (2) amphibole fractional crystallization causes significant fractionation within and between HFSEs and REEs (e.g. it increases Zr/Hf and Zr/Nd ratios, and decreases Dy/Yb and Dy/Dy* ratios) in arc magmas, and finally (3) it plays a key role in buffering the HFSE and REE concentrations in arc magmas.

References

- [1] Davidson et al. (2007) *Geology* 35(9), 787-790.
- [2] Davidson et al. (2013) *J. Petrol.* 54(3), 525-537.
- [3] Blundy & Wood (1994) *Nature* 372, 452-454.
- [4] Shimizu et al., (2017) *Am. Mineral.* Submitted.
- [5] Nandedkar et al. (2014) *CMP* 167(6), 1-27.

Keywords: amphibole, HFSE and REE partitioning, arc magma evolution