

Spatial variations of stress drop within individual sequences: implications for earthquake triggering

*xiaowei chen¹, Rachel Abercrombie², Colin Pennington¹

1. University of Oklahoma Norman Campus, 2. Boston University

Stress drop is an important parameter not only related to fundamentals in earthquake source physics, but also high frequency ground motions. The rapidly increased seismicity in central US poses significant challenges to earthquake hazard modeling. In this study, we carefully analyze several individual clusters in Oklahoma. For each cluster, we perform a sensitivity test to obtain the parameter ranges that provide most stable results using a stacking EGF approach. Then, we test two hypotheses to assess if there is any robust scaling relationship that extends from small to large magnitude, and the stability of spatial variability. Our results suggest that the large earthquakes consistently have higher stress drop, however, these is not a general scaling relationship. The higher stress drop tends to be related to structural heterogeneity, and the spatial variability of stress drop is stable regardless of large earthquakes. These observations suggest that robust mapping of stress drop distributions would be important for future hazard assessment. To further understand the characteristics of large earthquakes, we perform detailed individual EGF to obtain independent estimates of stress drop. This analysis also enables us to investigate the complexity, rupture directivity and rupture velocity of the best-recorded earthquakes. The results suggest that M3-4 events involve significant complexity, including multiple sub-events and strong directivity effects.

Keywords: Stress drop, induced seismicity, spatial variations

Toward the accurate stress drop estimation: improve corner frequency estimation with residual evaluation

*吉光 奈奈¹、ウィリアム エルスワース¹、グレゴリー ベローザ¹

*Nana Yoshimitsu¹, William Ellsworth¹, Gregory Beroza¹

1. スタンフォード大学

1. Stanford University

In the last several years, disposal of wastewater increases the seismic activity in central United States, especially in Oklahoma. The similarity or difference of the source characteristics between induced and natural earthquakes would contribute to hazard assessment. While stress drop is one of the most important source parameter, its difficulty of accurate estimation is well known. The common process in the stress drop estimation need to obtain the corner frequency by comparing the spectral ratio of the co-located event pair and the theoretical model. The accuracy of the corner frequency strongly affects the stress drop estimation since stress drop has proportional relationship to the cube of the corner frequency. In this study, we introduce the residual evaluation to the corner frequency estimation process and select good quality of records toward the better stress drop estimation of potentially induced earthquakes in Oklahoma.

We chose $M_w < 4.0$ events, and formed co-located (< 2 km) event clusters using the events occurred from 2016 March 1st to August 31 ($1.6 < M_L < 3.5$). The spectral ratios between the smaller events and the larger event in each cluster were calculated to remove path effects. Spectral ratios of the all components of 4 USGS and OGS stations which sampling frequency were 100 Hz were stacked. We analyzed 5.12 seconds from 2.5 times after the *S* wave arrival time after applied the band-pass filter of 0.1 to 40 Hz. Corner frequencies and moment ratio of each event pair were searched by the least square fitting with Brune model.

To improve the quality of the result, we evaluate the residual of the fitted curve to check the existence trade-off between two corner frequencies. We performed grid search between 1 to 30 Hz for a larger event and 1 to 60 Hz for a smaller event, and obtain the residuals (data minus model) on each data point at each trial. We displayed the residual map as a monochrome image, and calculate the distance between the smallest residual point and the centroid of the low residual region. We defined the event pairs which met the threshold distance of eight as a good quality data, and utilized them for the stress drop calculation. Comparing to the results without the selection, stress drops of selected data in the same cluster showed small variation in three clusters; thus, the quality control with residual would be effective. Estimated stress drops were 1-10 MPa for the smaller events and 6-63 MPa for the larger events. This result is consistent with the stress drop estimated in other regions of central United States as well as natural earthquakes.

キーワード：応力降下量、コーナー周波数

Keywords: Stress drop, Corner frequency

Precise Data Analyses toward the Update of Earthquake Source Spectral Model

*内出 崇彦¹、今西 和俊¹

*Takahiko Uchide¹, Kazutoshi Imanishi¹

1. 産業技術総合研究所 地質調査総合センター 活断層・火山研究部門

1. Geological Survey of Japan, National Institute of Advanced Industrial Science and Technology (AIST)

Earthquake source spectra are useful for simplifying, generalizing and differentiating properties of earthquakes rupture process. The standard model for source spectra is the ω^2 -model, in which the spectrum is flat at lower frequencies and decays as inversely proportional to the square of frequencies at high frequencies. The low and high frequency bands are bordered by the corner frequency, which is used for estimating stress drop under an assumption of a circular crack model.

One of the methods to improve the resolution of earthquake source spectra is the multiple spectral ratio analysis method [*Uchide and Imanishi, BSSA, 2016*], in which we employ multiple empirical Green's functions (EGF) to cancel the path and site effects as well as errors due to the differences in source locations and focal mechanisms of a target and EGF events. They applied this method to small earthquakes (M_w 3.2 –4.0) in Fukushima Hamadori and northern Ibaraki prefecture areas and found that the source spectra are well approximated by the ω^2 -model with bumps for some earthquakes, whereas for some other earthquakes the ω^2 -model fits very well. Then number of questions arise. Is this universal or only in this area? What is the physical meaning of bumps? What is the simple and inclusive model for earthquake source spectra?

In this study, we examined small inland earthquakes in Japan by the same method. The study area includes following areas: Kumamoto, where many of small earthquakes are preceded by the 2016 Kumamoto earthquake (M_w 7.0); Wakayama, where the seismicity is constantly active. The result indicated that the findings of *Uchide and Imanishi* [2016] are also the case in other areas.

The ω^2 -model with a bump around the corner frequency can be described as a double-corner-frequency model, while that with a bump at frequencies higher than the corner frequency can be that with a steeper slope at high frequencies. In the case of a double-corner-frequency model, the lower corner frequency will correspond to the source duration. Since the lower corner frequency will be generally smaller than the corner frequency in case of the single-corner-frequency model, such as the ω^2 -model, the double-corner-frequency model will give us a longer source duration and then lower stress drop.

Then what will the higher corner frequency represent? To answer this question, we need investigate the scaling relationship of two corner frequencies and the source process in detail, which are left as future work.

キーワード：震源スペクトル、スペクトル比解析

Keywords: Earthquake Source Spectra, Spectral Ratio Analysis

Stress drops and uncertainty resolution of repeating earthquakes at Parkfield

*Jiewen Zhang¹, Xiaowei Chen¹, Rachel E. Abercrombie²

1. Conocophillips School of Geology and Geophysics, University of Oklahoma, 2. Department of Earth and Environment, Boston University

Earthquake stress drop is an important parameter that is closely associated with ground motion predictions and earthquake source properties. Estimating stress drop from corner frequency is superficially easy but subject to significant uncertainty. In the Parkfield segment, Abercrombie [2014] analyzed three repeating clusters, and found that the sampling rate and source complexity significantly affect the reliability of source parameters. Specifically speaking, low sampling rate from the surface stations is insufficient to resolve corner frequencies for small earthquakes when the corner frequency is beyond the Nyquist frequency. In this study, we aim at resolving the uncertainty in source parameters systematically by comparing results from stacking methods that averaging over many event-station pairs, and results from individual pair analysis methods that look into details for each earthquake.

We begin with the double-difference catalog in Northern California, and an existed catalog with several clusters of repeating earthquakes. Then we search for suitable EGF events for each cluster. We are now studying two event groups, one from the proposed clusters with <20 repeating earthquakes, and the other selected ourselves manually which consists of 406 events with numerous distinct repeating clusters. For our own clusters, we set 0.99 as the cross-correlation threshold following a bandpass filter of 2~40 Hz for repeating pairs that will potentially be utilized for spectral analysis. Both event groups have wide magnitude range from 0 to 3, and we only include channels in different networks with high sampling rates (for borehole network sampling rate is 250 Hz and for surface network only 100 Hz channels). Low sampling rate channels are excluded so that it becomes feasible to apply a wider extension of bandpass filter. Then we will choose a cluster with a rational number of repeating events, apply both improved stacking analysis methods and individual pair analysis to the selected clusters, and systematically assess their consistency and difference. Updated results will be reported at the meeting.

Keywords: Stress drop, repeating earthquakes, uncertainty resolution, Sampling rates

Frictional and Radiated Energy for the Shallow Fault of the 2011 Tohoku-oki Earthquake

*James Mori¹

1. Earthquake Hazards Division, Disaster Prevention Research Institute, Kyoto University

Recent results from the Japan Trench Fast Drilling Project (JFAST) estimated the level of dynamic friction on the shallow portion of the fault that had the very large slip during the 2011 Tohoku-oki earthquake. During this Integrated Ocean Drilling Program (IODP) expedition, borehole samples were obtained from the plate boundary fault zone at 820 meters below the sea floor. Also, temperature monitoring in the borehole across the fault zone measured the level of frictional heat generated at the time of the earthquakes. From both high-speed laboratory experiments on the fault zone material (Ujiie et al., 2013) and the temperature observations across the fault zone (Fulton et al., 2013), the shear stress during the earthquake rupture was estimated to be about 0.6 MPa. This shear stress corresponds to a coefficient of friction of about 0.08 to 0.1.

Comparing these results with estimates of the radiated energy, which are derived from teleseismic body waves, shows that the radiated energy is larger than the frictional heat for the shallow portion of the fault. However, for the deeper portions of the fault, the frictional heat is larger. The shallow and deep portions of the megathrust have different proportions for the energy balance and, thus, different styles of faulting.

Keywords: Tohoku earthquake, radiated energy, frictional heat, JFAST

Moment Tensor Inversion of Earthquakes in Turkey and Surroundings by Using Site-Specific Velocity Models

*Musavver Didem Cambaz¹, Ahu Mutlu¹

1. Bogazici University Kandilli Observatory and Earthquake Research Institute

Turkey and its surrounding regions are tectonically active and have high-seismicity rates. The seismicity in the region is observed by the national networks of the Kandilli Observatory and Earthquake Research Institute, KOERI, and the Disaster and Emergency Management Presidency Earthquake Department, AFAD. The quality and quantity of seismic stations improved significantly after the 17 August 1999 Mw 7.4 Izmit earthquake. In the meantime, a number of focal mechanism catalogs were produced, covering different time periods. In this study, we perform a systematic MT inversion of earthquakes within Turkey between 2008 and 2015, using the dense seismic networks of KOERI and AFAD. The use of combined networks and sitespecific velocity models for the computation of MT inversion results in high-quality solutions of focal mechanisms. This homogeneous focal mechanism catalog provides important new information on the seismotectonics in this region.

Keywords: Earthquake, Seismicity, Moment Tensor Inversion

Current frontiers in spatio-temporal b-value analysis

*Thessa Tormann¹, Laura Gulia¹, Nadine Staudenmaier¹, Antonio Petruccelli², Bogdan Enescu³, Stefan Wiemer¹

1. Swiss Seismological Service, ETH Zurich, Switzerland, 2. Dipartimento di Fisica e Astronomia, University of Bologna, Italy, 3. Department of Geophysics, Kyoto University, Japan

The frequency-size-distribution of earthquakes, characterized by the b-value in the Gutenberg-Richter law, has been documented for its variation in space and time. In many examples it could successfully be related to physical parameters such as stress concentration in asperities or high pore pressures in geothermal regimes. A generically observed depth gradient supports the laboratory-based hypothesis of b-values being inversely dependent on differential stress, which is equally reflected in significant variation between observed b-values for different faulting styles. Temporal variation is more difficult to detect robustly since it is easily biased by spatial activation heterogeneity. However, retrospectively detected b-value decreases before large events have been documented on scales ranging from few days to decades, while post-mainshock significant increases of b-values especially in the highest slip patches have been observed.

Here, we present an overview of some of the latest advances in studying patterns in the size distribution. In these examples from different regions of the world, including the subduction zones around Japan, we bridge various scales: from the smallest detected events to the giant megathrust earthquakes, from large-scale tectonic imprints to local heterogeneity along active faults, from temporally stable to time-varying patterns, from individual sequences to generic aftershock characteristics, from linear frequency magnitude distributions to those not following Gutenberg-Richter scaling, from low-b-focus to implications of observing very high b-values, from interpreting patterns in terms of physical processes to estimating future rupture potential.

Reliable b-value analysis is critically dependent on monitoring capabilities and homogeneous reporting of events. We demonstrate that improvements in this field are worthwhile: spatio-temporal b-value analysis has the potential to improve real time seismic hazard assessment and additionally provides many insights to advance the qualitative understanding of physical conditions and mechanisms.

Keywords: Gutenberg-Richter, b-value, spatio-temporal variation

Along-fault velocity structure and its temporal changes on a laboratory granite fault undergoing stick-slip cycles.

*Hiroki Sone^{1,2}, Zirou Jin¹, Lauren Abrahams¹, Georg Dresen²

1. University of Wisconsin-Madison, 2. GFZ Potsdam

We conducted laboratory stick-slip experiments using a rough fault created in a granite sample, while passively monitoring acoustic emission (AE) events and actively monitoring the 2-D velocity structure along the fault plane. It has been observed in nature and lab that the b-value of earthquake frequency-magnitude relations have a negative correlation with stress magnitudes both spatially and temporally (Scholz, 1968; Schorlemmer and Wiemer, 2005), which may be useful for forecasting earthquake hazards from statistics of recorded earthquakes. However, the relation between the two parameters is empirical and is not supported by understanding of the underlying physics. While stress is not an easily observable parameter, velocity which may depend on stress can be observed through geophysical methods. We compare the spatial distribution of AE frequency-magnitude characteristics and the spatial distribution of ultrasonic wave velocity along the fault to seek for explanations to this empirical correlation. AE events and the velocity structure is monitored by 12 AE sensors wrapped around a rough fault created by breaking an intact granite cylinder (4 cm diameter) at 75 MPa confining pressure. The confining pressure is then raised to 150 MPa to promote stick-slip behavior during loading by a constant displacement rate, similar to Goebel et al. (2012). Periodic monitoring of the ultrasonic-wave travel time between the 66 AE sensor pairs indicate that travel times along each ray paths fluctuate systematically as the axial load cycles during multiple stick-slip events. We perform linear and non-linear inversion analyses using the observed travel times to reveal the change in velocity distribution along the fault plane. Preliminary results show that certain regions of the fault may be experiencing more velocity fluctuation than other regions of the fault. We will compare these fluctuations with the spatial distribution of AE events and its frequency magnitude characteristics to reveal any potential correlation that may help to explain the relation between b-values and stress.

Keywords: Acoustic Emission, P-wave tomography, Earthquake Parameters

Remote triggering of earthquakes as a possible stress-meter: the case of the 2016 M7.3 Kumamoto mainshock

*Bogdan Enescu¹, Kengo Shimojo², Anca Opris², Yuji Yagi³

1. Department of Geophysics, Kyoto University, 2. Graduate School of Life and Environmental Sciences, University of Tsukuba, 3. Faculty of Life and Environmental Sciences, University of Tsukuba

Introduction

Activation of seismicity at remote locations due to the passage of seismic waves from large earthquakes is a well-documented phenomenon (e.g., Hill et al. 1993). However, such distant earthquake triggering is scarce in Japan (e.g., Harrington and Brodsky, 2006) with the notable exception of the remote seismicity activated after the 2011 M9.0 Tohoku-oki earthquake (e.g., Miyazawa et al., 2011). Here we report on a relatively widespread remote triggering of small earthquakes following the 2016 M7.3 Kumamoto (Kyushu) earthquake (an inland, strike-slip event). We hypothesize that the observed, unusual remote triggering might relate with the crustal weakening at volcanoes after the 2011 Tohoku-oki earthquake. In addition, it may also relate with the tectonic stress levels of inland crustal faults.

Data and Method

We have processed waveform data recorded at high-sensitivity Hi-net and broadband F-net stations, operated by NIED, as well as JMA and V-net (NIED) stations located throughout Japan. The waveforms have been scrutinized in both high and low frequency ranges to detect remote events that occurred during the passage of surface waves from the Kumamoto earthquake. Dynamic stresses have been estimated using the approach documented by Peng et al. (2009).

Results and Discussion

The activated seismicity correlates well with the passage at the surface waves from the Kumamoto earthquake. The furthest triggered event was observed in Hokkaido, at ~1630 km epicentral distance, close to Akan volcano, one of the most active in Hokkaido. Another example of remote triggering is that at the Akita-Komagatake active volcano (epicentral distance of ~1191 km), in northern Honshu. Triggering has been also observed at other volcanoes in Tohoku, Chubu, close to Izu Peninsula, and in the southern part of Kyushu (at the Suwanose-jima volcano –the only remote triggering that occurred south of Kumamoto earthquake epicenter). While remote earthquake triggering at volcanoes is predominant, other regions of triggering include Wakayama, Tottori and Noto Peninsula, which correspond to active fault areas.

Since all the analyzed triggering cases take place at epicentral distances more than ~8 times the Kumamoto fault length (30–40 km, Yagi et al., 2016), we infer that the static stress changes are too small to trigger seismicity at such distances. However, the dynamic stresses are significant, ranging from several kPa to tens of kPa. The threshold dynamic stresses that can trigger seismicity are of a few kPa (e.g., Aiken and Peng, 2014). Since most of the remotely triggered earthquakes have been observed at volcanoes, we suggest that the excitation of crustal fluids may have been the main triggering mechanism. The strong shaking, up to relatively large distances, due to a strong directivity effect, may explain the observed spatial distribution of the triggered earthquakes as well as their long-range extent.

It is critically important to understand why such widespread remote activation has not been observed before for Japan, at similar dynamic-stress levels. We have found out that the regions activated this time, in particular the volcanic areas in Tohoku, have been also activated (from days to weeks) after the 2011 Tohoku-oki earthquake. We hypothesize that mechanical weakening of a pressurized crust in these

regions due to the 2011 megathrust might be responsible for an increased trigger-ability. In addition, the activation of some active crustal faults might be related to the levels of tectonic stress along these fault lines. All these observations suggest that remote triggering might be used as a stress-meter at volcanoes and active faults.

Reference paper:

Enescu, B., Shimojo, K., Opris, A., and Y. Yagi, Remote triggering of seismicity at Japanese volcanoes following the 2016 M7.3 Kumamoto earthquake, *Earth, Planets and Space*, 68:165, doi:10.1186/s40623-016-0539-5, 2016.

Keywords: dynamic triggering, stress-meter, volcanoes, active faults, 2016 M7.3 Kumamoto earthquake

熊本地震における前震・本震間の静的トリガリングについての検証

Static stress triggering investigation for the 2016 Kumamoto sequence

*三宅 雄紀¹

*Yuki Miyake¹

1. 京都大学防災研究所

1. Kyoto University, Disaster Prevention Research Institute

本研究では、2016年4月に起きた熊本地震における、大きな2つの前震と本震の間に働く静的応力変化を計算し、トリガリングがあったかどうかの検証を行った。また、地震活動と整合的な断層モデルについての議論をした。

導入

熊本地震では、大きな前震が2つあった。一つはM6.5（前震1）で、その2.5時間後にM6.4の地震（前震2）である。25.5時間後に起きた本震はM7.3のより巨大なものであった。

これらの地震が、互いの地震に与えた影響を静的応力変化という観点から調べるため、前震が本震に与える ΔCFF を計算しようと試みた。 ΔCFF とは、他の場所での地震後に応力がどれだけ断層を滑りやすくしたかを定量的に計算するための尺度である。

ただし、前震、本震震源間の距離は、それぞれが10kmに満たないような狭い領域であり、大きな滑り分布依存性があり、滑り分布が少し違えば ΔCFF が大きく異なる可能性がある。したがって、この依存性を調べ、解析結果の信頼性について評価した。

断層モデルの比較

断層モデルを不確かさが結果に大きな影響を与えることが予想されるため、正確な断層モデルを選ぶ必要がある。よく使用される断層モデルとして、InSARのデータをもとに推定されたモデルや、メカニズム解、CMT解がある。メカニズム解やCMT解は、断層の大きさについての情報を持っていないものの、マグニチュードからおおよその大きさを推定出来るので、これを本研究では断層モデルと呼ぶことにする。

これらの断層モデルを余震分布と比較するために、3Dで表示するためのツールを作った。このツールでは、MFTで決められた地震カタログ（Kato et al. 2016）や気象庁一元化カタログのような震源カタログをプロットできる。また、断層モデルや、滑り分布もプロットできるので、様々な情報を統合でき、熊本地方の地下構造が直観的に理解できるようになっている。

前震から本震にかけての余震分布は複雑であり、一枚の面ではなく幅を持った面状の分布であることが分かった。この面状の分布と余震分布を比較することにした。

その結果、InSARによる断層モデルは余震分布と整合的でなく、メカニズム解やCMT解が整合的であることが分かった。

したがって、使用する断層モデルとして、メカニズム解、CMT解を基準とする断層モデルとして採用し、このパラメータを変化させることにした。

課題の整理

これらのツールを見ると、前震2が本震までの余震分布と関係性が深いように思われたので、仮説として、「前震1が本震をトリガーしたのではなく、前震2が本震をトリガーした」というものを考えた。

課題を整理すると、（1）滑り分布にどれくらい ΔCFF は依存するか （2）前震1と前震2のどちらが本震をトリガーしたのか の2つの問いになる。

計算方法（1）

ΔCFF を計算するためには、2つの断層（滑る断層、応力変化を受ける断層）が必要である。滑る断層につ

いては、滑り分布として円形のアスペリティを仮定し、この半径や傾斜、走向を変えることにした。また、応力変化を受ける断層モデルとして、初動の滑りを見るために、メカニズム解を使用した（パラメータは固定）。

結果（１）

その結果は、前震１から前震２への ΔCFF を見ると、傾斜、半径の依存性は小さく、走向の依存性が大きいことがわかった。これは断層間の力学的関係を考える際、走向の決定精度が重要になることを表している。

計算方法（２）

前震の２つの断層の円形アスペリティの半径を変化させ、それぞれについて本震震源での ΔCFF を計算することで、滑り分布の依存性を考慮に入れつつ、どちらがより本震をトリガリングしていると言えるかについて評価した。本震の断層面上で前震と本震の間にあった余震分布と ΔCFF がどの程度相関があるかを調べた。

結果（２）

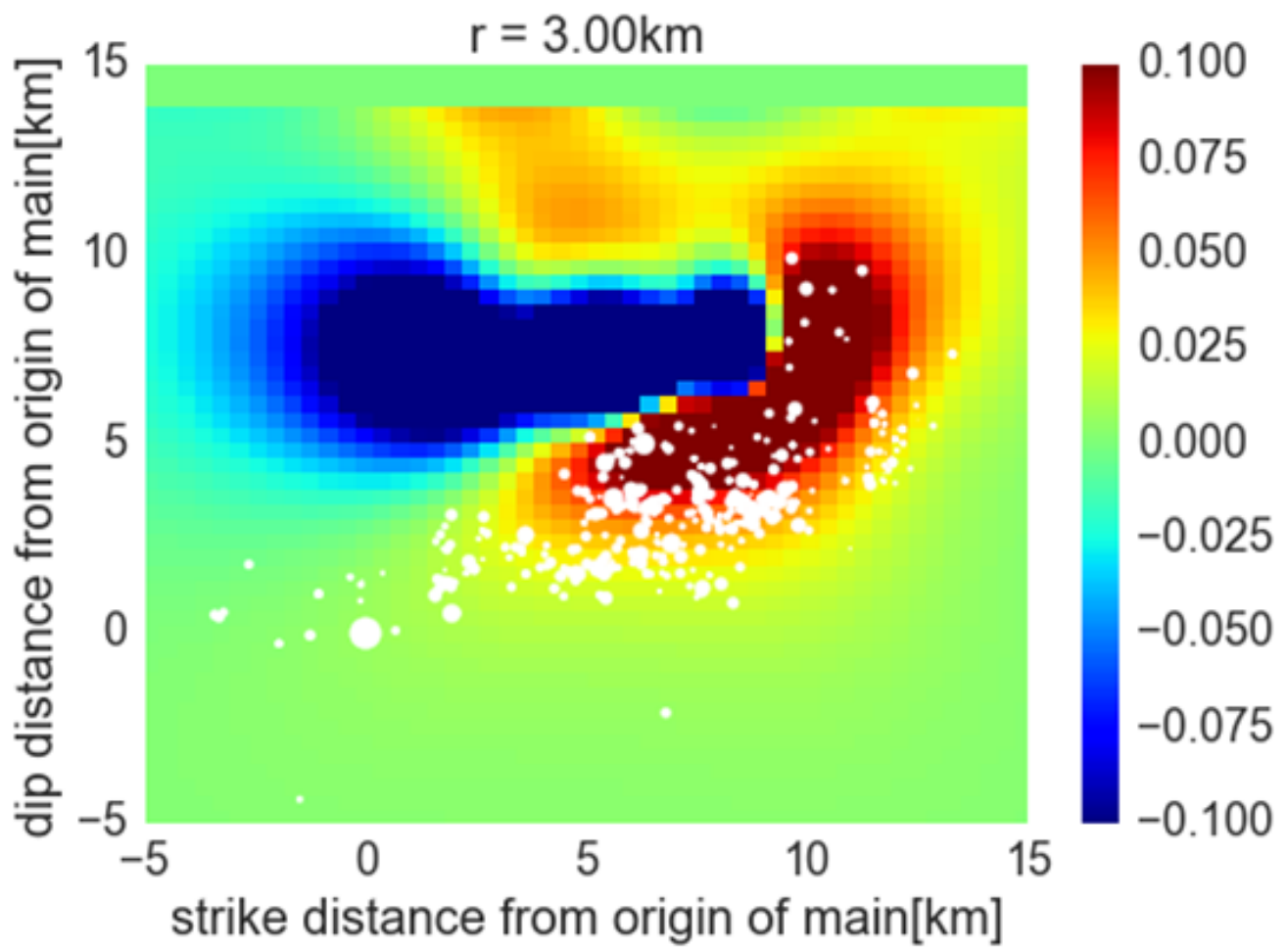
前震１の方が前震２に比べて半径による依存性が大きく、値の絶対値も大きくなる傾向があった。前震の滑り分布についての先行研究（Asano et al. 2016）を見ると、アスペリティは3km~4kmである可能性が高く、その場合、前震１は前震２に比べ、数倍大きい ΔCFF になることから、前震２ではなく、前震１が本震をトリガーした可能性が高いという結論に至った。前震２による本震断層面での ΔCFF は、余震分布をよく説明する。このことは、狭い領域での ΔCFF を計算することが意味を持つことを示唆する。余震分布と ΔCFF のずれは、不均質性と滑り分布の精度が十分でないことが原因と考えられる。

結論

- ・熊本地震において、前震２ではなく前震１が本震をトリガーした可能性が高い。
- ・ ΔCFF を計算する際には走向を正確に決めることが重要である。
- ・断層モデルパラメータとして、メカニズム解やCMT解を使うことが推奨される。

キーワード：地震活動、熊本地震、断層モデル

Keywords: seismicity, Kumamoto earthquake, fault model



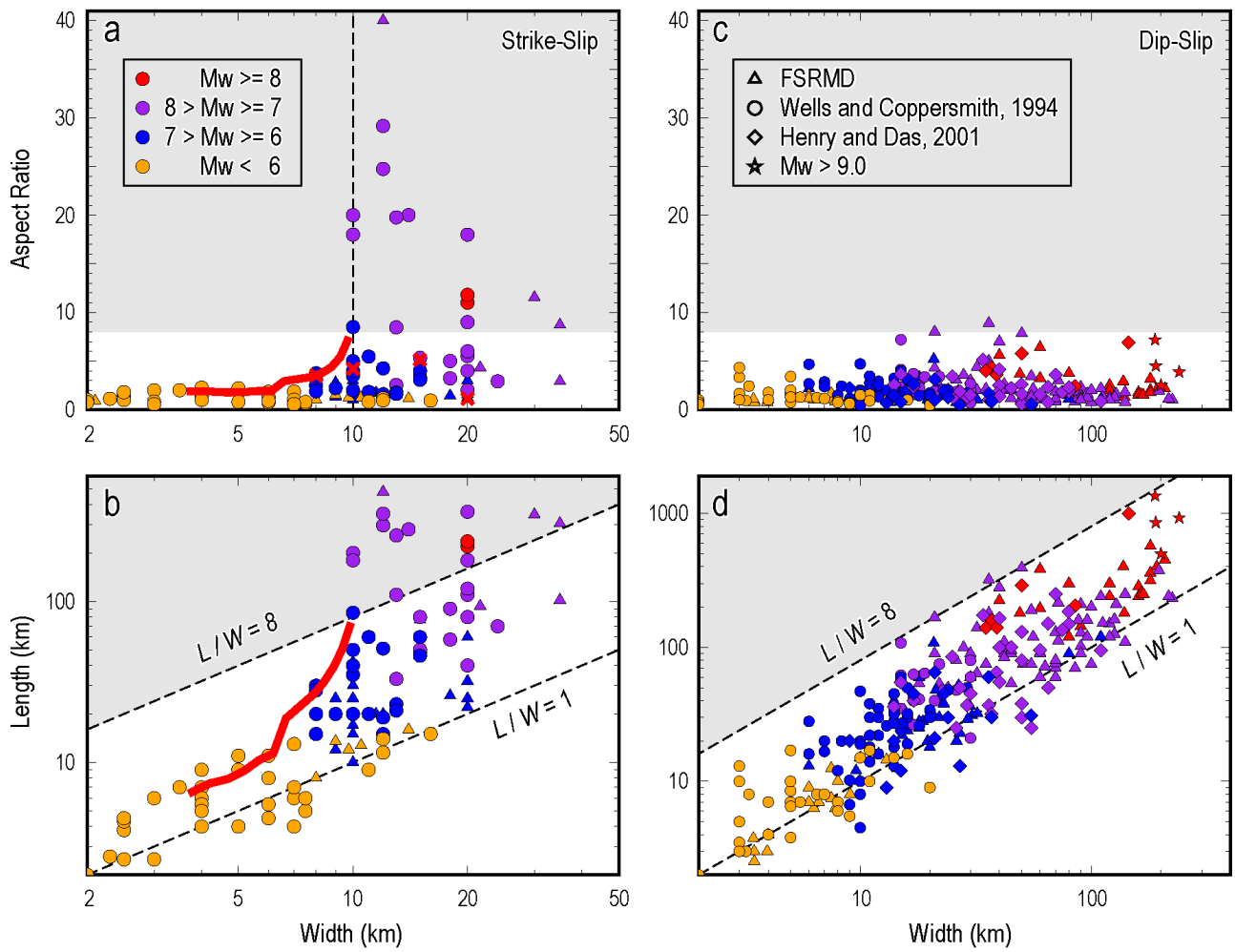
Seismogenic width controls nucleation and aspect ratio of earthquake ruptures

*Hongfeng Yang¹, Huihui Weng¹

1. Chinese University of Hong Kong

Whether the magnitude of earthquakes depends on the nucleation process is a key question in earthquake physics. Several observations of strike-slip and dip-slip earthquakes suggest that the eventual earthquake moment may increase with the size of the nucleation zone. However, it has also been proposed that the earthquake sizes may be not nucleation-related. We investigate the effect of seismogenic width on nucleation and aspect ratio of earthquake ruptures using numerical simulations of strike-slip faulting with a finite seismogenic depth (width). The seismogenic width has a significant effect on rupture propagation by controlling the energy balance near rupture tips. If the seismogenic width is smaller than a critical value, ruptures cannot propagate along the seismogenic fault continually, regardless of the size of the nucleation zone. The seismic moments of these self-arresting ruptures increase with the nucleation size, forming nucleation-related events. The aspect ratios increase with the seismogenic width but are generally smaller than 8, consistent with observations. In contrast, ruptures are breakaway ruptures and tend to have high aspect ratios (>8) if the seismogenic width is sufficiently large. But the critical nucleation size for breakaway rupture is larger than the theoretical estimate for an unbounded fault. The eventual seismic moments of breakaway ruptures do not depend on the nucleation size. Our results suggest that estimating final earthquake magnitude from the nucleation phase may only be plausible on faults with small seismogenic widths.

Keywords: seismogenic width, rupture nucleation, rupture aspect ratio



A Multiple Point Sources Study on the 2016 Kumamoto Mw 6.2 Earthquake

*Shengji Wei^{1,2}, Qibin Shi^{1,2}, Meng Chen^{1,2}

1. Earth Observatory of Singapore, Nanyang Technological University, 2. Asian School of the Environment, Nanyang Technological University

The Kumamoto M_w 6.2 earthquake on April 14, 2016, which has been the first event in the 2016 Kumamoto earthquake sequence, occurring about one day before the M_w 7.1 mainshock, shows significant complexity of its source. To understand the rupture history of the M_w 6.2 earthquake, we employ a multiple-point-source inversion under the Markov Chain Monte Carlo (MCMC) scheme, where the earthquake rupture is decomposed into a set of point sources and each point source has respective focal mechanism, location, moment magnitude, rupture time and source duration. We use an M_w 5.4 aftershock, which can be considered as point source, to calibrate the paths to all the strong motion stations within 100km. The calibration helps us to understand the sensitivity of the local velocity structure to the frequency we are using in the multiple point source inversion. The optimal model consists of three point sources with comparable moment magnitudes, indicating the moment of this earthquake was released three times from various part of the fault rupture. These three point sources are distributed around the intersection area of the Futagawa Fault and the Hinagu Fault, and the focal mechanisms are consistent with the fault geometry that is inferred from the relocated aftershocks, which dips to the southeast in the middle part and dips the northwest on the two side of the intersection area. The full moment tensor obtained by adding the contribution from each point source indicates a strong CLVD component, which is in agreement with the point source full moment tensor inversion result using the F-net and strong motion stations.

Keywords: Kumamoto Earthquake, Multiple point source, MCMC inversion