

Inversion of Gravity Anomalies Using Primal-Dual Interior Point Methods

*Azucena Zamora¹, Aaron A Velasco¹

1. University of Texas at El Paso

Structural inversion of gravity datasets based on the use of density anomalies to derive robust images of the subsurface (delineating lithology and their boundaries) constitutes a fundamental non-invasive tool for geological exploration. The use of gravity data to estimate and interpret the substructure based on its density properties have proven efficient; however, the inherent non-uniqueness associated with most non-seismic geophysical datasets make this the ideal scenario for the use of recently developed robust constrained optimization techniques. We present a constrained optimization approach for a least squares inversion problem to characterize 2-Dimensional Earth density structure models based on gravity anomalies. The formulation inverts Bouguer gravity anomalies using polygons along with Primal-Dual Interior-Point methods for the optimization of the results, which include equality and inequality physical and structural constraints. We validate our results using synthetic density crustal structure models with varying complexity and illustrate the behavior of the algorithm using different initial density structure models and increasing noise levels in the observations. Moreover, we apply the approach to the Southern Rio Grande Rift (SRGR) region using previously obtained receiver function results as constraints for the inverted density profiles. We produce constrained crustal models that characterize the SRGR showing a shallower Moho (30 km) in the region, which is thicker than previously suggested. Based on its validation and implementation, we conclude that the algorithm using Primal-Dual Interior-Point methods is robust and always honors the geophysical constraints. Advantages of using this approach for structural inversion of gravity data are the incorporation of a priori information related to the model parameters (coming from actual physical properties of the subsurface) and the reduction of the solution space contingent on these boundary conditions.

Keywords: Earth, Inversion, Gravity anomalies, Primal Dual Interior Point methods

Depth estimation of the magnetic basal sources associated with the Curie Isotherm, from aeromagnetic data in Baja California Sur (Mexico) using spectral and geostatistical analysis.

*Xochitl Flores^{1,2,3}, Osvaldo Sanchez^{1,2}, Rosa Maria Prol^{1,2,3}, Jose Luis Salas^{1,2,3}

1. National Autonomous University of Mexico, 2. Institute of Geophysics, 3. Department of Natural Resources

Nowadays techniques and technologies used in geophysical exploration focused on finding additional natural resources besides those of fossil origin, has new improvements based on theories applied so far only in researching field, such as spectral, and geostatistical analysis in order to estimate the origin of basal magnetic sources known as the depth of Curie's isotherm; very important issue on geothermal deposits.

Fourier analysis applied to potential fields allows the depth estimation of interfaces into the Earth's crust with high contrasts of magnetic susceptibility or density. This method, applied to the magnetic field, uses the relationship among the magnetic anomalies' power spectrum, depth and size of such sources. (Spector and Grant, 1970; Bhattacharyya and Leu, 1975; Blakely, 1995 and Ruiz and Introcaso, 2004). From spectral and geostatistical analysis proposed by Okubo and Bhattacharyya (1985; 1970) it is possible to estimate the depth of basal magnetic source associated with of Curie's isotherm depth whose temperature ranges between of 580 and 600 °C. (Blakely, 1988, 1995; Tanaka et Al., 1999 and Frost and Shive, 1986).

This study is based on the aeromagnetic data acquired by the Mexican Geological Survey and processed to estimate the depths of the magnetic sources in the Tres Virgenes area, Baja California Sur, Mexico. The area of interest was divided in seven windows with squares of 64 Kilometers; knowing that the maximum depth that can be estimated depends on the length of the 2π window. Main magnetic field was included in each window.

In order to estimate depths, the Spector and Grant (1970) methodology was applied; such process assumes that a set of vertical prisms are the sources of the anomalies on the aeromagnetic charts. These prisms define a distribution of magnetic sources, computing its radial power spectra, obtaining its square root, and its natural logarithm it is possible to associate its second slope of the resulting function with the magnetic structure's top depth defined as Z_t .

On the other hand, the geostatistical analysis was done following the methodology published by Bhattacharyya, Leu (1975, 1977) and Okubo (1985) where the radial power spectrum rise to the square root and divided by the absolute value of the wave number. After that the natural logarithm was obtained in order to find the centroid depth (Z_0) of the magnetic structure. The basal depth of the magnetic structures defined as Z_b was calculated by the ratio ($2Z_0 - Z_t$).

The average depth in the area of interest in Tres Virgenes; ranges between 5 to 6 kilometers. It is possible to correlate such results with heat flow values and estimate the current potential of the Tres Virgenes geothermal field and its surroundings.

Keywords: Curie's isotherm, Tres Virgenes, radial power spectrum

Influence of near-surface strongly anisotropic medium on P-to-S wave conversion

*米木 梨奈¹、三ヶ田 均¹、武川 順一¹

*Rina Yoneki¹, Hitoshi Mikada¹, Junichi Takekawa¹

1. 京都大学工学研究科

1. Graduate School of Engineering, Kyoto University

In the fields of earthquake disaster prevention and energy resource exploration, understanding the properties of seismic anisotropy is important for obtaining various information about subsurface, for example, its structure, regional stress field and selective orientation of crack opening direction. In some cases, like near surface and reservoir rocks, formations are estimated to be strongly anisotropic for elastic wave propagation. To extract anisotropic information from seismic exploration data, many researches have conducted elastic anisotropy studies. However, most of these studies are based on the assumption of weakly anisotropic media (Thomsen, 1986). Our previous studies showed that strong anisotropic media in the subsurface significantly influence the seismic waveforms especially on the PS converted waves. In the present study, we apply the reverse time migration (RTM) to the PS converted waves to determine the depth of anisotropic layer. To extract PS converted waves from observed data, we also develop a novel wave separation method. We demonstrate the effectiveness of our method using a numerical experiment. Our numerical result shows that our method can image layer boundary between isotropic and anisotropic layers which generates strong PS converted waves.

キーワード：地震波速度異方性、PS変換波

Keywords: Seismic anisotropy, PS converted waves

A study in tectonic structure in Taiwan in the susceptibility domain

*Chieh-Hung Chen¹, Strong Wen², Yi-Hsuan Huang², Cheng-Horng Lin³, Chun-Rong Chen⁴

1. Hubei Subsurface Multi-scale Imaging Key Laboratory, Institute of Geophysics and Geomatics, China University of Geosciences, Wuhan, Hubei, 430074, China, 2. Department of Earth and Environmental Sciences, National Chung Cheng University, Chiayi 621, Taiwan, 3. Institute of Earth Sciences, Academia Sinica, Taipei, Taiwan, 4. Department of Earth Sciences, National Central University, Jhongli, 320, Taiwan

3-D velocity-susceptibility models were constructed by using the velocity retrieved from seismic tomography transferring into susceptibility through characteristics of minerals and/or rocks determined by V_p and the V_p/V_s ratio in Taiwan. Simulated magnetic anomalies computed from those models via forward methods were compared with the magnetic anomaly map retrieved from field prospection to determine a double constrained model. Profiles sliced from the determined model were utilized to examine well-known tectonic structure reported in the previous studies to confirm the feasibility of the velocity-susceptibility transformation. The determined model shows earthquakes often located in the low-susceptibility in the western side of Taiwan. In contrast, no clear relationship between earthquake locations and susceptibility can be found in volcanic areas. Aseismic areas in the southern part of the Central Mountain Range are dominated by intrusion of igneous with high susceptibility. The Philippine Sea plate subducting beneath the Eurasian plate at the latitude of about 24.5° in the eastern side of Taiwan also can be revealed by a downward high-susceptibility zone. In short, the 3-D velocity-susceptibility model provides a novel view of the dominant susceptibility and heat on tectonic structure and geological evolution.

Keywords: Magnetic anomaly, Velocity tomography, Magnetic susceptibility

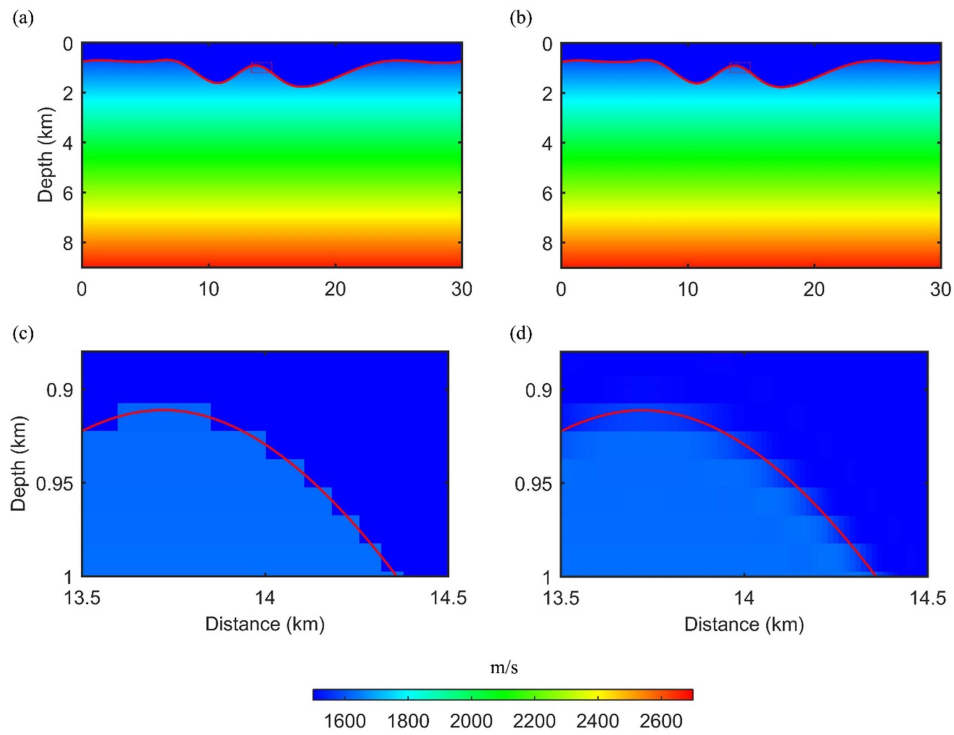
Accurate seabed modelling using finite difference methods

*di wu¹, GANG YAO²

1. China University of Petroleum, 2. Imperial College London

Finite difference is the most widely used method for seismic wavefield modelling. However, most finite-difference implementations discretise the Earth model over a fixed grid interval. This can lead to irregular model geometries being represented by ‘staircase’ discretisations, and potentially causes mispositioning of interfaces within the media. This misrepresentation is a major disadvantage to finite difference methods, especially if there exist strong and sharp contrasts in the physical properties along an interface. The discretisation of undulated seabed bathymetry is a common example of such misrepresentation of the physical properties in finite-difference grids, as the seabed is often a particularly sharp interface owing to the rapid and considerable change in material properties between fluid seawater and solid rock. There are two issues typically involved with seabed modelling using finite difference methods: firstly, the travel times of reflections from the sea bottom are inaccurate as a consequence of its spatial mispositioning; secondly, artificial diffractions are generated by the staircase representation of dipping seabed bathymetry. In this paper, we propose a new method that provides a solution to these two issues by positioning sharp interfaces at fractional grid locations. To achieve this, the velocity model is first sampled in a model grid that allows the centre of the seabed to be positioned at grid points, before being interpolated vertically onto a regular modelling grid using the windowed sinc function. This procedure allows for undulated seabed bathymetry to be represented with improved accuracy during modelling. Numerical tests demonstrate that this method generates reflections with accurate travel times and effectively suppresses artificial diffractions.

Keywords: finite difference, seabed bathymetry, integer grid, fractional grid, staircase, sinc interpolation



An acoustic velocity model containing an undulating seabed, sampled using the (a) Integral Grid Model and (b) Fractional Grid Model methods. (c) and (d) are enlarged views of the areas outlined by the red dotted squares in (a) and (b), respectively. The red curve in each panel indicates the true position of the seabed.

An accurate and efficient finite-difference operator for the frequency-domain wave propagation

*武川 順一¹、三ヶ田 均¹

*Junichi Takekawa¹, Hitoshi Mikada¹

1. 京都大学大学院工学研究科

1. Graduate School of Science, Kyoto University

We newly developed a finite-difference (FD) operator for the frequency-domain acoustic wave propagation. This operator uses a stretched stencil to avoid the numerical anisotropy. In general, direct solvers for sparse matrices are used in exploration geophysical community because they have some advantages over iterative ones, i.e. frequency dependent attenuation and multi-source configuration can be simply implemented. In the frequency-domain modeling, the computational costs (calculation time and computational memory) depend on not only the number of neighbors but also the bandwidth of the impedance matrix. So usage of higher-order schemes is not always conducive to the improvement of the computational costs.

In the present study, we use a stretched stencil of FD operator not to increase the bandwidth in the impedance matrix. Coefficients of the stencil are determined by a minimization process. We investigate the accuracy of our scheme using dispersion analysis and numerical experiment. They show that the proposed scheme can improve not only accuracy but also efficiency compared to the conventional 9-point scheme proposed by Jo et al. (1996).

キーワード：差分法、周波数領域

Keywords: finite-difference method, frequency-domain

Full Waveform Inversion with Nonlocal Similarity and Adaptive Sparsity-Promoting Regularization in the Gradient Domain

*Dongzhuo Li¹, Jerry Harris¹

1. Stanford University

Seismic inversion is a highly nonlinear and ill-posed problem. In a typical seismic survey, aperture size, source frequency bandwidth, and source and receiver distribution are limited. Therefore, the inversion results usually suffer from strong artifacts and reduced resolution.

In this study, we propose a novel full waveform inversion (FWI) method with a nonlocal similarity prior and adaptive sparsity-promoting regularization in the gradient domain. First, we invoke a self-similarity between patches extracted from a single velocity model. In other words, these patches have a certain level of redundancy. To exploit this property, we adopt a regularization term that finds and stacks together the k most similar patches into a 3D cube for each patch from the velocity model, and then require that the cube be sparse under a 3D orthogonal sparsifying transform. A second regularization term is a generalization of total variation with learning-based dictionaries, which provide a good estimation of the gradient field. Since the gradients emphasize high-frequency components of the velocity model, a better reconstruction of the gradients means a more accurate reconstruction of high spatial frequencies, hence higher resolution.

The proposed optimization problem can be solved by the Alternating Direction Multiplier Method (ADMM), in which the original problem can be transformed into several sub-problems and then be solved by looping through those sub-problems till convergence or for a certain number of iterations. The first sub-problem is similar to the traditional FWI with a quadratic regularization term, which is easily solved by the L-BFGS method with the gradient computed using the adjoint method. The other sub-problems can be solved by hard-thresholding and dictionary learning methods such as K-SVD. We test the proposed method on the BP 2004 velocity model. Compared with traditional FWI, our new technique can better reconstruct sharp edges like salt body boundaries, and is also able to effectively reduce artifacts and noise. Quantitatively, the result from the proposed method has higher structural similarity index (SSIM) and also lower mean square error.

Wave-equation based techniques to explore crustal structure along the axis of the East Pacific Rise 9°N

Milena Marjanovic¹, *Nobuaki Fuji¹, Satish Chandra Singh¹, Thomas Belahi¹

1. IGP

With the recent improvements and accessibility to enhanced computational power, we are now able to apply more sophisticated methods to deep-water, active seismic datasets and explore the Earth's oceanic crust in greater detail. Here, we use a suit of wave-equation based techniques to look at the structure of the upper oceanic crust formed along the East Pacific Rise (EPR) between 9°16' and 9°56' N. The 2-D multi-channel, collected in 2008 along the EPR, we first extrapolate to a constant level just above the seafloor to suppress seafloor diffractions and to facilitate further inversion processes. We then apply wave-equation tomography, using first refraction arrival, to extract information on long- to mid-wavelength structures within the first 500 m of the upper crust. The resulting velocity model shows presence of localized low velocity anomalies, 5-10 % lower than the background velocity. The most prominent one is observed within the hydrothermally and magmatically dynamic region located north of 9°46' N, represented by well defined pipe-like zones of low velocity we interpret as presence of hydrothermal pathways. Their spatial distribution and association with previously mapped geological features help us to discriminate between the up- and down-going pathway. The two anomalies present beneath the two vent clusters are interpreted as the up-going fluid pathways. We suggest the remaining anomalies collocated with the morpho-tectonic deviations of the ridge axis as the ideal loci for seawater to penetrate the crust and potentially establish the down-going stream. The velocity model obtained from wave-equation tomography is further used as a starting model for waveform inversion. As the wave-equation tomography provides good match in travel-time and phase of the refraction event within the given data window, we can perform waveform inversion even though the low frequency and offset of the data is limited (useful signal > 4 Hz and offset range is smaller than 6 km) that could lead to cycle skipping. The resulting velocity introduced additional details in velocity models, which are spatially matched with individual fine-scale tectonic discontinuities and or vent orifices, and reflect processes related to local fracturing and cracking.

Keywords: wave-form inversion, mid-ocean ridge, hydrothermal circulation

Waveform-based Gradient method for estimating hypocenter mechanism before observing aftershocks

*Louise Anne Cordrie¹, Hitoshi Mikada², Junichi Takekawa²

1. Ecole et Observatoire des Sciences de la Terre (Strasbourg), 2. Kyoto University

There are a lot of examples in numerical estimation of physical mechanisms of earthquakes. Due to the limitation in the number of available seismographs in the world in the past, the estimation either using CMT solutions or Monte-Carlo type inversion schemes has been dominant in the literature. The former assumes a hypocenter of an earthquake to be a point source, although the fault plain to the earthquake should have some finite physical dimensions, and estimates the mechanism of the earthquakes (strike-slip, normal or reverse). The latter assumes the hypocenter as a group of fault planes to cover the finite-scale earthquake fault and gives the idea which part of the fault plane has worked as asperities, etc. The methods have been used to quickly estimate what kind of earthquake has taken place in a short period after the occurrence of each earthquake but they have limitations. Indeed, the former models earthquakes only using the initial quarter to half the wavelength and ignores any tailing waveforms and the latter assumes the location of a fault plane that caused the earthquake using the distribution of aftershocks. Those have been remaining shortcomings, since we need to watch the distribution of aftershocks carefully to identify the fault location. Since the number of seismometers have been increasing, we may be able to improve the situation to utilize some leading-edge technologies such as wave theories. After the development of a 2D slip fault model, we try to estimate the location of hypocenter only with earthquake waveforms observed by an increased number of seismometers.

Keywords: Earthquake, Inversion

Application of Reverse Time Migration to Electromagnetic Data in the Fictitious Wave Domain

*Sajjad Amani¹, Hitoshi Mikada¹, Junichi Takekawa¹

1. Kyoto University

Recently, deep reservoirs under gas clouds become possible targets in the oil industry. Since one of the main obstacles to develop them is strong attenuation of wave energy inside the gas clouds, it is important to extract signals come from target reservoir. In recent years, analytical transformation of the diffusive Maxwell' s equation to the wave domain one could be a powerful tool to obtain seismic-like data in CSEM. Proposed advantages like higher sensitivity to the changes and lower CPU time, could make the solutions of Maxwell' s equations in the fictitious domain more powerful for discovering the earth structures compared to the diffusive domain ones. So, it would be possible to monitor the deeper structures using the data set in the fictitious wave domain even under strong attenuating media assumption. In this study, we apply the Reverse Time Migration (RTM) imaging algorithm in the fictitious domain to investigate a deep reservoir in a conductive (attenuating) media. RTM exhibits a great ability in handling of the steeply dipping structures and complicated velocity models. We demonstrate the effectiveness of our approach using numerical experiments. Synthetic data set of CSEM is prepared by the finite-difference method. We use three types of received components for RTM; i) E_x (electric field in x-direction), ii) E_y (electric field in y-direction), iii) H_z (magnetic field in z-direction). The vertical and horizontal electric field of marine CSEM method are important because they respond to the edges of structure. The horizontal magnetic field response presents an additional and useful measurement for the marine CSEM method (Li and Constable, 2007). Each component has a distinctive characteristic. So, the effect of each component on the migration image is investigated and compared with each other.

Keywords: Maxwell' s Equations, Reverse Time Migration, Diffusive Domain, Fictitious Wave Domain

Monitoring seismic velocity changes caused by offshore earthquakes using DONET ambient noise records

*木村 俊則¹、三ヶ田 均²、荒木 英一郎¹、町田 祐弥¹

*Toshinori Kimura¹, Hitoshi Mikada², Eiichiro Araki¹, Yuya Machida¹

1. 国立研究開発法人海洋研究開発機構、2. 京都大学

1. Japan Agency for Marine-Earth Science and Technology, 2. Kyoto University

Subduction zones, where a tectonic plate subducting beneath the other plate, megathrust or interplate earthquakes could be generated repeatedly. Because of the nature of interplate earthquakes, the process of plate subduction governs the distribution, mechanics, and style of slip along the interplate fault. At the Nankai Trough subduction zone, located beneath the Pacific Ocean off the southeast coast of Japan, we have installed a seismic observation system, named DONET (Dense Oceanfloor Network system for Earthquake and Tsunamis), which includes seafloor broadband seismometers and borehole seismometers to monitor the seismic activity and the process of earthquake generation including the stress accumulation.

To elucidate earthquake generation and preparation process, it is necessary to investigate how the stress could be accumulated not only in deeper part but also in the shallow sediments, what the role of interstitial fluid could be in the stress accumulation processes, etc. There are some conventional methods to measure these physical properties, such as borehole strainmeter, borehole breakouts or borehole dynamic tests. However, these methods have some difficulties from the viewpoints of technical and/or cost. Therefore, we need to have some other methods to see the state and time variation of the stress in the subseafloor.

In this study, we applied seismic interferometry technique to ambient noise records observed by DONET seafloor seismometers to obtain time dependent seismic velocity as a proxy of stress state below seafloor. We calculated zero-offset horizontal and vertical pseudo shot records from every 1 hour ambient noise records in two years continuous data since July 2014, which were observed by three components of DONET seismometers. Obtained pseudo shot records are then stacked every 240 hours (10 days). Clear events are visible in both vertical and horizontal components of the pseudo shot records, which could be reflected P- and S-waves from the bottom of the shallow sediment layer, respectively. Then we applied the stretching interpolation method to the obtained pseudo shot records. Results confirmed that time variation of P- and S-wave velocity in the shallow sediment layers are stable with its velocity changes of less than 1 percent without large seismic events.

On 1 April 2016, a large offshore earthquake, the off Mie earthquake ($M_w = 6.0$), occurred. DONET KME18 seismometer is located in the vicinity of the source region with horizontal distance of less than 10 km, and clearly observed co- and post-seismic events including aftershocks and tremors. In pseudo shot records obtained from the KME18 seismometer, large S-wave velocity change of 5 percent maximum, was observed as co- and post-seismic velocity change with duration of approximately 20 days, although velocity change of P-wave was less than 1 percent in the same duration. Results confirmed that change of pore fluid migration and crack distributions, which could be caused by strong motion of the large earthquake, are observable as a proxy of stress distribution and changes below each seismometer by using ambient noise records.

We plan to perform further analysis and discussion including S-wave anisotropy analysis and more quantitative discussion of the relationship between seismic velocity, its anisotropy, pore-fluid pressure and stress for this approach to be used as simple stress monitoring tool to understand the mega-thrust earthquake preparation and generation cycle.

キーワード：南海トラフ、海溝型巨大地震、DONET、速度モニタリング、地震波干渉法

Keywords: Nankai Trough, Mega-thrust earthquake, DONET, Velocity monitoring, Seismic interferometry

全波形逆解析によるS波異方性の検出

Estimation of Shear wave anisotropy of Transversely Isotropic medium by Full Waveform Inversion

*扶瀬 聡史¹、三ヶ田 均¹、武川 順一¹

*Satoshi Fuse¹, Hitoshi Mikada¹, Junichi Takekawa¹

1. 京都大学大学院工学研究科

1. Kyoto University Graduate School of Engineering

In reflection seismic survey, relatively low resolution information can be obtained over a wide range, whereas the borehole logging data contains a high precision data in a narrow range. It is important to estimate the physical properties by integrating these two kinds of information. Recently, anisotropic structure in the subsurface has drawn attention because of its impact on the seismic survey and interpretation. The velocity of seismic wave varies due to natural fractures, sediment structures and selective crystal structures of subsurface materials. Understanding anisotropic properties is important to estimate dynamic properties such as deformation and stress of rock inside the earth and to estimate the composition of minerals.

In this research, a numerical experiment is conducted on the sonic logging model which contains the anisotropic layer. A cross dipole, which consists of two orthogonal dipole sources, is used as a transmitter. For the anisotropic model, a transversely isotropic medium with a horizontal axis of symmetry with five independent elastic elements is set. According to previous studies, it is suggested that the received waveform obtained by the cross dipole measurement changes with the degree of anisotropy of the rock. Distinctive feature can be observed when shear wave passes through the anisotropic layer and splits into two polarized waves: fast shear and slow shear. We attempt to estimate the elastic parameters using the shear waves. Full waveform inversion (FWI) is applied to estimate the elastic parameters directly. FWI is one of the techniques to estimate the ground physical properties with high accuracy and resolution by updating the model parameters so as to minimize the residual between the observed and the calculated waveforms. As a result, it was suggested that highly accurate estimation of elastic parameters is achieved by applying FWI to the layer where anisotropy exists. Although the resolution depends on the receiver interval in conventional slowness time coherence method, it is suggested that FWI can estimate ground physical properties with high resolution.

キーワード：異方性、全波形逆解析、検層

Keywords: Anisotropy, Full Waveform Inversion, Borehole Geophysics